



English

# Crossroads

## R i t s u m e i k a n

### 2020-2021

Ritsumeikan University

Ritsumeikan Asia Pacific University

Ritsumeikan Junior High School

Ritsumeikan Senior High School

Ritsumeikan Uji Junior High School

Ritsumeikan Uji Senior High School

Ritsumeikan Keisho Junior High School

Ritsumeikan Keisho Senior High School

Ritsumeikan Moriyama Junior High School

Ritsumeikan Moriyama Senior High School

Ritsumeikan Primary School

# R The Ritsumeikan Trust Academy Overview

## The Founding Spirit and Educational Ideals of the Ritsumeikan Academy

The Ritsumeikan Academy was founded in 1900 as the Kyoto Hosei School (Kyoto School of Law and Politics), an evening law school open to working people. The school was founded by Kojuro Nakagawa, former secretary to Prince Kinmochi Saionji, liberal statesman of late 19th and early 20th Century Japan. With Saionji's blessing, the name was changed to Ritsumeikan Private University in 1913. The university established itself upon the spirit of "freedom and innovation" and set "peace and democracy" as its core educational philosophy.

The Ritsumeikan Academy has now become an integrated academy with a rich culture of individuality and international awareness accommodating a total of approximately 50,000 students. The current Ritsumeikan Academy has campuses in Hokkaido, Shiga, Kyoto, Osaka, and Oita and encompasses two universities, four high schools, four junior high schools, and one primary school. Since Ritsumeikan's establishment, approximately 370,000 students have graduated from Ritsumeikan University and 19,000 from Ritsumeikan Asia Pacific University (APU). The Ritsumeikan Academy fosters learning and the development of individual talents in order to nurture just and ethical global citizens.



**Tomomi Morishima**  
Chairman of the Board of Trustees  
The Ritsumeikan Trust



**Yoshio Nakatani Ph.D.**  
Chancellor of The Ritsumeikan Trust  
President of Ritsumeikan University



Ritsumeikan  
Suzaku Campus



Ritsumeikan University  
Kinugasa Campus



Ritsumeikan University  
Biwako-Kusatsu Campus



Ritsumeikan University  
Osaka Ibaraki Campus



Ritsumeikan  
Asia Pacific University (APU)

# The Ritsumeikan Charter

The Ritsumeikan Trust has formulated "The Ritsumeikan Charter" as follows in order to share the ideals and mission of Ritsumeikan among all of its members and to disseminate them throughout the world.

The Ritsumeikan Trust  
July 21, 2006

## The Ritsumeikan Charter

Ritsumeikan traces its roots to Prince Saionji's private academy of the same name, established in 1869. It was officially founded in 1900 by his protégé, Kojuro Nakagawa, as the *Kyoto Hosei Gakko* (Kyoto School of Law and Politics), later to take on the name "Ritsumeikan." The name is derived from a passage in the *Jinxin* chapter of the *Discourses of Mencius*, and means "a place to establish one's destiny through cultivating one's mind."

Ritsumeikan's founding ideals are "freedom and innovation" and reflecting upon its wartime experience, it committed itself to a core educational philosophy of "peace and democracy" after World War II.

Ritsumeikan has faced the challenges of the times by pursuing an independent path to rise above adversity and has become the comprehensive private educational institution that it is today through extensive cooperation and support from both within and outside Japan.

Ritsumeikan, as a Japanese institution located in the Asia Pacific region, is committed to sincerely reflecting upon history and to building an institution where many cultures coexist in the spirit of international mutual understanding.

Ritsumeikan will build relationships of trust, through research and education, as well as sports and cultural activities, and establish its roots in the local community, to create an academic institution open to international society.

Ritsumeikan will strive to strengthen links with society and promote its institutional development by fully utilizing the characteristics of a private academic institution, the participation of its faculty, staff and students, and the support of alumni and parents, while respecting the principles of autonomy, democracy, transparency, non-violence and justice.

Ritsumeikan will pursue the creation of universal values based on academic freedom and search for solutions to the pressing issues facing humankind, with its educational endeavors based on its founding spirit and educational ideals, bearing in mind "to believe in the future, to live for the future".

Ritsumeikan will foster learning and the development of individual talents in order to nurture just and ethical global citizens.

Ritsumeikan, as an institute of education and research, pledges to promote peace, democracy and sustainable development in Japan and throughout the world, in keeping with the spirit of this Charter.



Ritsumeikan  
Junior High School  
Ritsumeikan  
Senior High School



Ritsumeikan Uji  
Junior High School  
Ritsumeikan Uji  
Senior High School



Ritsumeikan Keisho  
Junior High School  
Ritsumeikan Keisho  
Senior High School



Ritsumeikan Morioka  
Junior High School  
Ritsumeikan Morioka  
Senior High School



Ritsumeikan  
Primary School

# R The History of Ritsumeikan

## The Founding Spirit and Educational Philosophy of Ritsumeikan

The history of Ritsumeikan dates back to 1869 when Prince Kinmochi Saionji, an eminent international statesman of modern Japan, founded "Ritsumeikan" as a private academy on the site of the Kyoto Imperial Palace. In 1900, Kojuro Nakagawa, former secretary of Prince Saionji, established Kyoto Hosei School (Kyoto School of Law and Politics), an evening law school that was open to working people. This school formally adopted the name Ritsumeikan in 1913 and was finally given the status of a university in 1922.



Kinmochi Saionji  
(1849-1940)



Kojuro Nakagawa  
(1866-1944)

The school spirit of liberalism and internationalism advocated by Prince Saionji was combined with the ideals of academic freedom and vivacity pursued by Kojuro Nakagawa, and became a tradition of the university. This tradition also survived the intense suppression of the prewar days, as evidenced by the fact that Ritsumeikan University accepted seventeen professors who were forced by the government to leave Kyoto Imperial University (present-day Kyoto University) for their pacifist activities.

After World War II, Ritsumeikan adopted the educational philosophy of peace and democracy, faithful to the spirit of the Japanese Constitution and the Education Fundamental Law. In 1948, Ritsumeikan became one of the first Japanese universities to be reorganized under the new education system. Ritsumeikan carried out extensive reforms to ensure democratic administration of the university to better serve society as an educational institution open to the public.

In the 1990s, in response to the changes leading to a globalized information society, each faculty went through curriculum revisions to

accommodate the changing global complexities and innovations affecting higher education. One significant part of these changes was the introduction of the international education programs such as the Five-Week Intercultural Programs; the One-Year Program; Ritsumeikan-UBC (the University of British Columbia) Academic Immersion Program; and the Dual Undergraduate Degree Program / Dual Masters Degree Program with American University. As a result of these programs and the extensive global network Ritsumeikan has developed, the university now has one of the largest international student bodies in western Japan, offering numerous invaluable overseas study opportunities to its students.

Today, Ritsumeikan University offers a wide range of courses in advanced studies at Kinugasa Campus in Kyoto, Biwako-Kusatsu Campus (BKC) in Shiga, and Osaka Ibaraki Campus (OIC) in Osaka. The year 2020 will mark the 150th anniversary of the founding of the Ritsumeikan private school and the 120th year of the establishment of Ritsumeikan University. Previously, to commemorate the 100th anniversary, Ritsumeikan opened an international educational institution, Ritsumeikan Asia Pacific University (APU), in Oita Prefecture in April 2000. The addition of APU has given new momentum to Ritsumeikan as it continues to adhere to its founding spirit into the 21st century. To date, the Ritsumeikan Trust has evolved into a comprehensive educational institution consisting of two universities, four senior high schools, four junior high schools, and one primary school.

## The Origins of the Name "Ritsumeikan"

The word ritsumei comes from a passage in the Jinxin chapter of the Discourses of Mencius. This passage states that:

"Some die young, as some live long lives. This is decided by fate. Therefore, one's duty consists of cultivating one's mind during this mortal span and thereby establishing one's destiny."



## Ritsumeikan Timeline

1869 Prince Kinmochi Saionji founds the private academy "Ritsumeikan" on the site of the Kyoto Imperial Palace	Management is established at BKC	2012 Graduate Schools of Information Science and Engineering and Life Sciences are established / In College of Science and Engineering, Department of Electrical and Electronic Engineering and Department of Photonics are combined to form Department of Electrical and Electronic Engineering / Department of VLSI System Design changes its name to Department of Electronic and Computer Engineering / Department of Mechanical Engineering and Department of Micro System Technology are combined to form Department of Mechanical Engineering / In College of Letters, 14 majors and programs are combined and 8 programs and 18 majors are established	Management, and Graduate School of Management are moved to OIC / Department of Pharmaceutical Sciences is established in College of Pharmaceutical Sciences
1900 Kojuro Nakagawa, former secretary of Prince Saionji, establishes the Kyoto Hosei School	2006 Suzaku Campus is established in Kyoto City's Nakagyo Ward / Ritsumeikan Moriyama Senior High School is established in Moriyama City, Shiga Prefecture / Ritsumeikan Primary School is established in Kyoto's Kita Ward / Graduate School of Management is established at Suzaku Campus	2013 Community and Regional Policy Studies Major is established in College of Policy Science / Dalian University of Technology-Ritsumeikan University International School of Information Science and Engineering is established	2016 College of Comprehensive Psychology is established / Hirai Kaichiro Memorial Library is opened
1913 The school adopts the name "Ritsumeikan"	2007 College of Image Arts and Sciences is established / Ritsumeikan Moriyama Junior High School is established in Moriyama City, Shiga Prefecture / Graduate School of Public Policy is established at Suzaku Campus / In College of Social Sciences, Department of Social Sciences, and Department of Human Welfare are combined to form Department of Social Sciences / Tokyo Campus is established	2014 Graduate School of Pharmacy is established / Major in Informatics of Behavior and Cultures is established in Graduate School of Letters and the system of 2 majors with 15 specialized courses is established / Ritsumeikan Junior and Senior High School moves from Fukakusa Campus to Nagaokakyo Campus	2017 Graduate School of Professional Teacher Education is established / In College of Information Science and Engineering, Information Science and Engineering course is established to form seven courses in one college / College of Economics is reorganized to form two majors in one department
1922 The school name officially changes to Ritsumeikan University	2008 Colleges of Life Sciences and Pharmaceutical Sciences are established	2015 Osaka Ibaraki Campus (OIC) is established in Ibaraki City, Osaka Prefecture / College of Business Administration, College of Policy Science, Graduate School of Business Administration, Graduate School of Policy Science, Graduate School of Technology	2018 College of Gastronomy Management is established / American University-Ritsumeikan University Joint Degree Program is established in College of International Relations / Graduate School of Science for Human Services is reorganized / Graduate School of Human Science is established
1945 President Hiroshi Suekawa introduces a series of democratic reforms, including the Plenary Council and Presidential Election System	2009 The Kyoto Studies Program and the Language and Communication Program are established in College of Letters		2019 College of Global Liberal Arts is established
1965 Kinugasa Campus is established in Kyoto City's Kita Ward	2010 College of Sport and Health Science and Graduate school of Sport and Health Science are established		2020 Major in Pharmaceutical Sciences in the Graduate School of Pharmacy is established (Master's Program)
1994 Biwako-Kusatsu Campus (BKC) is established in Kusatsu City, Shiga Prefecture / Uji Academy is merged with Ritsumeikan Uji Junior and Senior High School	2011 Global Studies Major is established in College of International Relations / Graduate School of Image Arts and Sciences is established		
1995 Keisho Academy is merged with Ritsumeikan Keisho Junior and Senior High School			
2000 Ritsumeikan Asia Pacific University is established in Beppu City, Oita Prefecture			
2004 Ritsumeikan University School of Law is established at Kinugasa Campus			
2005 Ritsumeikan University Graduate School of Technology			

# R2030 Ritsumeikan Academy Vision

To date, the Ritsumeikan Academy has pursued progressive education and research that gives expression to its educational philosophy of 'peace and democracy', which is rooted in the institution's founding ideals of 'freedom and innovation'. In 2010, we formulated the Academy Vision for 2020 with its slogan "Creating a Future Beyond Borders," and since then have assiduously pursued further institutional development.

Carrying forward this spirit and philosophy while paying respect to our history, we, the members of the Ritsumeikan Academy, hereby officially proclaim the R2030 Ritsumeikan Academy Vision, our formal expression of what we aim to become by the year 2030.

## R2030 Ritsumeikan Academy Vision

# Challenge **your** mind Change **our** future

Today, societies around the world are caught up in a whirlwind of change.

We face an uncertain future more difficult day by day to comprehend.

But the age demands of educational institutions a positive vision for the world of the future.

To realize the Ritsumeikan Vision, we must attract a diverse array of people while cultivating the virtues of flexibility and courage to change.

To this end, we must accept differing values and strive to better ourselves without fear of potential discord. Together, we will overcome the limitations that have, until now, held us back and apart.

Together, we will rise to the challenge to create a world in which myriad human endeavors lead to a bright future, filled with the promise of hope, peace, and freedom.

## R2030 Academy Vision: Ideal Shape of the Academy and Ideal Qualities in Our People

### Ideal Shape of the Academy

**An Academy that serves as a community hub for lifelong learning**  
We aim to become an Academy that serves as a "port of call" that learners can turn to as and when required, at each stage of their lives, and find a way to study that suits their needs, so they can develop the ability to tackle new challenges.

**An Academy that tackles the issues facing human society**  
We aim to become an Academy that strives to identify and find solutions for the myriad problems the world faces at various levels and on a variety of scales.

**An Academy dedicated to realizing diversity and inclusion**  
We aim to become an Academy that generates a multitude of connections while working with others and seeking to understand and respect individual points of view as premised on the range of diversity in society, including diversity among individuals, organizations, regions, countries, religions, customs, cultures and generations.

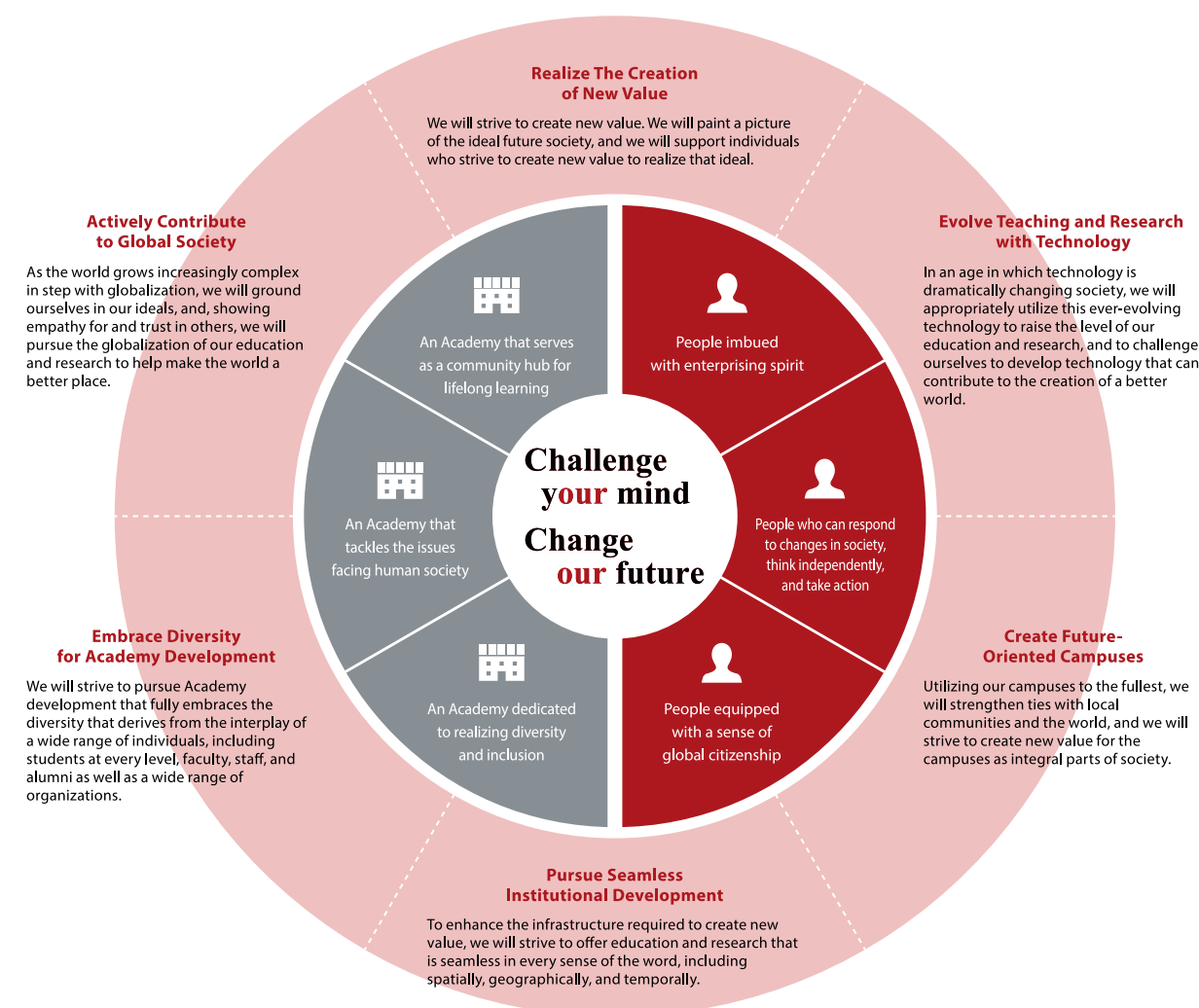
### Ideal Qualities in Our People

**People imbued with enterprising spirit**  
Our people are strong-willed individuals who persevere to overcome obstacles without fear of disputes or failure.

**People who can respond to changes in society, think independently, and take action**  
Our people understand social change and have the insight to recognize the myriad issues that society faces, whilst at the same time taking affirmative steps to resolve them.

**People equipped with a sense of global citizenship**  
Our people recognize that they are members of a global society, and take up the challenge of creating a multicultural society by respecting the standpoints and views of others and seeking harmonious solutions to problems.

## Policy Objectives of the R2030 Academy Vision





# R Ritsumeikan's 'Challenge-Action'

The Ritsumeikan Academy encourages and supports student, faculty and staff endeavors to overcome all types of borders in their attempts to solve the issues that face human society today. In 2019, we began our 'Challenge-Action' initiative to not only support uniquely individual activities, but to connect them cross-sectionally, encourage their expansion to raise the level of the entire academy,

and energize academy-wide projects. The promotion of Sustainable Development Goals (SDGs) and the 'Visualization of Knowledge' related to Ritsumeikan's education and research have been designated as current priority areas that will continue to be regarded as such into the near future.

## ■ Promotion of Sustainable Development Goals (SDGs)

The Ritsumeikan Academy aims to become an academy that will connect with the world and take on the challenge of facing issues that are shared by all. We have a history of actively working on many of the issues that society is facing. Such efforts include, but are not confined to, educational and research activities and social collaboration and redefining the SDGs\* framework for the issues that are common around the world. We aim to provide our support as an academy and contribute in a way that is appropriate of an educational institution.



The Ritsumeikan Academy supports the promotion of the sustainable development goals (SDGs).  
Ritsumeikan SDGs web page: <http://www.ritsumeai.ac.jp/sdgs/>



Fair Trade organization 'beleaf'



Active For All base



Kyoto Museum for World Peace



Activities both within and outside of the university that promulgate Fair Trade.



A university initiative to build a future where anyone can become healthy by exercising without realizing it.



Being conscious of the university's social responsibilities in the creation of peace and nurturing peace advocates.

\*SDGs refer to the international goals listed in "The 2030 Agenda for Sustainable Development" that were adopted at the United Nations Summit on Sustainable Development held in September 2015. It consists of 17 goals and 169 targets.

## ■ 'Visualization of Knowledge' at Ritsumeikan

'Visualization of Knowledge' at Ritsumeikan refers to the implementation of measures to ensure the educational and research results of the academy to date are widely available through the provision of, for example, a venue for the sharing of real experiences, easily accessible digital content etc. Presently work is progressing on creating a campus that facilitates the meeting of knowledge, a feeling of excitement, and moving experiences that pique intellectual curiosity.



"Marble", a ground delivery robot, makes its debut in Japan (Biwako-Kusatsu Campus)

# The Ritsumeikan Trust

## ■ Ritsumeikan Suzaku Campus

1 Nishinokyo-Suzaku-cho, Nakagyo-ku, Kyoto 604-8520

## ■ Ritsumeikan University Kinugasa Campus

56-1 Toji-in Kitamachi, Kita-ku, Kyoto 603-8577

## ■ Ritsumeikan University Biwako-Kusatsu Campus

1-1-1 Noji-higashi, Kusatsu, Shiga 525-8577

## ■ Ritsumeikan University Osaka Ibaraki Campus

2-150 Iwakura-cho, Ibaraki, Osaka 567-8570

## ■ Ritsumeikan Asia Pacific University

1-1 Jumonjibaru, Beppu, Oita 874-8577

URL: <http://en.apu.ac.jp/>

## ■ Ritsumeikan Tokyo Campus

Sapia Tower 8th floor,  
Marunouchi 1-7-12, Chiyoda-ku, Tokyo, Japan

## Overseas Offices

### ■ Ritsumeikan UK Office (London)

Room 241, Old Building, SOAS,  
University of London, Thornhaugh Street,  
Russell Square, London, WC1H 0XG, UK  
URL: <http://en.ritsumeai.ac.jp/international-outreach/offices/uk/>

### ■ Ritsumeikan India Office (Delhi)

WeWork Platina Tower, Mehrauli-Gurgaon Rd,  
Gurugram, Haryana 122002, India  
(Near Sikanderpur Metro Station)  
URL: <http://en.ritsumeai.ac.jp/international-outreach/offices/india/>

### ■ Ritsumeikan University Beijing Office (Beijing)

JSPS Beijing Office A404, China Foreign Language Mansion, No.89  
Xisanhuan Beilu, Haidian District, Beijing 100089, China  
URL: <http://en.ritsumeai.ac.jp/international-outreach/offices/beijing/>

### ■ Ritsumeikan University Vietnam Office (Hanoi)

9th Floor, Block A, Department of International Affairs, Foreign Trade  
University, 91 Chua Lang St, Dong Da, Hanoi, Vietnam  
URL: <http://en.ritsumeai.ac.jp/international-outreach/offices/vietnam/>

## ■ Ritsumeikan Junior High School Ritsumeikan Senior High School

1-1-1 Choshi, Nagaokakyo, Kyoto 617-8577  
URL: <http://www.ritsumeai.ac.jp/fkc/eng/>

## ■ Ritsumeikan Uji Junior High School Ritsumeikan Uji Senior High School

33-1 Hachikenadani Hirono-cho, Uji, Kyoto 611-0031  
URL: [http://www.ujc.ritsumeai.ac.jp/ujc\\_e/](http://www.ujc.ritsumeai.ac.jp/ujc_e/)

## ■ Ritsumeikan Keisho Junior High School Ritsumeikan Keisho Senior High School

640-1 Nishinopporo, Ebetsu, Hokkaido 069-0832  
URL: <http://www2.spc.ritsumeai.ac.jp/eng/>

## ■ Ritsumeikan Moriyama Junior High School Ritsumeikan Moriyama Senior High School

250 Miyake-cho, Moriyama, Shiga 524-8577  
URL: <http://www.ritsumeai.ac.jp/moriyama/eng/>

## ■ Ritsumeikan Primary School

22 Koyama-Nishi-Kamifusa-cho, Kita-ku, Kyoto 603-8141  
URL: <http://en.ritsumeai.ac.jp/primary/>

## ■ Ritsumeikan Osaka Umeda Campus

Osaka Fukoku Seimei Building 5th and 14th floors,  
Komatsubara-cho 2-4, Kita-ku, Osaka, Japan

## ■ Ritsumeikan University Washington, D.C. Office (Washington, D.C. )

1875 K Street NW, Suite 422, Washington, D.C. 20006, USA  
<http://en.ritsumeai.ac.jp/international-outreach/offices/dc/>

## ■ APU Korea Office (Seoul)

#608, Halla Classic Officetel 6th Floor,  
23 Gangnam Daero 84 Gil, Gangnam-gu, Seoul 135-934 Korea  
URL: <http://www.ritsapu-kr.com>

## ■ Ritsumeikan Liaison Office located in Shanghai JiaoTong University (Shanghai)

Room D, 18F, Sun Tong Infoport Plaza No.55  
Huaihai West Rd., Shanghai City 200030 China

■ Vancouver ■ Taipei ■ Jakarta ■ Bangkok  
■ Ho Chi Minh City ■ Hanoi

### Kinugasa Campus

		Departments	Programs / Majors / Concentrations	
Colleges	College of Law	Law		
	College of Social Sciences	Social Sciences	Social Sciences / Media and Society / Sports and Society / Children and Society / Human Welfare	
	College of International Relations	International Relations	International Relations / Global Studies	
		AU-RU Joint Degree Program <sup>(1)</sup>		
	College of Letters	Humanities	Human Studies	Philosophy and Ethics / Educational Anthropology
			Japanese Literature	Japanese Literature / Japanese Language and Information Science
			Japanese History	Japanese History / Archaeology and Cultural Heritage
			East Asian Studies	Chinese Literature and Philosophy / East Asian History / Modern East Asian Languages and Cultures
			Global Studies	English and American Literature / European and Islamic History / Arts and Cultures
			Area Studies	Geography / Regional Tourism
			International Studies and English Communication	Culture and Area Studies of English-Speaking Regions / Global English and English Education
			Language and Communication	Communication and Expression / Linguistics and Japanese Language Education
	College of Image Arts and Sciences	Image Arts and Sciences		



Graduate Schools	Graduate School of Law	Law
	Graduate School of Sociology	Applied Sociology
	Graduate School of International Relations	International Relations
	Graduate School of Letters	Humanities / Informatics of Behavior and Cultures
	Graduate School of Image Arts	Image Arts
	Graduate School of Language Education and Information Science	Language Education and Information Science
	Graduate School of Core Ethics and Frontier Sciences	Core Ethics and Frontier Sciences

### Osaka Ibaraki Campus (OIC)

		Departments	Programs / Majors / Concentrations
Colleges	College of Business Administration	International Business Administration	
		Business Administration	Administration Strategy • Entrepreneurship / Accounting and Finance / Marketing
	College of Policy Science	Policy Science	Policy Science / Community and Regional Policy Studies
	College of Comprehensive Psychology	Comprehensive Psychology	Cognition and Behavior / Development and Support / Society and Relation
	College of Global Liberal Arts <sup>(2)</sup>	Global Liberal Arts	

Graduate Schools	Graduate School of Business Administration	Business Management
	Graduate School of Policy Science	Policy Science
	Graduate School of Human Science	Human Science
	Graduate School of Technology Management	Technology Management
	Graduate School of Management	Management

### Biwako-Kusatsu Campus (BKC)

		Departments	Programs / Majors / Concentrations
Colleges	College of Economics	Economics	Global Studies / Economic Studies
	College of Sport and Health Science	Sport and Health Science	Sports Science / Health Exercise Science / Sports Education / Sports Management
	College of Gastronomy Management	Gastronomy Management	
	College of Science and Engineering	Mathematical Science	
		Physical Sciences	
		Electrical and Electronic Engineering	
		Electronic and Computer Engineering	
		Mechanical Engineering	
		Robotics	
		Civil and Environmental Engineering	
		Architecture and Urban Design	
	College of Information Science and Engineering	Information Science and Engineering	System Architect / Security and Networks / Frontier Social Design / Physical Computing / Audio and Visual Media Technology / Artificial and Natural Intelligence / Information Systems Science and Engineering
	College of Life Sciences	Applied Chemistry	
		Biotechnology	
		Bioinformatics	
		Biomedical Sciences	
	College of Pharmaceutical Sciences	Pharmacy (6-year track)	
		Pharmaceutical Sciences	

Graduate Schools	Graduate School of Economics	Economics
	Graduate School of Sport and Health Science	Sports and Health Science
	Graduate School of Science and Engineering	Advanced Mathematics and Physics / Advanced Electrical, Electronic and Computer Systems / Advanced Mechanical Engineering and Robotics / Advanced Architectural, Environmental and Civil Engineering
	Graduate School of Information Science and Engineering	Advanced Information Science and Engineering
	Graduate School of Life Sciences	Advanced Life Sciences
	Graduate School of Pharmacy	Pharmacy (4-year Doctoral Program)
		Pharmaceutical Sciences

### Suzaku Campus

		Majors
Graduate Schools	Graduate School of Public Policy <sup>(3)</sup>	Public Policy
	School of Law	Legal Training
	Graduate School of Professional Teacher Education	Major in Teaching Profession and Educational Practices

Notes:  
 (1) American University-Ritsumeikan University Joint Degree Program  
 (2) Dual Degree Program with the Coral Bell School of Asia Pacific Affairs at the Australian National University  
 (3) Discontinued recruitment of students in 2018



# Ritsumeikan University Kinugasa Campus



Kyoto is a city of learning, culture, and the arts. Kinugasa Campus is surrounded by the historic temples of Kinkakuji, Ryoanji, Ninnaji, and Tojiin, providing a serene environment for research and education. At Kinugasa Campus, our emphasis is on the social sciences and humanities. Kinugasa Campus is home to five colleges (Colleges of Law, Social Sciences, International Relations, Letters, and Image Arts and Sciences), seven graduate schools, as well as research facilities including the Art Research Center, making it an integrated education and research center for humanities and social sciences. In April 2016, the Hirai Kaichiro Memorial Library was also opened. It serves as the centerpiece of Ritsumeikan's learning community, promoting new and engaging active learning styles.

Haradani Field



Hiragino Field



## Kinugasa Campus

Address: 56-1 Toji-in Kitamachi, Kita-ku, Kyoto 603-8577

Student enrollment as of May 1, 2020

Colleges	Total Number of Students	Number of International Students	Year of Establishment
College of Law	3,222	52	1900
College of Social Sciences	3,487	82	1965
College of International Relations	1,403	241	1988
College of Letters	4,069	84	1927
College of Image Arts and Sciences	680	49	2007
Total	12,861	508	

Graduate Schools	Total Number of Students	Number of International Students	Year of Establishment
Graduate School of Law	54	6	1950
Graduate School of Sociology	141	39	1972
Graduate School of International Relations	187	145	1992
Graduate School of Letters	217	59	1950
Graduate School of Image Arts	19	9	2011
Graduate School of Language Education and Information Science	78	55	2003
Graduate School of Core Ethics and Frontier Sciences	168	23	2003
Total	864	336	

## Kyoto Museum for World Peace, Ritsumeikan University

The first peace museum in the world to be established by a university, Kyoto Museum for World Peace was established in May of 1992 to help people learn from the past and to promote future peace.





# Ritsumeikan University Biwako-Kusatsu Campus (BKC)

Biwako-Kusatsu Campus (BKC) was established as an education and research center in April of 1994 with the aim of creating a world-class campus which integrates the humanities and sciences. To this end, faculty, staff, and students at BKC are making efforts towards the development of new education and research systems. They are actively pursuing research and the creation of new industries through industry-government-academia collaboration and community involvement. Faculty and staff at BKC are combining cutting-edge science with social sciences and constructing a diverse

educational system that goes beyond existing academic fields. In addition, the construction of the BKC Sports and Health Commons was completed in September 2016. Under the concept of "Creating a sports and health community hub," the facilities are used for regular courses, extracurricular activities and research activities, and offer health promoting programs necessary for students, faculty and staff as well as people from the local community to voluntarily establish a healthy lifestyle.



## BKC Green Field

BKC Green Field is equipped with an athlete clubhouse and two artificial turf fields exclusively for the American football and rugby teams.

## Biwako-Kusatsu Campus (BKC)

Address: 1-1-1 Noji-higashi, Kusatsu, Shiga 525-8577



Student enrollment as of May 1, 2020

Colleges	Total Number of Students	Number of International Students	Year of Establishment
College of Economics	3,312	93	1903
College of Sport and Health Science	985	12	2010
College of Gastronomy Management	921 (First-, second-, and third-year students only)	21	2018
College of Science and Engineering	3,851	186	1914
College of Information Science and Engineering	1,953	253	2004
College of Life Sciences	1,283	60	2008
College of Pharmaceutical Sciences	817	10	2008
Total	13,122	635	

Graduate Schools	Total Number of Students	Number of International Students	Year of Establishment
Graduate School of Economics	120	95	1950
Graduate School of Sport and Health Science	91	4	2010
Graduate School of Science and Engineering	891	96	1963
Graduate School of Information Science and Engineering	441	112	2012
Graduate School of Life Sciences	279	30	2012
Graduate School of Pharmacy	63	0	2014
Total	1,885	337	





# Ritsumeikan University Osaka Ibaraki Campus (OIC)



Osaka Ibaraki Campus (OIC) is expected to facilitate collaboration with industry and government institutions, promote the Ritsumeikan Academy's activities on the frontline of social collaboration and is fully equipped with facilities which can provide adaptable learning and exchange spaces. OIC is home to four colleges and five graduate schools. The campus is based on three core academic concepts: "Gateway to Asia," "Urban Co-creation" and "Community and Regional Collaboration." The concepts take advantage of the qualities of an urban situated campus and of the colleges and graduate schools that compose the campus.

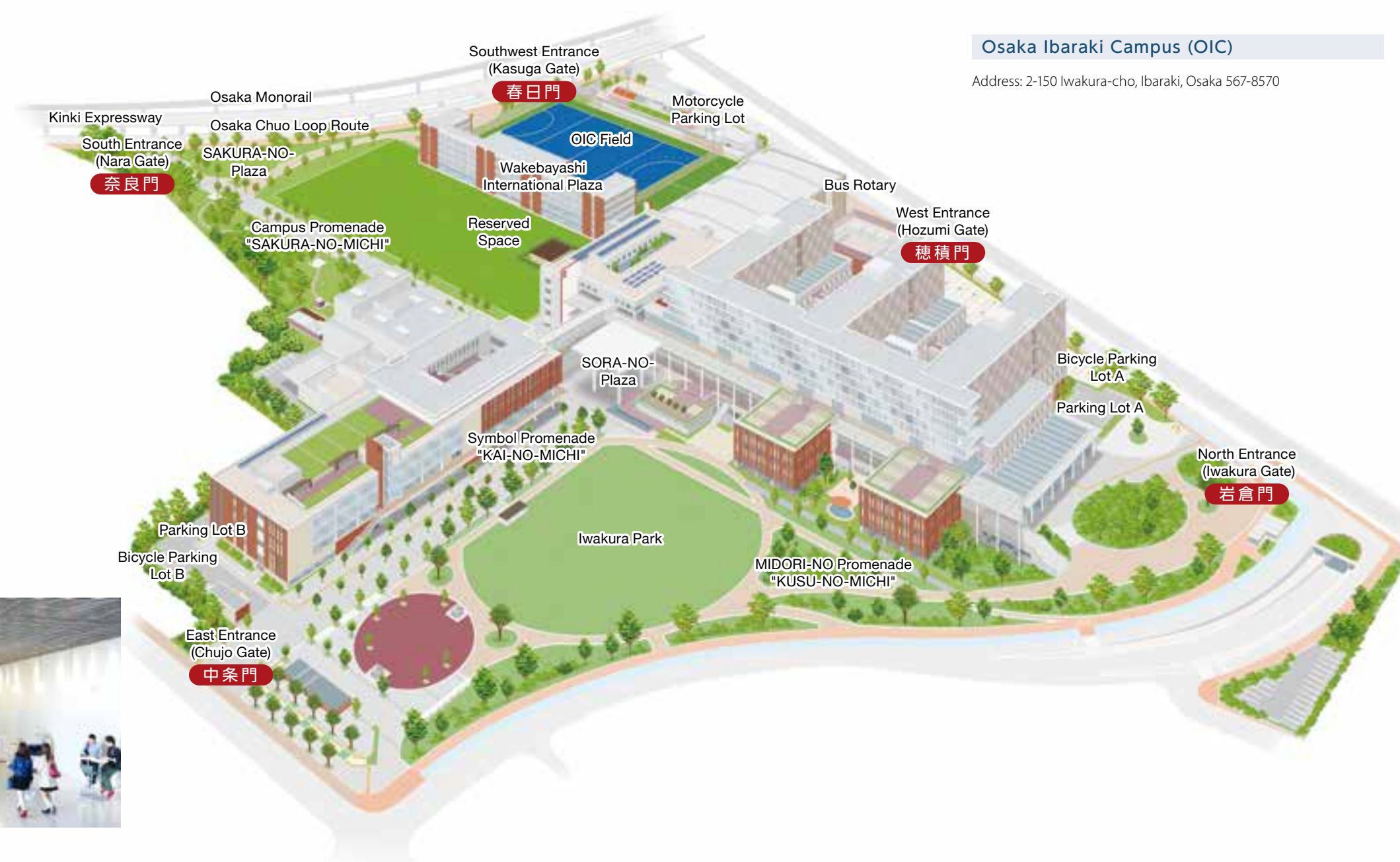
Colleges	Total Number of Students	Number of International Students	Year of Establishment
College of Business Administration	3,304	136	1962
College of Policy Science	1,700	86	1994
College of Comprehensive Psychology	1,153	39	2016
College of Global Liberal Arts	103 (First- and second-year students only)	33	2019
Total	6,260	294	

Student enrollment as of May 1, 2020

Graduate Schools	Total Number of Students	Number of International Students	Year of Establishment
Graduate School of Business Administration	87	66	1966
Graduate School of Policy Science	73	44	1950
Graduate School of Human Science	197	21	2018
Graduate School of Technology Management	156	79	2005
Graduate School of Management	119	58	2006
Total	632	268	

## Osaka Ibaraki Campus (OIC)

Address: 2-150 Iwakura-cho, Ibaraki, Osaka 567-8570







Established in September 2006 as a local and global center of knowledge, Suzaku Campus hosts several high level professional graduate schools as well as the Ritsumeikan Trust headquarters. The School of Law aims to cultivate internationally minded legal professionals equipped to meet present-day challenges. The Graduate School of Professional Teacher Education aims to become a path bridging theory and practice. It offers a unique educational program that incorporates a number of field works and long-term practical studies in collaboration with the education boards of Kyoto, Shiga and Osaka Prefectures, where Ritsumeikan University's affiliated schools and campuses are located. With meticulous instruction from the research and teaching faculty members, the students can gain high competency as a teacher and the ability to become a successful school leader in the future.

Student enrollment as of May 1, 2020

Colleges	Total Number of Students	Number of International Students	Year of Establishment
Graduate School of Public Policy*	1	0	2007
School of Law	91	0	2004
Graduate School of Professional Teacher Education	56	0	2017
Total	148	0	

\* Discontinued recruitment of students in 2018.



### Suzaku Campus

Address: 1 Nishinokyo-Suzaku-cho, Nakagyo-ku, Kyoto 604-8520



## Research Activities

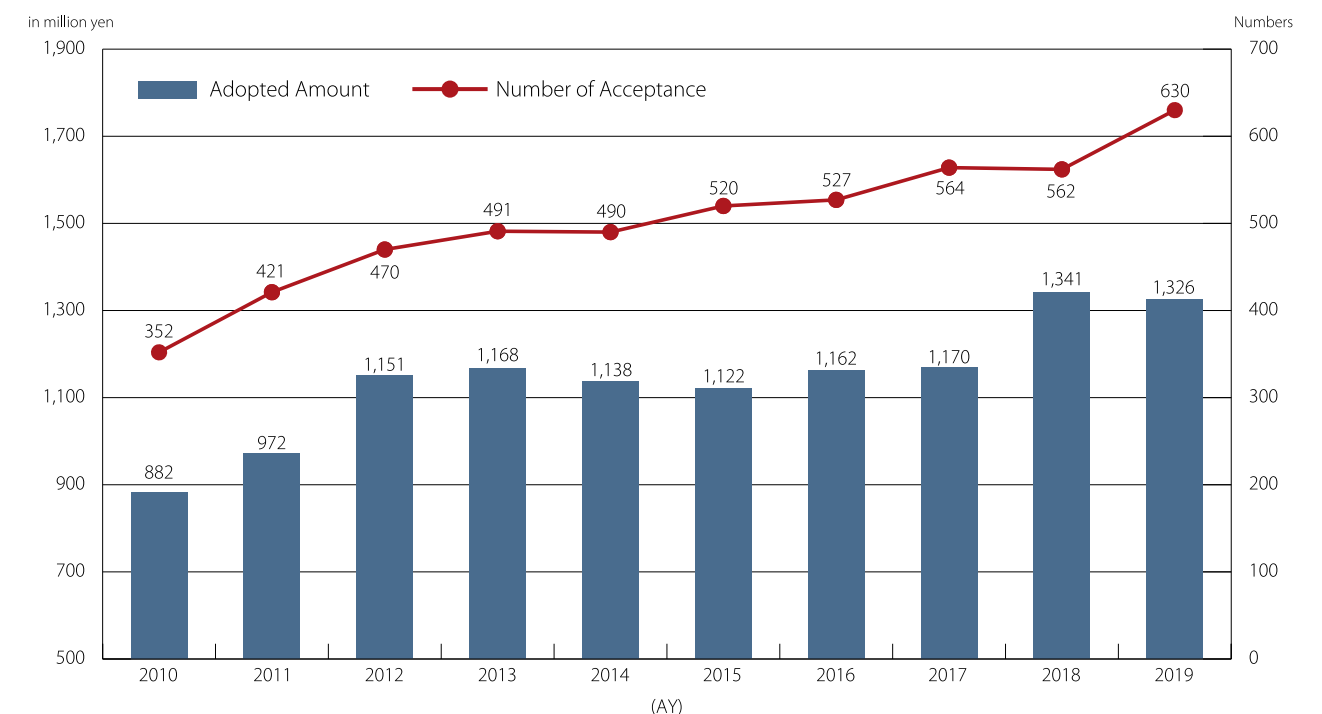
### Grants-in-Aid for Scientific Research (KAKENHI)

According to the Distribution of AY 2019 Grants-in-Aid for Scientific Research (KAKENHI) released in October 2019, Ritsumeikan University ranked 23rd in Japan, and third among private universities, in the amount of funding awarded and 23rd in Japan, and fourth among private universities, for the number of projects selected. This makes Ritsumeikan University the highest-ranking private university in western Japan in terms of both funding awarded and projects selected. In particular, the amount of funding awarded, which hovered in ¥1.1 billion range for six years in a row, jumped to ¥1.3 billion for the second year straight.

Looking at the breakdown by category (listing top 10 institutions of the total number of newly adopted projects in the past two years for each discipline), Ritsumeikan University placed within the top 10 in Japan in nine out of 65 categories, achieving its highest overall ranking of second place in "Sociology and Related Fields." It also ranked first among private universities for "Geography, Cultural Anthropology, Folklore and Related Fields." As this shows, Ritsumeikan University is leveraging its strengths to pursue innovative and pioneering research in a variety of fields. Furthermore, the share of female researchers accounting for the number of projects selected reached 21.9%, marking the fifth straight year of increase. In this way, one feature of Ritsumeikan University is the remarkable increase in the number of grant-in-aid awards obtained by female researchers.

Grants-in-Aid for Scientific Research, one type of competitive research funding granted by the Ministry of Education, Culture, Sports, Science and Technology, subsidizes basic and applied research in every field from the humanities and social sciences to the natural sciences. With an annual budget exceeding ¥200 billion, they are an indispensable source of funding for the development of Japan's science and technology.

### Ritsumeikan University Grant-in-Aid Award Amounts and Project Numbers



### Ritsumeikan Asia Pacific University Research Activities

At Ritsumeikan Asia Pacific University the Division of International Cooperation and Research and the Ritsumeikan Center for Asia Pacific Studies (RCAPS) collaborate in promoting research activities. The Asia Pacific Conference held once a year by RCAPS is the largest academic conference for the humanities and social sciences held in English in Japan. More than 10 projects are adopted each year by Grants-in-Aid for Scientific Research, and among them APU has been accepted for the Grant-in-Aid International Joint Research Acceleration three years running. Further, APU was also selected for the "Ministry of Education, Culture, Sports, Science and Technology 2018 Private University Research Branding Project (Type B)" and will contribute to solutions to the problems of globalized modern society through the practices of its "Inclusive Leadership Base for Research, Training, and Practice" which makes use of APU's environment of multicultural coexistence.



### Ritsumeikan University Research Enhancement Mid-Term Plan

Possessing colleges and graduate schools in the humanities, social sciences, natural sciences, and various interdisciplinary fields, Ritsumeikan University looks to fully utilize its ability to create new research areas fused from its already diverse research activities. To help realize these ambitious goals “Ritsumeikan University Research

Enhancement Plan Phase III (AY2016-2020)” has been established. This five-year plan aims to develop a solid strategy to promote creative and diverse research, formulate a research base on par or above global standards, encourage the internationalization of research, and educate the next generation of young researchers.

### Basic Goals: To Become a Distinctive Global Research University

1. Bolster research infrastructure worthy of a “Distinctive Global Research University”
2. Foster young researchers and support female researchers in graduate schools and research organizations
3. Create distinctive hubs of knowledge creation
4. Establish a research promotion framework

### Six Policies for Promoting Research

1. Enhance fundamental research
2. Promote the globalization of research
3. Strengthen the capacity for disseminating research outcomes
4. Foster young researchers and provide support to female researchers
5. Create hubs of knowledge creation
6. Develop a research promotion framework

### Research Offices

The Research Offices of Ritsumeikan University act as central contact points for matters concerning research activities and they promote research exchanges between private enterprises and public research

institutions. This allows the offices to construct the perfect formation for any given issue and provide smooth collaboration between industry, academia, and government.

### Research Organizations, Research Institutes and Research Centers

At Ritsumeikan University we are focusing on bringing to fruition one of our Academy Vision pillars which is “striving to become a unique research university that contributes to humankind, nature and society”. We have established six research institutions to promote research in the fields of Humanities/Social Science and Natural Science to encourage the receipt of government sponsored Grants-

in-Aid (Kakenhi) research subsidies and to become a world research hub for unique and leading edge research. We actively engage in research exchange with national and regional government institutions and industry and contribute the results to society.



### Research Organizations, Research Institutes and Research Centers

(As of April 1, 2020)



In order to realize the ideas put forth in the Ritsumeikan Charter, the Ritsumeikan Academy has been engaged in a variety of international cooperation projects.

## ■ International Service and Cooperation Activities

### 1. Developing Agreements with Foreign and Domestic Government Agencies

The Ritsumeikan Academy is working together with various foreign and domestic governmental agencies, universities and other parties to establish universities and institutes. The Ritsumeikan Academy is currently providing support to Egypt-Japan University of Science and Technology (E-JUST), Malaysia Japan International Institute of Technology (MJIIT), Vietnam-Japan University (VJU) and Indian Institute of Technology Hyderabad (IIT-H) projects.

### 2. Human Resource Development Programs

Since 2004, the Ritsumeikan Academy has carried out a wide range of human resource development programs both within and outside Japan, working together with foreign and domestic governmental agencies and universities. The programs have covered trainings for university administration, conservation and risk management of historic towns for cultural tourism, tourism resources improvement, disaster mitigation, public policy and so forth, and have involved more than 1,700 participants from over 60 countries and regions.

### 3. Human Resource Development with Private Enterprises

The Ritsumeikan Academy, in cooperation with Cosmo Energy Exploration & Production Co., Ltd. and Abu Dhabi Oil Co.,Ltd., has been conducting the Japanese Language Teaching Program at ATHS (Applied Technology High School) in Abu Dhabi, UAE, since 2011. With academic support from the Ritsumeikan University Japanese Language Education Center, the program provides Japanese language and culture lessons and events for selected students from Grade 9 to 12, including a short-term summer school program at Ritsumeikan Affiliate Schools at the end of Grade 10.

### 4. Post Disaster Recovery Support

The Ritsumeikan Academy is dedicated to continue post disaster recovery support, both domestically and abroad, by using its international and domestic networks. In recent years, the Ritsumeikan Academy has actively been carrying out projects in areas affected by the Great East Japan Earthquake.

## ■ Confucius Institutes at Ritsumeikan University and Ritsumeikan Asia Pacific University

The Confucius Institutes are organizations that promote mutual understanding and cultural exchange between Japan and China, whilst also providing support to scholars of the Chinese language. The Ritsumeikan Academy worked in collaboration with the Chinese government and Peking University to establish the first ever institute in Japan in 2005, The Confucius Institute, followed thereafter by the establishment of Tokyo Confucius Classroom and BKC Confucius Classroom. In 2007, in collaboration with Zhejiang University, APU Confucius Institute was established, before 2008 saw the opening of Osaka Confucius Classroom, in collaboration with Tongji University.

The institutes provide a range of Chinese language classes from beginners through to advanced; lectures and seminars related to Chinese culture and society; practice-based workshops on Tai Chi, and Chinese: tea, dumplings and paper cutting; as well as playing host to public performances of Peking opera and other Chinese performing arts. The institutes also offer open-access libraries containing China-related books, and continue to develop activities related to exchange study support and the promotion of cultural exchange in general.



## Globalized Education and Developing Global Talent

At the Ritsumeikan Academy our goal is to meet the expectations of society and to develop individuals capable of leading our future. Ritsumeikan University (RU), Ritsumeikan Asia Pacific University (APU), and affiliated schools seek to actively promote and leverage the advantages of globalized education and the development of global talent. Both RU and APU have been selected for 5 projects in total since 2011 for the Inter-University Exchange Project and also for the Top Global University Project in 2014 by the Ministry of Education, Culture, Sports, Science and Technology (MEXT). In 2016 APU obtained accreditation from AACSB International, the Association to Advance Collegiate Schools of Business, a U.S.-based business school accreditation agency, gaining recognition as a provider of

world-class business education. With this recognition APU became the third AACSB-accredited institution in Japan, and is now pursuing partnerships with other AACSB-accredited schools around the globe. Times Higher Education (THE) has ranked APU as one of the top five private universities in Japan and the top private university in western Japan for three years running. In 2020, APU's Hospitality and Tourism program received UNWTO.TedQual certification from the United Nations World Tourism Organization. Accolades like these are an acknowledgment of the internationalization achieved by the Academy to date, and are certain to accelerate the pace of globalization through these and other opportunities.

## ■ Selected for the Inter-University Exchange Project by the Ministry of Education, Culture, Sports, Science and Technology (MEXT)

The project is aimed at nurturing global human resources who can succeed internationally, strengthening global expansion of university education, supporting international educational collaboration initiatives with universities in Asia, U.S. and Europe to promote Japanese students' studying abroad, and strategic acceptance of foreign students while guaranteeing the quality of higher education. Ritsumeikan University (RU) will implement the following projects.

### Projects

- Global PBL Program for Innovative Mind and Intelligence (RU: selected in AY2013)
- International academic-industrial collaborative PBL for science and engineering related personnel bridging Japan and South Asia with distinct culture and diversity (RU: selected in AY2014)
- Roadmap for Korea-China-Japan joint campus program to foster leaders in the humanities for East Asia (RU: selected in AY2011 and AY2016)
- APU-SEU\* Global Collaborative University Education (GLUE) (APU: selected in AY2011)

\* SEU: St. Edward's University

## ■ Selected for the Top Global University Project by MEXT

This project was established to support Japanese universities aiming to elevate comprehensive internationalization, to collaborate with preeminent universities overseas and to reform the universities toward a globalized environment. The project is divided into Top Type (Type A) which focuses on establishing the universities to provide world-class research and education whereas Global Traction Type (Type B) focuses on the promotion of internationalization of the universities. MEXT aims to provide the funds for a maximum of ten years. Both Ritsumeikan University and Ritsumeikan Asia Pacific University were selected as type B institutions, and both received 'A' grades on the interim evaluation in AY2017.

### Projects

- Bridging the World and Asia: Human development to collaborate across cultures and contribute globally to Asian communities (Ritsumeikan University)
- Global Learning: Toward New Horizons in University Education (APU)



Undergraduate Programs (for degree-seeking students)

Dual Degree Program between the ANU and Ritsumeikan University, College of Global Liberal Arts

In this 4 year Dual Degree Program, students will have the opportunity to graduate with 2 degrees - one from Ritsumeikan University, and one from The Australian National University.

American University-Ritsumeikan University Joint Degree Program, College of International Relations

In this 4 year joint undergraduate degree program, students will be jointly awarded a BA degree in Global International Relations from American University and Ritsumeikan University.

Global Studies Major, College of International Relations

In this 4 year BA program, students learn to analyze global affairs from a variety of perspectives as part of a diverse international student body.

Community and Regional Policy Studies Major, College of Policy Science

In this 4-year BA program, students study community and regional policy issues both in local and global context from interdisciplinary perspectives like political science, law, economics, sociology, environmentology, and urban engineering, and acquire the skills to design and implement policies in order to solve problems and play an active role not only regionally but also worldwide.

Information Systems Science & Engineering Course, College of Information Science and Engineering

Modern information systems are developed by diverse international teams from many countries; political and cultural borders are no longer boundaries. The main focus of education in the Information Systems Science and Engineering Course is to train people who can work in this quickly evolving technical world, as team members, as innovators, and as leaders.

Dual Undergraduate Degree Programs

Students study for approximately 2 years at each university and receive bachelor's degrees from both universities upon graduation. Jointly offered with: American University (USA), Sookmyung Women's University (South Korea), the University of International Business and Economics (China).

Other Programs (for non-degree-seeking students)

Study in Kyoto Program

A one or two semester program focusing on Japanese language and cultural studies; approximately 200 participants per year. Students join one of three tracks—the Intensive Japanese Language Track, the Open Study in English Track or the Business Track. Open Study in English and Business Track students study beginner-level Japanese while taking a range of courses taught in English together with Japanese students.

Ritsumeikan Summer/Winter Japanese Program

Ritsumeikan Summer Japanese Program (RSJP) and Ritsumeikan Winter Japanese Program (RWJP) are short-term intensive programs designed for studying the Japanese language and culture. We can also offer customized programs to meet the requirements and budget for your institution.

Graduate Programs

Graduate Degree Programs Offered in English

- 1
- Graduate School of Economics: Master of Economics / Doctor of Philosophy
- 2
- Graduate School of International Relations: Master of Arts in International Relations / Doctor of Philosophy
- 3
- Graduate School of Policy Science: Master of Arts in Policy Science / Doctor of Philosophy in Policy Science
- 4
- Graduate School of Science and Engineering: Master of Science, Master of Engineering / Doctor of Science, Doctor of Engineering
- 5
- Graduate School of Information Science and Engineering: Master of Engineering / Doctor of Engineering
- 6
- Graduate School of Life Sciences: Master of Science, Master of Engineering / Doctor of Science / Doctor of Engineering
- 7
- Graduate School of Technology Management: Doctor of Philosophy in Technology Management

Dual Master's Degree Program

Students study for approximately 1 year at each university and receive master's degrees from both universities upon graduation. Jointly offered with: American University (USA), Institute of Social Studies (Netherlands), Lancaster University (UK), ESECM Business School (France), Chung-Ang University (South Korea), Guangdong University of Foreign Studies (China) and more.

\* Program eligibility depends on graduate school of enrollment

Special Scholarship Programs

- 1
- Japanese Government (MEXT) Scholarship
- 2
- Japanese Grant Aid including JDS, PEACE, ABE, IITH, Pacific-LEADS, Innovative Asia, etc.
- 3
- Asian Development Bank-Japan Scholarship Program (ADB-JSP)
- 4
- Japan-International Monetary Fund (IMF) Scholarship Program for Asia
- 5
- Joint Japan / World Bank Graduate Scholarship Program (JJ/WBGSP)
- 6
- China Scholarship Council

Study Abroad Programs for RU Students

During the 2019 Academic Year, approximately 1,941 Ritsumeikan University (RU) students took part in study abroad programs, which include, but are not limited to, the following:

Program	Duration	Numbers at a Glance	Description
Global Fieldwork Project	1 week (Aug.-Sep.)	7 universities 30-60 students to each	This is a new type of experience-based initiation program. Students are divided into groups and conduct fieldwork such as culture, history, or sightseeing surveys in accordance with a theme decided by each group for a week at their destination location.
Intercultural Understanding Seminar / Second Foreign Language Seminar	4 weeks (Feb.-Mar., Aug.-Sep.)	18 courses 18-30 students to each	18 courses are available in 13 countries and regions. Participants in this program take part in intercultural communication seminars, foreign language classes and field trips.
Ritsumeikan-Showa Boston "Culture and Society Research" Program	4 weeks (Aug.-Sep.)	30 students	This introductory program is aimed at students with an interest in social and cultural issues. Students can gain a global perspective through the courses and fieldwork and may participate regardless of prior English ability.
Overseas Study Program	2-4 weeks (Feb.-Mar., Aug.-Sep.)	3 courses, 15-25 students to each	The program focuses on practical learning in specialized fields that diverge from rigid language learning and helps students put their on-campus learning into practice while studying abroad. The program offers students opportunities to take specialized lectures in English and go on field trips that facilitate connections between real life experience and the content of each program. In non-English speaking countries, students also learn the languages spoken in the respective countries where they are studying.
Asian Community Leadership Seminar	3 weeks (Aug.)	10 students	This program is jointly operated by Kyung Hee University (KHU, Korea), Tamkang University (TKU, Taiwan), and Ritsumeikan University (RU), consisting of a 3-week "mobility program", during which 30 students (10 from each institution) stay together for a week at each university. This program aims to discuss several social issues around the East Asia region with "Peace", "Asia", and "Future" as central concepts.
Ritsumeikan-Macquarie University "Australia-Japan Relations" Program	7 weeks (Aug.-Sep.)	30 students	Students study regular courses offered at Macquarie University in Australia by learning English and practical tips from the lectures and learn how to deal with different cultures.
One Semester Study Abroad Program	4 - 6 months	4 courses 20 - 36 students	This study abroad program takes place over one semester (4 - 6 months) at a host university. In 2020, programs are under way at Universiti Teknologi Mara in Malaysia, the University of Washington, the University of California, Davis in the USA and the University of York in the UK.
Ritsumeikan-University of Alberta "Language, Culture and Society in North America" Program	8 months (Aug. - Apr.)	4 students	Students take English language courses in their first semester and improve English skills while learning various topics on culture and society in Canada, with the aim of taking regular courses in their second semester.
Ritsumeikan-UBC Academic Immersion Program	8 months (Aug.- Apr.)	72 students	Jointly sponsored with a partner institution, the University of British Columbia (UBC) in Vancouver, this program intends to improve students' academic and English skills and develop internationally minded individuals through a unique curriculum jointly developed by Ritsumeikan and UBC and by experiencing life in Canada.
International PBL Program in ASEAN Countries	1 semester (Aug. - Jan.)	2 countries 6 universities 2 - 5 students to each	This is an education program focusing on "Project/Problem-Based Learning (PBL)" to develop flexible thinking in order to set tasks and solutions. By accepting students from a variety of countries and regions, a diverse range of students are able to work collectively to solve the numerous policy and social issues facing ASEAN countries and Japan. This program looks to not only offer opportunities to study abroad in Thailand or Indonesia, but also provide an integrated program that includes pre-departure preparation and post-completion studies.
Exchange Program	1 semester/ 1 year	1-5 students to each partner university	Students study abroad for one semester or one year at one of RU's student exchange partner institutions (140 universities in 31 countries and regions). Spring departure and fall departure are available.
Dual Degree Program	2 years	2 students (AY2019)	Students take courses in their major at both universities, and in approximately 4 years, upon graduation, are able to obtain bachelor degrees from both institutions (American University, Suffolk University, or University of Alberta).

With over 100 years of tradition and history, the Ritsumeikan Academy opened APU in April 2000 as Japan's first genuine international university.

APU's philosophy is to create a university campus that produces graduates with the skills they need to contribute to international society based on the vision of Freedom, Peace, and Humanity, International Mutual Understanding, and the Future Shape of the Asia Pacific Region. The APU campus is a truly multicultural and multilingual environment with half of the student population made up of international students from around the world and an equally diverse faculty. Furthermore, the unique Japanese / English bilingual education system allows students to develop high levels of language proficiency while also removing the language barrier and making it possible for outstanding young people around the world to study and earn a degree in Japan. This international learning environment reflects the commitment APU students and staff have to deepening mutual understanding and overcoming differences in race, religion, and culture.

APU has welcomed international students from 155 different countries and regions since its inception, and currently hosts international students from 90 countries and regions on campus. (As of May 1, 2020)

### Alumni Network

This international network of 36 chapters includes more than 19,000 graduates, and is a valuable asset to the University.

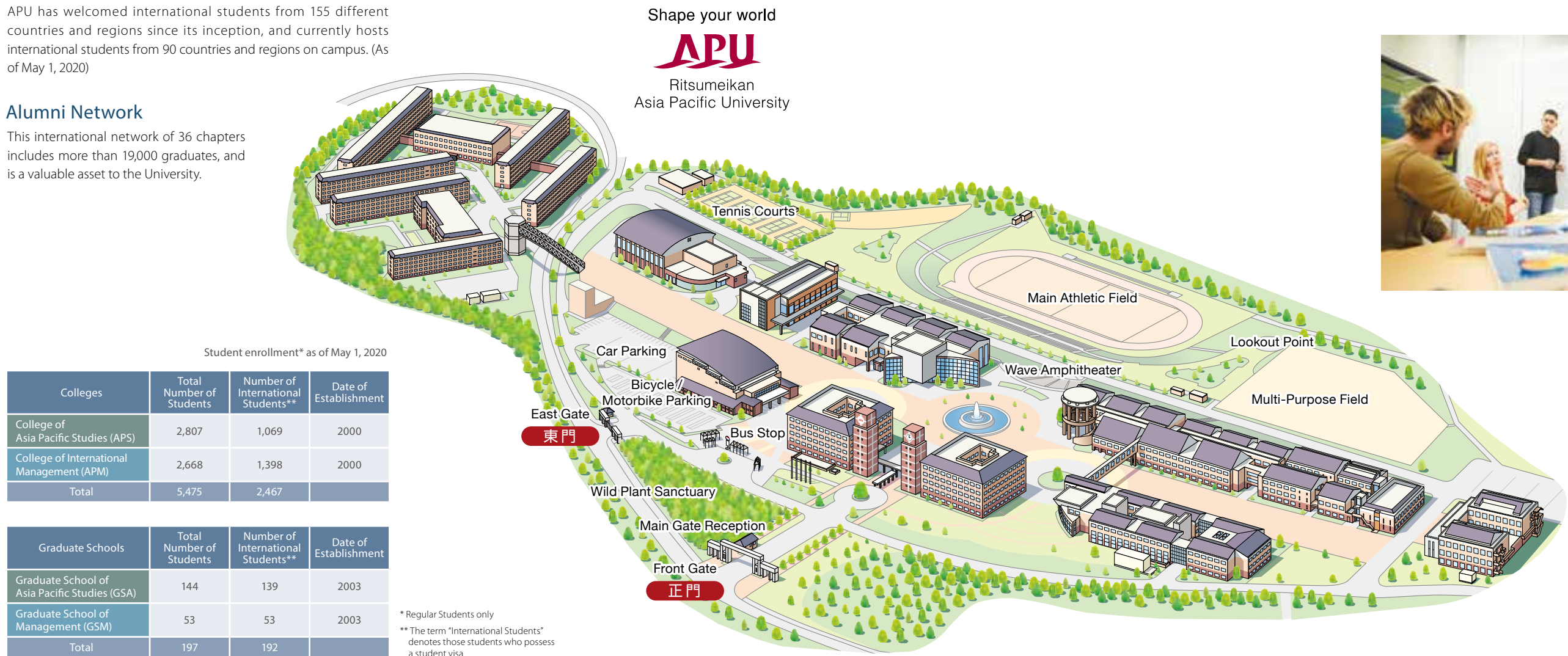


Ritsumeikan Asia Pacific University

Address: 1-1 Jumonjibaru, Beppu, Oita 874-8577  
URL: <http://en.apu.ac.jp/>

## A Truly International Environment

		Degree	Division / Specialization
Colleges	College of Asia Pacific Studies (APS)	Bachelor of Social Science	<ul style="list-style-type: none"> <li>Environment &amp; Development</li> <li>Hospitality &amp; Tourism</li> <li>International Relations &amp; Peace Studies</li> <li>Culture, Society &amp; Media</li> </ul>
	College of International Management (APM)	Bachelor of Business Administration	<ul style="list-style-type: none"> <li>Strategic Management &amp; Organization</li> <li>Marketing</li> <li>Accounting &amp; Finance</li> <li>Innovation &amp; Economics</li> </ul>
Graduate Schools	Graduate School of Asia Pacific Studies (GSA)	Master of Science in Asia Pacific Studies	<ul style="list-style-type: none"> <li>International Relations</li> <li>Society and Culture</li> </ul>
		Master of Science in International Cooperation Policy	<ul style="list-style-type: none"> <li>International Public Administration</li> <li>Public Health Management</li> <li>Sustainability Science (includes International Material Flow Management program)</li> <li>Tourism and Hospitality</li> <li>Development Economics</li> </ul>
	Graduate School of Management (GSM)	Master of Business Administration (MBA)	<ul style="list-style-type: none"> <li>Japanese Management</li> <li>Accounting and Finance</li> <li>Marketing and Management</li> <li>Innovation and Operations Management</li> </ul>





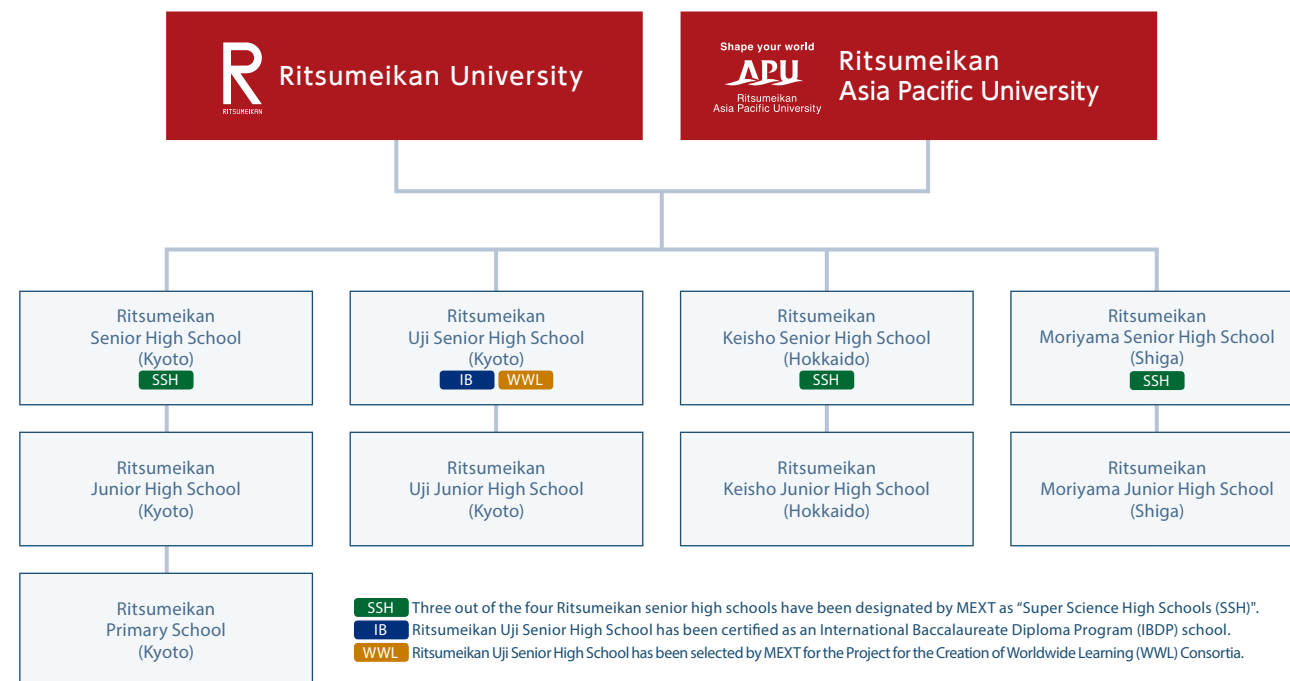
# R Ritsumeikan Academy's Integrated Primary and Secondary Education

The Ritsumeikan Trust is comprised of two universities, four senior high schools, four junior high schools, and one primary school. Educational institutions with academic tie-up agreements (partner schools) with Ritsumeikan University and Ritsumeikan Asia Pacific University offer bridge "Ritsumeikan Courses." Each affiliated school, starting with an integrated 12-year education system in a 4-4-4 format of primary, middle and high schools, offers a distinctive education through initiatives such as: offering an overseas exchange program from primary 5th grade, and International Baccalaureate courses for those planning to study abroad; selection by MEXT for the Project for the Creation of Worldwide Learning (WWL) Consortia; provision of a Super Science High School framework for nurturing science and technology human resources; and provision of advanced ICT education. The Ritsumeikan Trust, by enhancing such integrated education, aims to nurture people who can succeed as righteous

and ethical global citizens by developing a rich personality on sound scholastic ability.



## Organizational Chart of the Ritsumeikan Academy's Integrated Primary and Secondary Education



Number of Students:

As of May 1, 2020

School Name	Ritsumeikan Senior High School	Ritsumeikan Uji Senior High School	Ritsumeikan Keisho Senior High School	Ritsumeikan Moriyama Senior High School	Ritsumeikan Junior High School	Ritsumeikan Uji Junior High School	Ritsumeikan Keisho Junior High School	Ritsumeikan Moriyama Junior High School	Ritsumeikan Primary School
Total Number of Students	1,053	1,109	984	982	763	538	558	503	710
Total	7,200								

### Ritsumeikan Primary School

Kyoto City

In addition to fostering sound scholastic and human skills, Ritsumeikan Primary School has made "raising global citizens" an integral pillar of its education.

In English education starting from the first grade, the school focuses on establishing the grounding and independence needed to become an active global citizen by providing numerous input and output opportunities through language training and interaction with overseas schools in America, Canada, China, Singapore, Indonesia, Thailand, and Australia as well as exchange programs with APU students.



### Ritsumeikan Junior High School / Ritsumeikan Senior High School

Nagaokakyo City, Kyoto Prefecture

Having received an SSH designation for the fifth time in a row, Ritsumeikan Junior and Senior High School is promoting the creation of a system to leverage its international networks to develop global human resources for the fields of science and mathematics. Focused on international education and cutting-edge science education, the school undertakes a range of initiatives to provide students with the ability to cooperate with a diverse array of classmates and counterparts across national, cultural, and linguistic boundaries. The school also implements its part of the 12-year integrated education that begins in the primary school, and it provides education that aims to cultivate individuals who can create a new era and contribute to the future.



### Ritsumeikan Uji Junior High School / Ritsumeikan Uji Senior High School

Uji City, Kyoto Prefecture

Ritsumeikan Uji Senior High School has been selected by the Ministry of Education, Culture, Sports, Science and Technology to be a hub school for the Project for the Creation of Worldwide Learning (WWL) Consortia and is aiming to cultivate students' strengths so that they can play an active role in the future Japanese society, "Society 5.0". Taking advantage of being attached to a university, Ritsumeikan Uji Junior and Senior High School aims to be the top international education school in Japan. Distinctive educational programs include the International Baccalaureate Diploma Program (IBDP) as well as exchange programs and immersion programs. The school is also active in extracurricular activities and social contribution activities at a national level.



### Ritsumeikan Keisho Junior High School / Ritsumeikan Keisho Senior High School

Ebetsu City, Hokkaido

Ritsumeikan Keisho Junior and Senior High School aims to produce "world-class 18-year-olds". To raise students with a strong mentality to make contributions to the world, the school encourages students to ponder who they are learning for and who they are living for. Selected by the Ministry of Education, Culture, Sports, Science and Technology (MEXT) as a "Super Science High School (SSH)" for both the Basic and Priority Frames and also as a "Super-Global High School (SGH) (AY2019)", the school aims to nurture students in the fields of science and technology and develop future global leaders.



### Ritsumeikan Moriyama Junior High School / Ritsumeikan Moriyama Senior High School

Moriyama City, Shiga Prefecture

Designated as a "Super Science High School (SSH)" and a UNESCO Affiliated School, Ritsumeikan Moriyama Junior and Senior High School utilizes its rich Information and Communication Technology (ICT) environment to the fullest to produce a new style of inquiry and output learning. With Junior, Senior, University and Graduate education that is connected and BKC's science and engineering colleges at its core, on top of the existing junior and senior high school Academia Courses a new high school Global Course was established to work with the Frontier Course, which aims to help students enter the difficult-to-get-into universities. We aim to educate students to become global science leaders and contribute to the peaceful, democratic development of the international community.



Enrollment (Degree-Seeking Students, as of May 1, 2020)	
<b>Ritsumeikan University</b>	
<b>Undergraduate Students</b>	<b>32,243</b>
<b>Graduate Students</b>	<b>3,529</b>
Master's Programs	2,525
Doctoral Programs	555
5-year Doctoral Programs	168
4-year Doctoral Programs	15
Professional Degree Programs	266
International Students (included in total enrollment figures for RU)	<b>2,378</b>
Undergraduate Students	1,437
Graduate Students	941
<b>Ritsumeikan Asia Pacific University</b>	
<b>Undergraduate Students</b>	<b>5,475</b>
<b>Graduate Students</b>	<b>197</b>
International Students(included in total enrollment figures for APU)	<b>2,659</b>
Undergraduate Students	2,467
Graduate Students	192
<b>Affiliate School Students</b>	
<b>Total:</b>	<b>7,200</b>

Total Number of Alumni (as of March 31, 2020)	
Including "Jusotsu"*	
*When students graduate/finish multiple colleges or graduate schools.	
*Excluding thesis doctoral degrees.	
<b>Total Number of Ritsumeikan University Graduates</b>	
	<b>402,268</b>
<b>Total Number of Ritsumeikan Asia Pacific University Graduates</b>	
	<b>18,855</b>

Faculty and Staff (as of May 1, 2020)	
<b>Ritsumeikan University</b>	
<b>Faculty Members<sup>*1</sup></b>	<b>1,416</b>
Professors	798
Associate Professors	274
Lecturers with Non-Fixed Term Employment	19
Lecturers with Fixed Term Employment	36
Contract Lecturers	121
Assistant Professors	156
Administrative Assistants	12
Visiting Professors <sup>*2</sup>	222
<b>Ritsumeikan Asia Pacific University</b>	
<b>Faculty Members<sup>*1</sup></b>	<b>167</b>
Professors	61
Associate Professors	38
Tenured Senior Lecturers	21
Contract Lecturers	40
Assistant Professors	7
Visiting Professors <sup>*2</sup>	45
*1 Does not include part-time instructors.	
*2 Is not included in total faculty Members.	
<b>Affiliate Schools</b>	
<b>Faculty Members</b>	<b>583</b>
* Ritsumeikan University faculty serve as the Principal of Ritsumeikan Junior and Senior High School	
* The Principal of Ritsumeikan Junior and Senior High School concurrently serves as the Principal of Ritsumeikan Primary School	
<b>Total Administrative Staff in the Ritsumeikan Trust</b>	<b>1,453</b>
Full-Time	734
Contract*	719

\* Including specific Ritsumeikan University professional staff and specific APU staff

Graduate Degrees Conferred in the 2019 Academic Year	
<b>Ritsumeikan University</b>	
Doctoral Degrees	85
Master's Degrees	1,222
Juris Doctors	20
Master of Business Administration	47
Master of Professional Teacher Education	37
<b>Ritsumeikan Asia Pacific University</b>	
Doctoral Degrees	1
Master's Degrees	93

Facilities and Resources (as of March 31, 2020)	
Areas of School Buildings and Campuses (all Ritsumeikan Academy schools)	
Total Area of School Buildings	830,700.54 m <sup>2</sup>
Total Area of Campuses	2,318,860.92 m <sup>2</sup>

Books Owned (as of March 31, 2020)	
<b>Ritsumeikan University Libraries</b>	
	<b>3,350,767</b>
Japanese and Chinese	2,350,332
Western languages	1,000,435
<b>Ritsumeikan Asia Pacific University Libraries</b>	
	<b>233,470</b>
Japanese and Chinese	132,225
Western languages	101,245

\*Digital media not included.

Funding from Outside Institutions			(as of March 31, 2020)
Ritsumeikan University		(Unit : JPY)	
2019 Academic Year	Number	Amount	
Public Research Funding			
Grants-in-Aid for Scientific Research (MEXT / JSPS) *1	681	1,389,870,000	
MEXT-Supported Program for the Strategic Research Foundation at Private Universities	3	45,027,000	
Private University Research Branding Project	1	24,000,000	
Other Public Research Funding	149	1,407,235,294	
Research Funding for Industry-Academia Cooperation			
Contracted Research	287	404,773,141	
Joint Research	202	237,273,365	
Grants and Subsidies etc.	96	119,213,813	
Private Research Founding	121	160,936,522	
Revenue from Patents etc*2	33	12,062,157	
Other Revenue*3	38	17,523,085	
Total	1,611	3,817,914,377	

\*1: Including Grant-in-Aid for JSPS Fellows and fund for the Promotion of Joint International Research (Fostering Joint International Research) .

\*2: Royalties, Licensing and Transfer Fees.

\*3: Revenue from Research Consortium Membership Dues, Rental Fee for SR Center by Non-university Personnel.

Ritsumeikan University International Students (as of May 1, 2020)				
Country/Area	Degree-Seeking Students		Non-Degree Exchange Program Students	Total
	Under-graduate	Graduate		
<b>Asia</b>				
1 China	818	656	5	1,479
2 South Korea	385	23	5	413
3 Indonesia	53	56	2	111
4 Taiwan	27	20	5	52
5 India	24	14	0	38
6 Malaysia	19	2	0	21
7 Vietnam	17	23	0	40
8 Singapore	11	1	0	12
9 Hong Kong	8	3	2	13
10 Thailand	8	13	0	21
11 Myanmar	4	11	0	15
12 Nepal	2	7	0	9
13 Sri Lanka	2	0	0	2
14 Bangladesh	1	14	0	15
15 Philippines	1	5	0	6
16 Mongolia	1	1	0	2
17 Pakistan	1	5	0	6
18 Laos	0	6	0	6
19 Cambodia	0	4	0	4
20 Macau	0	1	0	1
21 Bhutan	0	2	0	2
22 Tajikistan	0	1	0	1
Subtotal	1,382	868	19	2,269
<b>Middle East</b>				
23 Saudi Arabia	2	2	0	4
24 Turkey	2	2	0	4
25 U.A.E.	1	0	0	1
26 Iran	1	0	0	1
27 Afghanistan	0	3	0	3
<b>Africa</b>				
28 Syrian	0	2	0	2
Subtotal	6	9	0	15
<b>Europe</b>				
29 Uganda	5	0	0	5
30 Somalia	1	1	0	2
31 South Africa	1	1	0	2
32 Namibia	1	0	0	1
33 Egypt	0	5	0	5
34 Nigeria	0	5	0	5
35 Zambia	0	1	0	1
36 Senegal	0	1	0	1
37 Malawi	0	1	0	1
38 Tunisia	0	1	0	1
39 Guinea	0	1	0	1
40 Mauritius	0	1	0	1
Subtotal	8	18	0	26
<b>North America &amp; South America</b>				
41 U.S.A	22	8	8	38
42 Canada	2	1	2	5
43 Mexico	1	0	2	3
44 Paraguay	1	0	0	1
45 Chile	0	1	0	1
46 Argentine	0	1	0	1
47 Honduras	0	1	0	1
48 Colombia	0	1	0	1
Subtotal	26	13	12	51
<b>Oceania</b>				
49 Australia	1	0	0	1
50 New Zealand	1	0	0	1
51 Vanuatu	0	1	0	1

\*The term "International Students"denotes those students who possess a student visa.

Ritsumeikan Asia Pacific University Students (as of May 1, 2020)				
Country/Area	Under-graduate	Graduate	Non-Degree Students	Total
<b>Asia</b>				
1 South Korea	523	2	1	526
2 Indonesia	366	26	0	392
3 China	357	10	0	367
4 Vietnam	311	20	0	331
5 Thailand	214	7	0	221
6 Bangladesh	96	13	0	109
7 Taiwan	81	3	4	88
8 India	70	10	1	81
9 Nepal	63	4	1	68
10 Sri Lanka	50	8	0	58
11 Mongolia	48	3	1	52
12 Malaysia	26	1	0	27
13 Myanmar	16	9	0	25
14 Cambodia	14	1	0	15
15 Philippines	10	4	0	14
16 Pakistan	8	5	0	13
17 Hong Kong	5	0	5	10
18 Singapore	6	1	0	7
19 Bhutan	2	0	0	2
20 Timor-Leste	0	2	0	2
21 Laos	0	1	0	1
Subtotal	2,266	130	13	2,409
<b>Middle East</b>				
22 Afghanistan	1	7	0	8
23 Iran	2	0	0	2
24 Yemen	1	1	0	2
25 Syrian	0	2	0	2
26 Israel	1	0	0	1
27 Turkey	1	0	0	1
Subtotal	6	10	0	16
<b>Africa</b>				
28 Kenya	3	3	0	6
29 Ghana	2	3	0	5
30 Uganda	3	1	0	4
31 Somalia	3	1	0	4
32 Nigeria	2	2	0	4
<b>Africa</b>				
33 Rwanda	3	0	0	3
34 Liberia	2	1	0	3
35 Morocco	2	0	0	2
36 Ethiopia	1	1	0	2
37 Angola	1	0	0	1
38 Cote d'Ivoire	1	0	0	1
39 Comoros	1	0	0	1
40 Sierra Leone	1	0	0	1
41 Zimbabwe	1	0	0	1
42 Botswana	1	0	0	1
43 Mozambique	1	0	0	1
44 Lesotho	1	0	0	1
45 South Africa	1	0	0	1
46 Cameroon	0	1	0	1
47 Tanzania	0	1	0	1
48 Burundi	0	1	0	1
Subtotal	30	15	0	45
<b>North America &amp; South America</b>				
49 U.S.A	36	7	3	46
50 Canada	5	0	3	8
51 Mexico	0	2	1	3
52 Ecuador	2	0	0	2
53 Costa Rica	2	0	0	2
54 Barbados	1	0	0	1
55 Dominican	0	1	0	1
56 Brazil	0	1	0	1
Subtotal	46	11	7	64
<b>Oceania</b>				
57 Australia	8	0	0	8
58 Samoa	4	0	0	4
59 Tonga	3	0	0	3
60 New Zealand	3	0	0	3
61 Fiji	1	0	0	1
62 Micronesia	1	0	0	1
63 Kiribati	0	1	0	1
64 Cook Islands	0	1	0	1

\*\*Non-Degree Students" includes non-degree students and special auditing students.

\*The term "International Students"denotes those students who possess a student visa.

\*The term "Domestic Students" includes international students with non-japanese nationality possessing status in Japan other than "college student visa".

Country/Area	Degree-Seeking Students		Non-Degree Exchange Program Students	Total
	Under-graduate	Graduate		
52 Palau	0	1	0	1
Subtotal	2	2	0	4
<b>Europe</b>				
53 U.K.	6	1	0	7
54 Sweden	3	0	3	6
55 Russian	2	1	0	3
56 Spain	1	1	6	8
57 Switzerland	1	0	0	1
58 Germany	0	1	5	6
59 France	0	1	9	10
60 Kyrgyz	0	10	0	10
61 Uzbekistan	0	4	0	4
62 Italy	0	2	3	5
63 Norway	0	0	4	4
64 Hungary	0	3	2	5
65 Finland	0	0	4	4
66 Ukraine	0	2	0	2
67 Bulgaria	0	1	1	2
68 Czech	0	2	2	4
69 Slovak	0	0	2	2
70 Malta	0	1	0	1
71 Slovenia	0	1	0	1
Subtotal	13	31	41	85
Total	1,437	941	72	2,450
Kinugasa Campus	508	336	52	896
Biwako-Kusatsu Campus	635	337	4	976
Osaka Ibaraki Campus	294	268	16	578
Suzaku Campus	—	0	0	0



## Europe

Austria	■ Management Center Innsbruck
	■ Salzburg University of Applied Sciences
	■ University of Applied Sciences Technikum Wien
Belgium	■ University of Continuing Education Krems
	■ Institut supérieur de traducteurs et interprètes (ISTI)
Bulgaria	■ University of Liege
	■ University of National and World Economy
Croatia	■ Zagreb School of Economics and Management
Cyprus	■ The Cyprus University of Technology
Czech	■ Charles University
	■ Masaryk University
Denmark	■ Copenhagen Business School
	■ University of Copenhagen
Finland	■ University of Southern Denmark
	■ Tampere University of Applied Sciences
France	■ Tampere University of Technology
	■ University of Helsinki
Germany	■ University of Turku
	■ Aix-Marseille University
Hungary	■ Bordeaux Montaigne University
	■ Ecole Normale Supérieure
Italy	■ ESCEM School of Business and Management
	■ French Business School
Japan	■ ICN Business School
	■ Jean Moulin Lyon 3 University
Korea	■ Paris Diderot University
	■ Sciences Po Bordeaux
Netherlands	■ Sciences Po Lille
	■ Strasbourg University
Poland	■ Toulouse 1 Capitole University
	■ University Toulouse - Jean Jaurès
Portugal	■ ASKO EUROPA-STIFTUNG
	■ Augsburg University of Applied Sciences
Russia	■ Bremen University of Applied Sciences
	■ FH Aachen University of Applied Sciences
Spain	■ Film University Babelsberg KONRAD WOLF
	■ Humboldt University of Berlin
Sweden	■ Jacobs University
	■ Julius Maximilian University of Würzburg
Switzerland	■ Nuremberg Institute of Technology
	■ Saarland University
U.K.	■ Trier University of Applied Sciences
	■ University of Cologne
U.S.A.	■ University of Freiburg
	■ University of Münster
U.S.A.	■ University of Tübingen
	■ Zeppelin University
U.S.A.	■ Budapest Business School
	■ Budapest University of Technology and Economics
U.S.A.	■ Eotvos Lorand University
	■ University of Pécs
U.S.A.	■ University of Iceland
	■ Dublin City University
U.S.A.	■ Ca' Foscari University of Venice
	■ Catholic University of the Sacred Heart
U.S.A.	■ Politecnico di Milano
	■ Sapienza University of Rome
U.S.A.	■ University of Bologna
	■ University of Cassino and Southern Lazio
U.S.A.	■ University of Florence
	■ University of Gastronomic Sciences
U.S.A.	■ University of Naples "L'Orientale"
	■ Asfendiarov Kazakh National Medical University
U.S.A.	■ Kazakh Economic University
	■ Kyrgyz-Turkish Manas University
U.S.A.	■ Vilnius University
	■ Leiden University
U.S.A.	■ Radboud University
	■ The International Institute of Social Studies of Erasmus University Rotterdam (ISS)
U.S.A.	■ Tilburg University
	■ Inland Norway University of Applied Sciences
U.S.A.	■ University of Bergen
	■ Jagiellonian University
U.S.A.	■ Polish Academy of Sciences
	■ Polish-Japanese Academy of Information Technology
U.S.A.	■ SGH Warsaw School of Economics
	■ Wrocław University of Economics
U.S.A.	■ ISCTE-Lisbon University Institute
	■ Romanian-American University
U.S.A.	■ Far Eastern Federal University
	■ Institute of Far Eastern Studies of the Russian Academy of Sciences

Azerbaijan	■ Institute of Oriental Studies of the Russian Academy of Sciences
	■ Moscow State Institute of International Relations (University) of the Ministry of Foreign Affairs of the Russian Federation (MGIMO)
	■ Saint Petersburg University
Belarus	■ Sakhalin State University
	■ Tomsk State University of Control Systems and Radioelectronics
Belgium	■ Alcala University of Alcalá
	■ Autonomous University of Barcelona
Bulgaria	■ IE University
	■ Saint Louis University, Madrid Campus
Croatia	■ The University of Granada
	■ The University of the Basque Country
Cyprus	■ University of Alicante
	■ University of Jaen
Czech	■ University of Santiago de Compostela
	■ Halmstad University
Denmark	■ Jönköping International Business School
	■ Linnaeus University
Finland	■ Lund University
	■ Malmö University
France	■ Södertörns högskola
	■ University of Gothenburg
Germany	■ Lucerne University of Applied Science and Arts, School of Business
	■ Zurich University of Applied Sciences
Greece	■ Cardiff University
	■ Centre for Alternative Technology
Hungary	■ King's College London
	■ Lancaster University
Iceland	■ Royal Holloway and Bedford New College, University of London
	■ School of Oriental and African Studies, University of London
Ireland	■ The Glasgow School of Art
	■ The University of Edinburgh
Italy	■ The University of Manchester
	■ The University of Sheffield
Japan	■ University of East Anglia
	■ University of Hertfordshire
Korea	■ University of Leeds
	■ University of Leicester
Latvia	■ University of Nottingham
	■ University of Southampton
Lithuania	■ University of Sussex
	■ University of Warwick
Malaysia	■ University of Westminster
	■ University of York
Malta	
Moldova	
Montenegro	
Netherlands	
Norway	
Poland	
Portugal	
Romania	
Russia	

Azerbaijan	■ Department of Education of Zhejiang Province
	■ Dongbei University of Finance & Economics
	■ East China Normal University
Belarus	■ East China University of Science and Technology
	■ Fudan University
Belgium	■ Fuzhou University
	■ Guangxi Normal University
Bulgaria	■ Harbin Institute of Technology
	■ Hebei University of Technology
Croatia	■ Huazhong University of Science and Technology
	■ Jiangxi Normal University
Cyprus	■ Jiangxi University of Finance and Economics
	■ Jilin University
Czech	■ Jinan University
	■ Nanjing Normal University
Denmark	■ Nanjing University
	■ Nanjing University of Aeronautics and Astronautics
Finland	■ Jeju National University
	■ Korea Maritime and Ocean University
France	■ Korea National Sport University
	■ Korea University
Germany	■ Kyung Hee University
	■ Kyungpook National University
Greece	■ Pai Chai University
	■ Pohang University of Science and Technology
Hungary	■ Pusan National University
	■ Sangmyung University
Iceland	■ Seoul National University
	■ Seoul Women's University
Ireland	■ Sogang University
	■ Sookmyung Women's University
Italy	■ Sungkyunkwan University
	■ The Catholic University of Korea
Japan	■ The University of Seoul
	■ University of Ulsan
Korea	■ Yeungnam University
	■ Yonsei University
Latvia	■ National University of Laos
	■ Institute of Strategic and International Studies (ISIS) Malaysia
Lithuania	■ Universiti Malaysia Sabah
	■ Universiti Putra Malaysia
Malaysia	■ Universiti Teknologi Malaysia
	■ Universiti Malaysia Sarawak
Malta	■ University of Malaya
	■ University of Science Malaysia
Moldova	■ Academy of Management
	■ Mongolian University of Science and Technology
Montenegro	■ National University of Mongolia
	■ Lahore University of Management Sciences
Netherlands	■ Ateneo de Manila University
	■ De La Salle University
Norway	■ SEAMEO SEARCA (Southeast Asian Regional Center for Graduate Study and Research in Agriculture)
	■ University of Asia and the Pacific
Poland	■ University of the Philippines
	■ Nanyang Technological University
Portugal	■ National University of Singapore
	■ Singapore Management University
Romania	■ Chartered Institute of Management Accountants (Sri Lanka Division)
	■ Information & Communication Technology Agency of Sri Lanka
Russia	■ National Science Foundation
	■ University of Colombo
Sweden	■ University of Ruhuna
	■ Academia Sinica
Switzerland	■ Feng Chia University
	■ Fu Jen Catholic University
U.K.	■ National Chengchi University
	■ National Chiao Tung University
U.S.A.	■ National Kaohsiung First University of Science and Technology
	■ National Sun Yat-sen University
U.S.A.	■ National Taichung University of Education
	■ National Taipei University of Technology
U.S.A.	■ National Taiwan Normal University
	■ National Taiwan University
U.S.A.	■ Shih Hsin University
	■ Southern Taiwan University of Science and Technology (STUST)
U.S.A.	■ Tamkang University

Azerbaijan	■ State University of Surabaya
	■ Syarif Hidayatullah State Islamic University Jakarta
	■ Trisakti University
Belarus	■ University of Brawijaya
	■ University of Indonesia
Belgium	■ Ajou University
	■ Chonbuk National University
Bulgaria	■ Chonnam National University
	■ Chung-Ang University
Croatia	■ Daegu University
	■ Dong-A University
Cyprus	■ Dongguk University
	■ Dongseo University
Czech	■ Ewha Womans University
	■ Gachon University
Denmark	■ Hallym University
	■ Hankuk University of Foreign Studies
Finland	■ Hanyang University
	■ Inha University
France	■ Jeju National University
	■ Korea Maritime and Ocean University
Germany	■ Korea National Sport University
	■ Korea University
Greece	■ Kyung Hee University
	■ Kyungpook National University
Hungary	■ Pai Chai University
	■ Pohang University of Science and Technology
Iceland	■ Pusan National University
	■ Sangmyung University
Ireland	■ Seoul National University
	■ Seoul Women's University
Italy	■ Sogang University
	■ Sookmyung Women's University
Japan	■ Sungkyunkwan University
	■ The Catholic University of Korea
Korea	■ The University of Seoul
	■ University of Ulsan
Latvia	■ Yeungnam University
	■ Yonsei University
Lithuania	■ National University of Laos
	■ Institute of Strategic and International Studies (ISIS) Malaysia
Malaysia	■ Universiti Malaysia Sabah
	■ Universiti Putra Malaysia
Malta	■ Universiti Teknologi Malaysia
	■ Universiti Malaysia Sarawak
Moldova	■ University of Malaya
	■ University of Science Malaysia
Montenegro	■ Academy of Management
	■ Mongolian University of Science and Technology
Netherlands	■ National University of Mongolia
	■ Lahore University of Management Sciences
Norway	■ Ateneo de Manila University
	■ De La Salle University
Poland	■ SEAMEO SEARCA (Southeast Asian Regional Center for Graduate Study and Research in Agriculture)
	■ University of Asia and the Pacific
Portugal	■ University of the Philippines
	■ Nanyang Technological University
Romania	■ National University of Singapore
	■ Singapore Management University
Russia	■ Chartered Institute of Management Accountants (Sri Lanka Division)
	■ Information & Communication Technology Agency of Sri Lanka
Sweden	■ National Science Foundation
	■ University of Colombo
Switzerland	■ University of Ruhuna
	■ Academia Sinica
U.K.	■ Feng Chia University
	■ Fu Jen Catholic University
U.S.A.	■ National Chengchi University
	■ National Chiao Tung University
U.S.A.	■ National Kaohsiung First University of Science and Technology
	■ National Sun Yat-sen University
U.S.A.	■ National Taichung University of Education
	■ National Taipei University of Technology
U.S.A.	■ National Taiwan Normal University
	■ National Taiwan University
U.S.A.	■ Shih Hsin University
	■ Southern Taiwan University of Science and Technology (STUST)
U.S.A.	■ Tamkang University

Azerbaijan	■ Tunghai University
	■ Yuan Ze University
	■ Burapha University
Belarus	■ Chiang Mai University
	■ Chulalongkorn University
Belgium	■ KASETSART UNIVERSITY
	■ Khon Kaen University
Bulgaria	■ Mahidol University
	■ National Institute of Development Administration
Croatia	■ Siam University
	■ Thai-Nichi Institute of Technology
Cyprus	■ Thammasat University
	■ The Federation of Thai Industries
Czech	■ Hanoi Medical University
	■ Hanoi National University of Education
Denmark	■ Hanoi University of Science and Technology
	■ Ho Chi Minh City University of Technology
Finland	■ Ho Chi Minh University of Pedagogy
	■ Hue University
France	■ Hue University of Agriculture and Forestry
	■ Ministry of Education and Training Vietnam
Germany	■ The Saigon International University
	■ The University of Danang
Greece	■ University of Engineering and Technology, Vietnam National University, Hanoi (VNU)
	■ University of Foreign Languages, Hue University
Hungary	■ Vietnam National University, Hanoi
	■ Vietnam National University, Ho Chi Minh City
Iceland	■ VNU Ho Chi Minh City University of Social Sciences and Humanities
	■ VNU University of Social Sciences and Humanities, Hanoi
Ireland	
Italy	
Japan	
Korea	
Latvia	
Lithuania	
Malaysia	
Malta	
Moldova	
Montenegro	
Netherlands	
Norway	
Poland	
Portugal	
Romania	
Russia	

Azerbaijan	■ Imam Sadiq University
	■ Shahid Beheshti University
	■ University of Jordan
Belarus	■ Higher Colleges of Technology
Belgium	
Bulgaria	
Croatia	
Cyprus	
Czech	
Denmark	
Finland	
France	
Germany	
Greece	
Hungary	
Iceland	
Ireland	
Italy	
Japan	
Korea	
Latvia	
Lithuania	
Malaysia	
Malta	
Moldova	
Montenegro	
Netherlands	
Norway	
Poland	
Portugal	
Romania	
Russia	

Azerbaijan	■ American University
	■ Appalachian State University
	■ Butler University
Belarus	■ California Institute of Integral Studies (CIIS)
	■ California State University, Fresno
Belgium	■ California State University, Long Beach
	■ California State University, Monterey Bay
Bulgaria	■ Chapman University
	■ College of Staten Island, The City University of New York
Croatia	■ Depaul University
	■ Fairleigh Dickinson University
Cyprus	■ Florida International University
	■ Georgetown University
Czech	■ Georgia College & State University
	■ Grand Valley State University
Denmark	■ Illinois College
	■ James Madison University
Finland	■ Minnesota State University Moorhead
	■ Ohio Northern University
France	■ Oklahoma City University
	■ Old Dominion University
Germany	■ Rensselaer Polytechnic Institute
	■ Rutgers, The State University of New Jersey
Greece	■ San Diego State University
	■ Simmons College
Hungary	■ St. Edward's University
	■ State University of New York College at Plattsburgh
Iceland	■ Suffolk University
	■ Tennessee Tech University
Ireland	■ The Georgia Institute of Technology
	■ The University of Alabama
Italy	■ The University of California, Berkeley
	■ The University of Mississippi
Japan	■ The University of New Mexico
	■ The University of North Carolina at Greensboro
Korea	■ The University of Oklahoma
	■ University at Buffalo, The State University of New York
Latvia	■ University of California, Davis
	■ University of Hawaii
Lithuania	■ University of Minnesota, Twin Cities
	■ University of Montana
Malaysia	■ University of North Texas



For more information, visit: <http://en.ritsumeikan-trust.jp/>

2020.7