

- 1) Take a look at the How to Apply page and check the application schedule.
- 2) Read the Application Guidelines and start gathering the required documents.
- 3) Start the application process!

*A Pre-Application Consultation Service is available to prospective applicants. Please see the How to Apply page for details.



Ready to Apply?

<http://en.ritsumei.ac.jp/skp/apply/howto/>



Schedule							
Application		Semester					
Start	Deadline	Orientation (Arrival in Japan)		Begins	Ends	Transcripts Sent Out	
Fall	Early Mar.	Early Apr.	Early Sep.	Sep. 26	Fall Semester	Jan. 31	Mid-Apr.
Spring	Early Oct.	Early Nov.	Mid-Mar.	Apr. 1	Spring Semester	Jul. 31	Early Oct.

*All dates subject to change. Please see the most recent Application Guidelines on the How to Apply page for the latest info.
*Specific dates will be announced on the SKP website.

R RITSUMEIKAN
Study in Kansai Program
International Center at Kinugasa Campus
56-1, Toji-in Kitamachi, Kita-ku, Kyoto, 603-8577 JAPAN
Email: skp@st.ritsumei.ac.jp



en.ritsumei.ac.jp/skp/

Study in Kansai Program



Study in Japan With SKP



Why Choose SKP?

The Study in Kansai Program (SKP) is Ritsumeikan University's non-degree study abroad program. The program brings together students from around the world at RU's campuses in Kyoto, Osaka, and Shiga Prefectures.

Here are reasons why SKP should be the next step on your academic journey:



1 Study in the Kansai Region, Where Modern and Traditional Cultures Harmonize

The Kansai region in western Japan is where the traditions, history, and culture of ancient Japan live on in modern times. Historical sites attract people from all over, making it a truly international place to pursue one's studies.

2 Take Classes in a Wide Range of Fields

In today's globalized world, RU strives to promote international education and research in a wide range of fields. We offer a broad range of courses spanning the social sciences, humanities, and natural sciences.



3 Intensive Japanese Language Studies

In the Intensive Japanese Language track (IJL), language classes are divided into levels from elementary to upper advanced, allowing students to study intensively in a class suitable to their skill level.

4 Experience Hands-On Learning

"Campus-Specific Courses" at each campus emphasize hands-on learning. For example, at Kinugasa Campus in Kyoto, students can study Japanese traditional arts directly under masters of each art form.



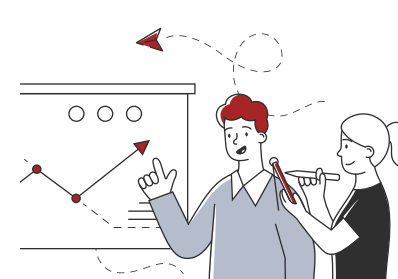
5 International Exchange With Students From Around the World

At RU, there are approximately 2,800 international students from around 106 countries.* Students can interact with peers from various countries, build new values, and make lifelong friends.

*as of May 2023

6 Interaction in Clubs and Extracurricular Activities

RU has about 450 clubs and "circles" (common interest groups). Students have opportunities to interact with Japanese students and other international students through clubs, circles, and events on campus.



7 Career Advancement

Improving Japanese language skills and becoming familiar with Japanese culture through SKP has shown to be useful to students who want to continue on to graduate school or find employment in Japan.

8 Scholarships Available (With No Repayment Necessary)

Students may be eligible to receive either a JASSO scholarship from the Japan Student Services Organization (80,000 yen/month) or a RUSSES scholarship offered by RU (40,000 yen/month).

*Applicants must be approved through a screening process.

**The RUSSES Scholarship Scheme may conclude at the end of 2026 Fall semester.



9 Abundant and Comprehensive Support

Friendly teachers, SKP Buddies and the SKP staff provide a variety of support to help students adjust to life in Japan quickly and make their study abroad experience more meaningful.

Which Track of Study Is Right for You?

SKP students select a track of study and campus in line with their desired language of instruction as well as the courses they wish to take.

Please use this chart to determine which track and campus is right for you.



Do you want to study Japanese language intensively and/or take courses in your major in Japanese?

Yes
I want to study primarily in Japanese.

No
I want to study primarily in English.

Have you passed JLPT N1, or achieved an equivalent score on the EJU?

No

Yes

IJL Intensive Japanese Language

The IJL track allows students to study Japanese language intensively. The track provides a well-balanced approach to improving reading, writing, listening, and speaking skills from the beginner level all the way to the advanced level of practical academic Japanese skills required for taking university courses.

International Relations / Letters / Social Sciences

Offered At : Kinugasa Campus (Kyoto Pref.)

*This track is only offered at Kinugasa Campus.



"...strengthen(ed) my language skills through a complete and thorough Japanese program."
- Giacomo Becchi, Italy

RCJ Regular Courses in Japanese

The RCJ track allows students with Japanese language proficiency equivalent to JLPT N1 to take both liberal arts and specialized courses offered by Ritsumeikan University colleges in Japanese.

Letters / Social Sciences / Law

Offered At : Kinugasa Campus (Kyoto Pref.)

Business Administration / Policy Science / Comprehensive Psychology / Image Arts and Sciences / Information Science and Engineering /

Offered At : Osaka Ibaraki Campus (Osaka Pref.)

Economics / Life Sciences / Sport and Health Science / Gastronomy Management / Science and Engineering*

Offered At : Biwako-Kusatsu Campus (Shiga Pref.)

*Additional procedures may be necessary. Please see the RCJ Track page for more information on registering for these courses.



"The (track) offers...the chance to study other subjects (in Japanese)... alongside Japanese students."
- Miyumi Aoki, United States

RCE Regular Courses in English

The RCE track allows students to take courses in English in a wide range of fields. Course offerings range from those in the humanities and social sciences, such as political science, economics, business administration, sociology, cultural anthropology, law, area studies, and contemporary Japanese culture, to courses in the natural sciences such as information (computer) science.

International Relations / Letters / Social Sciences

Offered At : Kinugasa Campus (Kyoto Pref.)

Business Administration / Policy Science / Information Science and Engineering

Offered At : Osaka Ibaraki Campus (Osaka Pref.)

Economics

Offered At : Biwako-Kusatsu Campus (Shiga Pref.)



"RU offers a plethora of academic courses taught in English for students to choose from."
- Cheng Da Kok, Singapore

About Ritsumeikan Courses:

- Max number of courses students can register: Up to 20 credits each semester
- Number of credits per course: Varies*
- Number of classes in each course: 14 classes per semester
- Number of classes that must be taken: 7 sessions per week**

*Please see each track's page for details.

**Under Japanese Law, Students must attend a minimum of 10 hours of classes per week.

Course Lists From Previous Semesters:

Refer to the available course lists from previous semesters for examples of courses offered for each track/campus.

*Please note that course offerings vary by semester.



Next Page

Track Outline & Other Available Courses

Track Outline

Track	IJL Intensive Japanese Language	RCJ Regular Courses in Japanese	RCE Regular Courses in English
Study Period	Half year (1 semester) or Full year (2 semesters)		
Class Language	Japanese (primarily)	Japanese	English
Academic Requirements	The standard required GPA is 3.0 on a 4.0 scale ("B average") or equivalent. Exchange students from partner institutions must meet the academic requirements outlined in the student exchange agreement.		
Admission Requirements	Applicants must meet both a) and b): a) Must be a student at a partner university that has an active exchange agreement with Ritsumeikan University and must be officially nominated by their home institution b) Must be currently enrolled in an undergraduate or graduate program at their home institution and must have successfully completed at least one full academic year of undergraduate study prior to the start of the exchange period		
Language Requirements	Students who have never studied Japanese before must be able to conduct basic communication in English*	JLPT (Japanese Language Proficiency Test) N1 or equivalent EJU (Examination for Japanese University Admission for International Students) score	Native English speaker, or have a minimum English proficiency test score of TOEFL® iBT 68/ PBT 520, CEFR B2, or IELTS 6.0 (or equivalent)
Japanese Language Courses	✓	✓	✓**
* Non-native English speakers that wish to take courses in English must have a minimum English proficiency test score of TOEFL® iBT 68/ PBT 520, CEFR B2, or IELTS 6.0 (or equivalent)			** Kinugasa Campus: Optional Japanese language courses (introductory level; one semester only) ** Osaka Ibaraki Campus: Optional Japanese language course (elementary level to upper advanced level) ** Biwako-Kusatsu Campus: No Japanese language courses available

Program Fee & Scholarships

	One Semester	Two Semesters
Tuition	415,100 yen	830,200 yen

The tuition fee is waived for exchange students participating under an Agreement for Student Exchange with an RU partner university (Students attending as self-sponsored students are excluded). In addition to the tuition fee, other costs and administrative fees may apply. Please refer to the application guidelines for the program you intend to apply for to confirm the details of these additional charges. All students must cover living expenses that are not included in the Tuition Fee.

Scholarships	JASSO	RUSSES	*These scholarships are very competitive. Details on scholarship eligibility and application procedures can be found on the Program Fee and Scholarships page. *The RUSSES Scholarship Scheme may conclude at the end of 2026 Fall semester.
Monthly Stipend	80,000 yen	40,000 yen	
Eligibility	Exchange Students Only (students participating under an Agreement for Student Exchange with RU)	All Students	

Other Available Courses

CSC Campus-Specific Courses



Students will learn about Japanese traditional culture, history, society, etc., through hands-on learning given by experts in each field.



In (these)...courses, we have the chance to... appreciate and understand... Japanese traditional culture.
- Ilaria Canali, Italy

- All CSC are taught primarily in Japanese, but Japanese language abilities are not required.
- Students that register for these courses must pay a mandatory activity fee for materials, etc. (varies by course)
- CSC are available for all tracks of study.



Our Campuses

Ritsumeikan University has more than 34,000 students, faculty, and staff who contribute to the diversity of the learning environment. Here are the three campuses where SKP students take courses.



Kansai Region

Tokyo



Kinugasa Campus (KIC) is the perfect example of Kyoto's harmonization between the traditional and the modern, and is a serene environment for education. Kinugasa is the university's center of liberal arts, social science and humanities studies.



*Tracks Offered: IJL, RCJ, RCE



Located midway between Osaka City and Kyoto City, Osaka Ibaraki Campus (OIC) is RU's newest campus. The campus community works to facilitate collaboration with industry and government institutions and promote Ritsumeikan's activities on the frontline of social collaboration.



*Tracks Offered: RCJ, RCE



Biwako-Kusatsu Campus (BKC) serves as a center of education and research that integrates the sciences with the humanities. The campus is surrounded by natural beauty with mountains to the west and Lake Biwa, Japan's largest lake, to the east.



*Tracks Offered: RCJ, RCE