

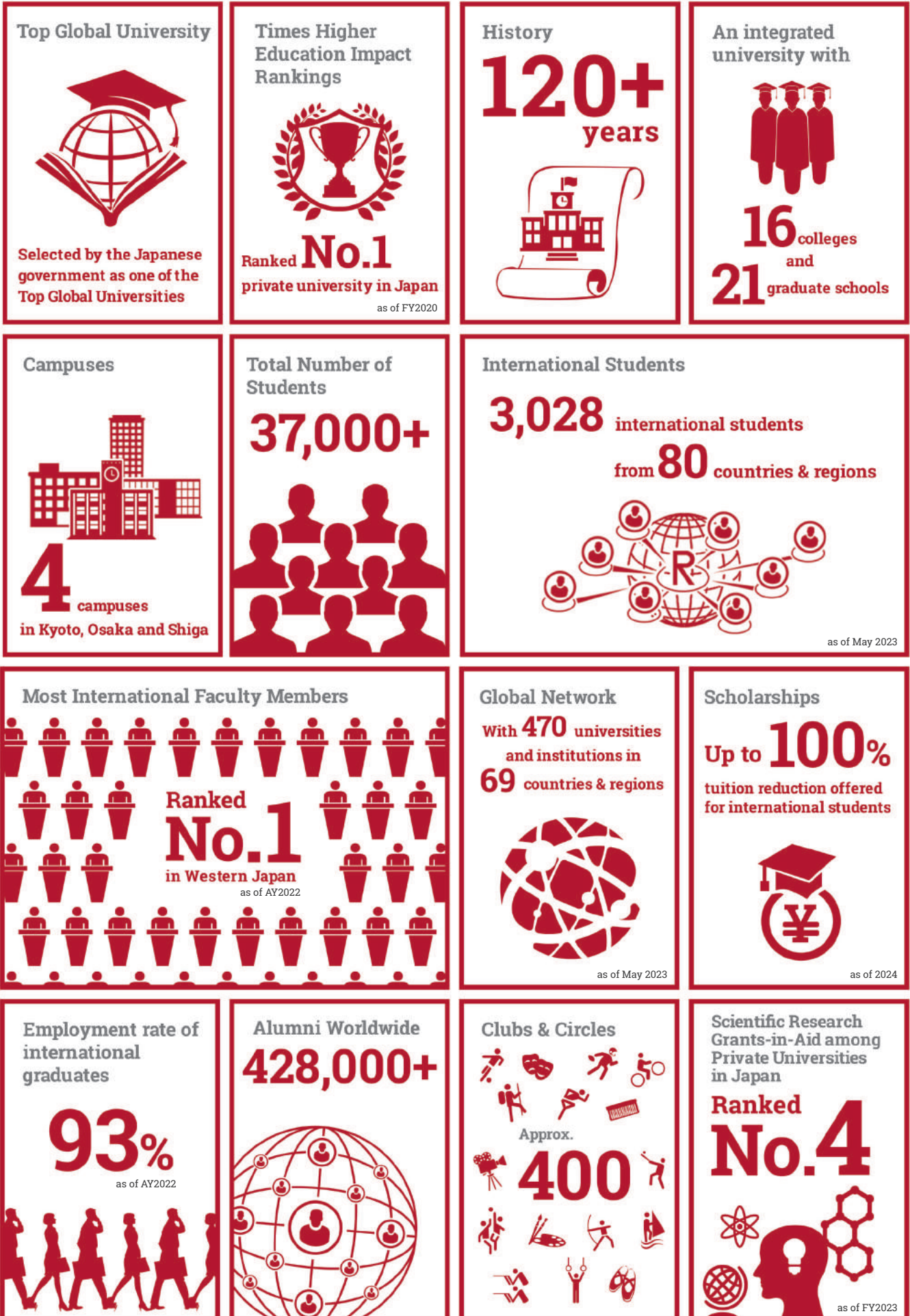
A large, bold, white capital letter 'R' is centered on the page. The background is a dark red color with a repeating pattern of lighter red, stylized, interlocking shapes that resemble traditional Japanese architectural motifs or a scale-like pattern.

RITSUMEIKAN  
UNIVERSITY

English-medium Undergraduate Programs  
Admissions in 2025

Kyoto, Osaka JAPAN

# Why Choose Ritsumeikan?



# English-medium Undergraduate Programs (4-year full time)

Programs	Degree Offered	Location	Enrollment	Yearly Intake*	
Dual /Joint Degrees					
<b>GLA</b>	College of Global Liberal Arts <b>Dual degree program with The Australian National University</b>	Bachelor of Global Liberal Arts + Bachelor of Asia-Pacific Affairs	Osaka + Canberra	April September	100**
<b>JDP</b>	College of International Relations <b>American University-Ritsumeikan University Joint Degree Program</b>	Bachelor of Arts in Global International Relations	Kyoto + Washington, D.C.	April	25***
Single Degrees					
<b>GS</b>	College of International Relations <b>Global Studies Major</b>	Bachelor of Arts in International Relations	Kyoto	April September	100
<b>CRPS</b>	College of Policy Science <b>Community and Regional Policy Studies Major</b>	Bachelor of Arts in Policy Science	Osaka	September	40
<b>ISSE</b>	College of Information Science and Engineering <b>Information Systems Science and Engineering Course</b>	Bachelor of Engineering	Osaka	April	50

\*Subject to change. Includes all admissions methods. Consult each Application Handbook for details.

\*\*The intake includes 10 students enrolling into ANU.

\*\*\*The intake includes 5 students enrolling into AU.

**KYOTO** | Kinugasa Campus



**OSAKA** | Osaka Ibaraki Campus





# Life at Ritsumeikan

## Housing for International Students

- Accommodation in a furnished apartment
- Student dormitory

### Housing Options

Off-campus apartments and student dormitories are available for international students.

Kyoto - International House (Taishogun, Tokiwa, Utano)

Osaka - OIC International House

- OIC Global House (On-campus, available to international and Japanese students in the College of Global Liberal Arts)

Learn More



[en.ritsumei.ac.jp/e-ug/student\\_life/](http://en.ritsumei.ac.jp/e-ug/student_life/)



## Academic Calendar

March	New Student Orientation (April Enrollment)
April	Start of Spring Semester
	Entrance Ceremony (April Enrollment)
July	End of Spring Semester
	Final Exams (Spring Semester)
August	Summer Break
September	Start of Fall Semester
	New Student Orientation (September Enrollment)
	Entrance Ceremony (September Enrollment)
November	Ritsumeikan Festival
December	Winter Break
January	End of Fall Semester
	Final Exams (Fall Semester)
February	Spring Break



## Beyond Borders Plaza

Global Commons Focused on International Exchange and Language Learning

Learn More



[www.ritsumei.ac.jp/bbp/](http://www.ritsumei.ac.jp/bbp/)

## Study Abroad Opportunities

Exchange partners with:

King's College London

National University of Singapore

Peking University

The University of British Columbia

The University of Hong Kong

The University of Melbourne

Yonsei University

And many more...

# 166

Partner Institutions in

# 34

countries

As of May 2023

Students have a wide range of opportunities to explore the world through study abroad programs. Ritsumeikan University provides students with an array of programs, ranging from short-term, to 1-semester or 1-year exchanges, to meet their study needs.

## Student Services

- Career Planning
- Academic Guidance
- Visa Application
- Housing and Accommodation Support
- Study Abroad Support
- On-Campus Medical Support

Each college also offers students guidance and support from higher-year students through Orientation Coordinators (Oritors).

Students are encouraged to engage in the hundreds of student sport and cultural organizations and clubs.

Learn More



[en.ritsumei.ac.jp/lifecareer/](http://en.ritsumei.ac.jp/lifecareer/)



Visit [ip.ritsumei.ac.jp/en/students\\_voice](http://ip.ritsumei.ac.jp/en/students_voice) to read more Student Voices



01



Reaching my final semester at Ritsumeikan University, I've loved the journey, especially being part of its diverse community and the unique dual degree program with The Australian National University. The professors are incredibly supportive, encouraging me to present my thesis at an international conference as an undergraduate researcher. Ritsumeikan University isn't just about academic growth; it's about preparing to thrive in a global landscape that's more connected than ever.

Clara  
Indonesia, College of Global Liberal Arts

02



I chose Ritsumeikan University because I like the academic atmosphere and the free environment in RU. Ritsumeikan is a very global university in Japan, which provides many opportunities, whether academic exchanges with other universities or employment assistance, which were very attractive to me. In addition, the ISSE Course offers excellent professional education and a high degree of compatibility for the future market. It has an international perspective, and I can communicate and learn with people from different cultural backgrounds.

Ruihao (Ben)  
China, Information Systems Science and Engineering Course

03



As the course is about Policy Science, we learn a lot about problems around the world, our different perspectives as students from different countries, and which kinds of policies should be applied to solve them. I am also a member of the Kansai Wall Street Dance Club (277 members), with students from not only the Osaka Ibaraki Campus, but also other campuses and universities.

Tran Khanh Linh  
Vietnam, Community and Regional Policy Studies Major

04



JDP students learn about Japan's perspectives over the world at Ritsumeikan. At American University, they can experience hot issues on world politics in D.C. After finishing my first semester at AU, I was a little worried about upper level courses coming up in the next semester, but I was determined to continue my hard work. Both colleges (AU and RU) are definitely challenging, but it will help us in the future if we successfully complete the courses.

Brencis  
South Korea, College of International Relations AU - RU Joint Degree Program



[www.ritsumei.ac.jp/ir/eng/jdp/newslst2018/detail/?news\\_id=67](http://www.ritsumei.ac.jp/ir/eng/jdp/newslst2018/detail/?news_id=67)

# Dual degree program with The Australian National University

College of  
Global Liberal  
Arts [GLA]

## Bachelor of Global Liberal Arts (RU) & Bachelor of Asia-Pacific Affairs (ANU)

The College of Global Liberal Arts (GLA) is the first in Japan to provide a college-wide dual degree program in collaboration with The Australian National University (ANU).

### PROGRAM DESIGN

GLA has partnered with the ANU College of Asia and the Pacific (CAP) to offer a dual degree program. All students enrolled in this program will have the opportunity to graduate with two degrees—a Bachelor of Global Liberal Arts from RU, and a Bachelor of Asia-Pacific Affairs from ANU. GLA offers a liberal arts program with a wide variety of course choices for students to explore, including Business, Economics, History, Information Science, International Relations, Management, Philosophy, Politics, Psychology, Sociology, Anthropology, Biology, Literature, Physics, Theology, and Journalism. At ANU, students will experience the dynamism of globalization firsthand and deepen their studies of the Asia-Pacific region. GLA also offers Japanese language courses for students to obtain high levels of Japanese proficiency by the time they graduate, as well as individualized career support to assist them to achieve their professional and academic goals. Let us help you make your dream a reality.



Australian  
National  
University



RITSUMEIKAN  
UNIVERSITY

### Learning Schedule

	1 <sup>st</sup> year		2 <sup>nd</sup> year		3 <sup>rd</sup> year		4 <sup>th</sup> year	
April Enrollment	Spring 1	Fall 2	Spring 3	Fall 4	Spring 5	Fall 6	Spring 7	Fall 8
	RU Courses		RU+ANU Courses	ANU Courses		RU+ANU Courses		
September Enrollment	Fall 1	Spring 2	Fall 3	Spring 4	Fall 5	Spring 6	Fall 7	Spring 8
	RU Courses		RU+ANU Courses		ANU Courses		RU+ANU Courses	

at RU ■ at ANU ■

Learn  
More



How to  
Apply



### Subject Groups and Course Examples

GLA [RU]	Foundation Courses	College Writing, Critical Thinking, Foundations in Research Skills
	Introductory Courses	Introduction to Philosophy, Introduction to Historical Sociology, Introduction to Algorithms and Programming
	Intermediate Courses	Japanese Philosophy, Global Historical Sociology, Applied Data Curation
	Advanced Courses	Research Seminar and Thesis
	Electives	Special Lectures, Japanese Language Course, Career Design
CAP [ANU]	Politics and Government	The Politics of China, Indonesia: Politics, Society, and Development
	International Relations and Security	(In)Stability on the Korean Peninsula, Politics of Nuclear Weapons
	Conflict and Peace-building	Gender and Cultural Studies in Asia and the Pacific, Peace and Conflict Studies
	History and Cultural Identity	Asian Economies, Islam in Southeast Asia

## Why GLA?

1

### World-Class Education that Supports Carving out Future Careers

Be a part of a world-class education and learn from some of the best academics in the Asia-Pacific region. Graduate with two bachelor's degrees from leading universities in Australia and Japan. The exciting experience of learning in both environments will expand students' possibilities and help them carve out future careers.

2

### 3 Years at RU in Japan + 1 Year at ANU in Australia

Students will commence their studies at RU in Osaka, then embark on a year-long experience at ANU in Canberra, immersing themselves in university life in both Japan and Australia. This unique opportunity expands cultural horizons and builds an extensive network while delving into the interdisciplinary studies of Global Liberal Arts and Asia-Pacific Affairs. Upon their return to Japan, students seamlessly integrate ANU courses into their curriculum, ensuring the continuation of their academic journey.

3

### Liberal Arts Education to Nurture Global Citizens

GLA provides students with a flexible yet rigorous interdisciplinary education through systematic exposure to fundamental knowledge from diverse disciplines. Upon successful completion of the program, students will be trained to apply their acquired knowledge for social development and problem-solving.

4

### Truly International Learning Environment

This program effectively engages students in active learning in small classes of 25 students or fewer. Outside of the classroom, both domestic and international students live in an on-campus dormitory newly built for GLA students. This interactive and international learning environment helps students develop cross-cultural communication skills.

# American University - Ritsumeikan University Joint Degree Program [JDP]

College of  
International  
Relations

## Bachelor of Arts in Global International Relations

This program was launched in 2018, the 30th anniversary year of the establishment of the College of International Relations. This course is the first joint undergraduate degree program between Japan and the United States.

### PROGRAM DESIGN

Joint degree programs are collaborative degrees offered by two different universities with educational and student support systems designed to develop graduates whose skills and knowledge are in demand. This exciting program offers students a chance to fully immerse themselves in the cultures and learning environments of Japan and the US. Students at both Ritsumeikan University (RU) and American University (AU) will form a cohort within and across academic years, enabling them to learn about each other's cultures and develop their cross cultural communication skills in an interactive learning environment.



AMERICAN UNIVERSITY  
WASHINGTON, D.C.

RITSUMEIKAN  
UNIVERSITY



### Learning Schedule

Ritsumeikan University HOME	1 <sup>st</sup> year		2 <sup>nd</sup> year		3 <sup>rd</sup> year		4 <sup>th</sup> year	
	Spring 1	Fall 2	Spring 3	Fall 4	Spring 5	Fall 6	Spring 7	Fall 8
	RU	RU	RU	AU	AU	AU	AU	RU

at RU ■ at AU ■

Learn  
More



How to  
Apply



### Curriculum

Course Category Core Courses, Foundation Courses, Research Methodology, Foreign Language Courses, Thematic Areas, Regional Focus, Senior Capstone, Elective

Thematic Areas In order to learn specialized topics within Global IR systematically, students will choose their primary and secondary areas of focus from:  
Global and Comparative Governance (GCG)  
Identity, Race, Gender and Culture (IRGC)  
Peace, Global Security and Conflict Resolution (PGSCR)

## Why JDP?

1

### Joint Degree from Leading IR Facilities in the US and Japan

The College of International Relations (RU) is recognized as one of the top institutions in Japan in the field of international relations. The School of International Service (AU) is a top-10 school of international affairs in the US. On completion, students will be jointly conferred a Bachelor of Arts degree in Global International Relations from RU and AU.

2

### 2 Years in Kyoto and 2 Years in Washington, D.C.

Kyoto, the ancient capital of Japan and home to 17 UNESCO World Heritage Sites, is a famous international city that attracts visitors from all over the world. Washington, D.C., the center of international politics, is an ideal place to study international relations. Students will have first-hand experiences through active learning in these two cities, exchanging ideas with students coming from all over the world.

3

### Jointly Designed Curriculum

The curriculum is designed jointly by RU and AU. Students will study in a coherent academic curriculum in English which enables them to earn a joint degree from a Japanese and a US institution. This is the first program of its kind in Japan. Students will acquire a degree that is unique, distinctive, and highly desirable.

4

### Career Opportunities

RU and AU offer joint career advice to all JDP students. Alumni of the College of International Relations have found employment in a wide variety of world-renowned companies and institutions, including trading and manufacturing companies, major airlines, embassies, and governments. Many have pursued further studies at graduate schools like University of Oxford, the London School of Economics and Political Science, the University of British Columbia, and the University of Tokyo.

## Bachelor of Arts in International Relations

The College of International Relations was established in 1988. With more than 30 years of history, the Global Studies Major (GS) started its innovative challenge in 2011. GS offers English curriculums and welcomes students from overseas which add value to our unique and diverse learning environment.

### PROGRAM DESIGN

The program is designed to be flexible, with students able to design their learning programs based on their interests and career goals. In the first year, students take a range of introductory and academic skills courses, which develop a foundation for their studies. From the second year, students start their study of core and area studies courses from the list detailed below. Second year students also take part in the hands-on Global Simulation Gaming, a class taken together with Japanese-based students. They continue to deepen their studies in the third year, particularly through the research focused Advanced Seminar, before writing their graduation thesis in their fourth year.



### Cluster Courses

Governance and Peace cluster	International Law, Peace and Conflict Studies, Security Studies, International Human Rights, International Organizations, Global Political Economy, Comparative and Global Governance
Development and Sustainability cluster	Global Environmental Issues, Development Studies, Microeconomics, International Finance, International Trade and Investment, Global Civil Society and Development
Culture and Society cluster	Cultural Awareness and Communication, Media and Society, Topics in Identity, International Migration, Race and Ethnicity and Modern World, Global Sociology

Learn  
More



How to  
Apply



### Area Studies Courses

Japanese Politics, Japanese Society, Japanese Culture, Japanese Economy, Japan-United States Relations, Special Lecture (Area Studies Courses), Modern Japanese History, Introduction to Area Studies, Advanced Topics in Area Studies, Foreign Relations of Japan, Business Administration in Japan, Korean Studies, Contemporary China, United States Politics and Foreign Policy, Southeast Asian Studies

## Why GS?

# 1

### One of Japan's Leading International Relations Faculties

The Graduate School of IR is the only full Japanese member of APSIA (Association of Professional Schools of International Affairs). APSIA includes highly advanced universities in 10 countries, such as Harvard University, Yale University, National University of Singapore, and others.

# 2

### Faculty and Student Diversity

We have faculty members from various countries and regions such as Asia, North America, and Europe. In addition, several professors have experience working at the UNHCR, the World Bank, as international journalists, and in a range of other international careers providing guidance to students from approximately 30 countries around the world.

# 3

### Japanese Language Studies and Cross-Enrollment between the English-medium and the Japanese-medium Majors

International students take 6 credits of Japanese language courses in the first year and can take further Japanese courses in the following years. GS students with a high level of Japanese language proficiency can take Japanese IR courses.

# 4

### Career Opportunities

Graduates have found success in many careers with positions as diplomats, NGO employees, and media professionals, and are also employed in international business fields. GS alumni often pursue further study to deepen their knowledge at the Graduate School of IR in addition to other renowned schools, such as University of Oxford, Johns Hopkins University, the London School of Economics and Political Science, and the University of British Columbia.



# Community and Regional Policy Studies Major [CRPS]

College of  
Policy  
Science

## Bachelor of Arts in Policy Science

Since its launch in 1994, the College of Policy Science has grown considerably and it is now a representative of Japan's research in this academic field. The Community and Regional Policy Studies Major started in September 2013.

### PROGRAM DESIGN

In the first and second year, students acquire academic and critical thinking skills, as well as basic knowledge needed to study in the core discipline areas of our program. Several of our courses involve field research with our flagship On-site Research Project program offering exciting opportunities for research collaboration with other students either in Japan or abroad. As students progress through the program, they continually focus on their studies, gaining more in-depth knowledge and advanced thinking skills in order to prepare for their advanced Policy Seminar and Case Study Seminar courses in their third and fourth year in which students produce a final graduation thesis based on their original research.



## Core Programs

Sustainable Urban Policy	Urban Planning for Sustainable Cities, Community Safety, Housing and Policy, Disaster Mitigation, Systems Analysis, Environmental Education, Nature Conservation
Regional Economy and Development	Development Economics, Regional Development, Economic Institutions, Public Economics, International Trade and Finance
Multi-level Governance	Inter-Government Relations and Cooperation, Global Public Policies, Public Management, Constitutional Law, Social Welfare Policies

Learn  
More



How to  
Apply



## Why CRPS?

# 1

### Faculty Members from a Variety of Backgrounds

We have faculty members who specialize in natural sciences as well as social scientists. The diversity of teaching staff allows students to not only learn specialized knowledge in various fields, but also how to analyze issues from a variety of perspectives. Small classes enable students to receive detailed instruction from the faculty members.

# 2

### Practical Experience Conducting Social Surveys and Fieldwork

There are many opportunities in our program to do active field research either in Japan or also abroad. We place great emphasis on practical training, for example in carrying out social surveys and field research. Student-centered classes encourage active participation, lively discussions and dynamic presentations.

# 3

### Instruction in Research Methods

A prime feature of our program is our focus on building research methods—statistical analysis, as well as quantitative and qualitative research skills. We believe these skills are critical for analyzing policies and practices and to be able to develop effective policy solutions to issues.

# 4

### Intensive Japanese Language Studies and Exchange with Japanese Students

We offer Japanese language instruction for beginners up to advanced level. Learning Japanese will give students greater opportunities to: study policy science subjects in Japanese, participate in field research in Japan, join extracurricular activities, do an internship, and perhaps get a part-time job. Learning Japanese to an advanced level could potentially lead to a career within Japan.

# Information Systems Science and Engineering Course [ISSE]

College of Information Science and Engineering

## Bachelor of Engineering

The College of Information Science and Engineering was established in 2004. It is the largest ICT college in Japan that provides education in the main academic fields of computer science.

### PROGRAM DESIGN

Students in the Information Systems Science and Engineering Course develop the information systems engineering skills necessary to work anywhere in the world and bring imagination and technical competence to every kind of project and organization, while also maintaining the powerful benefits of their own unique personalities and cultures. The program lays a foundation in the basics of engineering and the technical competency to work flexibly with continually evolving hardware, software, and user needs.



### Class Examples

Interactive Systems	Human Interface, Systems Ergonomics
Systems Engineering	Computer Architecture, Databases, Operating Systems, Computer Networks, Computer Security
Graphics and Visualization	Computer Graphics, Image Processing, Data Visualization
Distributed and Embedded Systems	Network Systems, Distributed Systems, Introduction to Robotic Systems, Imperative Programming, Web Information Engineering

### Laboratories

Visual Information Engineering Laboratory
e-Society Laboratory
Affective Engineering and Computer Arts Laboratory
Intelligent Robotic Systems Laboratory
Advanced Computer Graphics and Digital Human Laboratory
Digital Governance Systems Laboratory

Learn More



How to Apply



## Why ISSE?

# 1

### Practice-Oriented

The Information Systems Science and Engineering Course is project-based learning at its best - offering practical, hands-on engineering experience to match the demands of industry leaders in Japan and worldwide. This practice-oriented education is centered around project work throughout the program.

# 2

### Customizable Education

The Course offers flexible study plans to complement and foster individual abilities in the best possible way. A combination of fundamental classic science courses and interdisciplinary engineering practice disciplines allows students to learn both for and from doing. The learning environment as a whole is designed to develop distinctive talents, embracing diverse personalities who will work together to innovate the future world.

# 3

### Project-Based Learning

Students join engineering projects from their first year of study while education is centered around project work throughout the program. During the first two years, students learn various processes of the engineering product life cycle and teamwork. During the third year, they are ready to launch their own projects that will lead into graduation theses.

# 4

### Global Opportunities

A range of extracurricular programs and internships provides students with opportunities to test themselves in the larger world through academic mobility and interactions with top-level researchers. Graduation launches students into a new world where they can continue to work as researchers, product and system developers, international project managers, entrepreneurs, and more.

# Tuition and Financial Aid

Tuition and Fees (2024 Enrollees)					
Program	Admission Fee	Annual Tuition Fee			
Dual /Joint Degrees					
College of Global Liberal Arts <b>Dual degree program with The Australian National University</b>	<b>200,000 JPY</b> (Approx. 1,351 USD)	<b>2,300,000 JPY</b> (Approx. 15,541 USD)			
College of International Relations <b>American University-Ritsumeikan University Joint Degree Program</b>		<table border="1"> <thead> <tr> <th>Study at RU</th> <th>Study at AU</th> </tr> </thead> <tbody> <tr> <td><b>1,359,400 JPY</b> (Approx. 9,185 USD)</td> <td><b>55,724 USD*</b> (12-17.5 Credit hours)</td> </tr> </tbody> </table>	Study at RU	Study at AU	<b>1,359,400 JPY</b> (Approx. 9,185 USD)
Study at RU	Study at AU				
<b>1,359,400 JPY</b> (Approx. 9,185 USD)	<b>55,724 USD*</b> (12-17.5 Credit hours)				
Single Degrees					
College of International Relations <b>Global Studies Major</b>	<b>200,000 JPY</b> (Approx. 1,351 USD)	<b>1,359,400 JPY</b> (Approx. 9,185 USD)			
College of Policy Science <b>Community and Regional Policy Studies Major</b>		<b>1,258,000 JPY</b> (Approx. 8,500 USD)			
College of Information Science and Engineering <b>Information Systems Science and Engineering Course</b>		<b>1,672,600 JPY</b> (Approx. 11,301 USD)			

\*Tuition may change from AY2024 onwards.

## Scholarships and Stipends

### Tuition Reduction Scheme

International students (who hold the visa status of residence of [Student] while studying at RU) are awarded at least a 20% reduction, with 50% and 100% reduction offered to the most outstanding applicants.

- The amount of reduction will be notified with admission results.
- The RU Tuition Reduction Scheme is offered initially for one year, based on students' admission evaluation. For the 2nd and subsequent years, the tuition reduction will be awarded based on students' grades during the previous year of study.

\*The RU Tuition Reduction Scheme will be revised for 2026 onwards.

### Post-Admissions Scholarships Available to International Students

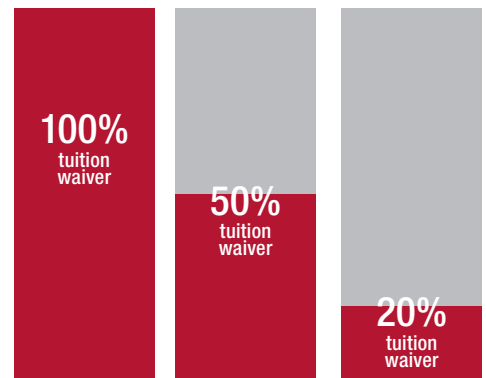
There are a variety of scholarships that students can apply for after the admissions process. Students are encouraged to research other scholarships and their details.

#### Examples of scholarships available as of 2023

- JASSO Scholarship: 48,000 JPY (324 USD) per month
- International Students Assistance Scholarship by RU Faculty/staff: 250,000 JPY (1,689 USD) per year.

For other scholarships available throughout your study, please consult our Scholarships page.

[en.ritsumei.ac.jp/current-students/financial-aid/](http://en.ritsumei.ac.jp/current-students/financial-aid/)



[en.ritsumei.ac.jp/e-ug/financial\\_info/scholarships.html/](http://en.ritsumei.ac.jp/e-ug/financial_info/scholarships.html/)

## Program Specific Scholarships and Stipends for Dual/Joint Degree Programs

### For GLA Students

1. RU Study Abroad Challenge Scholarship\*

- 300,000 JPY for the 1 year period at ANU

2. College of Global Liberal Arts Scholarship for Study Abroad\*

- 700,000 JPY for the 1 year period at ANU

\*Although students can receive both 1 and 2, students may not combine these with other scholarships specified in university policies.

### For JDP Students

RU Study Abroad Challenge Scholarship

- 1,000,000 JPY per year for the 2 year period at AU
- Awarded to students who meet the eligibility requirements

The above information is accurate at the time of publication and subject to change.

Visit [en.ritsumei.ac.jp/e-ug/financial\\_info/scholarships.html/](http://en.ritsumei.ac.jp/e-ug/financial_info/scholarships.html/) for details and the latest information.

## Monthly Living Costs Among Ritsumeikan University Students

University Accomodations	34,000-60,000 JPY (230-405 USD)
Food	25,400-29,900 JPY (172-202 USD)
Books & Supplies	1,200-2,700 JPY (8-18 USD)
Transportation	5,300-5,800 JPY (36-39 USD)
Entertainment	14,000-19,200 JPY (95-130 USD)
Telecommunication	3,300-3,800 JPY (22-26 USD)
Miscellaneous Expenses	1,700-4,200 JPY (11-28 USD)
<b>TOTAL</b>	<b>84,900-125,600 JPY (574-849 USD)</b>

\*Based on "FY2023 Student Life Survey Report" by Ritsumeikan Co-op.

\*Living costs vary depending on student lifestyle.

\*Amounts in USD are for reference only.  
(1 USD = 148 JPY, as of Dec. 2023)



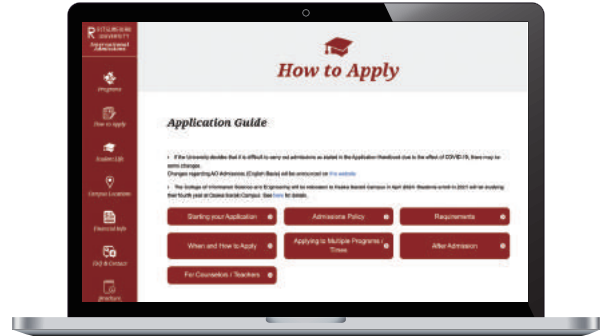
## Locations

[en.ritsumei.ac.jp/e-ug/why\\_rueug/great\\_locations.html/](http://en.ritsumei.ac.jp/e-ug/why_rueug/great_locations.html/)



## How to Apply

[en.ritsumei.ac.jp/e-ug/apply/howto.html/](http://en.ritsumei.ac.jp/e-ug/apply/howto.html/)



1. Download and Consult Application Handbook



2. Create your Online Application System Account



3. Upload Documents



4. Pay Application Fee

\*Please visit our website for details.



## Any Questions?

[en.ritsumei.ac.jp/e-ug/faq\\_contact/](http://en.ritsumei.ac.jp/e-ug/faq_contact/)

Connect with Us



ritsumei



@ritsumeikaniao

## For more information

International Admissions Official Website  
[en.ritsumei.ac.jp/e-ug/](http://en.ritsumei.ac.jp/e-ug/)



**R** RITSUMEIKAN  
UNIVERSITY

International Admissions Office

Office Hours: 9:00am-5:30pm(JST) Monday to Friday

E-mail: [hello@st.ritsumei.ac.jp](mailto:hello@st.ritsumei.ac.jp)

Publication Version [March, 2024]

Information in this document is correct and valid as of publication date.

Interviews and opinions expressed are each individual's and separate of Ritsumeikan University.

Students' degree major, portrait and report on all pages are correct as of date when interviewed.

Visit the International Admissions Office website for the latest information.