




**Australian National University**  
 College of Asia and the Pacific (CAP)  
 Bachelor of Asia-Pacific Affairs


**RITSUMEIKAN UNIVERSITY**  
 College of Global Liberal Arts (GLA)  
 Bachelor of Global Liberal Arts

Department		College of Global Liberal Arts
Degree		RU : Bachelor of Global Liberal Arts ANU : Bachelor of Asia-Pacific Affairs
Enrollment Period		April / September
Location	April Enrollment	Semester 1, 2, 3, 6, 7, 8 : RU, Osaka Ibaraki Campus Semester 4, 5* : ANU, Acton Campus (Canberra, Australia)
	September Enrollment	Semester 1, 2, 3, 4, 7, 8 : RU, Osaka Ibaraki Campus Semester 5, 6* : ANU, Acton Campus (Canberra, Australia)
Duration		4 Years
Annual Student Intake		100 The intake includes 10 students enrolling into ANU

## Information

GLA Website  
[en.ritsumei.ac.jp/gla](http://en.ritsumei.ac.jp/gla)



RU International Admissions Website  
 Latest information on Admissions and Events  
[en.ritsumei.ac.jp/e-ug/](http://en.ritsumei.ac.jp/e-ug/)



 Ritsumeikan University International Admissions  
 GLA Ritsumeikan University

## CONTACT

**College of Global Liberal Arts, Ritsumeikan University**  
 2-150 Iwakura-cho, Ibaraki-shi, Osaka 567-8570 JAPAN / Email: [glapost@st.ritsumei.ac.jp](mailto:glapost@st.ritsumei.ac.jp) / Tel: +81 72 665 2492

• Publication Version [September, 2022] The content of this booklet is accurate at the time of publication. Please check the GLA website for updates.  
 • The information in this booklet is for students applying to enter the College of Global Liberal Arts, Ritsumeikan University.

Study in Japan and Australia

## College of Global Liberal Arts


**Australian National University**


**RITSUMEIKAN UNIVERSITY**

2023





# That's why GLA

## A multi-faceted education in a multi-cultural background

**Isobel Florice Maretza Fincher**

Second-year Student

Attended West Buckland School, U.K.

### Why I chose GLA

When looking at universities, I really struggled to find one that I thought would cover all my interests. In my home country of the U.K., it was difficult to find a course that allowed for a varied programme featuring mostly humanity-based subjects, but with options such as psychology and Japanese.

Unusually, GLA offered a course that allows for a multi-faceted education in a multi-cultural background in Japan, a country that I have come to love. The location is also excellent, as the Osaka Ibaraki Campus offers a peaceful environment that is nevertheless conveniently located halfway between Kyoto and Osaka rail stations. One big concern for international students is finance, but Ritsumeikan and GLA both offer very generous scholarship opportunities. Those are the reasons why I decided to apply to GLA and I was very happy when I got the acceptance letter!

### The best things about studying at GLA

The relationship between the students and the professors is the most appealing aspect of learning at GLA. As the teaching staff and the student body are both small, you get to know the lecturers a lot better and you receive more direct feedback on assignments and essays. Despite the small size of the student body, GLA is an incredibly diverse community, and because everyone is so open-minded and accommodating, there was no difficulty in making friends even when we were kept apart by the COVID-19 pandemic.

### Message to prospective students

Don't worry if you arrive at university not knowing what you want to do or who you need to be: There is often pressure to decide your career path immediately after high school, but you will likely finish university with a completely new career in mind. Moving away from home is also a challenge, but the experience is definitely worth sacrificing familiarity for. I look forward to finally meeting you all on campus!



# GLA — the perfect place to explore your options

**Seojin Park**

Third-year Student

Attended Michuhol Foreign Language High School, Korea

### Why I chose GLA

During my time in high school, I realized I wanted to explore the world more and study beyond what was typically expected of a Korean student, but it was difficult to find a university that satisfied me. GLA turned out to be the only college that fulfilled my criteria. Firstly, GLA is one of the very few places in Japan that offers a dual degree program. Secondly, it provides a rare opportunity to study at ANU, which is one of the most prestigious universities in the world. As my field of interest is international relations, being able to study at both Ritsumeikan and ANU was a huge merit for me. Thirdly, the internationality within GLA provides a unique space for not only domestic students, but also us international students. Fourthly, the GLA curriculum offers a wide variety of courses, from history and politics to business, design, and computer programming. That means you are free to pursue your own interests and goals by selecting from the great variety of subjects within the GLA curriculum. In short, GLA provides an experience that is not available at any other university in Japan.

### The best things about studying at GLA

Thanks to the variety of courses and excellent teaching staff of both Ritsumeikan and ANU, you will be able to learn a great deal and enhance your skill set. You will also be able to broaden your perspective as you study with staff and students from many different international backgrounds. What is really good about studying at GLA is that you get to study in small-sized classes. That means you can ask more questions and participate more actively in the class. Moreover, GLA adopts a one-lecture, one-tutorial system for all courses, which really supports two-way communication with teachers and classmates. GLA is the perfect place for students who seek more than just a series of lectures.

### Message to prospective students

A university is about exploring what you want to do in the future and GLA is the perfect place to discover your options if you do not have a clear career path. As long as you put in the effort, you will reap a reward in the end. The GLA community is waiting to welcome you, so I wish you all the best of luck!



# Graduate with 2 degrees from 2 universities



**History**  
**120+**  
**Years**

## Ritsumeikan University

Ritsumeikan University is a leading comprehensive private university in west Japan with over 120 years of history. It was selected to lead the globalization of Japanese higher education as part of the "Top Global University Project" funded by the Japanese government. Today, around 36,000 students are studying and conducting research on its four campuses in Kyoto, Shiga, and Osaka. Ritsumeikan University is pioneering new programs utilizing Japan's well-developed education with their English-medium Bachelor Programs.



**Global Network**  
**463 Universities and Institutions in 68 Countries and Regions**

## College of Global Liberal Arts

The College of Global Liberal Arts (GLA) was inaugurated in April 2019 at the Osaka Ibaraki Campus. Under the partnership with the College of Asia and the Pacific at the prestigious Australian National University (ANU), all GLA students pursue a four-year dual degree program leading to degree qualifications from both Ritsumeikan and ANU. The Ritsumeikan component provides thorough training in the liberal arts based on small-group discussion and is aimed at promoting social progress through the application of wide-ranging knowledge of the arts and sciences. GLA provides maximum global career support to students from a diverse range of international backgrounds.



## The Australian National University

Founded in 1946, ANU is Australia's national university and is a research-centered institution focused on finding solutions to global problems. Occupying a high position in a range of university ranking systems, it is equally renowned for its outstanding alumni, who include Australian prime ministers and Nobel Prize winners. The university's campus is centrally located in the Australian capital city of Canberra, and enjoys a parkland setting of great natural beauty where approximately 7,400 overseas students (as of 2020) pursue research activity.



## College of Asia and the Pacific

GLA's partner, the College of Asia and the Pacific has one of the world's largest concentration of English-speaking researchers specializing in the Asia-Pacific region. It plays an important role not only as a source of expertise on Australia's domestic public policy, but also as a knowledge base for the societies, cultures, and economies of the Asia-Pacific region. Meanwhile, the Coral Bell School of Asia Pacific Affairs (Bell School for short), in which students from GLA are enrolled, is a world-leader in Asia-Pacific and international politics, society, strategy, security, and diplomacy.



**#1**  
**in Australia**  
\*QS World University Ranking 2022

**#11**  
**in the World for Politics**  
\*QS World University Ranking 2022

**#30**  
**in the World**  
\*QS World University Ranking 2023

**2700+**  
**International Students**



# Define yourself and make a difference to the world

## KEY FEATURES

### Dual degree program with ANU

Through the four-year program, students will graduate with a Bachelor of Global Liberal Arts from RU and a Bachelor of Asia-Pacific Affairs from ANU upon completion of the requirements and credits of both universities. In Japan, students study liberal arts with a focus on becoming a proactive member of the global society in the twenty-first century. In Australia, students experience the dynamism of globalization firsthand and deepen their studies of the Asia-Pacific region.

### World-Class Education that Supports Curving out Future Careers

Students receive a world-class education, learn from some of the best academics in the Asia-Pacific region, and graduate with two bachelor's degrees from leading universities in Australia and Japan. The exciting learning experience in both environments expands students' possibilities and helps them carve out future careers.

### 3 Years at RU in Japan + 1 Year at ANU in Australia

In this 4-year program, students spend 3 years in total at RU in Osaka and 1 year at ANU in Canberra. They learn from ANU faculty members based at RU's Osaka Ibaraki Campus (OIC) before and after they travel to Australia to study. Upon their return to Japan, students continue taking ANU courses to complete their studies of Global Liberal Arts and Asia Pacific Affairs.

	Year 1		Year 2		Year 3		Year 4	
April Enrollment	Spring 1	Fall 2	Spring 3	Fall 4	Spring 5	Fall 6	Spring 7	Fall 8
	RU Courses		RU+ANU Courses	ANU Courses		RU+ANU Courses		
September Enrollment	Fall 1	Spring 2	Fall 3	Spring 4	Fall 5	Spring 6	Fall 7	Spring 8
	RU Courses		RU+ANU Courses		ANU Courses		RU+ANU Courses	

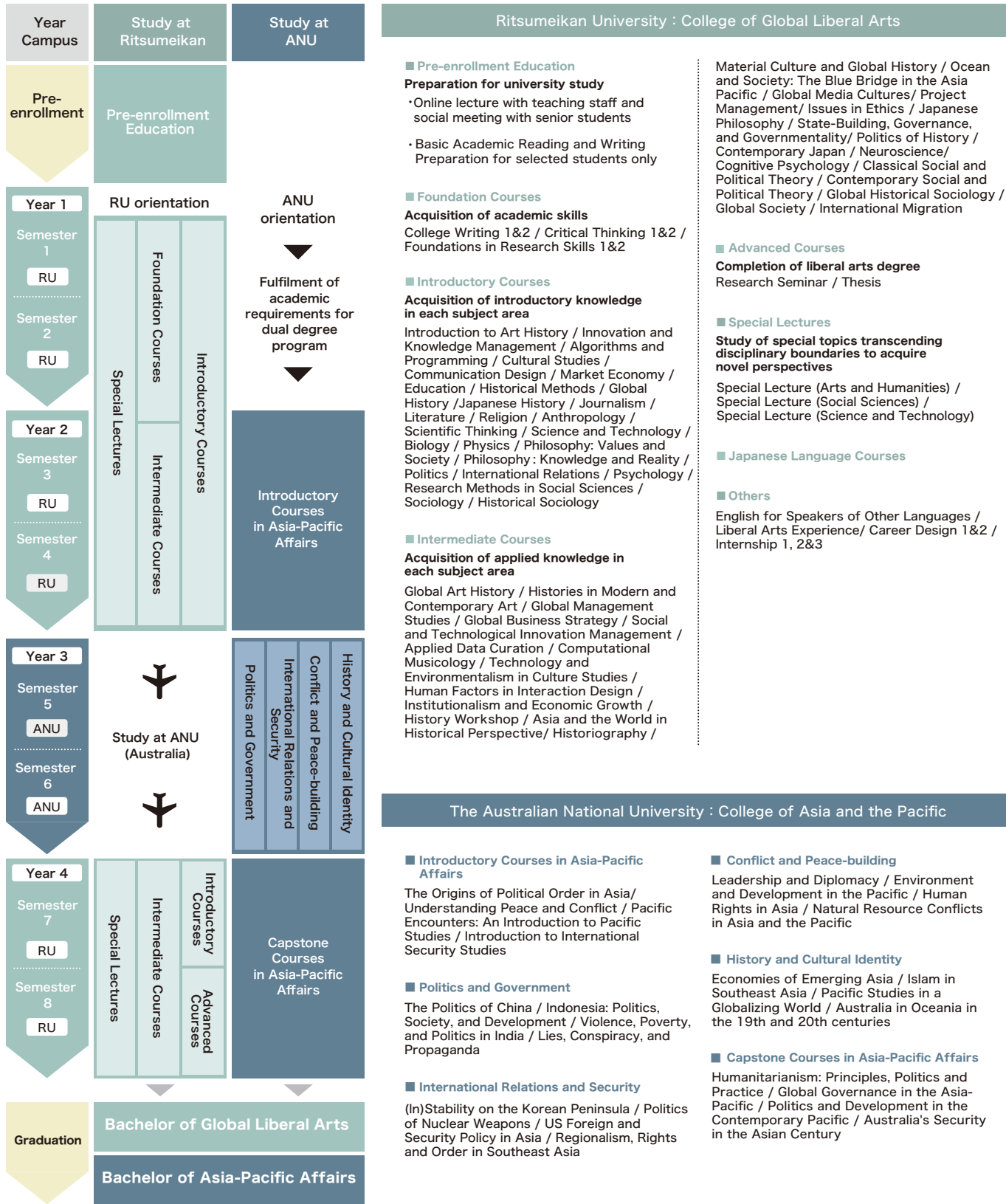
### Liberal Arts Education to Nurture Global Citizens

GLA provides students with a flexible yet rigorous interdisciplinary education through systematic exposure to fundamental knowledge from diverse disciplines. Upon successful completion of the program, students will be trained to apply their acquired knowledge for social development and problem solving.

Philosophy	History	Political Science	International Relations	Information Science and Engineering	Business Management
Economics	Social Science	Cultural Studies	Design	Psychology	Sustainable Society

## CURRICULUM

### College of Global Liberal Arts study flowchart (September enrollees)

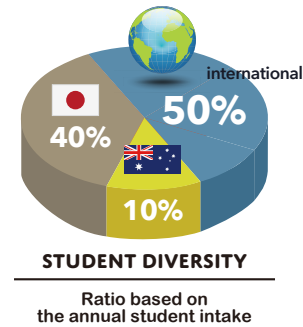




# Learning at GLA

## Truly international learning environment

GLA has 100 students per year, about 60% of whom are international students from around the world. 90 students start studying at RU and the remaining 10 at ANU. Outside of the classroom, both domestic and international students live in an on-campus dormitory built for GLA students. This international learning environment helps students develop cross-cultural communication skills.



## All courses in small and interactive group



GLA courses take place through an active learning approach based on small groups of no more than 25. The program consists of a combination of lectures emphasizing communication with professors and tutorials centered on discussion and group work with other students from diverse international backgrounds.

## Academic Advising Center (AAC) support for all students

GLA is committed to providing academic support to every student via the AAC. The mission of the AAC is to help students navigate the GLA curriculum and to make sure students remain on track for graduation, all through individual guidance.



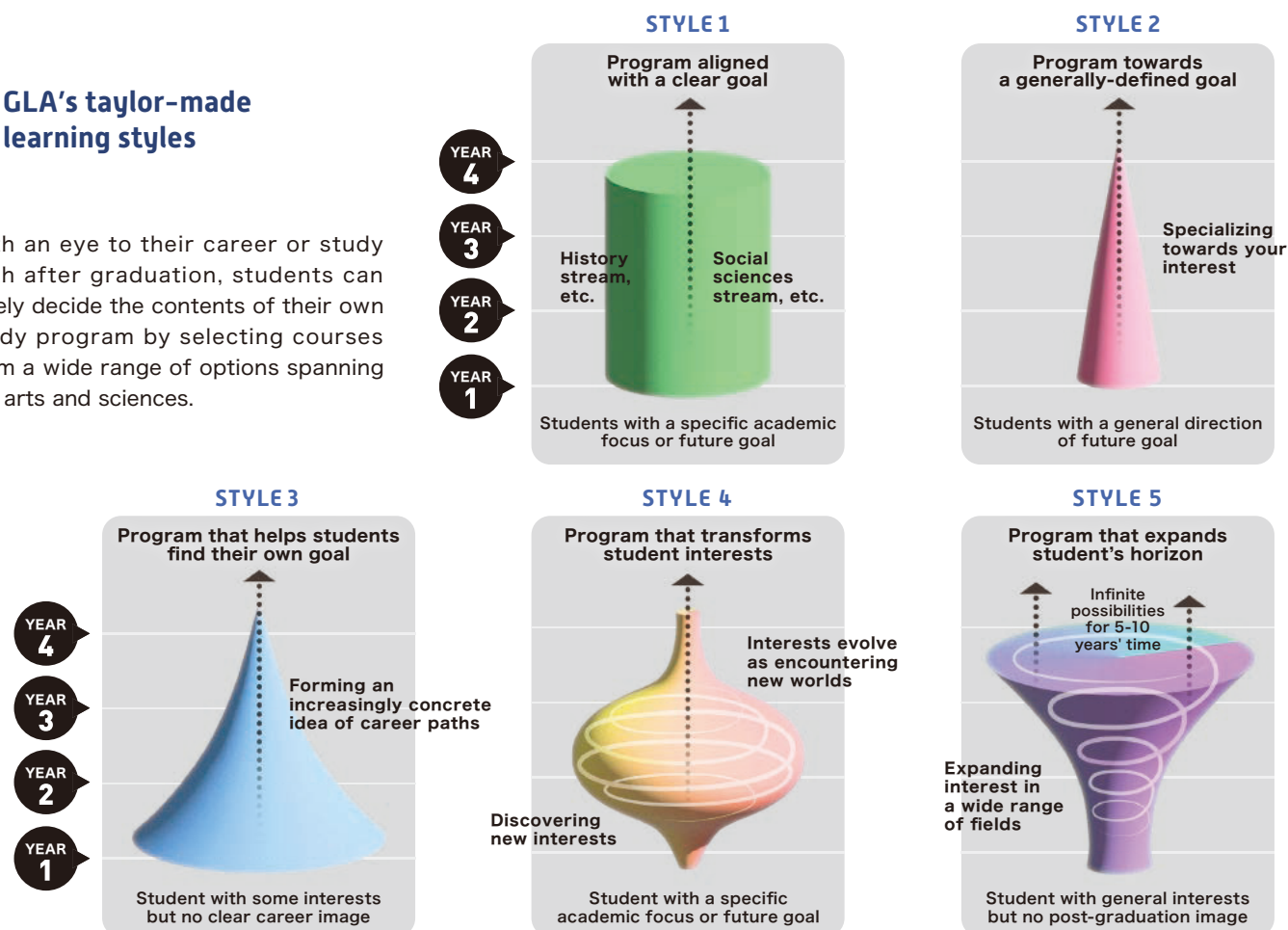
## A wide range of advisors to help students



- Pre-Enrollment Navigators: To help you prepare for enrollment
- Academic Advisors: To advise you on study planning
- Writing Coaches: To help you acquire academic writing skills
- Career Advisors: To assist you with career planning for after graduation

## GLA's tailor-made learning styles

With an eye to their career or study path after graduation, students can freely decide the contents of their own study program by selecting courses from a wide range of options spanning the arts and sciences.



# Career

GLA's distinctive system of career support

To support each individual GLA student to realize their future ambition, GLA works in coordination with the Ritsumeikan Career Center to provide optimal individual career support throughout the four years. Specifically, our support includes Career Design1, where first-year students consider their future life plan in relation to their studies at GLA over the coming four years, internships in which students gain experience of working life, and Career Design2, where third-year students clarify their post-graduation career or study path in light of their studies at ANU and other experiences. These are designed to stimulate individual career awareness in a progressive and continuous manner.

## GLA's independently developed system of career planning support



## Prospective Career Path

GLA graduates can look to employment in global enterprises in Japan and overseas (IT businesses, trading companies, advertising agencies, consultancies, etc.) or continued study at top-ranking graduate schools in Japan and overseas. Further deepening their specialisms at graduate school will throw open the path to global careers in government agencies, international organizations, NGOs, and other activities at international level.



## Over the four years of study, I gradually discovered what I wanted to do

International development consultant surveying and evaluating official development assistance projects

**Ai Ishitobi** Consultant, Tekizaitekisho LLC  
Graduated from the College of Policy Science, Ritsumeikan University, in 2000



After graduating from Ritsumeikan, I went on to graduate school then worked for the Consulate General of Japan in the U.S. and for an international cooperation NGO in Jordan before joining the UNICEF South Pacific Office in Fiji, where I was involved in monitoring and evaluating operations in 14 countries. This experience sparked my interest in project survey and evaluation, and currently I am employed as an international development consultant. My special area is survey and evaluation of official development assistance projects carried out in developing countries. The projects I work on are very varied, from disaster prevention to education and agriculture, so the job requires a lot of study, including digesting a large volume of documentation for each project. I feel that I have a firm grounding thanks to the broad knowledge base that I acquired at Ritsumeikan along with the ability to adopt varying perspectives and the experience of learning as a challenging and enjoyable process. These skills are essential to carrying out evaluation and analysis across a wide range of fields and to understanding the project background. By growing in commitment and experience, I hope to forge ahead with work that brings benefit to the world's disadvantaged communities. When I started at university, I had an unfocused interest in international cooperation, but not necessarily as a clear

future ambition. It was through university studies, internship experience, and encounters with many other people that I gradually formed an idea of what I wanted to do. My four years at university were a period of continuous exploration where I was able to interrogate my own actions while developing an interest in social issues. Of course, those emerging interests and priorities undergo subsequent change due to our life experiences. No-one is fortunate enough to always have the opportunity to do what they want just when they want to. The important thing is whether you can seize and utilize the limited opportunities that come your way. To be able to do that, you need to acquire the 'fitness' to make the most of opportunities. I think those four years at university are a precious time when you can acquire that fitness by listening to many different people, accumulating many different experiences, and learning in class to see different perspectives. If there is something you want to do, then go for it, whatever it is. The places you pass along the way will all have a positive impact on your subsequent career. I hope that your university life continues to bring great benefits in your post-graduation career. I think there are great prospects for graduates of GLA.



# Live & Learn

## OIC Global House for GLA students



### Home to expand my overview with diverse values and sensibilities

**Ai Kakiuchi** Second-year Student  
Attended Toyama University of International Studies High School



OIC Global House is home to students from all over Japan, international students from various countries and ANU students from Australia. All the rooms are single rooms, but there are a lot of communal spaces like the kitchen, dining and multipurpose rooms, so people mix naturally and the House has a buzzing atmosphere. We do things together, like attending online classes and tackling tough assignments. Because we support each other and come through difficulties together, being with the other students here comes to feel almost like being in a close and supportive family environment. Living in OIC Global House

not only improves our language ability, it also means we experience the food culture and daily habits of people from many different countries at first hand. That gives us the opportunity to examine objectively values of our own that we had taken for granted. I hope that my time in this international environment, listening to the ideas and thoughts of others and coming to gradually acknowledge them while continuing to value my own principles, will broaden my own worldview and also teach me the ability to respond to situations flexibly.

## International Dormitory

### A constant learning experience

OIC Global House is an international dormitory that forms part of the Wakebayashi International Plaza completed at the Osaka Ibaraki Campus (OIC) in 2019. Many students of the College of Global Liberal Arts reside here to enjoy an experience of shared learning and shared living within the campus environment. Alongside 200 single bedrooms, the facility also offers a traditional tea room, a Japanese-style garden, a multipurpose hall with a Noh performance stage, and other spaces promoting diverse international encounters within a Japanese-themed cultural setting.



• For detailed information, please visit the Ritsumeikan University website. [http://www.ritsumei.ac.jp/international/intl\\_students/life\\_info/oicdorm2/](http://www.ritsumei.ac.jp/international/intl_students/life_info/oicdorm2/)  
• During the study period in Australia, students will be accommodated in one of ANU's multiple student residences. Detailed information will be provided in the preparation phase of study abroad.

## Faculty Members



Yuko Ishihara



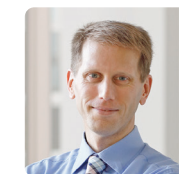
Saeko Ogiso



Yasuko Hassall Kobayashi



Hitomi Koyama



Christopher Johnson



Ayumi Takenaka



Eugene Choi



Helena Čapková



Christophe Thouny



Saeeda Batool



Miwa Hirono



Kayoko Fujita



Paul Haimes



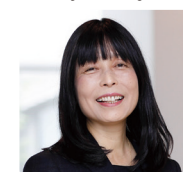
Ichiro Maekawa



Gian Powell Marquez



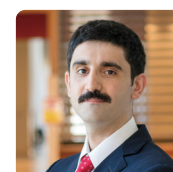
D. Moritz Marutschke



Noriko Yamagishi



Norihisa Yamashita



Huseyin Rasit

## Scholarships

The two scholarships indicated below are open to GLA students studying at ANU in the Dual Degree Program.

### Tuition Reduction for International Students with the "Student" Status of Residence

**100% Reduction**  
**50% Reduction**  
**20% Reduction**

- The amount of reduction will be notified with admission results.
- Scholarship awards are based on merit: admissions results for the 1st year and academic grades for each year from the 2nd year onwards.

### Scholarships Awarded to All Students Studying at ANU in the Dual Degree Program

- College of Global Liberal Arts Scholarship for Study Abroad**  
**700,000 JPY**
- Ritsumeikan University Study Abroad Challenge Scholarship**  
**300,000 JPY**

- Though students can receive both scholarships at the same time, neither of them can be awarded in combination with other scholarships specified in RU policies.
- These scholarships are awarded for the 1 year period at ANU.

The scholarship systems may be subject to change.

## Tuition

In taking Dual Degree Program, tuition fees of ANU shall not be charged separately. However, travel expenses, dormitory fees, and living expenses, etc. in relation to taking the courses offered in Japan and Australia shall be paid by students.

### Admission Fee and Tuition Fees 2023 Enrollees

(Unit : JPY)

Year 1				Year 2 and onwards		
Admission Fee	Tuition Fees for Spring Semester	Tuition Fees for Fall Semester	Total	Tuition Fees for Spring Semester	Tuition Fees for Fall Semester	Total
200,000	1,150,000	1,150,000	2,500,000	1,150,000	1,150,000	2,300,000

### Miscellaneous Membership Fees 2023 Enrollees

(Unit : JPY)

Student Government Board		Parents Association of Student Education Assistance		Total
Registration Fee	Annual Membership Fee	Registration Fee	Annual Membership Fee	
3,000	5,000	5,000	10,000	23,000

\*Membership fees for the Alumni Association and the Parents Association for Student Education Assistance are payable only in the first year of enrollment.