

# RITSUMEIKAN UNIVERSITY

## Graduate Schools

## Guide 2023

ENGLISH

### Access

**KYOTO** | ● Kinugasa Campus  
● Suzaku Campus

**From Kansai International Airport to Kyoto Station**  
75 min. by JR Limited Express "Haruka"

**From Tokyo Station to Kyoto Station**  
2 hr. 20 min. by JR Shinkansen (bullet train)

**From Kyoto Station to Kinugasa Campus**  
40 min. by taxi / 42 min. by bus

**From Kyoto Station to Suzaku Campus**  
Approx. 10min. by train and on foot

**SHIGA** | ● Biwako-Kusatsu Campus (BKC)

**From Kansai International Airport to Minami Kusatsu Station**  
Approx. 95 min. by JR Limited Express "Haruka" and train

**From Tokyo Station to Minami Kusatsu Station**  
Approx. 2 hr. 40 min. by JR Shinkansen (bullet train) and train

**From Minami Kusatsu Station to BKC**  
Approx. 20 min. by bus

**OSAKA** | ● Osaka Ibaraki Campus (OIC)  
● Osaka Umeda Campus

**From Kansai International Airport to Ibaraki Station**  
Approx. 80 min. by bus

**From Tokyo Station to Ibaraki Station**  
Approx. 2 hr. 40 min. by JR Shinkansen (bullet train) and train

**From Ibaraki Station to OIC**  
5 min. on foot

**From Kansai International Airport to Osaka Station**  
Approx. 1 hr. by bus

**From Osaka Station to Osaka Umeda Campus**  
5 min. on foot

\* Estimated time does not include time needed to change trains.

### Campus Locations



### Ritsumeikan University International Center at BKC

✉ [cger-bkc@st.ritsumei.ac.jp](mailto:cger-bkc@st.ritsumei.ac.jp)

1-1-1 Noji-higashi, Kusatsu, Shiga 525-8577 JAPAN

Telephone : +81-77-561-3946

For more information, visit the website

□ <http://en.ritsumei.ac.jp/admissions/>





■ About Ritsumeikan

The history of Ritsumeikan dates back to 1869 when a private academy of the same name was established in Kyoto. The academy has become a comprehensive institution consisting of two universities, including Ritsumeikan University (RU), four junior and senior high schools, and primary school. RU is proud to be one of Japan's premier level universities, with over 36,000 students studying in 16 undergraduate colleges and 21 graduate schools on its campuses in the cultural heart of Japan : KYOTO, OSAKA, and the adjacent SHIGA prefectures.

In order to keep up with the changes surrounding the university, Ritsumeikan has facilitated the development of its research activities through the establishment of various institutes for the humanities, social sciences and natural sciences, including the Ritsumeikan Global Innovation Research Organization (R-GIRO) and Ritsumeikan Asia-Japan Research Organization.

RU researchers of different fields have built cross-disciplinary partnerships pioneering new academic fields as well as fostering the next generation of young researchers. RU is a crossroads where outstanding faculty and students of unique backgrounds come together from across the world, collaborate creatively and rise above their differences.

■ Why Ritsumeikan University (RU)?

1. Academic Excellence

With high-level academics and cutting-edge research centers supported by over a century of history and tradition, RU has established itself as a center of academic excellence for future leaders both inside and outside of Japan.

2. Student Support

Personal, one-stop, multi-lingual international services for international students. With dozens of eateries, multicultural activities, and world-class facilities, there is always something new to explore RU.

3. Location

Want to spend the morning visiting world-renowned temples and shrines, the afternoon shopping in high-class boutiques, and the evening by the river with friends? All of this and more is waiting for you!

4. Global Network

As one of the most international and progressive private universities in Japan, RU can provide students with unique educational exchange and research opportunities through its extensive international network of partner institutions.

INDEX

Overview of Ritsumeikan University Graduate Schools	1
Campuses	2
Faculty Voices	4
Student Voices	5
Research Capability of RU Shown in Data	6
Tuition for 2022	8
Campus Relocation	8
Examples of Scholarships and Grants	9
Scholarship Information	10
Student Life at RU	12
Language Support Programs	14
Graduate School of International Relations	16
Graduate School of Economics	18
Graduate School of Science and Engineering	20
Graduate School of Information Science and Engineering	22
Graduate School of Life Sciences	24
Graduate School of Policy Science	26
Graduate School of Technology Management	28
Graduate School Courses Offered in Japanese	30
Application Information	32

■ Overview of Ritsumeikan University Graduate Schools

		DEGREE / Major	Enrollment Capacity
Kinugasa Campus	Graduate School of Law	● MASTER OF LAWS / Master's Program in Law ● DOCTOR OF LAWS / Doctoral Program in Law	60 Students 10 Students
	Graduate School of Sociology	● MASTER OF ARTS IN SOCIOLOGY / Master's Program in Applied Sociology ● DOCTOR OF PHILOSOPHY IN SOCIOLOGY / Doctoral Program in Applied Sociology	60 Students 15 Students
	Graduate School of International Relations SEP E	● MASTER OF ARTS IN INTERNATIONAL RELATIONS / Master's Program in International Relations ● DOCTOR OF PHILOSOPHY / Doctoral Program in International Relations	60 Students 10 Students
	Graduate School of Letters SEP	● MASTER OF ARTS / Master's Program: Major in Humanities Master's Program: Major in Informatics of Behavior and Cultures ● DOCTOR OF PHILOSOPHY / Doctoral Program: Major in Humanities Doctoral Program: Major in Informatics of Behavior and Cultures	70 Students 35 Students 20 Students 15 Students
	Graduate School of Image Arts* (* will be relocated to Osaka Ibaraki Campus in April 2024)	● MASTER OF IMAGE ARTS / Master's Program in Image Arts	10 Students
	Graduate School of Language Education and Information Science SEP	● MASTER OF ARTS IN LANGUAGE EDUCATION AND INFORMATION SCIENCE / Master's Program in Language Education and Information Science	60 Students
Biwako-Kusatsu Campus	Graduate School of Core Ethics and Frontier Sciences SEP	● DOCTOR OF PHILOSOPHY / Integrated Doctoral Program in Core Ethics and Frontier Sciences	30 Students
	Graduate School of Economics SEP E	● MASTER OF ECONOMICS / Master's Program in Economics ● DOCTOR OF PHILOSOPHY / Doctoral Program in Economics	50 Students 5 Students
	Graduate School of Sport and Health Science	● MASTER OF SPORT AND HEALTH SCIENCE / Master's Program in Sport and Health Science ● DOCTOR OF PHILOSOPHY / Doctoral Program in Sport and Health Science	25 Students 8 Students
	Graduate School of Gastronomy Management	● Master of Gastronomy Management / Master's Program in Gastronomy Management ● Doctor of Philosophy in Gastronomy Management / Doctoral Program in Gastronomy Management	20 Students 3 Students
	Graduate School of Science and Engineering SEP E	● MASTER OF SCIENCE or MASTER OF ENGINEERING Master's Program : Advanced Mathematics and Physics ● MASTER OF ENGINEERING Master's Program : Advanced Electrical, Electronic and Computer Systems Advanced Mechanical Engineering and Robotics Advanced Architectural, Environmental and Civil Engineering ● DOCTOR OF SCIENCE or DOCTOR OF ENGINEERING Doctoral Program : Advanced Mathematics and Physics ● DOCTOR OF ENGINEERING Doctoral Program : Advanced Electrical, Electronic and Computer Systems Advanced Mechanical Engineering and Robotics Advanced Architectural, Environmental and Civil Engineering	50 Students 140 Students 140 Students 120 Students 6 Students 8 Students 11 Students 15 Students
	Graduate School of Information Science and Engineering* SEP E (* will be relocated to Osaka Ibaraki Campus in April 2024)	● MASTER OF ENGINEERING / Master's Program in Advanced Information Science and Engineering ● DOCTOR OF ENGINEERING / Doctoral Program in Advanced Information Science and Engineering	200 Students 15 Students
Osaka Ibaraki Campus	Graduate School of Life Sciences SEP E	● MASTER OF SCIENCE or MASTER OF ENGINEERING / Master's Program in Advanced Life Sciences ● DOCTOR OF SCIENCE or DOCTOR OF ENGINEERING / Doctoral Program in Advanced Life Sciences	150 Students 15 Students
	Graduate School of Pharmacy	● MASTER OF PHARMACEUTICAL SCIENCES / Master's Program in Pharmaceutical Sciences ● DOCTOR OF PHARMACEUTICAL SCIENCES / Doctoral Program in Pharmaceutical Sciences ● DOCTOR OF PHARMACY/Doctoral Program in Pharmacy	20 Students 3 Students 3 Students
Suzaku Campus	Graduate School of Business Administration	● MASTER OF SCIENCE IN BUSINESS MANAGEMENT / Master's Program in Business Management ● DOCTOR OF PHILOSOPHY / Doctoral Program in Business Management	60 Students 15 Students
	Graduate School of Policy Science SEP E	● MASTER OF ARTS IN POLICY SCIENCE / Master's Program in Policy Science ● DOCTOR OF PHILOSOPHY IN POLICY SCIENCE / Doctoral Program in Policy Science	40 Students 15 Students
	Graduate School of Human Science	● MASTER OF HUMAN SCIENCE or MASTER OF PSYCHOLOGY / Master's Program in Human Science ● DOCTOR OF HUMAN SCIENCE or DOCTOR OF PSYCHOLOGY / Doctoral Program in Human Science	65 Students 20 Students
	Graduate School of Technology Management SEP	● MASTER OF TECHNOLOGY MANAGEMENT / Master's Program in Technology Management ● DOCTOR OF PHILOSOPHY IN TECHNOLOGY MANAGEMENT E / Doctoral Program in Technology Management	70 Students 5 Students
Suzaku Campus	Graduate School of Management	● MASTER OF BUSINESS ADMINISTRATION / Master's Program in Management	80 Students
	School of Law	● JURIS DOCTOR / Juris Doctor Program	70 Students
Suzaku Campus	Graduate School of Professional Teacher Education	● MASTER OF EDUCATION / Master's Program : Major in Teaching Profession and Educational Practices	35 Students

E Graduate Schools that enable students to earn a degree by getting necessary credits only in English.

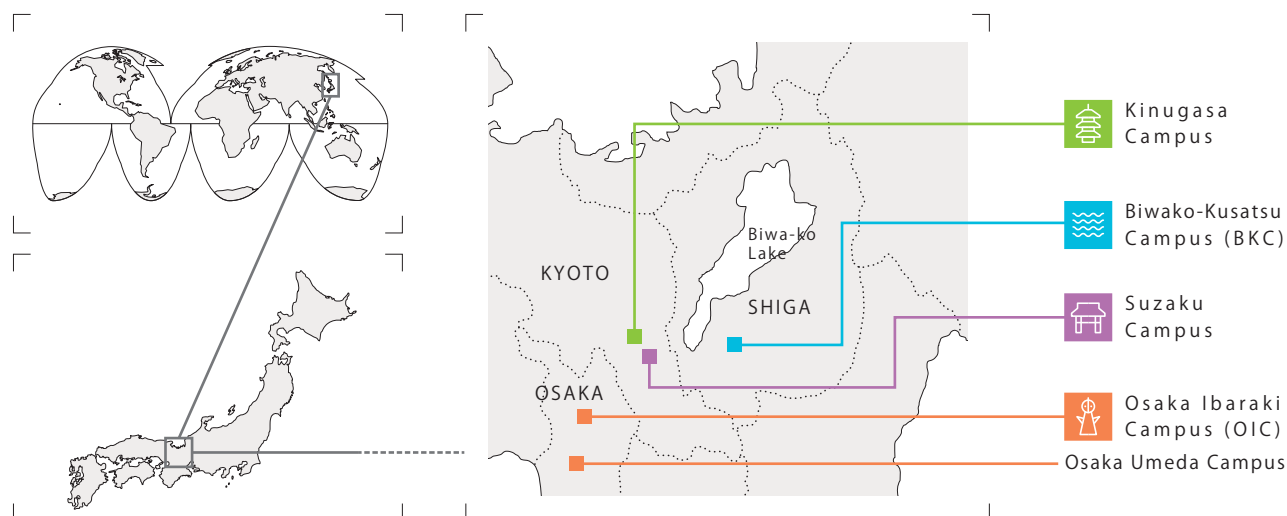
\* The graduate school based on the daytime and nighttime class system stipulated in The Standards for the Establishment of Graduate Schools (the Ministry of Education, Culture, Sports, Science and Technology).

SEP September Enrollment is available (Not all majors may be eligible. See Application Guidelines for details.)



# Rooted in community, collaborating with the world: 4 campuses providing the basis for study & research

Kansai has long prospered as a cultural, political and economic center of Japan. In addition to possessing many World Heritage sites and National Treasures that have been passed down through Japanese history, Kansai with its unique characteristics and attractiveness, is symbolized by the ancient capital of Kyoto, the rich natural environment of Shiga, and Osaka, the city of business, all cosmopolitan cities distinguished worldwide which continue to evolve day by day. The four campuses, located in areas with their own distinctive characteristics, cooperate with each other to undertake cutting-edge initiatives that contribute to the development of humankind, nature and local communities.

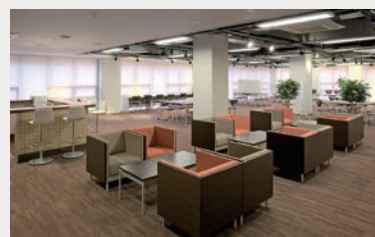


## Facilities, Equipment and Learning Environment

There are many facilities available to graduate students researching at Ritsumeikan University. These facilities offer various features in order to accommodate a variety of research and study styles.

### Communication spaces for sharing research achievements

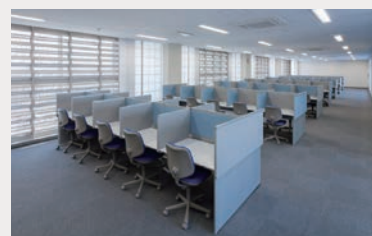
There is an open space where graduate students can share ideas and research achievements through meetings, workshops and presentations and communicate with each other and members of faculty. Users are also able to hold open-style seminars and poster sessions. There is also a lounge equipped with a kitchen and a counter where you can take a short break from your research.



Kyuronkan Performing Space (Kinugasa Campus)

### Spaces where graduate students can concentrate on their studies and research without being interrupted

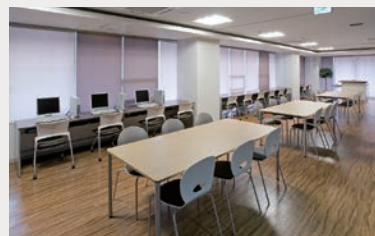
Graduate Study Rooms emphasize quietness, offering an atmosphere where graduate students can concentrate without being interrupted. The numerous partitioned-off carrel desks provide graduate students with a semi-private space to work on theses and presentation materials.



Graduate Study Room (OIC)

### Space for group meetings and discussions

This space allows students to conduct group work such as joint research or have a casual group meeting. PCs and printers are available.



Kyuronkan Space for Group Meetings and Discussions (Kinugasa Campus)

### Libraries: one of the largest book collections in Japan

The number of books in the collection is among the highest in private universities (About 3.38 million books), and many highly specialized research materials are stored in each reference room. Graduate Students can borrow 100 books for 100 days.



Hirai Kaichiro Memorial Library (Kinugasa Campus)

## CAMPUS

### Kinugasa Campus in KYOTO



A campus where graduate schools specializing in the arts, humanities and social sciences come together with the living and breathing history and culture of the ancient capital city of Kyoto

Surrounded by numbers of cultural heritages, Kyoto with its long and deep history has been a core city of Japan since ancient times. The campus is located in a quiet area of the city where many famous temples are situated. Kinugasa campus combines tradition and innovation in a place where students are able to disseminate cutting-edge research to the world while being surrounded by Japanese tradition and culture.

- Graduate School of Law ● Graduate School of Sociology ● Graduate School of International Relations
- Graduate School of Letters ● Graduate School of Image Arts\*
- Graduate School of Language Education and Information Science
- Graduate School of Core Ethics and Frontier Sciences

(\* will be relocated to Osaka Ibaraki Campus in April 2024)

### Biwako-Kusatsu Campus in SHIGA



A campus where world-class research and education are offered in a serene and natural environment

Offering top tier science education and equipped with some of the largest research facilities, Biwako-Kusatsu Campus (BKC) is a campus where students can conduct research activities that take advantage of the campus's location surrounded by nature and nearby Lake Biwa, and where numerous companies have established their own research facilities. It is an innovative campus which creates and disseminates world-class educational research, knowledge and technologies to all regions of the globe.

- Graduate School of Economics ● Graduate School of Sport and Health Science
- Graduate school of Gastronomy Management
- Graduate School of Science and Engineering
- Graduate School of Information Science and Engineering\*
- Graduate School of Life Sciences ● Graduate School of Pharmacy

(\* will be relocated to Osaka Ibaraki Campus in April 2024)

### Osaka Ibaraki Campus in OSAKA



A campus promoting the dissemination of education and research in Asia from the mercantile city of Osaka

The Osaka Ibaraki Campus (OIC) is located in Ibaraki City in Osaka Prefecture. Osaka is one of the biggest international and commercial centers in Japan, and the campus is expected to facilitate collaboration with industry and government institutions, promote the Ritsumeikan Academy's activities on the frontline of social collaboration and exchange, and support the further development of students.

- Graduate School of Business Administration ● Graduate School of Public Policy
- Graduate School of Human Science
- Graduate School of Technology Management
- Graduate School of Management

### Satellite Campus: Osaka Umeda Campus

A campus conveniently located near Umeda Station in Osaka

In addition to providing employment support and assistance with establishing strong social networks, this campus is a base for studies and research that offers many graduate courses. It is outfitted with the latest research equipment and facilities, providing students with the necessary means to accomplish a wide variety of tasks.



### Suzaku Campus in KYOTO



A campus conveniently located in the historical and cultural center of Kyoto and outfitted with modern facilities

This campus provides students at its professional graduate schools with excellent research equipment and facilities catering to a wide variety of research styles as well as providing environments for self-study. Located in the center of Kyoto, Suzaku Campus provides the convenience of an urban-style campus while being surrounded by Japanese history and culture.

- School of Law
- Graduate School of Professional Teacher Education



# Faculty Voices



Professor **FRENCH, Thomas William**,  
Graduate School of International Relations

## A place to craft a global mindset and the answers to international challenges

The diversity, openness, and excellence which surrounds me at Ritsumeikan always astounds me. It is clear to me that the programs we offer are the some of the strongest and most international in Japan. One of the keys to this is the global nature of our faculty, staff, and students. It is common to encounter more than ten nationalities in one classroom, something rare even in Graduate programs in the West. This diversity of experience and perspective is further enhanced by the various types of students we host, with a huge range of scholarly and professional backgrounds represented. These are mirrored in our highly diverse faculty, many of whom have a range of professional experience, often within major corporations, international, and national organisations, such as the UN and World

Bank. Even further international opportunities exist through our network of overseas links and Dual Master's Degree programs, including our new course with the University of East Anglia in Britain, which I helped to establish. Such an environment, coupled with our excellence in teaching and research makes this the perfect place to foster a truly International mindset and gain the skills and knowledge essential to take on the global challenges and opportunities of the future.

## A wonderful opportunity to live in cultural capital of Japan

Alongside the international nature of our university, a further outstanding feature we offer is the chance to live in Kansai, one of the most attractive, vibrant, and culturally important parts of Japan. With the ancient capital of Kyoto and the modern commercial metropolis of Osaka as its twin cores, the region is somewhere I am proud to live. Kyoto itself is the second most visited place in the world and remains in many ways the cultural capital of Japan, and the nearby cities of Osaka, Kobe, Nara and other all offer something engaging and interesting to help you learn more about Japan, both ancient and modern. The opportunities to learn about Japanese culture, business, food, arts and more, are unparalleled anywhere else in the country and the chance to live and study in such a region is a pleasure and a privilege not to be missed.

Professor **Tsutomu Araki**,  
Graduate School of Science and Engineering



## The Appeal of Graduate School is the Continuation of "Challenges and Growth"

My research is the development of semiconductors. Nowadays, semiconductors are like air; we cannot live without them. Going forward, they will continue to be needed in a variety of fields in order to achieve the goal of a society where everyone in the world can live comfortably, safely, and sustainably, as is set forth in the Sustainable Development Goals (SDGs). For example, the realization of autonomous vehicles will require sensors that accurately acquire information about their surroundings, AI that recognizes and evaluates this information, and a control device that moves the motor and steering wheel according to commands, with semiconductors playing a role in all these.

A variety of technological developments, including cars, smart phones, and the COVID-19 vaccines are progressing amid intense competition. To graduate from college and enter the workforce is to place yourself in this competitive environment. In today's competitive society, there is a demand for people who can respond creatively to rapid changes in the world with advanced expertise as their mainstay, and it is the responsibility of graduate schools to foster the development of this type of high-level human resource.

The appeal of going to graduate school is that people can continue to overcome challenges and experience growth through research activities. Research is never ending. We make a plan to achieve our research goals, conduct experiments repeatedly, and if things don't work out then we mull it over, think more, take actions, and sometimes get scolded, or commended. In graduate school, by going through a number of challenging periods students acquire not only specialized knowledge and skills, but also the robustness that will enable them to succeed in our harsh society.

## Graduate School Forms the Foundation for the Rest of Your Life

In the graduate schools of science, many students (graduate students and graduation research students) gather in laboratories and work on a daily basis. This includes colleagues from the same laboratory who share good times and hardships through mutual encouragement, researchers from outside the university and abroad who are collaborated with in academic activities and joint research, as well as young people of the same generation. Research is not something that can be done alone. We proactively incorporate opportunities to broaden interdisciplinary perspectives, such as across different fields and across the humanities and sciences, to form rich networks that will provide intellectual nourishment not only during graduate school but also throughout students' future careers. The two years of graduate school (master's course) is a very short time in this day and age when life expectancy is said to be 100 years. However, the experiences you have during this time will become the roots that sustain you for the next 50 years or more of your life after you take your place in society. I urge you to spend time in graduate school to grow into a large tree with firm roots.

# Student Voices

Find out more...



**ANDRIANI Furoida**

Graduate School of  
Life Sciences

Interview 01



## Q1 What made you interested in studying in Japan?

The first reason I wanted to study in Japan was simply because 'I love Japan'. The first time I came to Japan was as part of the Sakura exchange program at Ritsumeikan University. The program allowed me to do short-term research and learn Japanese culture. At that time, I was fascinated by how cool and advanced the research was here, and how beautiful Japan really is. All the experiences and memories I made during my stay in Japan left me craving for more. I decided to come back to Japan as a student, and it was the best decision I have made in my life.

## Q2 Would you describe some of the good things about graduate school at Ritsumeikan University?

The best thing about Ritsumeikan University is its full support to international students. I was really grateful for how this campus makes my life in Japan so comfortable. Related to the future plan, if we either want to look for a job or continue to a higher level of study, the graduate school will give us possible options and kindly assist us to achieve our goal. They also provide Japanese language classes every semester so that we can have more options to select in the future career and enjoy our life in Japan as well. Besides that, throughout the year, there are always interesting events like Japanese culture introduction, sharing ideas between students, or even small parties for international students held by Beyond Borders Plaza (BBP).

## Q3 Would you share your plans for after graduation?

After graduation, I will continue to pursue my PhD course in the same graduate school. Since I want to keep doing research in the field of material chemistry, after I graduate, I plan to work in a research institute or industry in Japan. Nevertheless, I would like to keep the research collaboration between Japan and Indonesia in the future. I believe that as I improve my Japanese language skill, there will be more doors open for my career path.

## Q4 Would you leave a message for international students who are interested in applying to graduate schools at Ritsumeikan University?

I highly recommend Ritsumeikan University as your first choice. As one of the top global universities, Ritsumeikan University has undeniable research quality. Beautiful campuses provide a very good study environment and daily facilities. Ritsumeikan University also gives full support to international students in terms of academic and daily issues. For Muslim students, they provide a praying room and halal corner in the cafeteria, which I am really grateful for.

**HU Jiarong**

Graduate School of  
Policy Science

Interview 02



## Q1 What made you interested in studying in Japan?

I was fascinated by Japan's cutting-edge science and technology, rich culture, and history with a safe and comfortable environment, I always dreamed of living in Japan since my childhood. After entering high school, I became interested in environmental problems such as global warming, waste issues and pollution. Considering Japan's world-class environmental science and management, I decided to study abroad in a Japanese university. In addition, Japan welcomes foreign students from all over the world by providing scholarships, convenient procedures and various living supports which makes our study programs smooth and enjoyable.

## Q2 Would you describe some of the good things about graduate school at Ritsumeikan University?

First of all, a broad range of the graduate programs at Ritsumeikan University offer classes in both English and Japanese. Second, the faculty and professors of the graduate school are very knowledgeable with much experience. Especially the GSPS program which is my graduate school, students can participate in the joint research projects together with other seminar members and receive feedback from multiple professors with different majors and backgrounds which provides us more insights and ideas when we work on our own research topic. Last but not least, the offices like the International Center, Research Office and Office of Academic Affairs are very supportive both in academic and extracurricular fields, making our life in graduate school more convenient and enjoyable.

## Q3 Would you share your plans for after graduation?

After graduation, I am planning to continue my study in the field of urban environment, especially in waste management issues through social psychology and policy approaches, and to pursue a PhD degree. I would like to become a professor and researcher in an academic institution and to be a bridge between Japan and my home country in order to solve urgent global environmental issues, contributing to the sustainable development goals.

## Q4 Would you leave a message for international students who are interested in applying to graduate schools at Ritsumeikan University?

I found that Ritsumeikan University has an inclusive environment with freedom where students' dreams can always come true. I strongly recommend that you find what you are interested in regarding graduate research, be specialized in that field, and please don't hesitate to join us here to chase your own dream at Ritsumeikan University.



# Research Capability of RU Shown in Data

## ■ Number of Research Projects Commissioned by Private Companies

Every year, the Ministry of Education, Culture, Sports, Science and Technology (MEXT) publishes the "Implementation Status of Industry-Academia-Government Collaborations at Universities. Ritsumeikan University has consistently ranked highly in the number of research projects commissioned by private companies for the past several years. These results are based on the Implementation Status of Industry-Academia-Government Collaborations at Universities survey that MEXT conducts every year with the purpose of reflecting upon the plans and proposals of industry-academia-government collaborations and other initiatives. (In AY 2020, the survey was conducted with 1,068 institutions, including national, public and private universities (including junior colleges), national, public and private technical colleges and inter-university research institutions throughout Japan.) In 1995, Ritsumeikan University was the first university in Japan to establish a liaison office for industry-academia-government collaborations, and since AY 2006, which was the first year of the Ritsumeikan University Research Enhancement Mid-Term Plan,\* the university has consistently promoted industry-academia-government collaborations as a key pillar for contributing to society through the results of research, focusing particularly on collaborations with local industries based in Kyoto, Shiga and Osaka. According to the Implementation Status in AY2019, "Number of Commissioned Collaborative Research Projects Implemented with Local Industries and Public Organizations (by Region)," the university ranked 1st among private universities in the Kinki region.

The university has been making efforts to improve its research support system through the promotion of the policies introduced in the Ritsumeikan University Research Enhancement Mid-Term Plan as well as trying to generate research achievements which lead to the university acquiring external funds and creating new centers for research. It could be said that these efforts, particularly the number of research projects commissioned by private companies, have contributed to our high performance and achievements over the past few years.

\*A series of five-year plans developed by Ritsumeikan University starting in AY 2006 to promote advanced research.

**Commissioned Research:** a system in which Ritsumeikan University researchers conduct research based on research themes from companies, etc., and then report the results to the party commissioning the research

**Collaborative Research:** a system where researchers from Ritsumeikan University and companies both share a common research theme and research responsibilities, or where researchers from companies are invited to do research at the university

## ■ Number of Research Projects Commissioned by Private Companies (Results and National Rankings of Past Years)

<AY2019>

Name of Institution	Number of projects	Category*	Year	Number of projects	Rank
1. Kindai University	323	Pr	2019	259	2
2. <b>Ritsumeikan University</b>	<b>259</b>	<b>Pr</b>	2018	236	3
3. Waseda University	212	Pr	2017	248	2
4. Keio University	205	Pr	2016	248	2
5. Nihon University	190	Pr	2015	287	1
6. Yamagata University	186	Nu	2014	247	1
7. Osaka University	164	Nu			
7. Takushoku University	164	Pr			
9. Tokyo University	154	Nu			
10. Juntendo University	129	Pr			

## ■ Number of Commissioned Collaborative Research Projects Implemented with Local Industries and Public Organizations (data by local area)

<Kinki area in AY2019>

Name of Institution	Number of projects	Area	Category*
1. Osaka University	406	Osaka	Nu
2. Kyoto University	191	Kyoto	Nu
3. <b>Ritsumeikan University</b>	<b>176</b>	<b>Kyoto</b>	<b>Pr</b>
4. Kindai University	168	Osaka	Pr
5. Kobe University	155	Hyogo	Nu

\* Pr: Private University Pu: Public University Nu: National University

\* Excerpt from the Industrial-Academic-Government Collaboration Implementation Status of Universities published by the Ministry of Education, Culture, Sports, Science and Technology (MEXT)

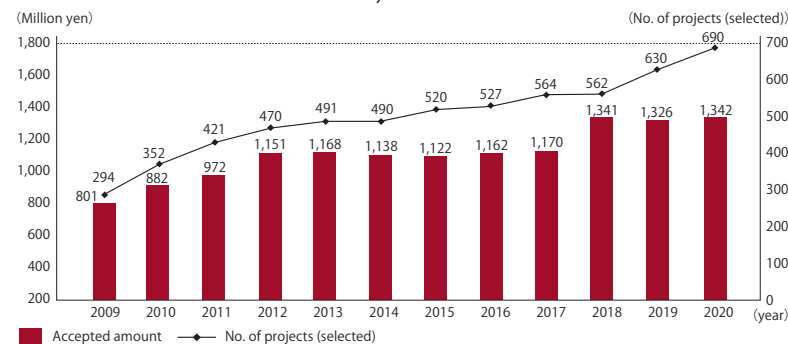
## ■ Grants-in-Aid for Scientific Research —KAKENHI—

According to the "Distribution of Grants-in-Aid for Scientific Research for FY 2020" published in December 2020, Ritsumeikan University ranked 3rd among private universities in Japan (1st within the West Japan region) for the amount of funding received as well as for the number of grants awarded. Nationally, the university also ranked 23rd for the amount of funding received, and 21st for the number of grants awarded. In addition, the amount of funding received, which had remained at the 1.1-billion-yen level for six consecutive years, exceeded 1.3 billion yen for the third consecutive year.

As for the number of projects by Review Section (i.e., the top 10 institutions for the number of selected projects by Medium-sized Section (\*total number of newly selected projects in the past three years)), we ranked among the top 10 institutions nationwide in 10 categories, ranking 2nd in Japan for "Sociology and related fields," the highest rank the university was awarded. It was also ranked 1st among private universities in Japan for "Geography, cultural anthropology, folklore, and related fields," "Sociology and related fields," "Human informatics and related fields," and "Environmental conservation measure and related fields," exemplifying our ability to utilize the university's strengths to conduct unique and ground-breaking research in a variety of fields. The share of female researchers among the total researchers whose projects were selected increased to 25.4%. Such a significant increase in the number of selected projects by women researchers is also one of the outstanding features of Ritsumeikan University.

**Grants-in-Aid for Scientific Research (KAKENHI):** competitive research funds provided by the Ministry of Education, Culture, Sports, Science and Technology that are intended to develop all scientific research from basic to applied research in all fields, ranging from the humanities and the social sciences to the natural sciences, with an annual budget exceeding 200 billion yen, making KAKENHI important and essential research funds for the development of science and technology in Japan

<Changes in the amount of funding received and the number of projects selected for Grants-in-Aid for Scientific Research at Ritsumeikan University>



<Research Funds Ranking>

### ■ Amount

1 Keio University
2 Waseda University
3 <b>Ritsumeikan University</b>
4 Juntendo University
5 Tokyo University of Science
6 Nihon University
7 Kindai University
8 Doshisha University
9 Tokai University
10 Meiji University

\* AY2020 amount and no. of selected projects (new + on-going) for private universities only.

### ■ No. of projects (selected)

1 Keio University
2 Waseda University
3 <b>Ritsumeikan University</b>
4 Nihon University
5 Juntendo University
6 Kindai University
7 Tokyo University of Science
8 Tokai University
9 Doshisha University
10 Kitasato University

■ Medium-sized Sections RU ranked within top 10 institutions for \*Total of newly selected projects in the past three years: Philosophy, art, and related fields; literature, linguistics and related fields; geography, cultural anthropology, ethnology, and related fields; law and related fields; political science and related fields; economics, business administration, and related fields; sociology and related fields; mechanical dynamics, robotics, and related fields; human informatics and related fields and environmental conservation measure and related fields.

For details, please visit the website

▶ [ritsumei.research](http://ritsumei.research)

# Research Organizations, Institutes, and Centers

Research organizations at Ritsumeikan University deploy various efforts to develop cutting-edge research. Such research contributes to society, and in turn leads to the advancement of research and education within the graduate schools. In order to promote research in the fields of the humanities, social sciences, and natural sciences, RU has established various research institutions and conducts a wide variety of research activities from basic to applied research. Those institutions also facilitate collaborations with industry and government institutions, working to get results that give back to society.

\* The following outlines information regarding research organizations, research institutions, and research centers as of April 1, 2021.

## ■ Ritsumeikan Global Innovation Research Organization (R-GIRO)

R-GIRO is a research organization under the direct supervision of the University President that was established in 2008 with the goal of "forming a research hub specifically for policy-driven research" and "strengthening the development of young researchers who will lead the next generation." The organization aims to contribute to the next generation of society by producing valuable research findings and actively disseminating those findings through the promotion of interdisciplinary research activities that integrate the fields of natural science with those in the humanities and social sciences in order to achieve a society that maintains a type of harmony between humans and nature.

## ■ Ritsumeikan Asia-Japan Research Organization

The Ritsumeikan Asia-Japan Research Organization is a research organization under the direct supervision of the University President. With the mission, "Cultivating Asia-literate, globally-capable human resources and contributing to the development of a common vision for the future of Asia and Japan," it promotes research that contributes to the "Asian Era" that is both strategic in nature as well as possessing concepts one would come to expect from Ritsumeikan. Serving as the nucleus of a diverse research network in collaboration with various institutions within Japan and overseas, it aims to promote Asia-Japan research from a global perspective. The organization focuses its efforts on conducting comprehensive practical research that possesses the essence of the keywords, "Symbiosis," "Co-creation," and "Reconciliation," and disseminating the results of such research.

■ Asia-Japan Research Institute

## ■ Kinugasa Research Organization

Kinugasa Research Organization was founded in 1998 and it supports research activity as a research organization which manages the research institutes and research centers. The organization's goal is to contribute to human welfare and social progress under the four principles of "autonomy," "democracy," "openness," and "peaceful use".

■ Institute of Humanities, Human and Social Sciences  
■ Institute of International Relations and Area Studies  
■ International Institute of Language and Culture Studies  
■ Institute of Human Sciences ■ Art Research Center  
■ Institute of Disaster Mitigation for Urban Cultural Heritage  
■ The Shirakawa Shizuka Institute of East Asian Characters and Culture  
■ Institute of Ars Vivendi  
■ Research Centers

## ■ BKC Research Organization of Social Sciences

The BKC Research Organization of Social Sciences is composed of one research institute and two research centers. It aims to contribute to the development of academic culture and human well-being through fundamental and applied research in social sciences and interdisciplinary fields with a basic focus on social networks, internationalism and openness.

■ Institute of Social Systems ■ Research Centers

## ■ Research Organization of Science and Technology

Research Organization of Science and Technology was established in 1994 as the Research Organization of Science and Engineering to contribute to the development of science and technology and local society. The organization's goal is to contribute to the development of science and technology and contribute to local society through joint research in industry-academia-government partnerships.

■ The Institute of Science and Engineering ■ Synchrotron Radiation Center  
■ VLSI Research Center ■ Research Centers

## ■ OIC Research Organization of Open Innovation and Collaboration

Respecting the three core concepts of Osaka Ibaraki Campus, Asia's Gateway, Regional Cooperation, and Urban Co-creation, Research Organization of Open Innovation and Collaboration's goal is to foster human resources who can play an important role in the global society, create innovation, and serve as a key player in the regional community.

■ The Research and Development Institute of Regional Information  
■ Research Centers

## topics

### RADIANT



Introducing Ritsumeikan University's Research Activities.

<http://www.ritsumei.ac.jp/research/radiant/eng/>  
Find out more about Ritsumeikan University's research activities...





# Tuition for 2022

Please note that the university fee is composed of the "admission fee" and "tuition fee".

**Spring semester: from April 1 to September 25**    **Fall semester: from September 26 to March 31**

\* The tuition fee students who entered the university in September pay as part of the admissions procedure covers tuition for the Fall Semester of the first year only.

\* Tuition fees may be revised when social factors, such as rapid inflation, have a significant impact on the University.

\* The Graduate Degree Programs offered in Japanese are not including in the table below.

\* Tuition for 2023 will be announced by mid-July on the website below.

<http://www.ritsumei.ac.jp/gr/en/scholarship/tuition.html/>



## Admission Fee (Academic Year 2022 Entry) (JPY)

Category	Fee
-Admission -Transfer Admission	200,000

Notes:

1) Payment of the admission fee is required in the year of admission only.

2) The students from Ritsumeikan Academy\* are not required to pay the admission fee. For more information, please refer to the Application Guidelines.

\*Ritsumeikan University and Ritsumeikan Asia Pacific University (APU)

## Tuition for Doctoral Program\* (JPY)

1st Year		2nd Year		3rd Year	
Spring Semester	Fall Semester	Spring Semester	Fall Semester	Spring Semester	Fall Semester
250,000	250,000	250,000	250,000	250,000	250,000

\*Excluding Integrated Doctoral Program and Four-Year Doctoral Program

Notes:

1) Fourth- to sixth-year students who are enrolled in excess of the standard completion term in a doctoral program are only required to pay one half of the amount stipulated in the chart.

2) The tuition fee for those who enrolled for longer than the standard term for course completion who have fulfilled all the relevant graduate school's requirements for completion, except those relating to the doctoral dissertation, shall be 100,000 JPY per semester.

## Tuition for Master's Program (JPY)

Graduate School (English-based Program)	1st Year		2nd Year	
	Spring Semester	Fall Semester	Spring Semester	Fall Semester
-Policy Science	381,400	381,400	381,400	381,400
-Economics (MPED) -International Relations (GIRP)	457,700	457,700	457,700	457,700
-Science and Engineering (except for Mathematics Course)	584,800	584,800	584,800	584,800
(Mathematics Course)	546,600	546,600	546,600	546,600
-Information Science and Engineering -Life Sciences	578,300	578,300	578,300	578,300

Notes:

Third- and fourth-year students who are enrolled in excess of the standard completion term in a master's program are only required to pay one half of the amount stipulated in the chart.

# Campus Relocation

**Graduate School of Information Science and Engineering** to Relocate to the Osaka Ibaraki Campus (OIC) from Biwako-Kusatsu Campus (BKC) in April 2024

With the relocation of the distinctive colleges and graduate schools, Ritsumeikan will promote the transformation of OIC into a dynamic platform that expands the university's connections with the community where we can perform demonstration projects and create value in order to find solutions to the issues facing society.

## Graduate School of Information Science and Engineering

→Relocation to Osaka Ibaraki Campus (OIC)

Year of Enrollment	2022		2023		2024		2025		2026	
	Spring Semester	Fall Semester	Spring Semester	Fall Semester	Spring Semester	Fall Semester	Spring Semester	Fall Semester	Spring Semester	Fall Semester
Sep. 2022		BKC (Year 1)		BKC→OIC (Year 2)		OIC (Year 3*)				
Apr. 2023			BKC (Year 1)		OIC (Year 2)		OIC (Year 3*)			
Sep. 2023				BKC→OIC (Year 1)	OIC (Year 2)		OIC (Year 3*)			
Apr. 2024					OIC (Year 1)		OIC (Year 2)		OIC (Year 3*)	

\*Year 3: Doctoral Program only

## Biwako-Kusatsu Campus in SHIGA



## Osaka Ibaraki Campus in OSAKA



# Examples of Scholarships and Grants

## Model case for receiving Scholarships and Grants

Many of the students take advantage of scholarships at Ritsumeikan University. Financial burden can be reduced by getting scholarship benefits.

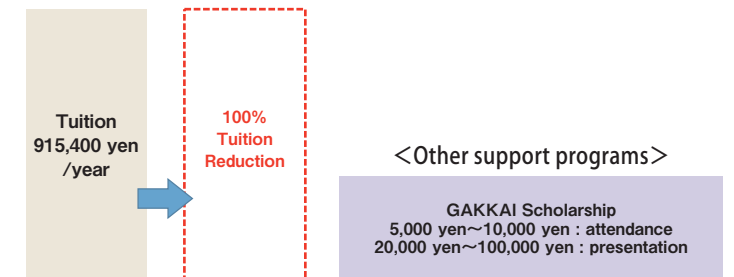
\*Please note that the contents of the scholarships below are as of May 2022 and subject to change. Please refer to pp. 10-11 for details.

### International Student Master's Program 1st Year

#### <Tuition Reduction Scholarship for International Students, Graduate Students Category I >

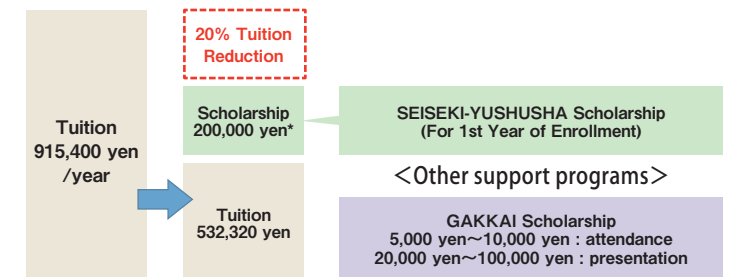
Privately financed international students with a resident status of "Student" and students who achieved outstanding results in the entrance examination get a 100% tuition reduction.

There are also other scholarships and grants available such as GAKKAI Scholarship. The GAKKAI Scholarship is limited to two disbursement per year.



#### <SEISEKI-YUSHUSHA Scholarship (For 1st Year of Enrollment) and Tuition Reduction Scholarship for International Students, Graduate Students Category II >

Students who achieved great results in the entrance examination are awarded a SEISEKI-YUSHUSHA Scholarship (For 1st Year of Enrollment). Also, privately financed international students with a resident status of "Student" generally get a 20% tuition reduction. For those who receive the SEISEKI-YUSHUSHA Scholarship (For 1st Year of Enrollment) and get a 20% tuition reduction, the total tuition amount will be 532,320 yen.



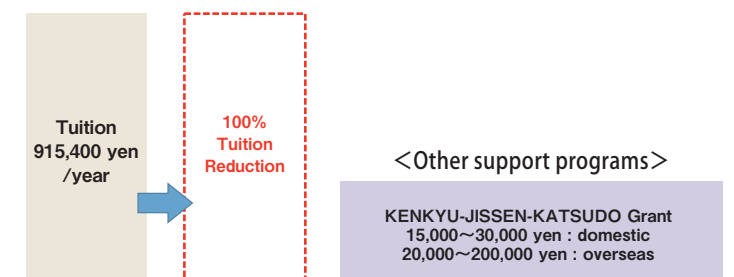
\*In case of receiving 200,000 yen.

### International Student Master's Program 2nd Year

#### <Tuition Reduction Scholarship for International Students, Graduate Students Category I >

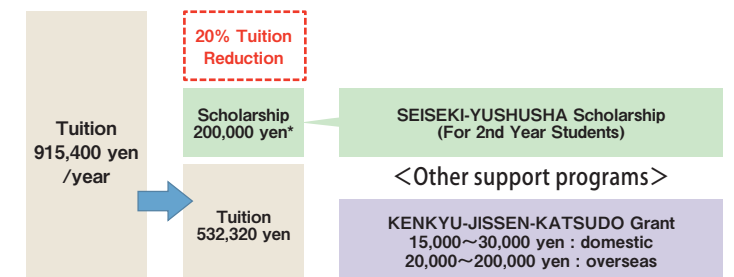
The reduction period is set for a standard program duration. Master's Program 2nd year students continue to receive the benefits.

There are also other scholarships and grants available.



#### <SEISEKI-YUSHUSHA Scholarship (For 2nd Year Students) and Tuition Reduction Scholarship for International Students, Graduate Students Category II >

Students who achieved great results in their studies and research activities during their first year are awarded a SEISEKI-YUSHUSHA Scholarships (For 2nd Year Students). Also, privately financed international students with a resident status of "Student" generally get a 20% tuition reduction. For those who receive the SEISEKI-YUSHUSHA Scholarship (For 2nd Year Students) and get a 20% tuition reduction, the total tuition amount will be 532,320 yen.



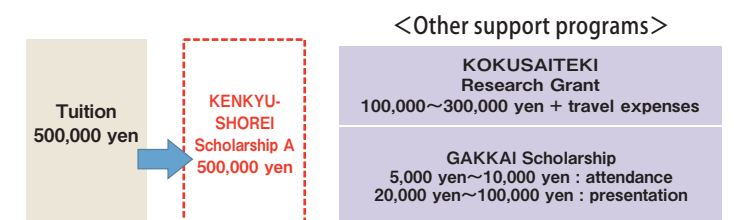
\*In case of receiving 200,000 yen.

### International Student Doctoral Program 1st Year

#### <KENKYU-SHOREI Scholarship A>

Students who have achieved excellence in their field of research or can be expected to, are awarded a KENKYU-SHOREI Scholarship A and get an amount equivalent to the total amount of tuition.

There are also other scholarships and grants available.





# Scholarship Information

There are a number of scholarships that prospective students can secure before beginning their studies at RU, in addition to the scholarships and tuition reduction schemes that international students may apply for after commencing their studies. Scholarships are provided not only by RU, but also by organizations such as ADB and the Japanese government.

\* Please note that the contents of the scholarships below are as of May 2022 and subject to change without advanced notice. Please refer to the application guidelines of each scholarship and research grant or the website for detailed updated information.

Scholarship Type	Master's Program	Doctoral Program
Prize Fellowships for International Students (Governments, Organizations, etc)	Japanese Government (Monbukagakusho) Scholarship	
	Asian Development Bank-Japan Scholarship Program (ADB)	—
	Japan-International Monetary Fund Scholarship Program for Asia(JISPA)	—
	Monbukagakusho Honors Scholarship for Privately Financed International Students	
Fellowships for International Students (RU)	Ritsumeikan University Tuition Reduction Scholarship for International Students, Graduate Students Category I (100%)	
	Ritsumeikan University Tuition Reduction Scholarship for International Students, Graduate Students Category II (20%)	
	Ando Momofuku Scholarship for International Students	
	International Students Assistance Scholarship by Ritsumeikan faculty/staff	
Prize Fellowships	SEISEKI-YUSHUSHA Scholarship (For 1st Year of Enrollment) (Academic Excellence Scholarship for 1st Year of Enrollment)	KENKYU-SHOREI Scholarship (Prize Fellowship for Doctoral Degree Students)
	SEISEKI-YUSHUSHA Scholarship (For 2nd Year Students) (Academic Excellence Scholarship for 2nd Year Students)	NEXT Fellowship Program (NEXT Fellowship Students)
	—	RARA SPRING (RARA Student Fellow)
Support System for Career Development	GAKKAI Scholarship (Academic Conference Scholarship)	GAKKAI Scholarship (Academic Conference Scholarship)
	KENKYU-JISSEN-KATSUDO Grant (Grant for Students Participating in Study Programs)	KOKUSAITTEKI Research Grant (International Research Grant)
		KOKUNAI Research Grant (Domestic Research Grant)
	—	Internship Scholarship
	Program to Support the Submission of Academic Papers in English (for Graduate Students)	
	—	KOKUGAI KYODO-KENKYU Scholarship (Scholarship for Overseas Joint Research)
	—	Grant for Publication of Doctoral Dissertation

## Apply before enrollment

Scholarship Name	Qualifications		Scholarship Conditions		Notes	Recipients in 2021
	Nationality & Age	Eligible Graduate School(s)	Benefits	Period		
Japanese Government (MEXT) Scholarship*1	Countries recognized by the Japanese government; Under 35	All graduate schools*3	145,000-148,000 yen/ month, tuition fees, travel expenses	Master's 2years Doctoral 3years	Applicants must apply to RU via special MEXT admissions	53*4
Asian Development Bank-Japan Scholarship Program(ADB)*1	Citizens of ADB developing member countries; Under 35	Economics (Master's program only)	147,000 yen / month, tuition fees, travel expenses, book allowance, medical and health insurance	2 years	Applicants must apply to RU for admission and to ADB for scholarship separately	6
Ritsumeikan University Tuition Reduction Scholarship for International Students, Graduate Students Category I (100%)	—	All graduate schools*3	100% exemption from tuition fees	Master's 2years Doctoral 3years	Awarded to Regular Admissions applicants based on entrance exam performance	62
SEISEKI-YUSHUSHA *2 Scholarship (For 1st Year of Enrollment) (Academic Excellence Scholarship for 1st Year of Enrollment)	—	(Master's programs only) All except School of Law and Graduate School of Management	100,000 - 600,000 yen deducted from tuition. (varies by graduate school)	1 year	Awarded to Regular Admissions applicants based on entrance exam performance	395

\*1 Recipients of these scholarships may not accept any additional scholarships.

\*2 Notification of award is sent to the successful applicants along with admission results.

\*3 Actual graduate schools selected each year based on university protocol.

\*4 The number of students is for the MEXT University Recommendation Scholarship only.

## Apply after enrollment (for self-financed international students)

Scholarship/Grant Name	Eligibility Criteria	Scholarship Conditions		Application Period	Recipients in 2021
	Year Level/Age	Benefits	Period		
Ritsumeikan University Tuition Reduction Scholarship for International Students, Graduate Students Category II (20%)	All Levels	20% exemption from tuition excluding (admission fee)	1 year	Spring / Fall	705*1
Ando Momofuku Scholarship for International Students	All Levels (Under30)	1,000,000 yen / year	1 year	Spring	2
International Students Assistance Scholarship by Ritsumeikan Faculty/Staff	All Levels	250,000 yen / year	1 year	Spring	7
Monbukagakusho Honors Scholarship for Privately Financed International Students	All Levels	48,000 yen / month	1 year	Spring	14
			6 months	Fall	57
SEISEKI-YUSHUSHA Scholarship (For 2nd Year Students) (Academic Excellence Scholarship for 2nd Year Students)	Enrolled in the 3rd semester of Master's Degree Program	100,000 - 600,000 yen (depending on graduate schools) / year	1 year	Spring or Fall One time in the 2nd year	347
KENKYU-SHOREI Scholarship (Prize Fellowship for Doctoral Degree Students)	Doctoral Degree Program	S*2: Equivalent to the yearly tuition A: Equivalent to the yearly tuition B: Equivalent to half of the yearly tuition	1 year	Spring or Fall One time (Not all of graduate schools) recruit in the fall semester.)	146

\*1 After enrollment, all students in English-based programs who meet the eligibility requirements and complete an application by the deadline are granted the award. The number of recipients listed only includes newly enrolled student.

\*2 Students who have a status of JSPS Research Fellowship for Young Scientists DC1/DC2, or who passed the 1st stage screening.

Scholarship/Grant Name	Summary of the Scholarship / Grant	Eligibility	Amount
GAKKAI Scholarship (Academic Conference Scholarship)	This scholarship assists with part of expenses for participation and presentations at academic conferences.	All Levels	5,000 yen : online attendance 10,000 yen : attendance on site 20,000 yen : online presentation / proceeding (submitted paper) is published 30,000 yen : presentation in Japan 100,000 yen : presentation overseas
KENKYU-JISSEN-KATSUDO Grant (Grant for Students Participating in Study Programs)	This grant is designated to support a part of participation fee when graduate students participate in study programs (KENKYU-JISSEN-KATSUDO) organized by target graduate schools.	Master's Degree Program	15,000-30,000 yen : domestic 20,000-200,000 yen : overseas
KOKUSAITTEKI Research Grant (International Research Grant)	This research grant is designed to accelerate and support international research activities.	Doctoral Degree Program	Research Grant 100,000-300,000 yen and Travel Expenses
KOKUNAI Research Grant (Domestic Research Grant)	This research grant is designed to accelerate and support domestic research activities.	Doctoral Degree Program	5 to 20 days : 50,000 yen 21 days or more : 100,000 yen
Internship Scholarship	This scholarship is designed to support the fee when graduate students participate in Internship programs conducted by corporations etc.	Doctoral Degree Program	15 to 30 days : 100,000 yen 31 to 59 days : 150,000 yen 60 days or more : 200,000 yen
Program to Support the Submission of Academic Papers in English (for Graduate Students)	The purpose of this program is to encourage and prompt graduate students to internationally disseminate their research results through research article publication in English.	All Levels	up to 30,000 yen : Proofreading Expenses up to 50,000 yen : Submission Expenses
KOKUGAI KYODO -KENKYU Scholarship (Scholarship for Overseas Joint Research)	This scholarship is designated to support a part of participation expenses that graduate students pay when they participate in the eligible joint research programs for this scholarship with overseas research institutions managed by graduate schools.	Doctoral Degree Program	100,000-800,000 yen
Grant for Publication of Doctoral Dissertation	This program is to encourage and prompt graduate students to publish their dissertation. This program will provide financial assistance to support those who earned a doctoral degree from Ritsumeikan University to publish their doctoral dissertation. Published books will be stored and shelved in Ritsumeikan University Libraries.	Doctoral Degree Program	Maximum of 1,000,000 yen



### Admissions & Aid

Information on scholarships to apply for before enrollment



### Graduate Student Career Path Support Center

Information on scholarships and grants offered by Graduate Student Career Path Support Center



## Other available scholarships for international students

For more information about scholarships available for international students, please refer to the International Student Handbook.

Inquires : International Center at BKC

[cger-bkc@st.ritsumei.ac.jp](mailto:cger-bkc@st.ritsumei.ac.jp)





# Student Life at RU

## ■ Student Support

RU offers the complete range of student advisory services, including career planning, academic guidance, and services catering specifically for international students, such as assistance in obtaining visas and support for finding housing. There is also an extensive range of dining and retail options close to each of the campuses. RU is committed to providing students with the best possible opportunity to reach their full potential.

## ■ International Center

At the International Center, students can receive assistance with visa issues, accommodation, health, and day to day life. When new international students arrive at RU, the International Center organizes thorough orientations that include sessions outlining the procedures for obtaining their residence card, health insurance, and bank accounts.

A few words from the International Student Support Coordinator "After traveling overseas to study with us, I'm sure you will encounter all sorts of fun and new experiences here in Japan. By that same token, however, it's also quite likely that you will face new difficulties and experience anxiety which you may not ever have dealt with in your home country.

Of course there is the language barrier, but beyond that there are certain to be differences in culture, customs, and even the way of thinking between Japan and your home country which will occasionally come up and cause you problems, or at least a bit of uncertainty, in your daily life. While living in a foreign country, Japan, and while studying hard at the same time, you will most likely feel stressed at one time or another. Many international students go through and overcome similar experiences before heading out into the world post-graduation. It is through these trials that international students often show such splendid development as people by the time they reach their graduation.

Since the 2019 academic year, International Student Support Coordinators have been stationed at the International Centers on each of Ritsumeikan's campuses to help international students deal with and overcome the problems and issues they face during their life studying abroad. Our support isn't limited to just big problems either - we are happy to hear and help you work through any small worries or concerns you may have. Please do not hesitate to speak with us when you visit the International Center! We look forward to talking with you!"

## ■ Peer Support

Outside of the regular curriculum RU provides an extensive support net for its students, stretching from "Peer Support" which is offered by fellow students, to the "Orita" (also known as "Enta") system, in which students in their 2nd year and up help incoming students get accustomed to university life. This system was first introduced by Ritsumeikan and has since gained traction at other universities here in Japan. In addition to these, the "Tutors for International Students Assembly" support program (TISA) is also maintained by the university. TISA consists of currently enrolled students who assist both newly incoming and currently enrolled international students in their daily and academic life.



## ■ Health Care

### ■ Health Center

Located on campus, the health center promotes the health of students through a combination of general health support services and a medical office that specializes in internal medicine. To ensure their good health, all students must take part in a yearly health check that assesses their overall health condition and, depending on the result, follows up with additional tests as necessary.

### ■ Student Support Room

Also available for students of RU is the "Student Support Room." Students are free to use this room's facilities and consult its experts when they are feeling down or are in need of expert consultation or advice. Professional counselors can assist students in English or Japanese.

## ■ Administrative Office of Each Graduate School

The administrative office of each graduate school provides advice on all academic matters, including on course registration and internship opportunities.

## ■ Career Center

The Career Center offers career support for international students looking to pursue future employment in Japan. In addition to providing career consultation, information on internships, and on-campus company information sessions, the center organizes various career development events throughout the year.

## ■ Regional Exchange

Students at Ritsumeikan University also have ample opportunity to interact with members of the local community. Community members are invited to participate in events held on campus, giving students and members of the community a chance to meet and deepen their understanding of Japanese culture and local traditions through a variety of activities. At the same time, international students have many opportunities to give presentations and share the culture and traditions of their own countries with their fellow students and the community.



## ■ Living in Japan

Living expenses will vary depending on each student's individual lifestyle, but the following is a list of estimated expenses for an average student.

Notes	Approximate Monthly Cost
Rent	30,000 – 60,000 yen
Utilities	10,000 yen
Internet	4,000 yen
Basic Food	30,000 – 50,000 yen
National Health Insurance	2,000 yen
Mobile Phone	4,000 yen
Local Transportation	12,000 yen
Leisure Activities	25,000 yen
Total	117,000 – 167,000 yen

## ■ Housing

RU's three main campuses each has an international dormitory, known as an I-House, located nearby. \*There are three dormitories at Kinugasa Campus, however, graduate students are not admitted.

### Monthly Lodging Fees

Room Type	BKC I-House		OIC I-House
	Type A (Single, private toilet only)	Type B (Single, private shower & toilet)	Shared (6 students/unit (private bedrooms))
Rent	39,000	47,000	50,000
Utilities (Electricity, Internet, etc.)	Electricity charged as used. Rent includes internet and water.	Electricity charged as used. Rent includes internet and water.	7,200
Bedding Rental Fee	2,000	2,000	2,000
Security Deposit	Equal to one month's rent	Equal to one month's rent	Equal to one month's rent

\*Fees are current as of April 2022.

### Initial Move-in Fees

•BKC I-House: Security deposit, 2 months' rent and bedding rental fees.  
•OIC I-House: Security deposit, 1.5 - 2 months' rent (depending on move-in date), 2 months' of utilities and bedding rental fees, and the entrance fee 10,000.  
For more details: <http://en.ritsumeik.ac.jp/lifecareer/dorm/>

All Campuses:  
Students can find information about campus-area apartments at the Student Co-op.

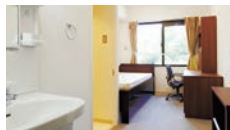
## ■ Eateries

Each of RU's three main campuses houses at least one large cafeteria, with Kinugasa and BKC's cafeterias open until 8:00 pm, and OIC's cafeteria open until 7:00 pm. These cafeterias stay open late to ensure that students finishing up evening club activities or attending late lectures can relax and have a healthy meal afterwards. For students starting things off early the "100 Yen Breakfast Set" has become a popular choice. In addition to the large main cafeterias, each campus is home to multiple smaller eateries and places to relax including Tully's Coffee at Kinugasa Campus, Starbucks at OIC, and "SHIRU CAFE" at BKC.



## ■ Events on Campus

Throughout the course of the year, the university's International Center organizes a variety of international exchange events for students. From visits to historical sites in Kyoto and Shiga to hands-on workshops in Japanese arts, crafts, and cooking, students are provided with plenty of opportunities to experience and enjoy Japanese culture outside of the curriculum.



BKC International House : Private Room Type A



# Language Support Programs

Ritsumeikan University offers the following language support programs to International Graduate Students.

For details, please visit our website ▶ [ritsumei Language Support Programs](http://www.ritsumei.ac.jp/ru_gr/g-career/eng/language/)



## 1) ONLINE Academic Writing Tutorials

The ONLINE Academic Writing Tutorials provide you with the opportunity to have your written work checked by an English instructor. You can sign-up for a private (one-on-one) tutorial session in which an instructor will check your actual paper to find areas which need improvement. Students who are planning on submitting a thesis or any other form of academic paper but lack confidence in their English writing ability should take advantage of this opportunity.

### <Session Schedule>

These sessions are scheduled to be offered during the designated period per semester (subject to change).

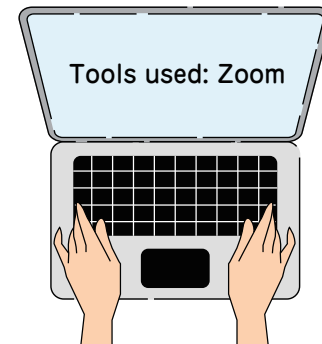
However, the number of sessions offered differs depending on each semester.

Please check our website below for detailed information.

[http://www.ritsumei.ac.jp/ru\\_gr/g-career/eng/language/](http://www.ritsumei.ac.jp/ru_gr/g-career/eng/language/)

### <Notes>

- The instructor will NOT instruct or give professional advice on the contents of your research.
- You must bring your own paper (or select pages from your paper) on the day of the tutorial since the writing instruction will be based on an actual written work.



## 2) Japanese Conversation Program

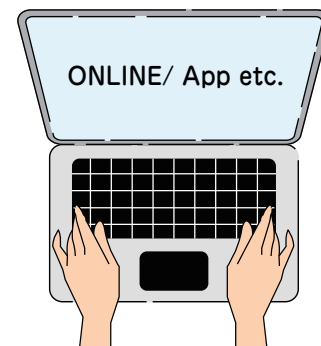
The purpose of this program is to improve international graduate students' Japanese skills mainly for English-based program students.

This program is offered as an online study.

### <Course Schedule/Description>

For details, please check our website.

[http://www.ritsumei.ac.jp/ru\\_gr/g-career/eng/language/](http://www.ritsumei.ac.jp/ru_gr/g-career/eng/language/)



## English Academic Writing (e-learning)

\*This is managed by the Research Office

Graduate Students can attend the English academic writing program for researchers (nature masterclasses).

This helps you to learn how to write scientific papers and peer review method by using e-learning system.

<http://www.ritsumei.ac.jp/research/member/news/detail/?id=219>

(The attached PDF, *Nature Masterclasses Online Courses* 登録手順(英文) shows "How to register" in English).



## Beyond Border's Plaza (Commons)

The Beyond Border's Plaza (BBP) is a student commons designed for student exchange, inbound and outbound study abroad support, and language learning, with one location on each of the three main RU campuses. Each BBP is composed of several different areas, including the Reading Space – a relatively quiet study area stocked with language education texts, books from overseas, comics and magazines; the Support Desk – where a special lecturer is stationed to provide students with advice; the Communication Rooms – where students can pick up a foreign language through conversation classes, and which can be rented by students for private group study; and the Commons Space – where international exchange events and activities are held.



The BBP provides student services such as the Communication Room language classes, help at the Support Desk, intercultural advising, events and so on. See the website for further info. Due to COVID-19 online cultural exchanges have become very active as of late, so please check our SNS for upcoming events! !

**[BBP Website]** <http://www.ritsumei.ac.jp/bbp/>



## PICK UP Employment situation

In Japan, most students decide their post-graduation career path while still in college/graduate school. Job-hunting in Japan usually begins when students are in their third year of undergraduate studies or first year of their master's program.

For international students with a resident status of "Student," job hunting is only permitted up until their graduation. The best tip for successful job hunting in Japan is to develop your Japanese language proficiency as much as possible and develop a deep understanding of Japanese culture while in college/graduate school. It is common even for foreign owned corporations in Japan to require you to have a certain Japanese language level since their customers are mainly Japanese.

We encourage you to discover your future career path during your college life and utilize all the support provided by the Career Center. The Ritsumeikan University Career Center provides career support services, especially for international students seeking employment in Japan.

### ✓ Graduate student employment rate **97.6%**

\*Those who sought a job and were assured an employment opportunity in FY 2020.

### ✓ Career center provides a wide range of support for job-hunting for International students.

- Career guidance sessions (English and Japanese)
- On-campus/online Job fairs (English and Japanese)
- ☞ Other events: Entry sheet (Resume) writing work shop (Japanese), individual career counseling (English and Japanese) etc.

### ✓ FY2019-2020<Major employers recruiting international students in Japan>

Accenture Japan Ltd, Amazon Japan G.K., BANDAI CO., LTD., CAPCOM CO., LTD., FUJITSU LIMITED, Hitachi, Ltd., IBM Japan Ltd, KANEKA CORPORATION, KEYENCE CORPORATION, MUFG Bank, Ltd., Nissan Motor Co., Ltd., Panasonic Corporation, Rakuten Group, Inc., SoftBank Corp. etc.





# Graduate School of International Relations (GSIR)

Global International Relations Program / International Relations Program (Master's Program)



## Outline

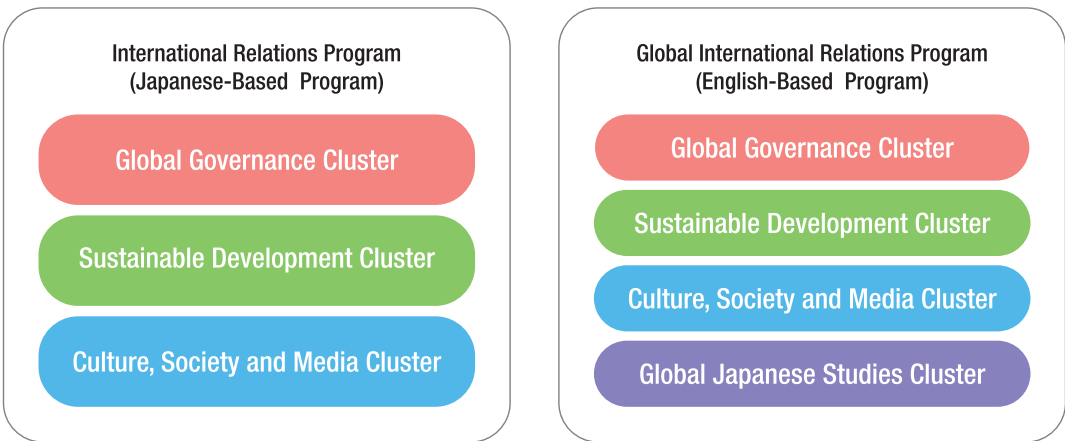
We are living in a connected world which faces a growing number of global issues; these are issues that no single state can cope with alone. The global pandemic, climate change, refugees and migration, terrorism, and natural disaster are all global issues that require dialogue and close cooperation between various national and international actors. Our Master of International Relations degree is designed to train future leaders, who are equipped with the skills and expertise to address pressing global challenges which cut across politics, economic development, culture, and society.

## Features

- We offer an unique interdisciplinary program that links politics, economics, media and culture with a global perspective.
- We embrace a diverse group of students from over 30 countries.
- We are located in Kyoto, voted the world's best city to visit by Travel + Leisure magazine.

## Program

### Courses offered in Japanese / Courses offered in English



The GSIR's Master of Arts in International Relations program is designed to offer two programs, in Japanese and English.

\* Admitted students are affiliated only with their program and not with any particular cluster.

\* Students may take courses from any cluster.

\* Not all courses are offered every year. Please confirm the exact information at the orientation after enrollment.

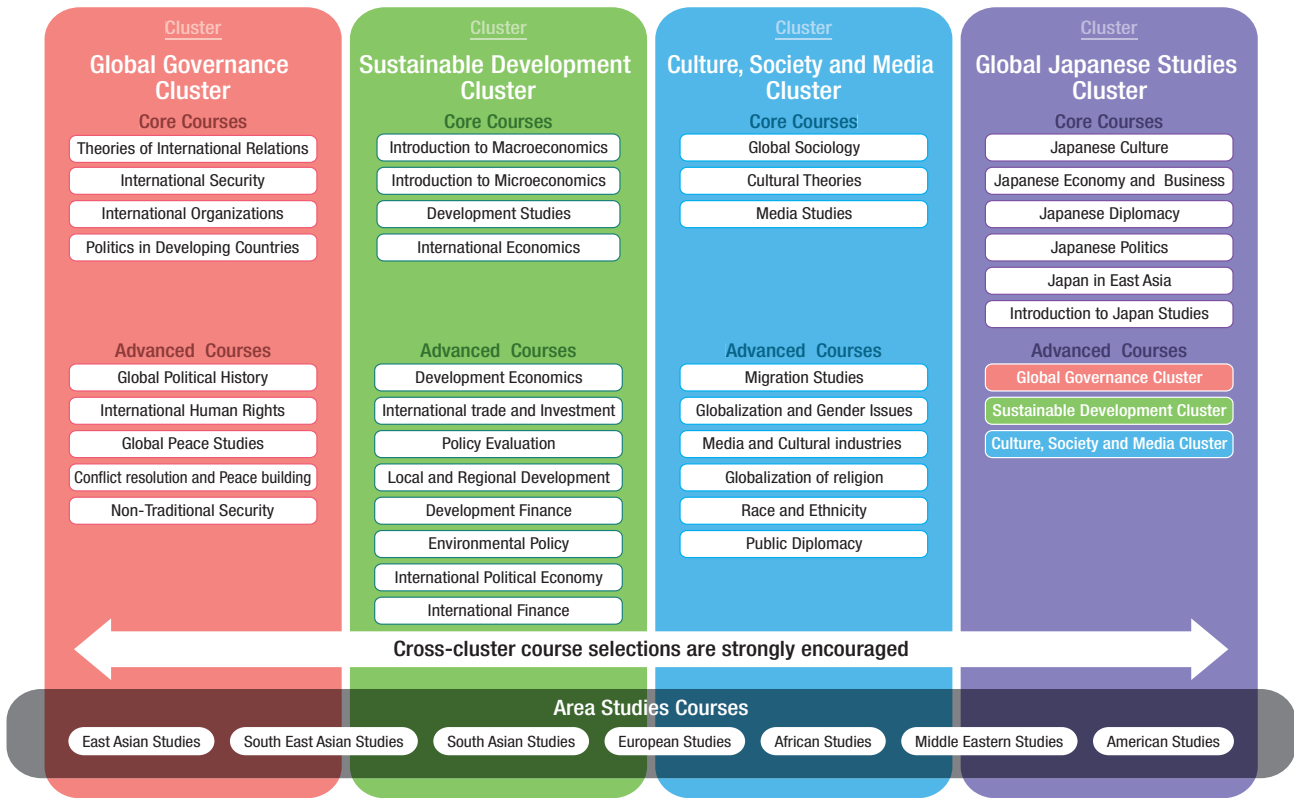
## Support for individual Research (Master's Thesis)

Students receive comments and feedback from professors at the regular presentations prior to the submission of their Master's thesis. Student questionnaires show a high degree of satisfaction with our guidance.

## Curriculum

\*Please see our website for more details.

### Global International Relations Program (English-Based Program)



## Academic Advisors for Global IR Program (English-Based Program)

Professors	Subject of Research
ADACHI, Kenki	International Politics, Disarmament and Arms Control, Global Governance, Civil Society
AMEKAWA, Yuichiro	Development Studies, Environmental Studies, Social development, sociology of agriculture/environmental sociology, Area studies (Southeast Asia, especially Thailand)
ATAKA, Hiroaki	Critical International Relations Theory, International political Economy
CHEUNG, Yukman	Cultural-Historical Sociology, Nationalism, Urban Sociology, Japanese Studies, Japanese subcultures (anime), Hong Kong Studies
DANISMAN, Idris	Religion and International Relations, Islamic Thought, Turkish Studies, Middle Eastern Studies, Multiculturalism
FRENCH, Thomas William	Japanese History, Japanese Politics, History of US-Japan Relations, History of UK-Japan Relations
FUKUMI, Sayaka	International Relations, Non-Traditional Security Threats
HAYASHI, Daisuke	Political economy, Environmental policy, Climate policy, Energy policy
HIRONO, Miwa	China's International Relations, Security Studies
HONNA, Jun	Comparative Politics, Southeast Asian Studies
ISHIKAWA, Sachiko	International development cooperation theory, Conflict and peace studies, Regional studies (Southeast Asia, ASEAN)
ITAKI, Masahiko	International Economy, International Surplus Capital
IWATA, Takuo	Comparative Politics, African Studies
KAWAMURA, Satoko	International Relations (Governance of Advanced Technology, International Thought), International Administration, The Law of International Relations
KIMIJIMA, Akihiko	Constitutional Law, Peace Studies
KOGA-BROWES, Scott Philammon	Media Studies, Visual Semiotic Analysis of TV News
MASUDA, Minoru	International History, History of British Politics and Diplomacy
MATSUDA, Masahiko	Agriculture and Rural Development, Area Studies (Southeast Asia, Myanmar)
NAKATO, Sachio	IR(International Relations)/IPE(International Political Economy)
NAKATSUJI, Keiji	International History, International Relations in Asia-Pacific
OCHI, Megumi	International law, international criminal justice
OHTA, Hideaki	International Finance, International Economics, International Development Finance, Development Macroeconomics, Regional/Global Economies
OYAMA, Shinji	Cultural Studies, Media studies, Creative/Cultural Industries Studies: Critical Brand Studies
RAJKAI, Zsombor Tibor	Social and Cultural Studies, Modernization of Non-Western Societies, Family Studies
SHIMADA, Haruyuki	International Development and Cooperation, Development Economics, International Relations, Area Study (South and South East Asia)
SHIRATO, Keiichi	International Journalism, African Area Studies
SMITH, Nathaniel M.	Cultural Anthropology: Far Right Political Activism, Urban Studies, Japan Studies
SONODA, Setsuko	History, Area Studies, Overseas Chinese Studies, Modern Chinese History
SUECHIKA, Kota	Middle Eastern and Islamic Studies, International Relations, Comparative Politics
TOKUMARU, Hiroshi	Monetary Economics, International Finance
TORIYAMA, Junko	Gender Studies, Gender Studies on the Middle East, Cultural Anthropology
TSUJIMOTO, Toshiko	Transnational Sociology, Studies on International Migration and Gender, Philippine Studies
UEMATSU, Hiroki	Development Economics, Poverty and Inequality, Sustainable Development, International Cooperation
WATANABE, Hiroaki Richard	International Relations, Comparative Political Economy (East Asia/Asia-Pacific, Europe, USA)
WATANABE, Matsuo	Economic Development, African Economies, West Balkan Study (Bosnia and Herzegovina)
YANE, Haruka	International Economics, International Trade and Labor, Economic Policies





# Graduate School of Economics

Master's Program in Economic Development (MPED) / Doctoral Program



Nurturing knowledge professionals with a base in economics

## Outline

Since its establishment in 1950, the Graduate School of Economics has produced many outstanding graduates who have entered the business world, central and local governments, and various research organizations. Located near Lake Biwa, the largest lake in Japan, the campus offers a beautiful natural environment along with the highest level of facilities and equipment. The faculty of Economic has nurtured as much as 50,000 students with independence and ability in business. We feel proud that we kept a prominent position among a lot of graduate schools and faculties of economics in Japan in terms of quality of education and research.

## Features of Program

### Master's Program

The school has offered the program for international students in English since 2001. These have proved popular with international students who enjoy taking courses in English in a Japanese academic environment, while working with their academic advisors on the writing and submission of their theses. The Master's Program in Economic Development (MPED) starting from September 2002 is a course in fundamental economic theory such as Microeconomics, Macroeconomics and Econometrics and applied economics, conforming to international standards and taught entirely in English. This course accepts students with strong interest in Japan and the Asian regional development from developing and developed countries, and will foster researchers - who have acquired specialized knowledge along with a strong sense of reality - and highly specialized professionals who can lead the international community. The aim of this program is to nurture talented individuals with wide-ranging discernment who can become leading figures in international society (in whichever field).

### Doctral Program

In the Doctoral Program, which was established in 1964, researchers acquire a broad perspective, higher specialization in knowledge and skills, and a superior capacity to independently pioneer new spheres of research. As a result, this program has produced a large number of talented individuals who are working for a wide range of universities and research institutions.



## Program Structure

### Master's Program in Economic Development

**Degree Requirements** Students must acquire 30 credits in the two years, including:  
•4 credits from Core courses.  
•4 credits from Elementary Seminars I and II in the first year.  
•4 credits from Special Seminars I and II in the second year.  
(Special Seminar is the individual thesis instruction by supervisor.)



### Type of Courses

	First Year	Second Year
Course Work	Core Courses Microeconomics I Microeconomics II Macroeconomics I Macroeconomics II Econometrics I Econometrics II	
	Elective Courses Development Economics International Economics International Finance Financial Economics Topics in Economics	Japanese Economy Public Policy Environmental Economics Internship Program Applied Economics
Thesis; Elementary Seminars Special Seminars Research Seminars	Elementary Seminar I Elementary Seminar II	Special Seminar I Special Seminar II Research Seminar I Research Seminar II
Learning in Practice	Open Seminar, Workshop, Fieldwork, Study Tour	

### Program Schedule

First Academic Year	
September February – March April	Entrance Ceremony, Fall Semester Begins Spring Break / Winter Intensive Course Submission of Research Plan
April June August – September	Spring Semester Begins / Health Examination Announcement of Supervisor and Sub-supervisor Summer Break / Summer Intensive Course
Second Academic Year	
September January January – March February – March	Fall Semester Begins Interim Presentation Submission of Special Seminar Report Spring Break / Winter Intensive Course
April July July August August – September September	Spring Semester Begins / Health Examination Final Presentation Submission of Master's Thesis Oral Examination of Master's Thesis Summer Break Commencement Ceremony

### Doctoral Program

**Degree Requirements** •Enroll for more than 3 years.  
•Earn 12 credits or more including Research Seminar I ~IV.  
•Submit a doctoral dissertation. Submitted dissertation must pass the Dissertation Review by Graduate School of Economics.

## Faculty members

Name	Field of Research, Subject of Research, Research Theme etc.
AONO, Kohei	•Empirical Study on Japanese Stock Market Empirical Analyses on the Impacts of Unconventional Monetary Policy
GOKAN, Yoichi	•Endogenous business cycle theory: in determinativeness and branch theory
GOMBI, Ichiro	•A Theoretical Study on Determination of Exchange Rate and International Balance of Payments
HARIMAYA, Kozo	•Empirical analysis of financial institutions and financial markets •Empirical analysis of the effects of industrial policy
HAYASHI, Hiroaki	•Comparative Study on Socio-economic Problems of Transition Countries
HORI, Kazumi	•Contract Theory •Organizational Economics •Applied Microeconomic Theory
ICHINO, Yasukazu	•Diversity and international trade •Gains from trade •Flipped classroom in teaching economics
INASAWA, Izumi	•International Comparative Analysis of Policy Making Process in Energy / Environmental Sectors
KAKINAKA, Makoto	•Public Policy •Financial Systems •International Economics
KAWAGISHI, Taketo	•Macroeconomic Theory •Economic Growth Theory •Dynamic Macroeconomic Analysis
KINOKUNI, Hiroshi	•Industrial Organization •A Theoretical Study on Durable Goods Monopoly
KOBAYASHI, Mizuki	•Automobile industry •Relationship between automobile companies and suppliers
KURIHARA, Yukiko	•Micro data Analysis Based on Secondary Utilization of Official Statistics
KUROKAWA, Kiyoto	•Regional Development Economics. •Private sector development study in developing countries. •Economic Resilience
LEE, Kangkook	•Macroeconomics of inequality and economic growth •Financial development, financial globalization and income distribution
MASWANA, Jean-Claude	•Development theories and policies •Trade and Sustainable Development •Asia-Africa's Economic Interactions
MATSUMOTO, Akira	•Study on systematizing of the international economics with the international value theory as the key concept
MINETOSHI, Chiho	•Tourism Economics •Tourism Education •Conservation and Inheritance of Regional Resources
MOMOTA, Akira	•Economic growth theory •A theoretical study on macroeconomic dynamics under low fertility and aging societies
NAKAMOTO, Satoru	•Political economics analysis of the contemporary U.S. economy •Study of shift towards service economy
NIIGATA, Atsushi	•Financial market analysis •Impact of Information and Communication Technology (ICT) on finance •Financial industry analysis
NITTA, Kohei	•Experimental Economics and Behavioral Economics •Research on Social Norms •Layered Public Goods Game
NOMURA, Ryoichi	•Strategic Trade Policy •International Trade Theory
ODAMAKI, Tomoko	•Social Policy •Co-production of Welfare Services
OHNO, Atsushi	•International Political Economy •Fair Trade and Ethical Consumption •WTO and Development Policy
OKAWA, Masayuki	•Study on the Theory of International Trade Theory under Imperfect Competition
OSHIO, Ryohei	•European Economic History •Socioeconomic history of performing arts and theatre in Vienna •Socioeconomic history in modern Austria
QIN, Jie	•Financial Economics •Behavioral Finance •Market Microstructure •Emotion and decision making
SANO, Sayaka	•Rural economy •Development economics •Economics policy (Agricultural policy) •Agribusiness and Cooperatavies in Brazil
SASAO, Toshiaki	•Environmental Economics •Economic Analysis of Waste Management and Circular Economy
SATOH, Takashi	•Marxian Economic Theory •Theory of Capital •The Theory of Capitalist Economy
SEKI, Mai	•Labor economics •Economics of education •Development economics •Applied microeconometrics
SHEN, XUEMEI	•General equilibrium model •Global value chain •Input-output analysis •Public finance
SHIMADA, Koji	•Energy Consumption Behavioral change using pricing and nudge •Renewable energy policy and market evolution
SUGITA, Nobuki	•Economic Policy of Japan •Measurement of Income Disparity •Regional Development Policy
SUSA, Taiki	•Public Economics •Political Economics •Intergovernmental fiscal competition under globalization and effects on political process
TAKEUCHI, Ai	•Institutions to raise and sustain cooperation •Effects of information on behavior
TERAWAKI, Taku	•Economic valuation of non-market goods with stated preference approaches
TOKUMARU, Natsuka	•Economic Philosophy •Experimental Economics •Micro-behavioral Theory of System and Ethics
YAMAI, Toshiaki	•Modern European social economic history centered on 19th and 20th century Germany
YOSHIOKA, Shinji	•Business cycle in Japan, and applying for development economics, and policy analysis in general

For details about researchers, please visit the website ▶ researcher's db ritsumei 🔍





# Graduate School of Science and Engineering

International Program for Science and Engineering (Master's and Doctoral Program)

Powering the Future -The Structure of the Future-

## Outline

To train researchers and professionals to possess not only a high level of theory and skills in the specialized fields of science and engineering, but also the ability to make creative discoveries.

The society of the 21st century becomes more diverse and complex, expecting towards graduate education in science and engineering to be greater than ever before. Furthermore, we now must think about technology in terms of its potential contributions to a sustainable global society. In order to meet these requirements, we offer diverse programs: Advanced Mathematics and Physics, Advanced Electrical, Electronic and Computer Systems, Advanced Mechanical Engineering and Robotics, and Advanced Architectural, Environmental and Civil Engineering. Our graduate school is staffed with professors who are capable of fulfilling our educational philosophy, and well-equipped with facilities such as laboratories that satisfy all essential requirements for advancing education and research.

## Curriculum

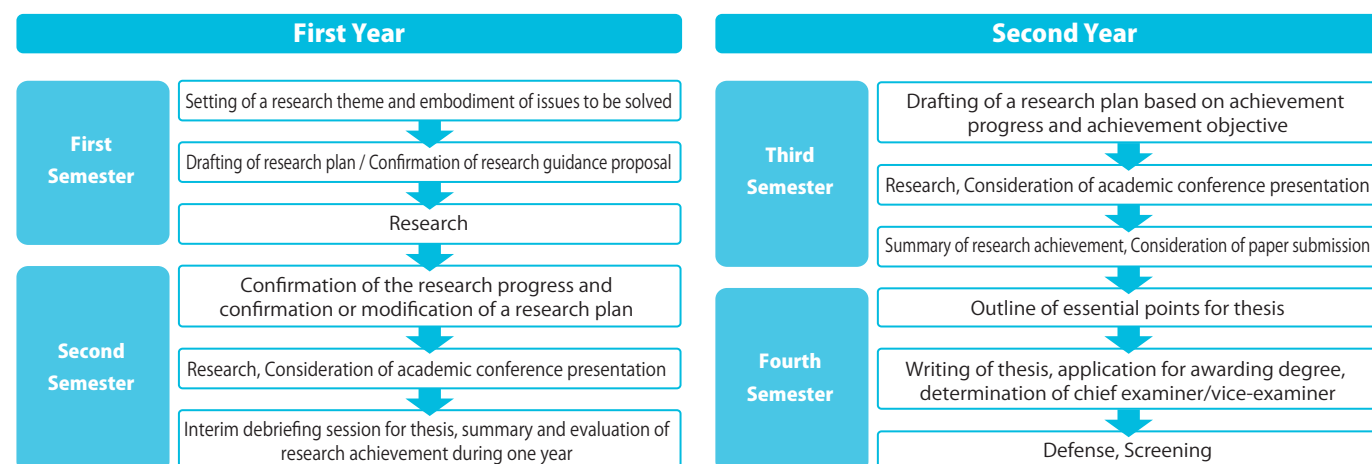
### Master's Degree Program < Standard Period of Study: 2 years>

- Students must gain 30 credits and hand in a Master's thesis.
- Not less than 4 credits from Common Subjects must be acquired
- Not less than 10 credits from Major Subjects must be acquired
- 16 credits from Research Subjects must be acquired

### Doctoral Degree Program < Standard Period of Study: 3 years>

- Students must gain 8 credits and hand in a Doctoral dissertation.
- 8 credits from Research Subjects must be acquired

## A Model of Research Flowchart in Master's Degree Program



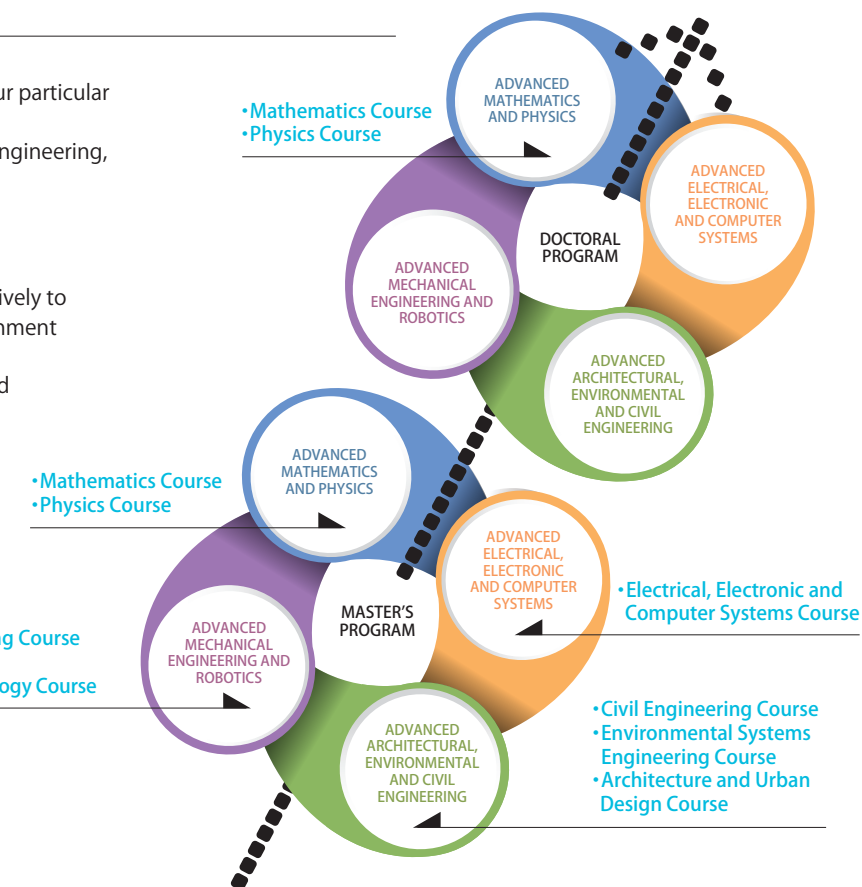
For details, please visit the website ▶ [ritsumeigssse](#)



## Program Features and Courses

- All courses and research supervision in English
- Opportunity to receive focused supervision on your particular field of interest
- 4 degrees available: Master of Science, Master of Engineering, Doctor of Science, and Doctor of Engineering
- Practical result-oriented research to prepare you to excel in a leading field of technology
- Multinational faculties and students
- Learn how to express your research mission effectively to technical experts, industrial specialists, and government representatives
- Learn how to make use of acquired experience and skills to regional development

※At the Master's level, the Physics Course is only available for Japanese-based students.



## Past Research Topics

### Advanced Mathematics and Physics

#### Mathematics Course

- Chern-Simons theory and its applications
- Applications of Stochastic Calculus based on Hyperbolic Brownian Motion
- Numerical analysis for stochastic differential equations with irregular coefficients

#### Physics Course

- Indirect signature of Kaluza-Klein dark matter
- Electronic States of the First Order Ferrimagnet  $\text{ErCo}_2$  Studied by Polarization Dependent Hard X-Ray Photoemission Spectroscopy
- One Loop Analyses of Superstring Vacua on Asymmetric Orbifolds

### Advanced Electrical, Electronic and Computer Systems

- Efficient thermal analysis algorithm for Lithium ion battery modules
- Transient stability analysis of a multimachine power system using Lyapunov's second method
- Advanced Positioning Algorithms for Automotive Single Frequency Receivers Based on PPP/VPPP GR Models

### Advanced Mechanical Engineering and Robotics

#### Mechanical Engineering Course

- Investigation of Power Electricity of Small Propeller in Waste-water Pipe
- Design and Parametric Study of Micro Compressor for Micro Gas Turbine using Computational Fluid Dynamics
- Study on Deformation Behavior of Heterogeneous Structure Materials via Multi-Scale FEM Analysis

#### Robotics Course

- Design of an Under-Actuated Adaptive Prosthetic Finger
- Variable Configuration Stereo Using Two Unmanned Aerial Vehicles
- Mechanical Design and Control of Inflatable Robotic Arm

### Advanced Architectural, Environmental and Civil Engineering

#### Civil Engineering Course

- Study on Paste Dripping of Porous Concrete and New Evaluation Method for Fresh Porous Concrete
- Evaluation of Rebar Corrosion in RC using Acoustic Emission and Half-Cell Potential under Electrical Corrosion Test
- Effectiveness of Bike to School Policy for Junior High School Students in Blitar Municipality, East Java Province, Indonesia

#### Environmental Systems Engineering Course

- Exploring the Potential of 3D Printing for Building Houses in Nigeria and Brief Numerical Analysis of Lintels in 3D Printed Houses
- Assessment of Secondary Lead Reserves and Potential Lead Waste of Nations
- Exploring and Comparing the Quality of Public Transportation Services from Social Media: Case Study of Greater Jakarta

#### Architecture and Urban Design Course

- Development of a Sustainability Assessment Tool for Cities in Indonesia using the Analytic Hierarchy Process Method
- Architectural Heritage Preservation as a Tool for Sustaining the Architectural Identity
- Electrical Resistivity Measurement Based of Compressive Strength Control for High Fluidized Soil Improvement Construction



Find your potential supervisor

For details about researchers, please visit the website ▶ [researcher's db ritsumeig](#)





# Graduate School of Information Science and Engineering (GSISE)

Promoting Education and Research in Cutting Edge IT

\* GSISE will be relocated to Osaka Ibaraki Campus in April 2024. See "Campus Relocation" on p. 08 for detail.

## Outline

International students can enroll in either Japanese or English-based curriculum of instruction. This program is designed to support engineers capable of actively participating in global-level careers.

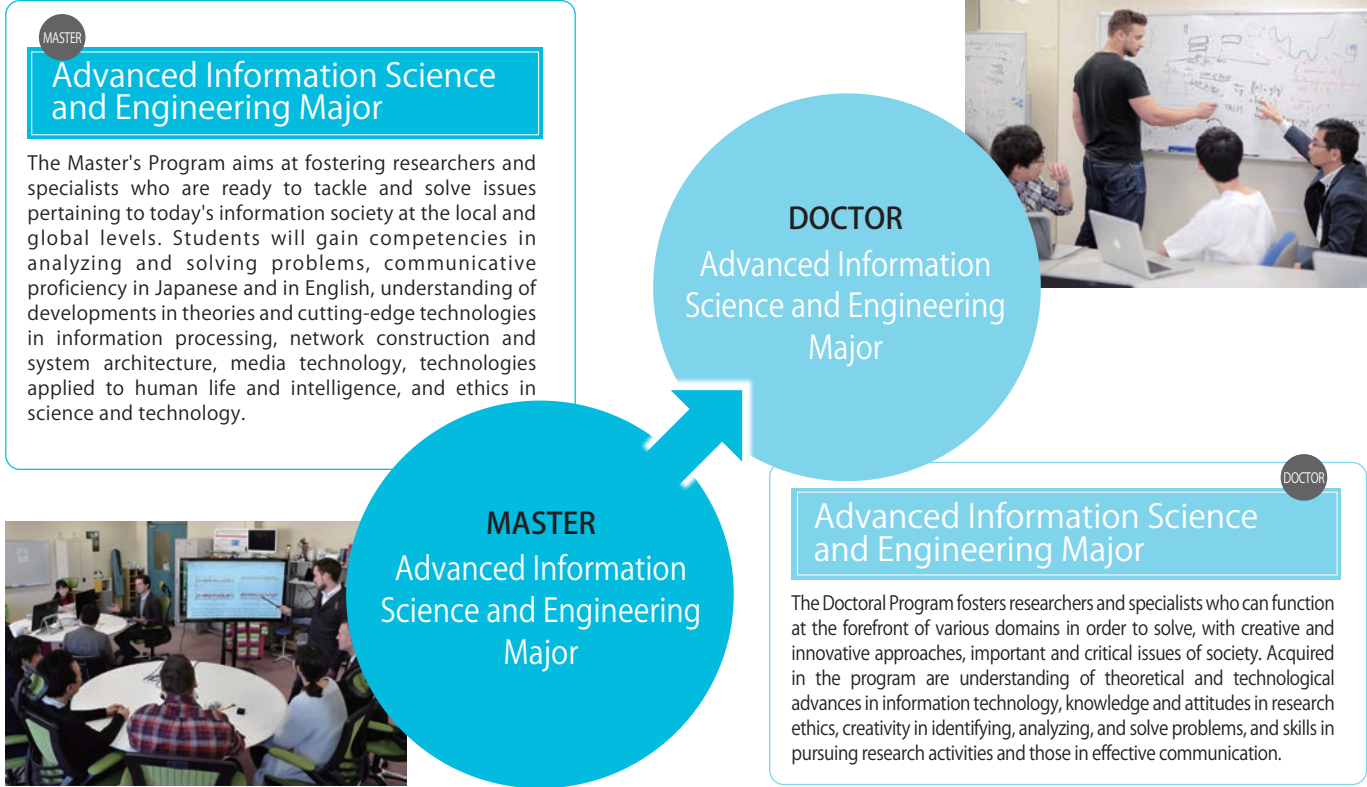
## Appeals of GSISE

### Professors Covering Various Fields

There are over 100 professors in our graduate school and our graduate school is one of the biggest graduate schools in IT field in Japan. Our professors cover a lot of research fields and have various research themes. Students can study under all of our professors in English. Our professors are also active in their research activities and obtain budgets from Japanese government for their unique research which its results boast to the world. That makes students study based on the latest research achievements.

### Countries of International Students from 2012

China, Vietnam, Thailand, Indonesia, Korea, Myanmar, Saudi Arabia, Mexico, Malaysia, USA, Cote d'Ivoire, Pakistan, Hungary, Bangladesh, Morocco, Rwanda, Russia, Uzbekistan, South Africa, Philippines, India, Mongolia, Ukraine



## Curriculum

### Subjects in Master's Program

(extracted subjects from Special Major Subjects are shown below)

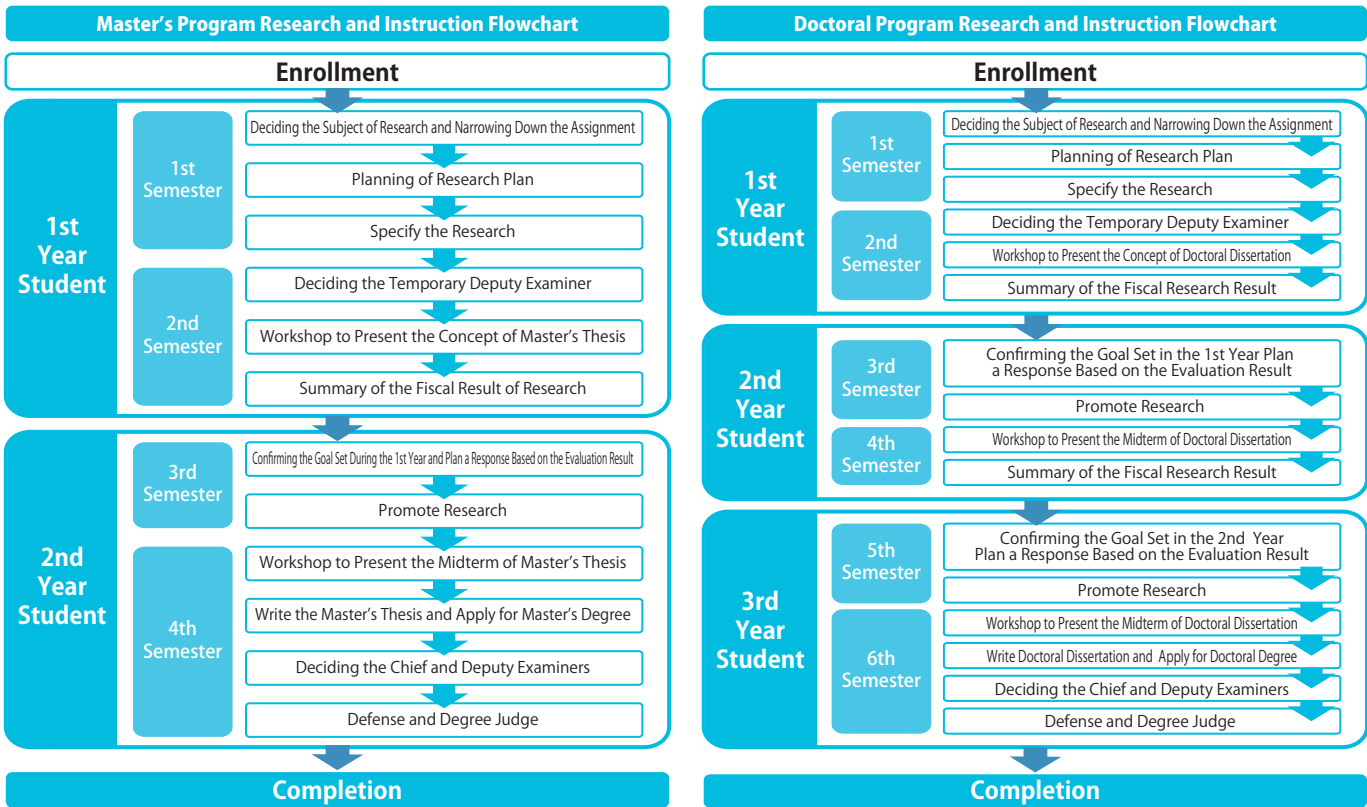
- Advanced Topics in Global Software Engineering
- Advanced Topics in Computer Science
- Advanced Topics in Communication Science
- Advanced Topics in Human Factors for Systems Engineering
- Advanced Topics in Computational Intelligence in Games

- Advanced Technology Management
- Advanced Topics in Image Processing
- Advanced Topics in Knowledge-based Systems
- Research for Master in Information Science and Engineering 1 ~ 4

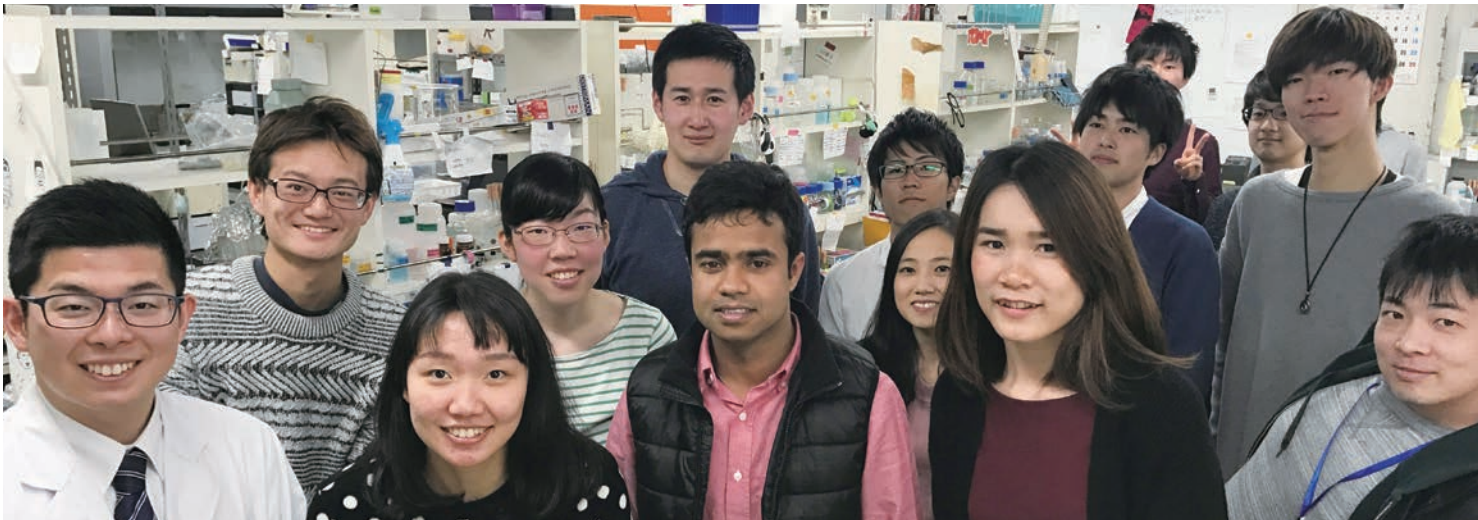
### Subjects in Doctoral Program

- (Special Research Subjects)
- Research for Doctor in Information Science and Engineering 1 ~ 6

## Flow chart (M•D)







# Graduate School of Life Sciences (GSLS)

International Program for Life Sciences (Master's and Doctoral Program)

Cultivating human resources that can contribute to solve the challenges of all humankind in the 21st century



## Outline

The Graduate School of Life Sciences focuses on integrated and collaborative education in the life sciences where students can proactively study related fields while simultaneously deepening their understanding of their specialized area of study. We educate students and conduct research in the hope of cultivating individuals with a depth and breadth of knowledge who manifest independence and initiative. International students are accepted for all courses, which are taught in English. The program is designed to foster the acquisition of broad knowledge and specialized skills related to the life sciences.

## Research Topics of Faculty

### Applied Chemistry Course

- Synthesis and Physical Properties of Novel Organic Functional Materials
- Interpretation of Catalysis Reaction for Future Material Development
- Molecular Spectroscopic and Computational Studies on the Molecular Mechanism for Structural Formation and Changes of Biomolecules and the Related Molecules
- Developments of Novel High-Performance Photofunctional Materials Based on Physical Chemistry
- Design and Construction of Chemical Reaction Spaces Using Biomolecules
- Fabrication of Electronically and Electrooptically Functional Materials Through Synthesis and Assembly of Unexplored Molecules
- Elucidation of the Photochemical Dynamics by Femtosecond Pulse Laser Measurements and Quest for Application
- Development of Next Generation Rechargeable Battery Based on Solid Electrochemistry
- Redox Biochemistry
- Elucidation of Various Bioreactions at the Molecular Level and Construction of Their Model Systems
- Creating Future Polymer Materials by State-of-the-Art Nanotechnology
- Design of New Metal Complexes and Their Application to Transformation of Inert Molecules

### Biotechnology Course

- Molecular Mechanism of Biosynthesis and Degradation of Plant Glycans, Plant-Derived Biomass Resources
- Molecular Mechanisms of Plant Responses to Light
- Protection of Environment, Organic Agriculture, Function of Microorganism
- Structural Bioscience for Improvement of Nature Environment and Drug Design
- Clarification of Biological Roles of Glycans by Synthetic Molecular Probes
- Development of the Production System of Valuable Materials Using Enzymes and Fermentation
- Generation of Virus- and Viroid-Resistant Plants through Genome Editing
- Mechanism of Bacterial Metabolic Pathways
- Basic Research and Application of Protein Phase Separation in Biology

### Bioinformatics Course

- Analyze Tissue and Organ Function Based on the Accurate Cell Level Model
- Synthetic Biological Approaches to the Evolution of Photosynthesis: "Where does it come from? Where is it headed?"
- Molecular Mechanisms of Environmental Stresses Tolerance in Plants
- Understanding from Genome to Life System
- Elucidation and Application of Structure-Function Relationship of Bio-molecules
- How Photosynthetic Microorganisms Respond to Changes in Their Environment?
- Rhythms in Motion and Rhythms in Brain: Deciphering Neural Information Processing from Rhythm
- Mathematical Models for Understanding Life as Information Processing Machinery

### Biomedical Sciences Course

- Proteomic Study on the Diseases
- Dissecting the Process of Somatic Cell Reprogramming and Stem Cell Differentiation
- Study for Pathologic Elucidation and Treatment of Diabetes
- Actions of Herbal Drugs and Mechanisms Mediated by Natural Antisense Transcripts
- Remodeling of Neural Network Underlies Vigorous Adaptability of the Brain
- Roles of Protein Modifications in Biological Phenomena and Disease Onsets
- Health and Disease of Heart Rate Regulation and Therapeutic Applications
- Assessing the Value of Health Technologies and Supporting Policy Decision Making



## Program and Courses

### MASTER Major in Advanced Life Sciences

#### Applied Chemistry Course

Studying both theory and technology in chemistry at the molecular level, and exploring new materials, new energy sources, and new biomaterials.

- [Keywords]**
- New materials
  - Nanotechnology
  - Environmental analysis
  - Energy conversion
  - Functional materials

#### Bioinformatics Course

Studying both fundamentals of life science and information science, and exploring new frontiers in life sciences by combining those two perspectives at the molecular level.

- [Keywords]**
- System biology
  - Genome analysis
  - Information science
  - Bioinformatics

#### Biotechnology Course

Studying both theory and technology in biology at the molecular level, and exploring new frontiers in environmental technology, food technology, bio-resources, and energy technology.

- [Keywords]**
- Microorganisms
  - Bio-energy
  - Molecular biology
  - Environmental purification
  - Biological resources
  - Plant

#### Biomedical Sciences Course

Studying both the forefront of medical sciences and their fusion fields, and exploring new frontiers in life sciences, medical science and medical policy.

- [Keywords]**
- Genome medical chemistry
  - Tailor-made medicine
  - Gene therapy
  - Preventive health medicine

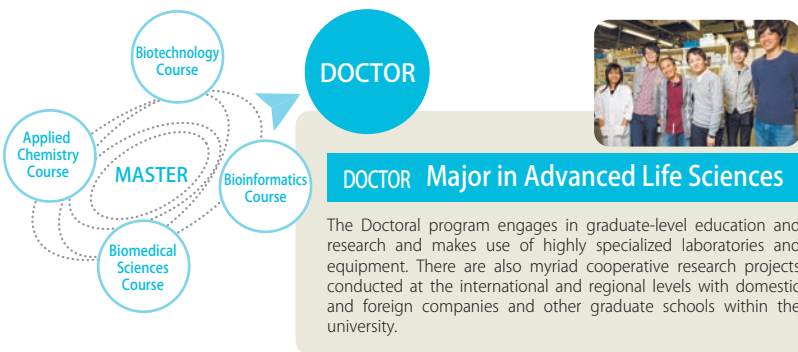
## Completion Requirements

### Master's Program

Category	Credits Required		Total
Common Subjects	Not less than 4 credits		Not less than 30 credits
Major Subjects	Core Subjects	Not less than 6 credits	
	Electives	Not less than 10 credits	
Research Subjects	16 credits		

### Doctoral Program

Category	Credits Required	Total
Major Subjects	-	Not less than 8 credits
Research Subjects	Not less than 8 credits	



## Student Voice

### Indonesia

#### ANDRIANI Furoida

Level of Study: Doctoral Program  
Course: Advanced Life Sciences



**Q** What is your favorite thing about Ritsumeikan University?  
**A** One thing I admire and am grateful to Ritsumeikan University for is its full support of international students. There are plenty of international students in Ritsumeikan University from all over the world, who surely face a lot of difficulties during their study in Japan. Nevertheless, Ritsumeikan University has a friendly community and is welcoming to international students. One support system for international students is the Beyond Border Plaza (BBP) that provides Japanese language and culture learning opportunities. They also frequently hold small events or parties for students to help international students and Japanese students connect.

### China

#### CHEN Yuhang

Level of Study: Master's Program  
Course: Bioinformatics Course



**Q** Were you worried about your new life at Ritsumeikan University before your arrival? If so, how did your worries change after arriving?  
**A** The most worrying thing was the language problem. Because my Japanese is not good, I was very worried about how to communicate with classmates, how to order meals in restaurants, how to communicate if I encounter problems, etc. The university provides Japanese classes to solve this problem. Although my Japanese does not yet allow me to communicate well, people around me are very friendly and patient. I believe that working hard at learning Japanese will solve these problems.

### China

#### WANG Xinjia

Level of Study: Doctoral Program  
Course: Advanced Life Sciences



**Q** How do you think your experience at Ritsumeikan University will help you achieve your goals?  
**A** The highest-level professors, the best research atmosphere, a full range of experimental equipment, and suitable lifestyle-facilities — everything is provided by Ritsumeikan University. These conditions will greatly improve my research ability and life for the better. I can use the advanced scientific knowledge I have learned at Ritsumeikan University to better contribute to the life sciences and medical undertakings in the future. Even though I know that my efforts don't amount to much, I would like to do such meaningful things. In addition, the most important thing is that I am learning a more serious attitude to deal with any work in the future.

### Bangladesh

#### MAJUMDER Toma Rani

Level of Study: Doctoral Program  
Course: Advanced Life Sciences



**Q** Why would you recommend studying at Ritsumeikan University to future students?  
**A** Ritsumeikan University is one of the top private universities in Japan and one of the country's largest. The international environment, high-quality education standards, strong research-oriented background, and research facilities, along with the number of scholarships it provides, are the top reasons to recommend this university. The career planning events and placement support systems for both Japanese and international students are very helpful for deciding future goals. Studying abroad is very challenging and exciting. I encourage everyone to try applying for an international graduate program at Ritsumeikan University.





# Graduate School of Policy Science

Master's Program / Doctoral Program

Building the ability to implement policies through direct interaction with society

## Outline

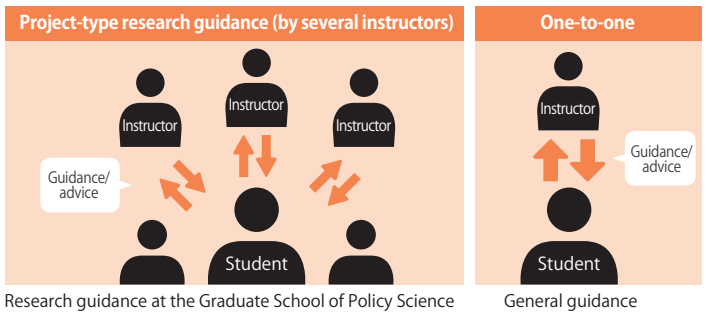
Policy science is a new discipline that involves interdisciplinary and practical studies. The curriculum of Graduate School of Policy Science (GSPS) is characterized by its "Research Project" program, which aims to open up intellectual spaces where faculty members of different specialties work with graduate students each of whom pursues different research themes. There, they are guided by their respective motivations to explore policy design to find solutions to policy issues that have taken place in real society, by constantly alternating between practical and basic theoretical approaches.

## "Research Project" and the Three Clusters, Characteristics of Policy Science



## Project-type research guidance to deal with policy issues

What is unique in our graduate school is "project-type" research guidance in which instructors from different expertise organize joint research teams and students participate in the joint research process within the group. The purpose of this Research Project is not just giving research guidance from one academic supervisor for one specific area, but rather several instructors who differ in their specialties with common interests in the area / theme of study collectively directing the students.

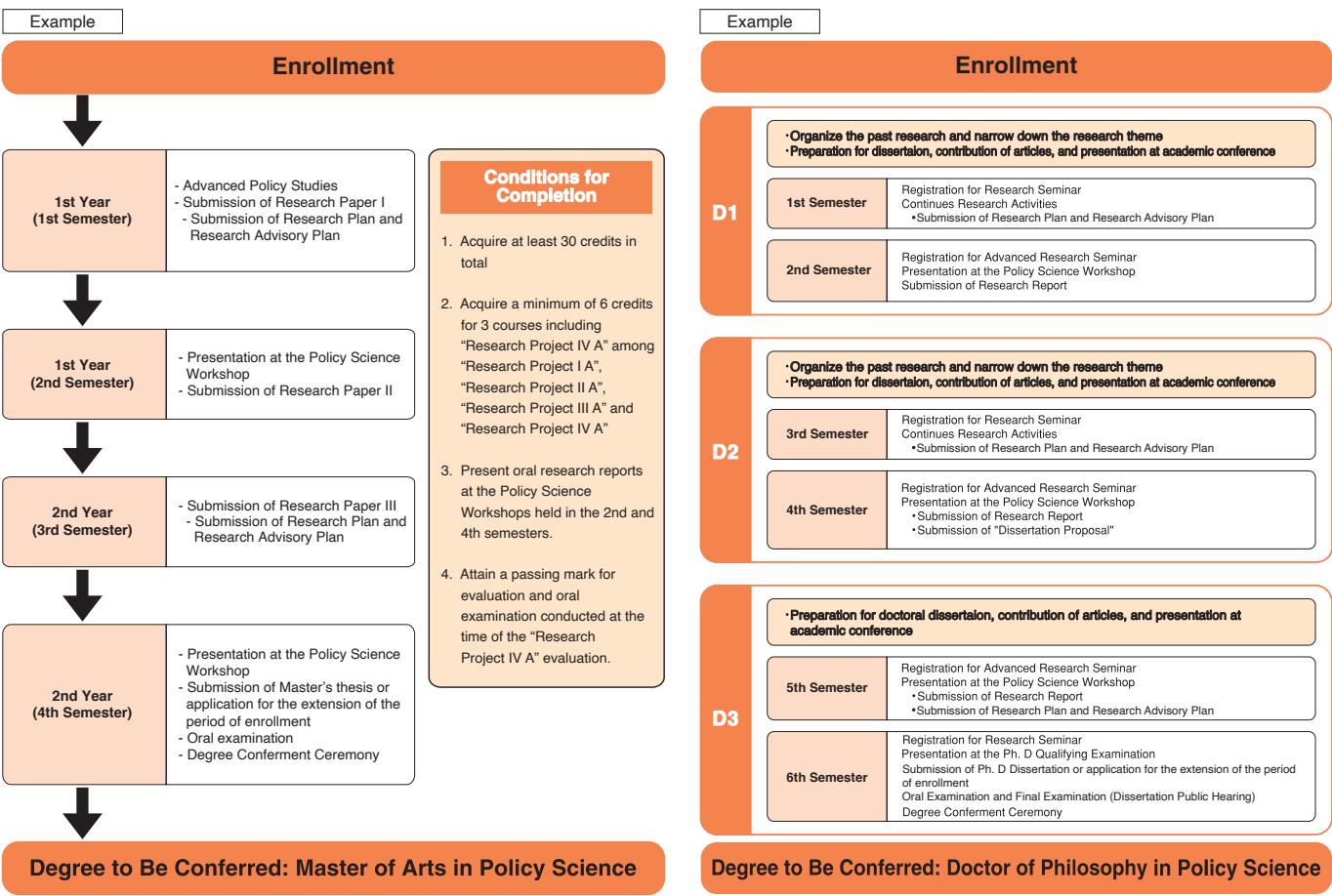


For details, please visit the website ▶ [ritsumei.gspg](http://ritsumei.gspg)

## Course Titles

- Policy Case Reading I (Studies in Culture and Public Policy)
  - Policy Case Reading I (Environmental Policy Analysis)
  - Policy Case Reading I (Local Governance)
  - Policy Case Reading I (Japan Studies)
  - Introduction to Public Policy
  - Introduction to Social Management
  - Introduction to Sustainable Development
  - Policy Case Reading II (Planning Science and Technology)
  - Policy Case Reading II (Social Welfare Policy)
  - Policy Case Reading II (Statistical Analysis for Policy Studies)
  - Policy Case Reading II (Japan Studies)
  - Policy Case Writing I
  - Policy Case Writing II
  - Participatory Case Research Analysis
  - Social Survey Data Archive Analysis
  - Policy Science Special Lecture (Technology Management I・II)
  - Advanced Policy Studies
  - Research Project I
  - Research Project II
  - Research Project III
  - Research Project IV
  - Regional Co-creation Study
- For developing field research and reporting skills ; a new field research subject with site visits will be launched in 2022.

## Research Project Guideline



## Master's Thesis Titles / Doctoral Dissertation Titles, and Faculty Members

Please access the links below for master's thesis, doctoral dissertation, and faculty members.

- 【Master's Thesis】** <http://www.ritsumei.ac.jp/gspg/eng/education/thesis/masters.html/>
- 【Doctoral Dissertation】** <http://www.ritsumei.ac.jp/gspg/eng/education/thesis/doctoral.html/>
- 【Faculty Members】** [http://research-db.ritsumei.ac.jp/scripts/websearch/gakubu.htm?DISP\\_KIND=1&lang=en](http://research-db.ritsumei.ac.jp/scripts/websearch/gakubu.htm?DISP_KIND=1&lang=en)

For details about researchers, please visit the website ▶ [researcher's.db.ritsumei](http://researcher's.db.ritsumei)





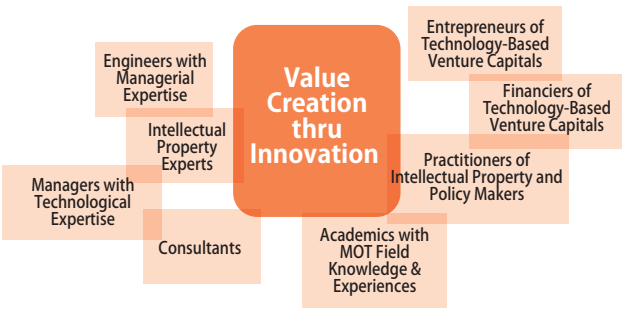
Graduate School of Technology Management

Master's program in Japanese / Doctoral program

Realizing new potential by bridging business with Technology

Outline

Management of Technology (MOT) concerns how firms to capitalize on technology. The relevant technologies in research involve a wide array of industries including automobile, electronics, telecommunication, energy, utility, and so on. MOT as a research discipline surpasses the technical realm of streamlining management. Along with the fields of R&D, operations management, corporate organization and finance, the curriculum of MOT also incorporates strategic management of technology, technology marketing, and innovation strategy. The Graduate School of Technology Management provides Master's Programs only in Japanese and Doctoral Programs in both Japanese and English for global career as well.



Program Overview and Features

	Master's Program	Doctoral Program
Degree	Master of Technology Management	Doctor of Philosophy in Technology Management
Language of Instruction	Japanese	English and Japanese
Enrollment Semester	April and September	April and September
Duration	2 Years	3 Years
Enrollment Capacity	70 Students	5 Students

The Graduate School of Technology Management (MOT) at Ritsumeikan is the only one of its kind in the Kansai region that develops talented young leaders at the Master's and Doctoral levels and gives them a foundation in the management and technology pillars as well as practical experience with leading Japanese enterprises. We offer weekday, evening, and weekend classes, bringing together students at all levels of academic and professional development from all over the world at Osaka Ibaraki Campus, to integrate a rich diversity of cultures and experiences into a unique educational environment that will prepare our students to become leaders on the international stage.



For details, please visit the website ▶ [ritsumeimoteng](#)



Research Field of MOT

For details about researchers, please visit the website ▶ [researcher's db ritsumeimot](#)

Strategic Management of Technology	This research field concerns the practice and theory of strategic decision-makings in technology management. A rich variety of business cases, contextualizing how, why, and when technology-driven innovations were realized, should be examined to comprehend the critical nature of technology management.
Technology Finance	Every innovation involves high risk and high return, and the main interest in this research field pertains to the strategic practice of financial management, including capital and asset management, technology evaluation, and corporate risk management in general.
Intellectual Property Management	This research field relates to managerial practice and theory of strategic intellectual properties. The key focus is placed on exploration, evaluation, protection, and exploitation of intellectual properties.
Technology Marketing, Roadmapping	Reading and shaping the future is the most strategic perspective in technology management. This research field embraces the practice of exploring both needs and seeds of innovation that would provide new technological foundations for competitive advantage.
Operation Management	Technology-driven innovation necessitates strategic design and management of value chains in operation. This research field aims to explore the essential theory and practice of data analysis and knowledge management to sustain competitive advantage in market.
Entrepreneurship and Innovation Enterprise	Every innovation derives from entrepreneurship. This research fields entails in-depth investigation of the essentials of innovative enterprises. A wide array of analyses should be conducted to enrich our understanding: new product development, finance, strategic alliances, customer relation management, regional development, and business history.
Human Resource Management	No technology will result in innovation without successful HRM. This research field looks comprehensively into how to manage vital human resources. Alongside the traditional perspectives of HRM, technology and innovation management requires in-depth analyses of corporate training and education systems for technologists, and of organizational design.
R&D Policy and Triple Helix	Innovation comprises more comprehensive phases of technological development and commercialization. Realization of more competitive R&D has become the key to corporate success and sustainable competitiveness. This demands more intensive Government-Industry-University alliances nowadays, and Triple Helix would facilitate innovations henceforth.

Recent Doctoral Dissertation Titles

- A Study on Chinese Short-Video Using Social Media Advertising Model
- An empirical study of the factors affecting customer satisfaction and intention to use food delivery apps before and during the COVID-19 in Thailand
- The Role of Innovation Policy and Science Communication in Accepting New Food Technology
- A Study of Nonaka's Wise Leader Practices and an Image of Leadership from the Perspective of Subordinates, to Promote Management Innovation Performance via Stimulating Employee's Knowledge Sharing Aspiration
- A System Dynamics Modelling for Healthcare Demand and Smartphone-based Technology Adoption in Malaysian Public Hospitals
- Analyses of inter-organizational collaboration for personalized medicine development, and organizational structure suitable for successful outcomes
- Exploring Knowledge Process and Organizational Culture to Promote Individual Learning: An Empirical Study in Science Museums
- Maximization of Energy Safety Using Neuro-Fuzzy Systems
- Alliance Management during Joint Development between Corporations -Investigation into important items when undertaking joint development and examination of a general-purpose model-
- Market Creation for Fuel Cell Electric Vehicles: Infrastructure Dependent New Products and Expectations
- Implicit Patent Alliance Acquiring the Appropriability of Innovation
- Exploratory research on collaboration: Approach to individual, organization and strategy
- Institutional study of the regional brand protection system in Japan
- Demonstration of design-driven innovation: Analysis of intellectual property information
- Technological Innovation System Building for Diffusion of Solar Energy Technology in Developing Countries: A Multilevel Analysis in Ethiopia



# Graduate School Courses Offered in Japanese

RU offers the following Graduate Degree Programs offered in Japanese

※M: Master's Program D: Doctoral Program

For details, please visit the website ▶ [ritsumeai academics graduate](#) 🔍

## Kinugasa Campus in KYOTO

### ■ Graduate School of Law (M/D)

Since its founding in 1950, the Graduate School of Law has produced many individuals outstanding in their fields, including research academics, complementing the over 100 years of tradition at the College of Law. The past few years have also seen the school achieve admirable results in cultivating highly specialized professionals, including lawyers and tax accountants.

- Four courses
  - The Legal Specialist Course—Cultivating specialists in areas requiring essential knowledge of the law.
  - The Public Administration Course—Developing specialized knowledge for professional work in the public sector.
  - The Law & Politics Research Course—Deepening academic involvement in the various issues of law and politics.
  - The Doctoral Research Course—Fostering future legal researchers.

### ■ Graduate School of Letters (M/D)

The Graduate School of Letters offers two majors comprising 14 programs. The school continues to build upon traditional literature studies developing new academic fields incorporating information technology.

- Two majors and 14 programs
  - A major in Humanities—Philosophy, Educational Anthropology, Japanese Literature, Chinese Literature, English and American Literature, Japanese History, East Asian History, European and American History, Cultural dynamics studies, Modern East Asian Languages and Cultures, Language and Area Studies of English Speaking Countries.
  - A major in Informatics of Behavior and Cultures—Geography, Digital Humanities for Arts and Cultures, Archaeology and Cultural Heritage.

### ■ Graduate School of Core Ethics and Frontier Sciences (Integrated Doctoral Program)

The Graduate School of Core Ethics and Frontier Science was established for the purpose of examining and seeking solutions to the problems that have been passed down to the 21st century and making approaches to common issues for all humanity from the four perspectives of Publicness, Life, Social-Cultural Symbiosis, and Representation, with an emphasis on core ethics. We adopt integrated doctoral program consisting of transversal lectures and exercises from different fields.

- Four field themes
  - Publicness—Publicness in the 21st century
  - Life—Life as an Issue
  - Social-Cultural Symbiosis—Possibilities and Limitations in Social-Cultural Symbiosis
  - Representation—Analysis of Culture and Art through Representative Theory

### ■ Graduate School of Sociology (M/D)

The Graduate School of Sociology was established in 1972 to promote a comprehensive understanding of an increasingly complex world and to tackle issues of modern society in collaboration with many sociological subfields, as well as social policy, social welfare, anthropology, and economic sociology.

- Four major research fields
  - Modern Society
    - This research field aims to provide students with opportunities and tools for sociological analysis and insight.
  - Human Welfare
    - This research field aims to enable students to engage with social issues in human development, welfare policy, and social work practice.
  - Sports & Society
    - This research field aims to enable students to analyze sports culture and the relation between sports and society.
  - Media & Society
    - This research field aims to enable students to analyze media culture and media society from various perspectives.

### ■ Graduate School of Image Arts (M)

The Graduate School of Image Arts leverages all the benefits of Ritsumeikan's organization as a comprehensive university to provide broad education, aiming to cultivate skills, techniques and analytical methodology related to visual image production (extending beyond the making of visual image products and including development and application) and visual image studies as well.

- Subject Zones
  - Film Arts
  - Game Entertainment
  - Creative Technology
  - Content Business Management
  - Society and Images

### ■ Graduate School of Language Education and Information Science (M)

The Graduate School of Language Education and Information Science offers a Master's degree in the study of language teaching, linguistics and communication studies.

- Two courses
  - The Language Education course consists of the English Language Education program and the Japanese Language Education program. Both aim to develop a high level of skill in prospective and practicing language teachers.
  - The Language Information and Communication course - The objective of the course is to develop deep understanding of students in various subdisciplines of linguistics.



## Biwako-Kusatsu Campus in SHIGA

### ■ Graduate School of Sport and Health Science (M/D)

The Graduate School of Sport and Health Science aims to foster highly-specialized professionals and researchers who have expertise in the field and advanced practical and leadership skills as well as the capacity to contribute to society. The school supports your research with top-level faculty and cutting-edge facilities and equipment.

- Two courses in the Master's program
  - Sport and Exercise Science—Focusing on education and research to analyze sports performance from a scientific approach and to elucidate the maintenance and furtherance of health based on scientific evidence.
  - Sport Pedagogy and Management—Focusing on education and research to improve student's educational and management abilities in the field of sport and health science.

### ■ Graduate School of Gastronomy Management (M/D)

The Graduate School of Gastronomy Management aims to rear a new generation of highly skilled professionals and researchers who possess practical managerial skills by research economic activities related to gastronomy using their expertise in economics and business administration.

- Three social priority issues
  - Management and innovation in the gastronomy industry
  - Creating a multicultural community through gastronomy
  - Welfare and health coordination through gastronomy

### ■ Graduate School of Pharmacy (M/D)

The Graduate School of Pharmacy consists of two majors: a four-year doctoral program in pharmacy, and a two-year master's program and a three-year doctoral program in pharmaceutical sciences.

- Two majors
  - Doctoral Program in Pharmacy — Aims to train pharmacists, medical personnel, and researchers who will contribute to advanced medical care as a leading role.
  - Master's Program and Doctoral Program in Pharmaceutical Sciences — Aim to deepen research in the field of drug discovery and to train researchers who will be engaged in the discovery and creation of new drugs.

## Suzaku Campus in KYOTO

### ■ School of Law (Juris Doctor Program)

The School of Law nurtures "Global-Citizen Lawyers" that think and act based on the global perspective and common sense. We educate students with various backgrounds to be the legal professions, each person who has rich humanity, a keen sense of human rights, and profound education with a global perspective and high-leveled specialties.

- Specialized subjects
  - Bankruptcy Law, Tax Law, Economic Law, Intellectual Property Law, Labor Law, Environmental Law, International Private Law and International Public Law

## Osaka Ibaraki Campus in OSAKA

### ■ Graduate School of Business Administration (M/D)

The Graduate School of Business Administration is a strong academic community that provides a solid practice ground for future business leaders and academic researchers. The school acknowledges the need to respond the tumultuous global market and increasingly globalized business competition. Our research consists of seven fields, each focusing on the global issues and the latest academic debates. The students will expand their research into practical business agenda, and are expected to become truly influential leaders of the future generation of business practice and management research.

- Seven research fields
  - Technology Management and Strategies, Organization and Human Resources, Marketing, International Business, Accounting, Finance, and Design and Management.

### ■ Graduate School of Human Science (M/D)

At the Graduate school of human science, a new academic research field will be established in 2022, called "Human science in practice", Faculty members and graduate students work together, to realize new academic fields of human science.

- New research fields
  - Psychology: To expand students' academic understanding, courses including cognitive psychology, developmental psychology, social psychology, and research methods are offered.
  - Human science in practice: Offering subjects that correspond to character formation and clinical education, analysis and disability and behavior family function and clinical sociology. In addition to the above, we are offering subjects based on putting Problem Based Learning into practice.
  - Clinical psychology: Offering subjects that correspond to the curriculum stipulated by the Japanese certification board for Clinical Psychology, our school is designated type I graduate school for Clinical Psychologists.

### ■ Graduate School of Management / MBA (M)

The Graduate School of Management aims to develop business leaders who can contribute to the sustainable development of Japan and the whole world through creating businesses. We offer two trucks based on students' previous work experience.

- Two trucks
  - Management Truck—Focusing on advanced management expertise needed to create and grow businesses, this truck aims to train those who have more than three years of work experience to become highly capable business leaders.
  - Career Development Truck—Focusing on basic business skills and mindsets, this truck prepares students with little or no work experience for their future career pathways.

### ■ Graduate School of Professional Teacher Education (Master of Education)

The Graduate School of Professional Teacher Education nurtures highly skilled teachers who have the ability to tackle issues that are getting more and more complicated at schools.

We aim to combine theoretical education and practical training and cooperate with not only our affiliated schools but also other schools in Kyoto, Shiga and Osaka where the University has its campuses so that we can provide unique programs associated with a series of fieldwork and a long-term internship to the students. The students will learn from various type of teachers, from experts in education study to instructors with experience of teaching, and are expected to acquire excellent skills required for teachers and school leaders. We offer 3 courses, 1) Clinical Research on Human Development and Education, 2) Educational Methods and Learning Sciences, and 3) International Education which propose the distinctive education of Ritsumeikan University.



# Application Information

## How to Apply

Ritsumeikan University releases application information approximately 1 year before admission.

**Step1. Find out more about the programs we offer by visiting our website.**

<http://en.ritsumei.ac.jp/admissions/>

**Step2. Obtain the guidelines and read carefully.**  
Contact the department in charge of your desired program of study.

**Applying for Pre-enrollment Scholarship Programs:** (Ex. Monbukagakusho, Asian Development Bank)

■ International Center at BKC: [cger-bkc@st.ritsumei.ac.jp](mailto:cger-bkc@st.ritsumei.ac.jp)

• Please check our site beginning from October 2022 for more information on how to apply for scholarships for the 2023 academic year.



**Applying as a Self-financed Student:**

- Graduate School of International Relations: [ir-adm@st.ritsumei.ac.jp](mailto:ir-adm@st.ritsumei.ac.jp)
- Graduate School of Economics: [gs-ec@st.ritsumei.ac.jp](mailto:gs-ec@st.ritsumei.ac.jp)
- Graduate School of Science and Engineering: [se-admw1@st.ritsumei.ac.jp](mailto:se-admw1@st.ritsumei.ac.jp)
- Graduate School of Information Science and Engineering: [gsise@st.ritsumei.ac.jp](mailto:gsise@st.ritsumei.ac.jp)
- Graduate School of Life Sciences: [gsls@st.ritsumei.ac.jp](mailto:gsls@st.ritsumei.ac.jp)
- Graduate School of Policy Science: [gspis-adm@st.ritsumei.ac.jp](mailto:gspis-adm@st.ritsumei.ac.jp)
- Graduate School of Technology Management: [moten@st.ritsumei.ac.jp](mailto:moten@st.ritsumei.ac.jp)



**Step3. Submit all application forms.**  
Send all your application documents during the application period.

**Sample list of required application materials (for a full list, please see the guidelines)**

- Application for graduate admission at RU • Letter of recommendation • Research proposal • Certificate of graduation
- A photocopy of applicant's passport information page • Proof of linguistic talent / practical expertise (TOEFL®test, TOEIC®test, etc)



## Frequently Asked Question

### Q1. What are the application requirements?

Requirements differ based on the graduate schools and their procedures. Please review the Application Guidelines of each graduate school and check the appropriate eligibility criteria mentioned in "Eligibility Requirements".

### Q2. What is the screening method like?

Screening is conducted mainly based on submitted materials. Written tests and / or interviews are also conducted in some graduate schools. Please refer to the Application Guidelines for details.

### Q3. How can I find my desired major and supervising professor?

RU has many graduate schools and research areas may be offered by one or more graduate schools. Prospective students are expected to find out which graduate school offers a program related to their area of research interest and decide from which faculty member they should receive supervision by checking the website for each graduate school or the laboratory of each faculty member before the application submission.

Research topics	Graduate school	Keyword
※This is only an example, and there may be other choices.  •Environment •Disaster prevention •Climate change	Graduate School of Science and Engineering	•Disaster mitigation •Water environmental engineering •Environmental influence assessment •Sustainable resource and waste management
	Graduate School of Policy Science	•Disaster prevention •Environmental Policy •Resource and environmental economics
	Graduate School of Economics	•Environmental economics
	Graduate School of Life Sciences	•Bioengineering

General information of each graduate school is available in the "Guidebook Brochure" or on the Ritsumeikan University website.

#### Guidebook Brochure

<http://www.ritsumei.ac.jp/gr/download/index.html/>



#### Ritsumeikan University website

<http://en.ritsumei.ac.jp/academics/>



You can also find a potential supervisor by entering keywords such as dissertation titles or research topics, in the "Ritsumeikan University Researcher Database" shown below.

#### Ritsumeikan University Researcher Database

<https://research-db.ritsumei.ac.jp/rithp/TOP?lang=en>



### Q4. Is it possible to directly contact the professor who I would like to be my supervisor?

You are able to contact faculty directly if they have made their email address available on the graduate school's website, Researcher's Database, etc.

### Q5. How can I obtain a student visa before coming to Japan for the first time?

The International Center will help international students who are entering Japan for the first time to obtain a student visa. Please ask the administrative office of your graduate school after passing the entrance examination.

### Q6. Is Japanese language ability required?

If you wish to enroll in the English-based program shown on pp. 16-29, Japanese language ability is not required. The entire program including lectures is conducted in English.

That being said, some knowledge of Japanese language will help you adjust to life in Japan. RU offers "Language Support Programs" to international graduate students. Please refer to p. 14.

(If you are interested in the Japanese-based program shown on pp. 30-31, Japanese language ability is necessary. See the Application Guidelines of each graduate school for details.)

#### More FAQs

<http://www.ritsumei.ac.jp/gr/en/faq/index.html/>

