

Crossroads

R i t s u m e i k a n

2021-2022

Ritsumeikan University

Ritsumeikan Asia Pacific University

Ritsumeikan Junior High School
Ritsumeikan Senior High School

Ritsumeikan Uji Junior High School
Ritsumeikan Uji Senior High School

Ritsumeikan Keisho Junior High School
Ritsumeikan Keisho Senior High School

Ritsumeikan Moriyama Junior High School
Ritsumeikan Moriyama Senior High School

Ritsumeikan Primary School

R The Ritsumeikan Trust Academy Overview

The Founding Spirit and Educational Ideals of the Ritsumeikan Academy

The Ritsumeikan Academy was founded in 1900 as the Kyoto Hosei School (Kyoto School of Law and Politics), an evening law school open to working people. The school was founded by Kojuro Nakagawa, former secretary to Prince Kinmochi Saionji, liberal statesman of late 19th and early 20th Century Japan. With Saionji's blessing, the name was changed to Ritsumeikan Private University in 1913. The university established itself upon the spirit of "freedom and innovation" and set "peace and democracy" as its core educational philosophy.

The Ritsumeikan Academy has now become an integrated academy with a rich culture of individuality and international awareness accommodating a total of approximately 50,000 students. The current Ritsumeikan Academy has campuses in Hokkaido, Shiga, Kyoto, Osaka, and Oita and encompasses two universities, four high schools, four junior high schools, and one primary school. Since Ritsumeikan's establishment, approximately 410,000 students have graduated from Ritsumeikan University and 20,000 from Ritsumeikan Asia Pacific University (APU). The Ritsumeikan Academy fosters learning and the development of individual talents in order to nurture just and ethical global citizens.



Tomomi Morishima
Chairperson of the Board of Trustees
The Ritsumeikan Trust



Yoshio Nakatani Ph.D.
Chancellor of The Ritsumeikan Trust
President of Ritsumeikan University



Ritsumeikan
Suzaku Campus



Ritsumeikan University
Kinugasa Campus



Ritsumeikan University
Biwako-Kusatsu Campus



Ritsumeikan University
Osaka Ibaraki Campus



Ritsumeikan
Asia Pacific University (APU)



Ritsumeikan
Junior High School
Ritsumeikan
Senior High School



Ritsumeikan Uji
Junior High School
Ritsumeikan Uji
Senior High School



Ritsumeikan Keisho
Junior High School
Ritsumeikan Keisho
Senior High School



Ritsumeikan Moriyama
Junior High School
Ritsumeikan Moriyama
Senior High School



Ritsumeikan
Primary School

The Ritsumeikan Charter

The Ritsumeikan Trust has formulated "The Ritsumeikan Charter" as follows in order to share the ideals and mission of Ritsumeikan among all of its members and to disseminate them throughout the world.

The Ritsumeikan Trust
July 21, 2006

The Ritsumeikan Charter

Ritsumeikan traces its roots to Prince Saionji's private academy of the same name, established in 1869. It was officially founded in 1900 by his protégé, Kojuro Nakagawa, as the *Kyoto Hosei Gakko* (Kyoto School of Law and Politics), later to take on the name "Ritsumeikan." The name is derived from a passage in the *Jinxin* chapter of the *Discourses of Mencius*, and means "a place to establish one's destiny through cultivating one's mind."

Ritsumeikan's founding ideals are "freedom and innovation" and reflecting upon its wartime experience, it committed itself to a core educational philosophy of "peace and democracy" after World War II.

Ritsumeikan has faced the challenges of the times by pursuing an independent path to rise above adversity and has become the comprehensive private educational institution that it is today through extensive cooperation and support from both within and outside Japan.

Ritsumeikan, as a Japanese institution located in the Asia Pacific region, is committed to sincerely reflecting upon history and to building an institution where many cultures coexist in the spirit of international mutual understanding.

Ritsumeikan will build relationships of trust, through research and education, as well as sports and cultural activities, and establish its roots in the local community, to create an academic institution open to international society.

Ritsumeikan will strive to strengthen links with society and promote its institutional development by fully utilizing the characteristics of a private academic institution, the participation of its faculty, staff and students, and the support of alumni and parents, while respecting the principles of autonomy, democracy, transparency, non-violence and justice.

Ritsumeikan will pursue the creation of universal values based on academic freedom and search for solutions to the pressing issues facing humankind, with its educational endeavors based on its founding spirit and educational ideals, bearing in mind "to believe in the future, to live for the future".

Ritsumeikan will foster learning and the development of individual talents in order to nurture just and ethical global citizens.

Ritsumeikan, as an institute of education and research, pledges to promote peace, democracy and sustainable development in Japan and throughout the world, in keeping with the spirit of this Charter.

Futurize.

きみの意志が、未来。

* The meaning of "きみの意志が、未来。": In a world where there are no right answers, it is important that everyone is exposed to a variety of challenges originating from their respective personalities and values. New and unprecedented value is created when these various challenges come in contact with each other. This sub-copy was added to further develop the culture of respect for diversity that has been nurtured at Ritsumeikan to date and to encourage students, faculty, and staff to tackle challenges with an eye on the future.

R The History of Ritsumeikan

The Founding Spirit and Educational Philosophy of Ritsumeikan

The history of Ritsumeikan dates back to 1869 when Prince Kinmochi Saionji, an eminent international statesman of modern Japan, founded "Ritsumeikan" as a private academy on the site of the Kyoto Imperial Palace. In 1900, Kojuro Nakagawa, former secretary of Prince Saionji, established Kyoto Hosei School (Kyoto School of Law and Politics), an evening law school that was open to working people. This school formally adopted the name Ritsumeikan in 1913 and was finally given the status of a university in 1922.



Kinmochi Saionji
(1849-1940)



Kojuro Nakagawa
(1866-1944)

The school spirit of liberalism and internationalism advocated by Prince Saionji was combined with the ideals of academic freedom and vivacity pursued by Kojuro Nakagawa, and became a tradition of the university. This tradition also survived the intense suppression of the prewar days, as evidenced by the fact that Ritsumeikan University accepted seventeen professors who were forced by the government to leave Kyoto Imperial University (present-day Kyoto University) for their pacifist activities.

After World War II, Ritsumeikan adopted the educational philosophy of peace and democracy, faithful to the spirit of the Japanese Constitution and the Education Fundamental Law. In 1948, Ritsumeikan became one of the first Japanese universities to be reorganized under the new education system. Ritsumeikan carried out extensive reforms to ensure democratic administration of the university to better serve society as an educational institution open to the public.

In the 1990s, in response to the changes leading to a globalized information society, each faculty went through curriculum revisions to

accommodate the changing global complexities and innovations affecting higher education. One significant part of these changes was the introduction of the international education programs such as the Five-Week Intercultural Programs; the One-Year Program; Ritsumeikan-UBC (the University of British Columbia) Academic Immersion Program; and the Dual Undergraduate Degree Program / Dual Masters Degree Program with American University. As a result of these programs and the extensive global network Ritsumeikan has developed, the university now has one of the largest international student bodies in western Japan, offering numerous invaluable overseas study opportunities to its students.

Today, Ritsumeikan University offers a wide range of courses in advanced studies at Kinugasa Campus in Kyoto, Biwako-Kusatsu Campus (BKC) in Shiga, and Osaka Ibaraki Campus (OIC) in Osaka. The year 2020 marked the 150th anniversary of the founding of the Ritsumeikan private school and the 120th year of the establishment of Ritsumeikan University. Previously, to commemorate the 100th anniversary, Ritsumeikan opened an international educational institution, Ritsumeikan Asia Pacific University (APU), in Oita Prefecture in April 2000. The addition of APU has given new momentum to Ritsumeikan as it continues to adhere to its founding spirit into the 21st century. To date, the Ritsumeikan Trust has evolved into a comprehensive educational institution consisting of two universities, four senior high schools, four junior high schools, and one primary school.

The Origins of the Name "Ritsumeikan"

The word ritsumei comes from a passage in the Jinxin chapter of the Discourses of Mencius. This passage states that:

"Some die young, as some live long lives. This is decided by fate. Therefore, one's duty consists of cultivating one's mind during this mortal span and thereby establishing one's destiny."



Ritsumeikan Timeline

1869	Prince Kinmochi Saionji founds the private academy "Ritsumeikan" on the site of the Kyoto Imperial Palace	Management is established at BKC			
1900	Kojuro Nakagawa, former secretary of Prince Saionji, establishes the Kyoto Hosei School	2006	Suzaku Campus is established in Kyoto City's Nakagyo Ward / Ritsumeikan Moriyama Senior High School is established in Moriyama City, Shiga Prefecture / Ritsumeikan Primary School is established in Kyoto's Kita Ward / Graduate School of Management is established at Suzaku Campus	2012	Graduate Schools of Information Science and Engineering and Life Sciences are established / In College of Science and Engineering, Department of Electrical and Electronic Engineering and Department of Photonics are combined to form Department of Electrical and Electronic Engineering / Department of VLSI System Design changes its name to Department of Electronic and Computer Engineering / Department of Mechanical Engineering and Department of Micro System Technology are combined to form Department of Mechanical Engineering / In College of Letters, 14 majors and programs are combined and 8 programs and 18 majors are established
1913	The school adopts the name "Ritsumeikan"	2007	College of Image Arts and Sciences is established / Ritsumeikan Moriyama Junior High School is established in Moriyama City, Shiga Prefecture / Graduate School of Public Policy is established at Suzaku Campus / In College of Social Sciences, Department of Social Sciences, and Department of Human Welfare are combined to form Department of Social Sciences / Tokyo Campus is established	2013	Community and Regional Policy Studies Major is established in College of Policy Science / Dalian University of Technology-Ritsumeikan University International School of Information Science and Engineering is established
1922	The school name officially changes to Ritsumeikan University	2008	Colleges of Life Sciences and Pharmaceutical Sciences are established	2014	Graduate School of Pharmacy is established / Major in Informatics of Behavior and Cultures is established in Graduate School of Letters and the system of 2 majors with 15 specialized courses is established / Ritsumeikan Junior and Senior High School moves from Fukakusa Campus to Nagaokakyo Campus
1945	President Hiroshi Suekawa introduces a series of democratic reforms, including the Plenary Council and Presidential Election System	2009	The Kyoto Studies Program and the Language and Communication Program are established in College of Letters	2015	Osaka Ibaraki Campus (OIC) is established in Ibaraki City, Osaka Prefecture / College of Business Administration, College of Policy Science, Graduate School of Business Administration, Graduate School of Policy Science, Graduate School of Technology
1965	Kinugasa Campus is established in Kyoto City's Kita Ward	2010	College of Sport and Health Science and Graduate school of Sport and Health Science are established		Management, and Graduate School of Management are moved to OIC / Department of Pharmaceutical Sciences is established in College of Pharmaceutical Sciences
1994	Biwako-Kusatsu Campus (BKC) is established in Kusatsu City, Shiga Prefecture / Uji Academy is merged with Ritsumeikan Uji Junior and Senior High School	2011	Global Studies Major is established in College of International Relations / Graduate School of Image Arts and Sciences is established	2016	College of Comprehensive Psychology is established / Hirai Kaichiro Memorial Library is opened
1995	Keisho Academy is merged with Ritsumeikan Keisho Junior and Senior High School			2017	Graduate School of Professional Teacher Education is established / In College of Information Science and Engineering, Information Science and Engineering course is established to form seven courses in one college / College of Economics is reorganized to form two majors in one department
2000	Ritsumeikan Asia Pacific University is established in Beppu City, Oita Prefecture			2018	College of Gastronomy Management is established / American University-Ritsumeikan University Joint Degree Program is established in College of International Relations / Graduate School of Science for Human Services is reorganized / Graduate School of Human Science is established
2004	Ritsumeikan University School of Law is established at Kinugasa Campus			2019	College of Global Liberal Arts is established
2005	Ritsumeikan University Graduate School of Technology			2020	Major in Pharmaceutical Sciences in the Graduate School of Pharmacy is established (Master's Program)
				2021	Graduate School of Gastronomy Management is established

R2030 Ritsumeikan Academy Vision

To date, the Ritsumeikan Academy has pursued progressive education and research that gives expression to its educational philosophy of 'peace and democracy', which is rooted in the institution's founding ideals of 'freedom and innovation'. In 2010, we formulated the Academy Vision for 2020 with its slogan "Creating a Future Beyond Borders," and since then have assiduously pursued further institutional development.

Carrying forward this spirit and philosophy while paying respect to our history, we, the members of the Ritsumeikan Academy, hereby officially proclaim the R2030 Ritsumeikan Academy Vision, our formal expression of what we aim to become by the year 2030.

R2030 Ritsumeikan Academy Vision

Challenge **your** mind Change **our** future

Today, societies around the world are caught up in a whirlwind of change.

We face an uncertain future more difficult day by day to comprehend.

But the age demands of educational institutions a positive vision for the world of the future.

To realize the Ritsumeikan Vision, we must attract a diverse array of people while cultivating the virtues of flexibility and courage to change.

To this end, we must accept differing values and strive to better ourselves without fear of potential discord. Together, we will overcome the limitations that have, until now, held us back and apart.

Together, we will rise to the challenge to create a world in which myriad human endeavors lead to a bright future, filled with the promise of hope, peace, and freedom.

R2030 Academy Vision: Ideal Shape of the Academy and Ideal Qualities in Our People

Ideal Shape of the Academy

An Academy that serves as a community hub for lifelong learning
We aim to become an Academy that serves as a "port of call" that learners can turn to as and when required, at each stage of their lives, and find a way to study that suits their needs, so they can develop the ability to tackle new challenges.

An Academy that tackles the issues facing human society
We aim to become an Academy that strives to identify and find solutions for the myriad problems the world faces at various levels and on a variety of scales.

An Academy dedicated to realizing diversity and inclusion
We aim to become an Academy that generates a multitude of connections while working with others and seeking to understand and respect individual points of view as premised on the range of diversity in society, including diversity among individuals, organizations, regions, countries, religions, customs, cultures and generations.

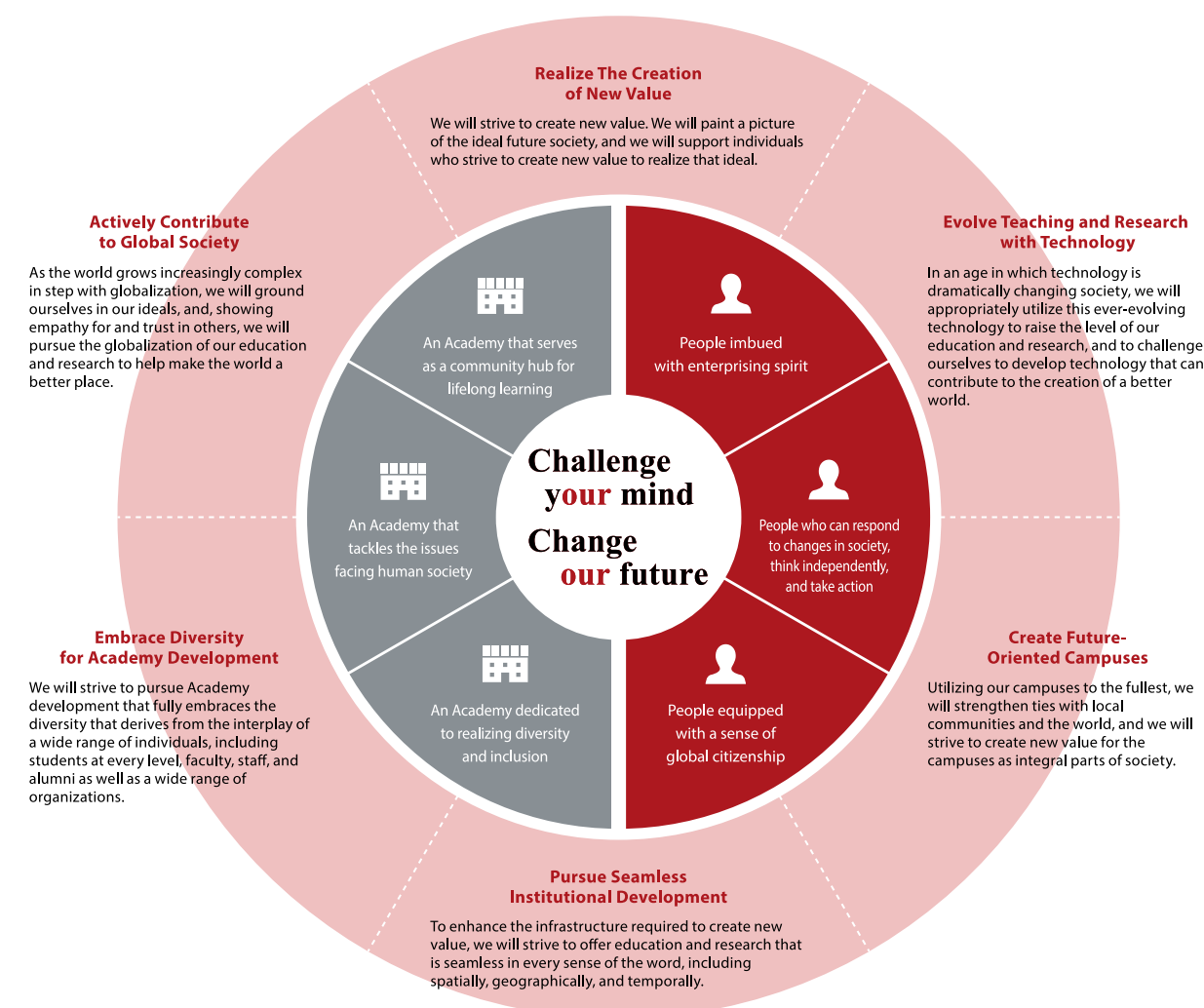
Ideal Qualities in Our People

People imbued with enterprising spirit
Our people are strong-willed individuals who persevere to overcome obstacles without fear of disputes or failure.

People who can respond to changes in society, think independently, and take action
Our people understand social change and have the insight to recognize the myriad issues that society faces, whilst at the same time taking affirmative steps to resolve them.

People equipped with a sense of global citizenship
Our people recognize that they are members of a global society, and take up the challenge of creating a multicultural society by respecting the standpoints and views of others and seeking harmonious solutions to problems.

Policy Objectives of the R2030 Academy Vision



R2030 Ritsumeikan Academy Vision

R2030 Academy Vision - Priority Goals and Challenge Design/ Action Plan

Ritsumeikan University

Priority Goals		Challenge Design	
1	Create intellectual values shared with society	1	Building a leading-edge research university with the Ritsumeikan Knowledge Nodes concept at its core
2	Innovate new values of learning	2	Developing education that links the improvement of research capabilities with the enhancement of education
3	Shape Ritsumeikan into an organization engaged in self-transformation	3	Improving the adaptability of learning systems to meet the needs of an increasingly diverse group of learners
		4	Organizing multifaceted collaborations to promote open innovation
		5	Engaging in organizational reform that leads a diverse group of individuals to create new values

Ritsumeikan Asia Pacific University

Priority Goals		Action Plan	
1	APU will leverage its unique multinational and multicultural environment, and having provided a living environment as well as opportunities for activities and learning for growing as a global citizen, create a world-class Global Learning Community.	1	From diversity/a multicultural environment to diversity and inclusion: pursue new growth and create APU education that is creative and internationally competitive
2	In continually improving the quality of its education and research, APU will create new global learning values that will be accepted throughout the world and disseminate research applicable globally.	2	Promote internationally applicable research that contributes to society and the community
		3	Contribute to the growth of local communities around the world (create a new regional development model for civil society, government, and academia with the university at its core)
		4	Enhance diverse lifespan careers in which graduates can take an active role in the world and contribute to society
3	APU will deepen its connections with its graduates globally, with local communities in every land in the world, and every type of stakeholder, and collaborate with them in educational activities and university operations.	5	Improve the network of graduates and organizations of graduates possessing the power to change the world as global leaders
		6	Build a foundation for, and organization to, support a Global Learning Community

Ritsumeikan Integrated Primary and Secondary Education (Primary School, Junior High Schools, and Senior High Schools)

Priority Goals		Challenge Design	
1	Become integrated education schools with linkages up through the graduate level: Integrated education that produces talent who can create new value	1	From affiliated schools to integrated education schools: Integrated education where the primary school, junior high schools, high schools, universities, and graduate schools work together to cultivate students
2	Become schools for a new era: Presenting a new kind of academic ability and new perspectives on academic ability for 2030 as Ritsumeikan's integrated education schools	2	Design various learning venues: Striving to produce leaders for a multicultural society and instilling in them the ability to survive in such a society
3	Realize diversity through the development of learning in collaboration with the world: A new model for integrated education		
4	Towards flexible and seamless learning created by our students: Realize the Ritsumeikan version of the Future Classroom	3	Ritsumeikan's version of the Future Classroom where students create their own learning: Towards a heretofore unseen level of flexibility in learning.

The Ritsumeikan Trust

Ritsumeikan Suzaku Campus

1 Nishinokyo-Suzaku-cho, Nakagyo-ku, Kyoto 604-8520

Ritsumeikan University Kinugasa Campus

56-1 Toji-in Kitamachi, Kita-ku, Kyoto 603-8577

Ritsumeikan University Biwako-Kusatsu Campus

1-1-1 Noji-higashi, Kusatsu, Shiga 525-8577

Ritsumeikan University Osaka Ibaraki Campus

2-150 Iwakura-cho, Ibaraki, Osaka 567-8570

Ritsumeikan Asia Pacific University

1-1 Jumonjibaru, Beppu, Oita 874-8577

URL: <http://en.apu.ac.jp/>

Ritsumeikan Tokyo Campus

Sapia Tower 8th floor,
Marunouchi 1-7-12, Chiyoda-ku, Tokyo, Japan
URL: <http://www.ritsumei.ac.jp/tokyocampus/>

Overseas Offices

■ UBC-Ritsumeikan Academic Exchange Program Office(Vancouver)

The University of British Columbia
Room 333 – 6460 Agronomy Road, Vancouver, BC Canada V6T 1Z4
URL: <https://rits.ubc.ca/>

■ Ritsumeikan UK Office (London)

Room 241, Old Building, SOAS, University of London, Thornhaugh Street,
Russell Square, London, WC1H 0XG, UK
URL: <http://en.ritsumei.ac.jp/international-outreach/offices/uk/>

■ Ritsumeikan India Office (Delhi)

WeWork Platina Tower, Mehrauli-Gurgaon Rd, Gurugram, Haryana 122002, India
(Near Sikanderpur Metro Station)
URL: <http://en.ritsumei.ac.jp/international-outreach/offices/india/>

■ Ritsumeikan University Beijing Office (Beijing)

WeWork Guanghua Ocean International Center 07A127
Guanghua Ocean Int'l. Center, 7th floor, Tower AB Office Park,
10 Jintong West Road, Chaoyang District, Beijing 100020, China
URL: <http://en.ritsumei.ac.jp/international-outreach/offices/beijing/>

■ Ritsumeikan University Washington, D.C. Office (Washington, D.C.)

1875 K Street NW, Suite 422, Washington, D.C. 20006, USA
URL: <http://en.ritsumei.ac.jp/international-outreach/offices/dc/>

■ Ritsumeikan University ASEAN Office (Hanoi)

9th Floor, Block A, Department of International Affairs, Foreign Trade
University, 91 Chua Lang St, Dong Da, Hanoi, Vietnam
URL: <http://en.ritsumei.ac.jp/international-outreach/offices/asean/>

Ritsumeikan Junior High School Ritsumeikan Senior High School

1-1-1 Choshi, Nagaokakyo, Kyoto 617-8577

URL: <http://www.ritsumei.ac.jp/fkc/eng/>

Ritsumeikan Uji Junior High School Ritsumeikan Uji Senior High School

33-1 Hachikenyardani Hirono-cho, Uji, Kyoto 611-0031

URL: http://www.ujc.ritsumei.ac.jp/ujc_e/

Ritsumeikan Keisho Junior High School Ritsumeikan Keisho Senior High School

640-1 Nishinopporo, Ebetsu, Hokkaido 069-0832

URL: <http://www2.spc.ritsumei.ac.jp/eng/>

Ritsumeikan Moriyama Junior High School Ritsumeikan Moriyama Senior High School

250 Miyake-cho, Moriyama, Shiga 524-8577

URL: <http://www.ritsumei.ac.jp/moriyama/eng/>

Ritsumeikan Primary School

22 Koyama-Nishi-Kamifusa-cho, Kita-ku, Kyoto 603-8141

URL: <http://en.ritsumei.ac.jp/primary/>

Ritsumeikan Osaka Umeda Campus

Osaka Fukoku Seimei Building 5th and 14th floors,
Komatsubara-cho 2-4, Kita-ku, Osaka, Japan
URL: <http://www.ritsumei.ac.jp/osakaumedacampus/>

■ Ritsumeikan Asia Pacific University Vietnam Office (Ho Chi Minh City)

238/2B Nguyen Thi Minh Khai Street, Ward 6, District 3, Ho Chi Minh City, Vietnam
URL:<http://vietnam.apu.ac.jp>

■ Ritsumeikan Asia Pacific University Indonesia Office (Jakarta)

C/O MARQUEE, Mayapada Tower 1, 11th Floor, Jl.Jend. Sudirman Kav. 28 Jakarta 12920, Indonesia
Tel: +62-21-5289 7328 / 7392

■ Ritsumeikan Asia Pacific University Taiwan Office (Taipei)

8F.,No.560, Sec.4, Zhongxiao E. Rd., Xinyi Dist., Taipei City 110, Taiwan
Tel: +886-2-7718-8685

■ APU Korea Office (Seoul)

#608, Halla Classic Officetel 6th Floor, 23 Gangnam Daero 84 Gil, Gangnam-gu, Seoul 135-934 Korea
URL: <http://www.ritsapu-kr.com>

■ Ritsumeikan Asia Pacific University Thailand Office (Bangkok)

Room 1015, 10th Floor, Serm-mit Tower 159/16 Soi Asoke, Sukhumvit 21 Road, Wattana, Bangkok 10110 Thailand
Tel/Fax: +66-2-665-7145

■ Ritsumeikan Liaison Office located in Shanghai JiaoTong University (Shanghai)

Room D, 18F, Sun Tong Infoport Plaza No.55 Huaihai West Rd., Shanghai City 200030 China
Tel: +86-21-6283-5104

Kinugasa Campus

		Departments	Programs / Majors / Concentrations	
Colleges	College of Law	Law		
	College of Social Sciences	Social Sciences	Social Sciences / Media and Society / Sports and Society / Children and Society / Human Welfare	
	College of International Relations	International Relations	International Relations / Global Studies	
		AU-RU Joint Degree Program ⁽¹⁾		
	College of Letters	Humanities	Human Studies	Philosophy and Ethics / Educational Anthropology
			Japanese Literature	Japanese Literature / Japanese Language and Information Science
			Japanese History	Japanese History / Archaeology and Cultural Heritage
			East Asian Studies	Chinese Literature and Philosophy / East Asian History / Modern East Asian Languages and Cultures
			Global Studies	English and American Literature / European and Islamic History / Arts and Cultures
			Area Studies	Geography / Regional Tourism
			International Studies and English Communication	Culture and Area Studies of English-Speaking Regions / Global English and English Education
			Language and Communication	Communication and Expression / Linguistics and Japanese Language Education
	College of Image Arts and Sciences	Image Arts and Sciences		



Graduate Schools	Graduate School of Law	Law
	Graduate School of Sociology	Applied Sociology
	Graduate School of International Relations	International Relations
	Graduate School of Letters	Humanities / Informatics of Behavior and Cultures
	Graduate School of Image Arts	Image Arts
	Graduate School of Language Education and Information Science	Language Education and Information Science
	Graduate School of Core Ethics and Frontier Sciences	Core Ethics and Frontier Sciences

Osaka Ibaraki Campus (OIC)

		Departments	Programs / Majors / Concentrations
Colleges	College of Business Administration	International Business Administration	
		Business Administration	Administration Strategy • Entrepreneurship / Accounting and Finance / Marketing
	College of Policy Science	Policy Science	Policy Science / Community and Regional Policy Studies
	College of Comprehensive Psychology	Comprehensive Psychology	Cognition and Behavior / Development and Support / Society and Relation
	College of Global Liberal Arts ⁽²⁾	Global Liberal Arts	

Graduate Schools	Graduate School of Business Administration	Business Management
	Graduate School of Policy Science	Policy Science
	Graduate School of Human Science	Human Science
	Graduate School of Technology Management	Technology Management
	Graduate School of Management	Management

Biwako-Kusatsu Campus (BKC)

		Departments	Programs / Majors / Concentrations
Colleges	College of Economics	Economics	Global Studies / Economic Studies
	College of Sport and Health Science	Sport and Health Science	Sports Science / Health Exercise Science / Sports Education / Sports Management
	College of Gastronomy Management	Gastronomy Management	
	College of Science and Engineering	Mathematical Science	
		Physical Sciences	
		Electrical and Electronic Engineering	
		Electronic and Computer Engineering	
		Mechanical Engineering	
		Robotics	
		Civil and Environmental Engineering	
		Architecture and Urban Design	
	College of Information Science and Engineering	Information Science and Engineering	System Architect / Security and Networks / Frontier Social Design / Physical Computing / Audio and Visual Media Technology / Artificial and Natural Intelligence / Information Systems Science and Engineering
	College of Life Sciences	Applied Chemistry	
		Biotechnology	
		Bioinformatics	
		Biomedical Sciences	
	College of Pharmaceutical Sciences	Pharmacy (6-year track)	
		Pharmaceutical Sciences	

Graduate Schools	Graduate School of Economics	Economics
	Graduate School of Sport and Health Science	Sports and Health Science
	Graduate School of Gastronomy Management	Gastronomy Management
	Graduate School of Science and Engineering	Advanced Mathematics and Physics / Advanced Electrical, Electronic and Computer Systems / Advanced Mechanical Engineering and Robotics / Advanced Architectural, Environmental and Civil Engineering
		Advanced Information Science and Engineering
		Advanced Life Sciences
	Graduate School of Information Science and Engineering	Advanced Information Science and Engineering
	Graduate School of Life Sciences	Advanced Life Sciences
	Graduate School of Pharmacy	Pharmacy (4-year Doctoral Program)
		Pharmaceutical Sciences

Suzaku Campus

		Majors
Graduate Schools	Graduate School of Public Policy ⁽³⁾	Public Policy
	School of Law	Legal Training
	Graduate School of Professional Teacher Education	Major in Teaching Profession and Educational Practices

Notes:
 (1) American University-Ritsumeikan University Joint Degree Program
 (2) Dual Degree Program with the Coral Bell School of Asia Pacific Affairs at the Australian National University
 (3) Discontinued recruitment of students in 2018



Kyoto is a city of learning, culture, and the arts. Kinugasa Campus is surrounded by the historic temples of Kinkakuji, Ryoanji, Ninnaji, and Tojiin, providing a serene environment for research and education. At Kinugasa Campus, our emphasis is on the social sciences and humanities. Kinugasa Campus is home to five colleges (Colleges of Law, Social Sciences, International Relations, Letters, and Image Arts and Sciences), seven graduate schools, as well as research facilities including the Art Research Center, making it an integrated education and research center for humanities and social sciences. In April 2016, the Hirai Kaichiro Memorial Library was also opened. It serves as the centerpiece of Ritsumeikan's learning community, promoting new and engaging active learning styles.

Haradani Field



Hiragino Field



Kinugasa Campus

Address: 56-1 Toji-in Kitamachi, Kita-ku, Kyoto 603-8577

Student enrollment as of May 1, 2021

Colleges	Total Number of Students	Number of International Students	Year of Establishment
College of Law	3,138	61	1900
College of Social Sciences	3,396	83	1965
College of International Relations	1,404	260	1988
College of Letters	4,146	105	1927
College of Image Arts and Sciences	676	59	2007
Total	12,760	568	

Graduate Schools	Total Number of Students	Number of International Students	Year of Establishment
Graduate School of Law	34	6	1950
Graduate School of Sociology	150	50	1972
Graduate School of International Relations	184	144	1992
Graduate School of Letters	190	57	1950
Graduate School of Image Arts	21	13	2011
Graduate School of Language Education and Information Science	67	41	2003
Graduate School of Core Ethics and Frontier Sciences	176	27	2003
Total	822	338	

Kyoto Museum for World Peace, Ritsumeikan University

The first peace museum in the world to be established by a university, Kyoto Museum for World Peace was established in May of 1992 to help people learn from the past and to promote future peace.



Ritsumeikan University

Biwako-Kusatsu Campus (BKC)

Biwako-Kusatsu Campus (BKC) was established as an education and research center in April of 1994 with the aim of creating a world-class campus which integrates the humanities and sciences. To this end, faculty, staff, and students at BKC are making efforts towards the development of new education and research systems. They are actively pursuing research and the creation of new industries through industry-government-academia collaboration and community involvement. Faculty and staff at BKC are combining cutting-edge science with social sciences and constructing a diverse

educational system that goes beyond existing academic fields. In addition, the construction of the BKC Sports and Health Commons was completed in September 2016. Under the concept of "Creating a sports and health community hub," the facilities are used for regular courses, extracurricular activities and research activities, and offer health promoting programs necessary for students, faculty and staff as well as people from the local community to voluntarily establish a healthy lifestyle.



BKC Green Field

BKC Green Field is equipped with an athlete clubhouse and two artificial turf fields exclusively for the American football and rugby teams.

Biwako-Kusatsu Campus (BKC)

Address: 1-1-1 Noji-higashi, Kusatsu, Shiga 525-8577



Student enrollment as of May 1, 2021

Colleges	Total Number of Students	Number of International Students	Year of Establishment
College of Economics	3,229	67	1903
College of Sport and Health Science	991	14	2010
College of Gastronomy Management	1,238	43	2018
College of Science and Engineering	3,933	178	1914
College of Information Science and Engineering	1,970	296	2004
College of Life Sciences	1,252	67	2008
College of Pharmaceutical Sciences	823	10	2008
Total	13,436	675	

Graduate Schools	Total Number of Students	Number of International Students	Year of Establishment
Graduate School of Economics	102	78	1950
Graduate School of Sport and Health Science	111	4	2010
Graduate School of Gastronomy Management	20 (First-year students only)	10	2021
Graduate School of Science and Engineering	960	105	1963
Graduate School of Information Science and Engineering	438	129	2012
Graduate School of Life Sciences	291	24	2012
Graduate School of Pharmacy	79	2	2014
Total	2,001	352	



Ritsumeikan University Osaka Ibaraki Campus (OIC)



Osaka Ibaraki Campus (OIC) is expected to facilitate collaboration with industry and government institutions, promote the Ritsumeikan Academy's activities on the frontline of regional and social collaboration and is fully equipped with facilities which can provide adaptable learning and exchange spaces. OIC is home to four colleges and five graduate schools. The campus is based on three core academic concepts: "Gateway to Asia," "Urban Co-creation" and "Regional and Social Collaboration." The concepts take advantage of the qualities of an urban situated campus and of the colleges and graduate schools that compose the campus. In April 2024, Ritsumeikan will relocate the College and Graduate School of Image Arts and Sciences and the College and Graduate School of Information Science and Engineering to OIC.

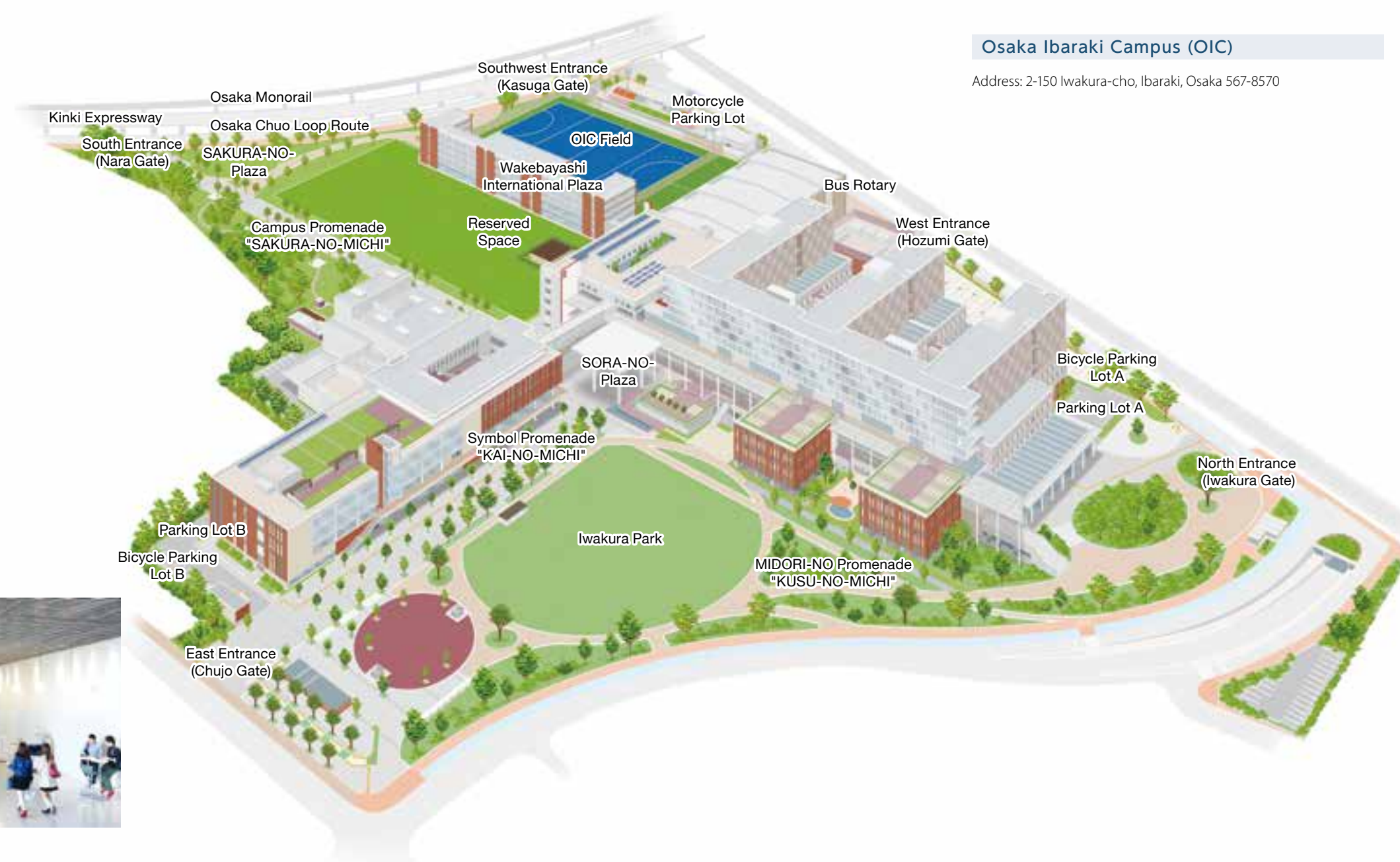
Colleges	Total Number of Students	Number of International Students	Year of Establishment
College of Business Administration	3,224	141	1962
College of Policy Science	1,684	88	1994
College of Comprehensive Psychology	1,168	45	2016
College of Global Liberal Arts	195 (First-, second-, and third-year students only)	85	2019
Total	6,271	359	

Student enrollment as of May 1, 2021

Graduate Schools	Total Number of Students	Number of International Students	Year of Establishment
Graduate School of Business Administration	107	92	1966
Graduate School of Policy Science	72	46	1950
Graduate School of Human Science	217	30	2018
Graduate School of Technology Management	170	105	2005
Graduate School of Management	117	55	2006
Total	683	328	

Osaka Ibaraki Campus (OIC)

Address: 2-150 Iwakura-cho, Ibaraki, Osaka 567-8570





Established in September 2006 as a local and global center of knowledge, Suzaku Campus hosts several high level professional graduate schools as well as the Ritsumeikan Trust headquarters. The School of Law aims to cultivate internationally minded legal professionals equipped to meet present-day challenges. The Graduate School of Professional Teacher Education aims to become a path bridging theory and practice. It offers a unique educational program that incorporates a number of field works and long-term practical studies in collaboration with the education boards of Kyoto, Shiga and Osaka Prefectures, where Ritsumeikan University's affiliated schools and campuses are located. With meticulous instruction from the research and teaching faculty members, the students can gain high competency as a teacher and the ability to become a successful school leader in the future.

Student enrollment as of May 1, 2021

Colleges	Total Number of Students	Number of International Students	Year of Establishment
Graduate School of Public Policy*	1	0	2007
School of Law	115	0	2004
Graduate School of Professional Teacher Education	55	0	2017
Total	171	0	

* Discontinued recruitment of students in 2018.



Suzaku Campus

Address: 1 Nishinokyo-Suzaku-cho, Nakagyo-ku, Kyoto 604-8520



Research Activities

Grants-in-Aid for Scientific Research*1 (KAKENHI)

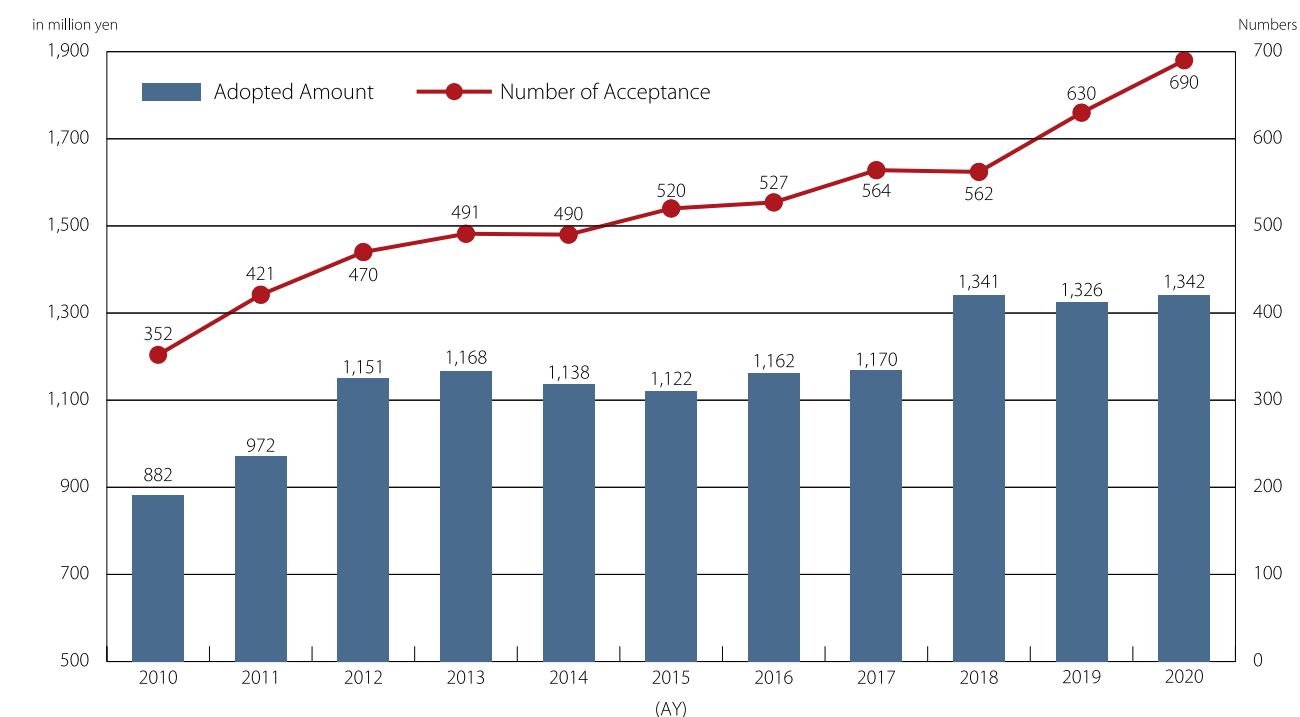
According to the grant-in-aid allocation results for fiscal 2020 that were released in December 2020, Ritsumeikan University ranked third among private universities (and first among private universities in western Japan) for both the amount of funds allocated and the number of grants received. At the national level, Ritsumeikan University ranked 23rd in the amount of funds allocated and 21st in the number of grants received. In addition, the amount of funds allocated has exceeded ¥1.3 billion per year for the three years since AY2018.

Looking at the breakdown by category (focusing on the top 10 institutions*2 for projects selected by subcategory (total number of newly adopted projects in the past three years), Ritsumeikan University placed within the top 10 in Japan in 10 categories, achieving its highest overall ranking of second place in Japan in Sociology and Related Fields. It also ranked first among private universities in the categories of Geography, Cultural Anthropology, Folklore and Related Fields; Human Informatics and Related Fields; and Environmental Conservation and Related Fields. As this shows, Ritsumeikan University is leveraging its strengths to pursue innovative and pioneering research in a variety of fields. Furthermore, the share of female researchers accounting for the number of projects selected reached 25.4%, which demonstrates the remarkable increase in the number of grant-in-aid awards obtained by female researchers at the university.

*1: Grants-in-Aid for Scientific Research, one type of competitive research funding granted by the Ministry of Education, Culture, Sports, Science and Technology, subsidizes basic and applied research in every field from the humanities and social sciences to the natural sciences. With an annual budget exceeding ¥200 billion, they are an indispensable source of funding for the development of Japan's science and technology.

*2: total number of newly adopted projects in the past three years

Ritsumeikan University Grant-in-Aid Award Amounts and Project Numbers



Ritsumeikan Asia Pacific University Research Activities

At Ritsumeikan Asia Pacific University, the International Cooperation and Research Division and the Ritsumeikan Center for Asia Pacific Studies (RCAPS) collaborate in promoting research activities. The Asia Pacific Conference held once a year by RCAPS is Japan's largest academic conference for the humanities and social sciences that is held in English. In addition, Grants-in-Aid for Scientific Research are given to more than 10 APU research projects each year. Characteristically, many of APU's research projects involve international cooperation. In fact, the Ministry of Education, Culture, Sports, Science and Technology selected APU for the 2018 Private University Research Branding Program (Type B) to make use of its multicultural environment and establish a base for the research, cultivation, and implementation of inclusive leadership. APU expects that its inclusive leadership will contribute solutions for the problems of globalized modern society.

Ritsumeikan University Research Enhancement Mid-Term Plan

Together with education, Ritsumeikan University places emphasis on strengthening the research that serves to form its basis as an institution of advanced research. Since AY2006, we have formulated a series of five-year Mid-Term Plans for Research Advancement to boost the quality and quantity of our research and enhance our reputation by improving the quality of education through the advancement of research, and we have pursued research initiatives based on these plans.

By implementing these Mid-Term Plans for Research Advancement, Ritsumeikan University has not only increased the number of articles published and the number of citations, we have also significantly increased the number and amount of external funding received including Grant-In-Aid for Scientific Research Subsidies and projects funded in partnership with corporations. Furthermore, we have leveraged our strength as a comprehensive university whose colleges and graduate schools encompass the fields of the humanities and

social sciences and the natural sciences as well as interdisciplinary programs, and we have pursued a wide range of initiatives aimed at combining myriad research areas to create new research fields.

Following on from the 1st (AY2006 - AY2010) and 2nd (AY2011 - AY2015) Mid-Term Plans for Research Advancement, we implemented the 3rd Mid-Term Plan for Research Advancement (AY2016 - AY2020) whose goal was to “realize efforts to become a distinctive global research university.”

The R2030 Academy Vision Challenge Design (Action Plan) calls for us to start building a next-generation research university in AY2021. To achieve this goal, we formulated the next Mid-Term Plan for Research Advancement under which we will implement detailed policy measures to promote the further internationalization of research, including the promotion of a diverse array of original research, the creation of world-class research hubs, and the cultivation of young researchers for the next generation.

Research Offices

The Research Offices of Ritsumeikan University act as central contact points for matters concerning research activities and they promote research exchanges between private enterprises and public research

institutions. This allows the offices to construct the perfect formation for any given issue and provide smooth collaboration between industry, academia, and government.

Research Organizations, Research Institutes and Research Centers

In addition to pursuing research in the respective fields of the humanities, social sciences, and natural sciences, Ritsumeikan University also has six independent research organizations that operate separately from academic organizations to implement interdisciplinary research across various colleges and graduate schools. The research institutes and centers within these organizations pursue pioneering, original research as part of our efforts to secure major research grants, including the Grant-In-Aid for

Scientific Research Subsidies provided by the national government and create world-leading research hubs. At the same time, we ensure the active involvement of graduate and other students in our research activities and proactively promote research exchange with national and local government agencies and corporate partners as a means to feed the outcomes of our research back into the community.



Research Organizations, Research Institutes and Research Centers

(As of July 1, 2021)



Promote new forms of globalization

To “actively contribute to global society” is one of the policy objectives of the R2030 Ritsumeikan Academy Vision. Under this vision, Ritsumeikan University, Ritsumeikan Asia Pacific University (APU), and the affiliated schools are actively nurturing human resources through the globalization of education and research, all while taking advantage of each institution’s strengths. The Ritsumeikan Academy will continue to further pursue new forms of globalization by creating opportunities for international exchange and learning online.

World University Rankings

Both Ritsumeikan University and APU are undertaking efforts to improve their standings in world university rankings.

Ritsumeikan University was the only private university in western Japan ranked in the QS*1 World University Rankings 2021, and it ranked first among private universities in western Japan and fourth among the nation’s private universities in the QS Asia University Rankings 2021. In the *THE**2 Impact Rankings 2021, Ritsumeikan University placed highest among Japanese private universities for the second consecutive year. In the *THE* Japan University Rankings 2021, APU was the highest ranked private university in western Japan for the fourth consecutive year and placed in the top five private universities in the nation. Moreover, APU took second place among all Japanese universities in Environment, an assessment category that measures universities’ internationalization for the second consecutive year.

*1:QS… Quacquarelli Symonds: a British university assessment institution

*2:THE… *Times Higher Education*: a British education journal

Projects Awarded by the Ministry of Education, Culture, Sports, Science and Technology (MEXT)

■ Selected for the Top Global University Project

This project was established in order to improve the international competitiveness of higher education in Japan and enhance international collaboration with preeminent foreign universities, by providing focused support to two types of universities: those that offer world-class education and research (Type A: Top Type), and those that promote the globalization of universities (Type B: Global Traction Type). Under this project, which was launched in 2014, MEXT aims to provide the funds for a maximum of 10 years. Both Ritsumeikan University and APU were selected as Type B institutions, and on the mid-term evaluation conducted in FY2020, Ritsumeikan University received a grade of ‘A’ while APU received a grade of ‘S.’

Projects:

•Bridging the World and Asia: Human development to collaborate across cultures and contribute globally to Asian communities (Ritsumeikan University)

•Global Learning: Toward New Horizons in University Education (APU)

■ Selected for the Inter-University Exchange Project

The aim of this project is to cultivate global human resources who can succeed in the global arena and strengthen the global expansion of university education. The project supports international educational collaboration initiatives with universities in Asia, the U.S., and Europe to study abroad by Japanese students and strategically accept foreign students, all while assuring the quality of higher education. Both Ritsumeikan University and APU have been selected for 5 projects in total.

In addition, Ritsumeikan Uji Senior High School was designated as a core school for MEXT’s Project for the Creation of Worldwide Learning (WWL) Consortia.

International Accreditation

APU is committed to meeting international standards for the assurance of learning by acquiring international accreditations. In 2016, APU obtained accreditation from the Association to Advance Collegiate Schools of Business (AACSB International), a U.S.-based business school accreditation agency, and in 2020, it earned accreditation from the Association of MBAs (AMBA), a U.K.-based international accreditation agency for graduate level management education, thereby proving itself to be a purveyor of world-class management education. With these accreditations,

APU became just the third AACSB-accredited institution and the second AMBA-accredited institution in Japan. Furthermore, in 2018, APU’s Hospitality and Tourism program earned TedQual Certification from the United Nations World Tourism Organization (UNWTO). The Ritsumeikan Academy’s affiliated schools also promote globalization. Particularly, Ritsumeikan Uji Senior High School was designated as an International Baccalaureate Diploma Program (IBDP) school, which allows it to provide an internationally accepted qualification for entry into higher education.

■ International Service and Cooperation Activities

In order to realize the ideas put forth in the Ritsumeikan Charter, the Ritsumeikan Academy has been engaged in a variety of international and Developing Global Talent cooperation projects.

1. Developing Agreements with Foreign and Domestic Government Agencies

The Ritsumeikan Academy is working together with various foreign and domestic governmental agencies, universities and other parties to establish universities and institutes. The Ritsumeikan Academy is currently providing support to Egypt-Japan University of Science and Technology (E-JUST), Vietnam-Japan University (VJU) and Malaysia Japan International Institute of Technology (MJIT).

2. Human Resource Development Programs

Since 2004, the Ritsumeikan Academy has carried out a wide range of human resource development programs both within and outside Japan, working together with foreign and domestic governmental agencies and universities. The programs have covered trainings for university administration, conservation and risk management of historic towns for cultural tourism, tourism resources improvement, disaster mitigation, public policy and so forth.

3. Human Resource Development with Private Enterprises

The Ritsumeikan Academy, in cooperation with Cosmo Energy Exploration & Production Co., Ltd. and Abu Dhabi Oil Co.,Ltd., has been conducting the Japanese Language Teaching Program at ATHS (Applied Technology High School) in Abu Dhabi, UAE, since 2011. With academic support from the Ritsumeikan University Japanese Language Education Center, the program provides Japanese language and culture lessons and events for selected students from Grade 9 to 12, including a short-term summer school program at Ritsumeikan Affiliate Schools at the end of Grade 10.

4. Post Disaster Recovery Support

The Ritsumeikan Academy is dedicated to continue post disaster recovery support, both domestically and abroad, by using its international and domestic networks. In recent years, the Ritsumeikan Academy has actively been carrying out projects in areas affected by the Great East Japan Earthquake.

■ Confucius Institutes at Ritsumeikan University and Ritsumeikan Asia Pacific University

The Confucius Institutes are organizations that promote mutual understanding and cultural exchange between Japan and China, whilst also providing support to scholars of the Chinese language. The Ritsumeikan Academy worked in collaboration with the Chinese government and Peking University to establish the first ever institute in Japan in 2005, The Confucius Institute, followed thereafter by the establishment of Tokyo Confucius Classroom and BKC Confucius Classroom. In 2007, in collaboration with Zhejiang University, APU Confucius Institute was established, before 2008 saw the opening of Osaka Confucius Classroom, in collaboration with Tongji University.

The institutes provide a range of Chinese language classes from beginners through to advanced; lectures and seminars related to Chinese culture and society; practice-based workshops on Tai Chi, and Chinese: tea, dumplings and paper cutting; as well as playing host to public performances of Peking opera and other Chinese performing arts. The institutes also offer open-access libraries containing China-related books, and continue to develop activities related to exchange study support and the promotion of cultural exchange in general.



Ritsumeikan University

English-Based Programs

Undergraduate Programs (for degree-seeking students)

Dual Degree Program between the Australian National University and Ritsumeikan University, College of Global Liberal Arts

Through this 4 year Dual Degree Program, students will have the opportunity to graduate with 2 degrees - one from Ritsumeikan University, and one from the Australian National University.

American University-Ritsumeikan University Joint Degree Program, College of International Relations

In this 4 year Joint Degree Program, students will be jointly awarded a BA degree in Global International Relations from American University and Ritsumeikan University.

Global Studies Major, College of International Relations

In this 4 year BA program, students learn to analyze global affairs from a variety of perspectives as part of a diverse international student body.

Community and Regional Policy Studies Major, College of Policy Science

In this 4-year BA program, students study community and regional policy issues both in local and global context from interdisciplinary perspectives like political science, law, economics, sociology, environmentology, and urban engineering, and acquire the skills to design and implement policies in order to solve problems and play an active role not only regionally but also worldwide.

Information Systems Science & Engineering Course, College of Information Science and Engineering

Modern information systems are developed by diverse international teams from many countries; political and cultural borders are no longer boundaries. The main focus of education in the Information Systems Science and Engineering Course is to train people who can work in this quickly evolving technical world, as team members, as innovators, and as leaders.

Dual Undergraduate Degree Programs

Students study for approximately 2 years at each university and receive bachelor's degrees from both universities upon graduation. Jointly offered with: American University (USA), Sookmyung Women's University (South Korea), the University of International Business and Economics (China).

Other Programs (for non-degree-seeking students)

Study in Kyoto Program

A one or two semester program focusing on Japanese language and cultural studies; approximately 200 participants per year. Students join one of three tracks—the Intensive Japanese Language Track, the Open Study in English Track or the Business Track. Open Study in English and

Business Track students study beginner-level Japanese while taking a range of courses taught in English together with Japanese students.

Ritsumeikan Summer/Winter Japanese Program

Ritsumeikan Summer Japanese Program (RSJP) and Ritsumeikan Winter Japanese Program (RWJP) are short-term intensive programs designed for studying the Japanese language and culture. We can also offer customized programs to meet the requirements and budget for your institution.

Graduate Programs

Graduate Degree Programs Offered in English

- 1 Graduate School of Economics: Master of Economics / Doctor of Philosophy
- 2 Graduate School of International Relations: Master of Arts in International Relations / Doctor of Philosophy
- 3 Graduate School of Policy Science: Master of Arts in Policy Science / Doctor of Philosophy in Policy Science
- 4 Graduate School of Science and Engineering: Master of Science, Master of Engineering / Doctor of Science, Doctor of Engineering
- 5 Graduate School of Information Science and Engineering: Master of Engineering / Doctor of Engineering
- 6 Graduate School of Life Sciences: Master of Science, Master of Engineering / Doctor of Science / Doctor of Engineering
- 7 Graduate School of Technology Management: Doctor of Philosophy in Technology Management

Dual Master's Degree Program

Students study for approximately 1 year at each university and receive master's degrees from both universities upon graduation. Jointly offered with: American University (USA), Institute of Social Studies (Netherlands), Lancaster University (UK), ESCM Business School (France), Chung-Ang University (South Korea), Guangdong University of Foreign Studies (China) and more.

* Program eligibility depends on graduate school of enrollment

Special Scholarship Programs

- 1 Japanese Government (MEXT) Scholarship
- 2 Japanese Grant Aid including JDS, PEACE, ABE, IITH, Pacific-LEADS, Innovative Asia, etc.
- 3 Asian Development Bank-Japan Scholarship Program (ADB-JSP)
- 4 Japan-International Monetary Fund (IMF) Scholarship Program for Asia
- 5 Joint Japan / World Bank Graduate Scholarship Program (JJ/WBGSP)
- 6 China Scholarship Council

Ritsumeikan University

Study Abroad Programs

Due to the COVID-19 pandemic, Ritsumeikan University was unable to proceed with exchange programs involving overseas travel during the AY 2020. Thus, the information from the AY 2019 is presented below.

Program	Duration	Numbers at a Glance	Description
Global Fieldwork Project	1 week (Aug.-Sep.)	7 universities 30-60 students to each	This is a new type of experience-based initiation program. Students are divided into groups and conduct fieldwork such as culture, history, or sightseeing surveys in accordance with a theme decided by each group for a week at their destination location.
Intercultural Understanding Seminar / Second Foreign Language Seminar	4 weeks (Feb.-Mar., Aug.-Sep.)	18 courses 18-30 students to each	18 courses are available in 13 countries and regions. Participants in this program take part in intercultural communication seminars, foreign language classes and field trips.
Ritsumeikan-Showa Boston "Culture and Society Research" Program	4 weeks (Aug.-Sep.)	30 students	This introductory program is aimed at students with an interest in social and cultural issues. Students can gain a global perspective through the courses and fieldwork and may participate regardless of prior English ability.
Overseas Study Program	2-4 weeks (Feb.-Mar., Aug.-Sep.)	3 courses, 15-25 students to each	The program focuses on practical learning in specialized fields that diverge from rigid language learning and helps students put their on-campus learning into practice while studying abroad. The program offers students opportunities to take specialized lectures in English and go on field trips that facilitate connections between real life experience and the content of each program. In non-English speaking countries, students also learn the languages spoken in the respective countries where they are studying.
Asian Community Leadership Seminar	3 weeks (Aug.)	10 students	This program is jointly operated by Kyung Hee University (KHU, Korea), Tamkang University (TKU, Taiwan), and Ritsumeikan University (RU), consisting of a 3-week "mobility program", during which 30 students (10 from each institution) stay together for a week at each university. This program aims to discuss several social issues around the East Asia region with "Peace", "Asia", and "Future" as central concepts.
Ritsumeikan-Macquarie University "Australia-Japan Relations" Program	7 weeks (Aug.-Sep.)	30 students	Students study regular courses offered at Macquarie University in Australia by learning English and practical tips from the lectures and learn how to deal with different cultures.
One Semester Study Abroad Program	4 - 6 months	4 courses 20 - 36 students	This study abroad program takes place over one semester (4 - 6 months) at a host university. In 2020, programs are under way at Universiti Teknologi Mara in Malaysia, the University of Washington, the University of California, Davis in the USA and the University of York in the UK.
Ritsumeikan-University of Alberta "Language, Culture and Society in North America" Program	8 months (Aug. - Apr.)	4 students	Students take English language courses in their first semester and improve English skills while learning various topics on culture and society in Canada, with the aim of taking regular courses in their second semester.
Ritsumeikan-UBC Academic Immersion Program	8 months (Aug.- Apr.)	72 students	Jointly sponsored with a partner institution, the University of British Columbia (UBC) in Vancouver, this program intends to improve students' academic and English skills and develop internationally minded individuals through a unique curriculum jointly developed by Ritsumeikan and UBC and by experiencing life in Canada.
International PBL Program in ASEAN Countries	1 semester (Aug. - Jan.)	2 countries 6 universities 2 - 5 students to each	This is an education program focusing on "Project/Problem-Based Learning (PBL)" to develop flexible thinking in order to set tasks and solutions. By accepting students from a variety of countries and regions, a diverse range of students are able to work collectively to solve the numerous policy and social issues facing ASEAN countries and Japan. This program looks to not only offer opportunities to study abroad in Thailand or Indonesia, but also provide an integrated program that includes pre-departure preparation and post-completion studies.
Exchange Program	1 semester/ 1 year	1-5 students to each partner university	Students study abroad for one semester or one year at one of RU's student exchange partner institutions (140 universities in 31 countries and regions). Spring departure and fall departure are available.
Dual Degree Program	2 years	2 students (AY2019)	Students take courses in their major at both universities, and in approximately 4 years, upon graduation, are able to obtain bachelor degrees from both institutions (American University, Suffolk University, or University of Alberta).

With over 100 years of tradition and history, the Ritsumeikan Academy opened APU in April 2000 as Japan's first genuine international university.

APU's philosophy is to create a university campus that produces graduates with the skills they need to contribute to international society based on the vision of Freedom, Peace, and Humanity, International Mutual Understanding, and the Future Shape of the Asia Pacific Region. The APU campus is a truly multicultural and multilingual environment with half of the student population made up of international students from around the world and an equally diverse faculty. Furthermore, the unique Japanese / English bilingual education system allows students to develop high levels of language proficiency while also removing the language barrier and making it possible for outstanding young people around the world to study and earn a degree in Japan. This international learning environment reflects the commitment APU students and staff have to deepening mutual understanding and overcoming differences in race, religion, and culture.

APU has welcomed international students from 155 different countries and regions since its inception, and currently hosts international students from 94 countries and regions on campus. (As of May 1, 2021)

Alumni Network

This international network of 37 chapters includes more than 20,060 graduates, and is a valuable asset to the University.

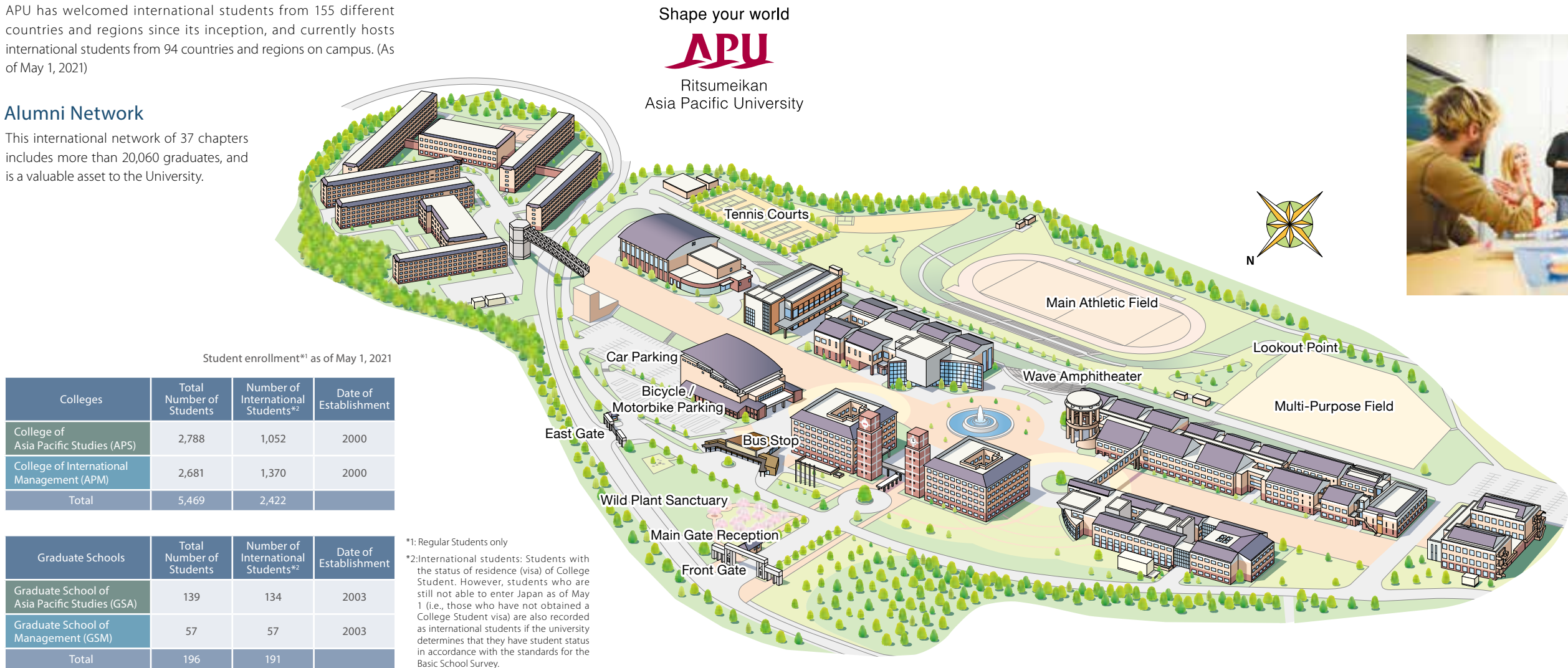


Ritsumeikan Asia Pacific University

Address: 1-1 Jumonjibaru, Beppu, Oita 874-8577
URL: <https://en.apu.ac.jp/>

A Truly International Environment

		Degree	Division / Specialization
Colleges	College of Asia Pacific Studies (APS)	Bachelor of Social Science	<ul style="list-style-type: none"> Environment & Development Hospitality & Tourism International Relations & Peace Studies Culture, Society & Media
	College of International Management (APM)	Bachelor of Business Administration	<ul style="list-style-type: none"> Strategic Management & Organization Marketing Accounting & Finance Innovation & Economics
Graduate Schools	Graduate School of Asia Pacific Studies (GSA)	Master of Science in Asia Pacific Studies	<ul style="list-style-type: none"> International Relations Society and Culture
		Master of Science in International Cooperation Policy	<ul style="list-style-type: none"> International Public Administration Public Health Management Sustainability Science (includes International Material Flow Management program) Tourism and Hospitality Development Economics
	Graduate School of Management (GSM)	Master of Business Administration (MBA)	<ul style="list-style-type: none"> Japanese Management Accounting and Finance Marketing and Management Innovation and Operations Management



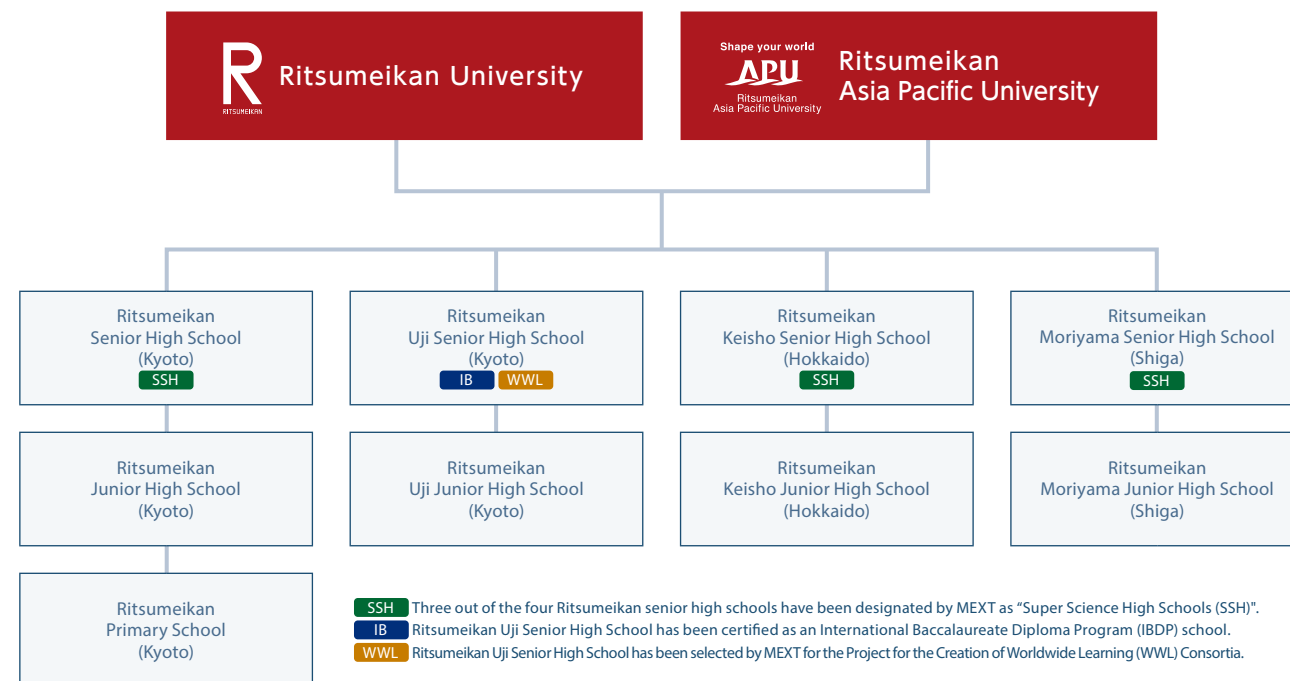
Ritsumeikan Academy's Integrated Primary and Secondary Education

The Ritsumeikan Trust is comprised of two universities, four senior high schools, four junior high schools, and one primary school. Educational institutions with academic tie-up agreements (partner schools) with Ritsumeikan University and Ritsumeikan Asia Pacific University offer bridge "Ritsumeikan Courses." Each affiliated school, starting with an integrated 12-year education system in a 4-4-4 format of primary, middle and high schools, offers a distinctive education through initiatives such as: offering an overseas exchange program from primary 5th grade, and International Baccalaureate courses for those planning to study abroad; selection by MEXT for the Project for the Creation of Worldwide Learning (WWL) Consortia; provision of a Super Science High School framework for nurturing science and technology human resources; and provision of advanced ICT education. The Ritsumeikan Trust, by enhancing such integrated education, aims to nurture people who can succeed as righteous

and ethical global citizens by developing a rich personality on sound scholastic ability.



Organizational Chart of the Ritsumeikan Academy's Integrated Primary and Secondary Education



Number of Students:

As of May 1, 2021

School Name	Ritsumeikan Senior High School	Ritsumeikan Uji Senior High School	Ritsumeikan Keisho Senior High School	Ritsumeikan Moriyama Senior High School	Ritsumeikan Junior High School	Ritsumeikan Uji Junior High School	Ritsumeikan Keisho Junior High School	Ritsumeikan Moriyama Junior High School	Ritsumeikan Primary School
Total Number of Students	1,090	1,167	966	1,026	772	540	573	555	707
Total	7,396								

Ritsumeikan Primary School

Kyoto City

The primary school was founded in 2006 with the motto of "raising children to be globally minded." Since then, the school has striven to produce students who can think for themselves and shape the future based on the four educational pillars of i) establishing a definitive model of education, ii) raising global citizens, iii) nurturing open-mindedness, and iv) cultivating ethics and individuality. We start teaching students English and ICT skills from the first year, and we emphasize the importance of learning that exposes children to authentic global experiences through various out-of-class training programs including the World Week event where students learn about the world's diversity together with the international students of APU.



Ritsumeikan Junior High School / Ritsumeikan Senior High School

Nagaokakyo City, Kyoto Prefecture

Having received an SSH designation for the fifth time in a row, Ritsumeikan Junior and Senior High School is promoting the creation of a system to leverage its international networks to develop global human resources for the fields of science and mathematics. Focused on international education and cutting-edge science education, the school undertakes a range of initiatives to provide students with the ability to cooperate with a diverse array of classmates and counterparts across national, cultural, and linguistic boundaries. The school also implements its part of the 12-year integrated education that begins in the primary school, and it provides education that aims to cultivate individuals who can create a new era and contribute to the future.



Ritsumeikan Uji Junior High School / Ritsumeikan Uji Senior High School

Uji City, Kyoto Prefecture

Ritsumeikan Uji Senior High School has been selected by the Ministry of Education, Culture, Sports, Science and Technology to be a hub school for the Project for the Creation of Worldwide Learning (WWL) Consortia and is aiming to cultivate students' strengths so that they can play an active role in the future Japanese society, "Society 5.0". Taking advantage of being attached to a university, Ritsumeikan Uji Junior and Senior High School aims to be the top international education school in Japan. Distinctive educational programs include the International Baccalaureate Diploma Program (IBDP) as well as exchange programs and immersion programs. The school is also active in extracurricular activities and social contribution activities at a national level.



Ritsumeikan Keisho Junior High School / Ritsumeikan Keisho Senior High School

Ebetsu City, Hokkaido

Rooted in its educational goal of producing globally competitive 18-year-olds, Ritsumeikan Keisho Junior and Senior High School provides education with a global perspective that makes students constantly ask themselves who they are learning and living for. Designated as an SSH and SGH (through AY2019) by the Ministry of Education, Culture, Sports, Science and Technology, the school aims to cultivate human resources for science and technology and the global leaders of the future.



Ritsumeikan Moriyama Junior High School / Ritsumeikan Moriyama Senior High School

Moriyama City, Shiga Prefecture

Designated as a "Super Science High School (SSH)" and a UNESCO Affiliated School, Ritsumeikan Moriyama Junior and Senior High School utilizes its rich Information and Communication Technology (ICT) environment to the fullest to produce a new style of inquiry and output learning. With Junior, Senior, University and Graduate education that is connected and BKC's science and engineering colleges at its core, on top of the existing junior and senior high school Academia Courses a new high school Global Course was established to work with the Frontier Course, which aims to help students enter the difficult-to-get-into universities. We aim to educate students to become global science leaders and contribute to the peaceful, democratic development of the international community.



Enrollment (Degree-Seeking Students, as of May 1, 2021)	
Ritsumeikan University	
Undergraduate Students	32,467
Graduate Students	3,677
Master's Programs	2,606
Doctoral Programs	596
5-year Doctoral Programs	176
4-year Doctoral Programs	12
Professional Degree Programs	287
International Students (included in total enrollment figures for RU)	2,620
Undergraduate Students	1,602
Graduate Students	1,018
Ritsumeikan Asia Pacific University	
Undergraduate Students	5,469
Graduate Students	196
International Students(included in total enrollment figures for APU)	2,613
Undergraduate Students	2,422
Graduate Students	191
Affiliate School Students	
Total:	7,396

Total Number of Alumni (as of March 31, 2021) Including "Jusotsu"* *When students graduate/finish multiple colleges or graduate schools. *Excluding thesis doctoral degrees.	
Total Number of Ritsumeikan University Graduates	411,200
Total Number of Ritsumeikan Asia Pacific University Graduates	20,059

Faculty and Staff (as of May 1, 2021)	
Ritsumeikan University	
Faculty Members ^{*1}	1,414
Professors	811
Associate Professors	268
Lecturers with Non-Fixed Term Employment	20
Lecturers with Fixed Term Employment	34
Contract Lecturers	121
Assistant Professors	149
Administrative Assistants	11
Visiting Professors ^{*2}	238

Ritsumeikan Asia Pacific University	
Faculty Members ^{*1}	166
Professors	64
Associate Professors	36
Tenured Senior Lecturers	18
Contract Lecturers	41
Assistant Professors	7
Visiting Professors ^{*2}	44

*1: Does not include part-time instructors.
*2: Is not included in total faculty Members.

Affiliate Schools	
Faculty Members	606

* Ritsumeikan University faculty serve as the Principal of Ritsumeikan Primary School

Total Administrative Staff in the Ritsumeikan Trust	1,423
Full-Time	734
Contract*	689

* Including specific Ritsumeikan University professional staff and specific APU staff

Graduate Degrees Conferred in the 2020 Academic Year	
Ritsumeikan University	
Doctoral Degrees	92
Master's Degrees	1,173
Juris Doctors	30
Master of Business Administration	60
Master of Professional Teacher Education	24
Ritsumeikan Asia Pacific University	
Doctoral Degrees	3
Master's Degrees	101

Facilities and Resources (as of March 31, 2021)	
Areas of School Buildings and Campuses (all Ritsumeikan Academy schools)	
Total Area of School Buildings	832,114.03 m ²
Total Area of Campuses	2,320,369.76 m ²

Books Owned (as of March 31, 2021)	
Ritsumeikan University Libraries	
	3,385,373
Japanese and Chinese	2,379,879
Western languages	1,005,494
Ritsumeikan Asia Pacific University Libraries	
	236,758
Japanese and Chinese	134,057
Western languages	102,701

*Digital media not included.

Funding from Outside Institutions (as of March 31, 2021)		
Ritsumeikan University (Unit : JPY)		
2020 Academic Year	Number	Amount
Public Research Funding		
Grants-in-Aid for Scientific Research (MEXT / JSPS) ^{*1}	751	1,400,220,000
Other Public Research Funding	143	1,219,272,274
Research Funding for Industry-Academia Cooperation		
Contracted Research	236	332,684,111
Joint Research	172	158,749,096
Grants and Subsidies etc.	80	63,876,250
Private Research Founding	129	160,117,524
Revenue from Patents etc ^{*2}	26	4,630,392
Other Revenue ^{*3}	31	12,709,105
Total	1,568	3,352,258,752

*1: Including Grant-in-Aid for JSPS Fellows and fund for the Promotion of Joint International Research (Fostering Joint International Research) .

*2: Royalties, Licensing and Transfer Fees.

*3: Revenue from Research Consortium Membership Dues, Rental Fee for SR Center by Non-university Personnel.

Ritsumeikan University International Students

(as of May 1, 2021)

Country/Area	Degree-Seeking Students		Non-Degree Exchange Program Students	Total
	Under-graduate	Graduate		
Asia				
1 China	856	761	56	1,673
2 South Korea	492	26	46	564
3 Indonesia	61	36	12	109
4 Taiwan	31	20	1	52
5 Vietnam	25	21	0	46
6 India	22	16	0	38
7 Thailand	7	10	0	17
8 Myanmar	6	10	0	16
9 Hong Kong	13	2	0	15
10 Bangladesh	1	13	0	14
11 Malaysia	13	1	0	14
12 Pakistan	1	6	0	7
13 Singapore	6	0	0	6
14 Nepal	1	5	0	6
15 Laos	0	6	0	6
16 Philippines	2	3	0	5
17 Mongolia	3	1	1	5
18 Cambodia	0	4	0	4
19 Bhutan	0	4	0	4
20 Sri Lanka	2	0	0	2
21 Macau	0	2	0	2
22 Tajikistan	0	1	0	1
Subtotal	1,542	948	116	2,606
Middle East				
23 Afghanistan	0	7	0	7
24 Saudi Arabia	2	2	0	4
25 Turkey	2	2	0	4
26 U.A.E.	2	0	0	2

Country/Area	Degree-Seeking Students		Non-Degree Exchange Program Students	Total
	Under-graduate	Graduate		
27 Iran	1	0	0	1
Subtotal	7	11	0	18
Africa				
28 Egypt	1	4	0	5
29 Uganda	3	1	0	4
30 Nigeria	1	3	0	4
31 Ghana	0	3	0	3
32 South Africa	1	1	0	2
33 Cote d'Ivoire	0	1	0	1
34 Zambia	0	1	0	1
35 Zimbabwe	0	1	0	1
36 Senegal	0	1	0	1
37 Somalia	0	1	0	1
38 Namibia	1	0	0	1
39 Mozambique	0	1	0	1
Subtotal	7	18	0	25
North Amerika & South America				
40 U.S.A	26	12	5	43
41 Canada	1	0	0	1
42 Colombia	0	1	0	1
43 Chile	0	1	0	1
44 Paraguay	1	0	0	1
45 Peru	0	1	0	1
46 Honduras	0	1	0	1
47 Mexico	1	0	0	1
Subtotal	29	16	5	50
Oceania				
48 Australia	1	0	0	1
49 New Zealand	1	0	0	1

* International students: Students with the status of residence (visa) of College Student. However, students who are still not able to enter Japan as of May 1 (i.e., those who have not obtained a College Student visa) are also recorded as international students if the university determines that they have student status in accordance with the standards for the Basic School Survey.

Ritsumeikan Asia Pacific University Students

(as of May 1, 2021)

Country/Area		Under-graduate	Graduate	Non-Degree Students	Total
Asia	1 South Korea	512	1	1	514
	2 China	371	14	3	388
	3 Indonesia	372	19	5	396
	4 Vietnam	288	11	0	299
	5 Thailand	200	6	0	206
	6 Bangladesh	99	12	0	111
	7 Taiwan	89	1	1	91
	8 India	58	12	0	70
	9 Nepal	55	1	0	56
	10 Mongolia	52	2	0	54
	11 Sri Lanka	39	5	0	44
	12 Myanmar	15	11	0	26
	13 Malaysia	22	1	1	24
	14 Philippines	13	2	0	15
	15 Cambodia	12	1	0	13
	16 Hong Kong	11	0	2	13
	17 Pakistan	5	8	0	13
	18 Singapore	7	1	0	8
	19 Timor-Leste	0	5	0	5
	20 Maldives	0	2	0	2
	21 Laos	0	2	0	2
	Subtotal	2,220	117	13	2,350
Middle East	22 Afghanistan	1	10	0	11
	23 Iran	3	0	0	3
	24 Israel	2	0	0	2
	25 Syrian	0	2	0	2
	26 Yemen	1	0	0	1
	27 Turkey	1	0	0	1
	28 U.A.E	0	1	0	1
	29 Palestine	0	1	0	1
	Subtotal	8	14	0	22
Africa	30 Kenya	8	1	0	9
	31 Nigeria	3	4	0	7
	32 Somalia	4	2	0	6
	33 Ethiopia	1	3	0	4

Country/Area		Under-graduate	Graduate	Non-Degree Students	Total
Africa	34 Rwanda	3	0	0	3
	35 Uganda	2	1	0	3
	36 Ghana	2	1	0	3
	37 Liberia	2	1	0	3
	38 Mozambique	1	2	0	3
	39 Zimbabwe	2	0	0	2
	40 Morocco	2	0	0	2
	41 Botswana	1	1	0	2
	42 Malawi	1	1	0	2
	43 South Sudan	1	1	0	2
North Amerika & South America	44 Egypt	0	2	0	2
	45 Angola	1	0	0	1
	46 Cote d'Ivoire	1	0	0	1
	47 Sierra Leone	1	0	0	1
	48 Tanzania	1	0	0	1
	49 Mauritius	1	0	0	1
	50 Lesotho	1	0	0	1
	51 South Africa	1	0	0	1
	52 Guinea-Bissau	0	1	0	1
	53 Chad	0	1	0	1
Oceania	Subtotal	40	22	0	62
	54 U.S.A	33	3	0	36
	55 Canada	5	1	0	6
	56 Ecuador	3	0	0	3
	57 Brazil	2	0	0	2
	58 Barbados	1	0	0	1
	59 Peru	0	1	0	1
	60 Mexico	0	1	0	1
	61 Argentine	0	0	1	1
	Subtotal	44	6	1	51
Oceania	62 Australia	7	0	0	7
	63 Samoa	3	1	0	4
	64 Fiji	2	2	0	4
	65 New Zealand	2	0	0	2
	66 Micronesia	2	0	0	2

Country/Area	Degree-Seeking Students		Non-Degree Exchange Program Students	Total
	Under-graduate	Graduate		
50 Vanuatu	0	1	0	1
Subtotal	2	1	0	3
Europe				
51 Kyrgyz	0	10	0	10
52 U.K.	5	1	3	9
53 Germany	2	1	3	6
54 Russian	2	1	1	4
55 France	1	1	1	3
56 Italy	0	1	1	2
57 Czech	0	1	1	2
58 Hungary	0	2	0	2
59 Bulgaria	0	2	0	2
60 Romania	0	0	2	2
61 Ukraine	0	1	0	1
62 Uzbekistan	1	0	0	1
63 Netherlands	0	1	0	1
64 Switzerland	1	0	0	1
65 Sweden	1	0	0	1
66 Spain	0	1	0	1
67 Slovenia	0	1	0	1
68 Norway	1	0	0	1
69 Finland	0	0	1	1
70 Belgium	1	0	0	1
71 Poland	0	0	1	1
Subtotal	15	24	14	53
Total	1,602	1,018	135	2,755
Kinugasa Campus	568	338	114	1,020
Biwako-Kusatsu Campus	675	352	4	1,031
Osaka Ibaraki Campus	359	328	17	704
Suzaku Campus	—	0	0	

*1: "Non-Degree Students" includes non-degree students and special auditing students.

*2: International students: Students with the status of residence (visa) of College Student. However, students who are still not able to enter Japan as of May 1 (i.e., those who have not obtained a College Student visa) are also recorded as international students if the university determines that they have student status in accordance with the standards for the Basic School Survey.

*3: The term "Domestic Students" includes international students with non-japanese nationality possessing status in Japan other than "college student visa".

Europe

Austria	<ul style="list-style-type: none">■ Management Center Innsbruck■ Salzburg University of Applied Sciences■ University of Applied Sciences Technikum Wien
Belgium	<ul style="list-style-type: none">■ University for Continuing Education Krems■ Institut supérieur de traducteurs et interprètes (ISTI)■ University of Liege
Bulgaria	<ul style="list-style-type: none">■ University of National and World Economy
Croatia	<ul style="list-style-type: none">■ Zagreb School of Economics and Management
Cyprus	<ul style="list-style-type: none">■ The Cyprus University of Technology
Czech	<ul style="list-style-type: none">■ Charles University
Denmark	<ul style="list-style-type: none">■ Masaryk University■ Copenhagen Business School■ University of Copenhagen
Finland	<ul style="list-style-type: none">■ University of Southern Denmark■ Tampere University of Applied Sciences■ Tampere University of Technology■ University of Helsinki
France	<ul style="list-style-type: none">■ University of Turku■ Aix-Marseille University■ Bordeaux Montaigne University■ Ecole Normale Supérieure■ ESCEM School of Business and Management■ ICN Business School■ Jean Moulin Lyon 3 University■ Paris University■ Sciences Po Bordeaux■ Sciences Po Lille■ Strasbourg University■ Toulouse 1 Capitole University■ University Toulouse - Jean Jaurès■ ASKO EUROPA-STIFTUNG■ Augsburg University of Applied Sciences■ Bremen University of Applied Sciences■ FH Aachen University of Applied Sciences■ Film University Babelsberg KONRAD WOLF■ Humboldt University of Berlin■ Jacobs University■ Julius Maximilian University of Würzburg■ Nuremberg Institute of Technology■ Saarland University■ Trier University of Applied Sciences■ University of Cologne■ University of Freiburg■ University of Münster■ University of Tübingen■ Zeppelin University
Germany	<ul style="list-style-type: none">■ Budapest Business School■ Budapest University of Technology and Economics■ Eotvos Lorand University■ University of Pécs■ University of Iceland■ Dublin City University■ Ca'Foscari University of Venice■ Catholic University of the Sacred Heart■ Sapienza University of Rome■ University of Bologna■ Politecnico di Milano■ University of Cassino and Southern Lazio■ University of Turin■ University of Florence■ The University of Gastronomic Sciences■ University of Naples "L'Orientale"
Hungary	<ul style="list-style-type: none">■ Asfendiarov Kazakh National Medical University
Iceland	
Ireland	
Italy	<ul style="list-style-type: none">■ Kazakh Economic University■ Kyrgyz-Turkish Manas University■ Vilnius University■ Leiden University■ Radboud University■ The International Institute of Social Studies of Erasmus University Rotterdam (ISS)■ Tilburg University
Kazakhstan	<ul style="list-style-type: none">■ Inland Norway University of Applied Sciences■ University of Bergen
Kyrgyz	
Lithuania	
Netherlands	<ul style="list-style-type: none">■ Jagiellonian University■ Polish Academy of Sciences■ Polish-Japanese Academy of Information Technology■ SGH Warsaw School of Economics■ Wrocław University of Economics■ ISCTE-Lisbon University Institute■ Romanian-American University■ Far Eastern Federal University■ Institute of Far Eastern Studies of the Russian Academy of Sciences
Norway	
Poland	
Portugal	
Romania	
Russia	

Spain	<ul style="list-style-type: none">■ Institute of Oriental Studies of the Russian Academy of Sciences■ Moscow State Institute of International Relations (University) of the Ministry of Foreign Affairs of the Russian Federation (MGIMO)■ Saint Petersburg University■ Sakhalin State University■ Tomsk State University of Control Systems and Radioelectronics■ Alcala University■ Autonomous University of Barcelona■ IE University■ Saint Louis University, Madrid Campus■ The University of Granada■ The University of the Basque Country■ University of Alicante■ University of Jaen■ University of Santiago de Compostela■ Halmstad University■ Jönköping University■ Linnaeus University■ Lund University■ Malmö University■ Södertörns högskola■ University of Gothenburg
Sweden	<ul style="list-style-type: none">■ Lucerne University of Applied Science and Arts■ Zurich University of Applied Sciences■ Cardiff University■ Centre for Alternative Technology■ King's College London■ Lancaster University■ Royal Holloway and Bedford New College, University of London■ School of Oriental and African Studies, University of London■ The Glasgow School of Art■ The University of Edinburgh■ The University of Manchester■ The University of Sheffield■ The University of Warwick■ University of East Anglia■ University of Hertfordshire■ University of Leeds■ University of Leicester■ University of Nottingham■ University of Reading■ University of Southampton■ University of Sussex■ University of Westminster■ University of York
Switzerland	
U.K.	

Asia

Azerbaijan	<ul style="list-style-type: none">■ ADA University
Bangladesh	<ul style="list-style-type: none">■ Khazar University
Cambodia	<ul style="list-style-type: none">■ University of Dhaka
China	<ul style="list-style-type: none">■ Pannasatra University of Cambodia■ Beihang University■ Beihua University■ Beijing Institute of Technology■ Beijing Language and Culture University■ Changchun University of Science and Technology■ ChangChun University of Technology■ Changsha University of Science and Technology■ China Enterprise Confederation■ China Executive Leadership Academy Pudong■ China University of Political Science and Law■ Chongqing Jiaotong University■ Chongqing Medical University■ Chongqing Municipal Education Commission■ Chongqing Technology and Business University■ Chongqing Three Gorges University■ Chongqing University of Science and Technology■ Chongqing University of Technology■ Dalian Education Bureau■ Dalian Education University■ Dalian Jiaotong University■ Dalian Municipal People's Government■ Dalian Neusoft University of Information■ Dalian Polytechnic University■ Dalian Software Park Co., LTD.■ Dalian University of Foreign Languages

Dalian University of Technology	<ul style="list-style-type: none">■ Dalian University of Technology■ Department of Education of Zhejiang Province■ Dongbei University of Finance & Economics■ East China Normal University■ East China University of Science and Technology■ Fudan University■ Fuzhou University■ Guangxi Normal University■ Harbin Institute of Technology■ Hebei University of Technology■ Huazhong University of Science and Technology■ Jiangxi Normal University■ Jiangxi University of Finance and Economics■ Jilin University■ Jinan University■ Nanjing Normal University■ Nanjing University■ Nanjing University of Aeronautics and Astronautics■ Nankai University■ Southern University of Science and Technology■ Northeast Normal University■ Northeastern University■ Northwest A&F University■ Northwest Normal University■ Peking University■ Qingdao University■ Qinghai Normal University■ Renmin University of China■ Shaanxi Normal University■ Shandong University■ Shanghai Academy of Social Sciences■ Shanghai Jiao Tong University■ Shanghai University■ Shanghai University of Finance and Economics■ Shanghai University of International Business and Economics■ Shenyang Normal University■ Shenzhen University■ Sichuan International Studies University■ Sichuan University■ Soochow University■ South China University of Technology■ Southwest Jiaotong University■ Southwest University■ Southwest University of Political Science & Law■ Southwestern University of Finance and Economic■ Sun Yat-sen University■ Taiyuan University of Technology■ Tianjin University■ Tonghua Normal University■ Tongji University■ Tsinghua University■ University of International Business and Economics■ University of Science and Technology of China■ Wuhan University■ Xiamen University■ Xi'an Jiaotong University■ Xinjiang Normal University■ Xinjiang University■ Yunnan Academy of Social Sciences■ Zhejiang A & F University■ Zhejiang Gongshang University■ Zhejiang University■ The Chinese University of Hong Kong■ The Hong Kong Polytechnic University■ The University of Hong Kong■ Institute for Tourism Studies, Macau■ University of Macau■ Global Development Network■ Indian Institute of Technology Hyderabad■ Indian Institute of Technology Kanpur■ Jawaharlal Nehru University■ Nitte Education Trust■ University of Delhi■ University of Madras■ University of Mysore■ University of Pune■ Andalas University■ Bandung Institute of Technology
Hong Kong	
Macau	
India	
Indonesia	

Korea	<ul style="list-style-type: none">■ Gadjah Mada University■ Indonesia Institute of the Arts Yogyakarta■ Islamic University of Indonesia■ Local Government of West Sumatra■ Padjadjaran University■ Diponegoro University■ State University of Surabaya■ Syarif Hidayatullah State Islamic University Jakarta■ Trisakti University■ University of Brawijaya■ University of Indonesia■ Aju University■ Chonbuk National University■ Chonnam National University■ Chung-Ang University■ Daegu University■ Dong-A University■ Dongguk University■ Dongseo University■ Ewha Womans University■ Gachon University■ Hallym University■ Hankuk University of Foreign Studies■ Hanyang University■ Inha University■ Jeju National University■ Korea Maritime and Ocean University■ Korea National Sport University■ Korea University■ Kyung Hee University■ Kyungpook National University■ Pai Chai University■ Pohang University of Science and Technology■ Pusan National University■ Sangmyung University■ Seoul National University■ Seoul Women's University■ Sogang University■ Sookmyung Women's University■ Sungkyunkwan University■ The Catholic University of Korea■ The University of Seoul■ University of Ulsan■ Yeungnam University■ Yonsei University
Laos	<ul style="list-style-type: none">■ National University of Laos
Malaysia	<ul style="list-style-type: none">■ Institute of Strategic and International Studies (ISIS) Malaysia■ Universiti Malaysia Sabah■ Universiti Putra Malaysia■ Universiti Teknologi Malaysia■ University Malaysia Sarawak■ University of Malaya■ University of Science Malaysia■ Academy of Management■ Mongolian University of Science and Technology■ National University of Mongolia■ Lahore University of Management Sciences■ Ateneo de Manila University■ De La Salle University■ SEAMEO SEARCA (Southeast Asian Regional Center for Graduate Study and Research in Agriculture)■ University of Asia and the Pacific■ University of the Philippines■ Nanyang Technological University■ National University of Singapore■ Singapore Management University■ Chartered Institute of Management Accountants (Sri Lanka Division)■ Information & Communication Technology Agency of Sri Lanka■ National Science Foundation■ University of Colombo■ University of Ruhuna■ Academia Sinica■ Feng Chia University■ Fu Jen Catholic University■ National Chengchi University■ National Chiao Tung University■ National Kaohsiung First University of Science and Technology■ National Sun Yat-sen University■ National Taichung University of Education■ National Taipei University of Technology■ National Taiwan Normal University■ National Taiwan University
Mongolia	
Pakistan	
Philippines	
Singapore	
Sri Lanka	
Taiwan	

Thailand	<ul style="list-style-type: none">■ Shih Hsin University■ Southern Taiwan University of Science and Technology (STUST)■ Tamkang University■ Tunghai University■ Yuan Ze University■ Burapha University■ Chiang Mai University■ Chulalongkorn University■ KASETSART UNIVERSITY■ Khon Kaen University■ Mahidol University■ National Institute of Development Administration■ Siam University■ Thai-Nichi Institute of Technology■ Thammasat University■ The Federation of Thai Industries■ Hanoi Medical University■ Hanoi National University of Education■ Hanoi University of Science and Technology■ Ho Chi Minh City University of Technology■ Ho Chi Minh University of Pedagogy■ Hue University■ Hue University of Agriculture and Forestry■ Ministry of Education and Training Vietnam■ The Saigon International University■ The University of Danang■ University of Engineering and Technology, Vietnam National University, Hanoi (VNU)■ University of Foreign Languages, Hue University■ Vietnam National University, Hanoi■ Vietnam National University, Ho Chi Minh City■ VNU Ho Chi Minh City University of Social Sciences and Humanities■ VNU University of Social Sciences and Humanities, Hanoi
Vietnam	

Middle East

Iran	<ul style="list-style-type: none">■ Imam Sadiq University■ Shahid Beheshti University
Jordan	<ul style="list-style-type: none">■ University of Jordan
U.A.E.	<ul style="list-style-type: none">■ Higher Colleges of Technology

Africa

Botswana	<ul style="list-style-type: none">■ University of Botswana
Egypt	<ul style="list-style-type: none">■ Egypt-Japan University of Science and Technology (E-JUST)
Kenya	<ul style="list-style-type: none">■ Jomo Kenyatta University of Agriculture and Technology
Nigeria	<ul style="list-style-type: none">■ University of Benin
South Africa	<ul style="list-style-type: none">■ University of Johannesburg■ University of Pretoria

Oceania

Australia	<ul style="list-style-type: none">■ Australian National University■ Charles Sturt University■ Flinders University■ Griffith University■ La Trobe University■ Macquarie University■ Queensland University of Technology■ The University of Adelaide■ The University of Queensland■ The University of Sydney■ The University of Western Australia■ University of Melbourne■ University of New South Wales■ University of the Sunshine Coast■ The University of the South Pacific■ Asia New Zealand Foundation■ Auckland University of Technology■ Massey University■ Otago Polytechnic■ The University of Auckland■ Victoria University of Wellington■ National University of Samoa
Fiji	
New Zealand	
Samoa	

North America

Canada	<ul style="list-style-type: none">■ HEC Montreal■ Okanagan College■ Quest University Canada■ Simon Fraser University■ The University of British Columbia■ University of Alberta■ University of the Fraser Valley
---------------	--

U.S.A	<ul style="list-style-type: none">■ University of Victoria■ Alfred University■ American University■ Appalachian State University■ Butler University■ California Institute of Integral Studies (CIIS)■ California State University, Fresno■ California State University, Long Beach■ California State University, Monterey Bay■ Chapman University■ College of Staten Island, The City University of New York■ Depaul University■ Fairleigh Dickinson University■ Florida International University■ Georgetown University■ Georgia College & State University■ Grand Valley State University■ Illinois College■ James Madison University■ Minnesota State University Moorhead■ Ohio Northern University■ Oklahoma City University■ Old Dominion University■ Rensselaer Polytechnic Institute■ Rutgers, The State University of New Jersey■ San Diego State University■ Simmons College■ St. Edward's University■ State University of New York College at Plattsburgh■ Suffolk University■ Tennessee Tech University■ The Georgia Institute of Technology■ The University of Alabama■ The University of California, Berkeley■ The University of Mississippi■ The University of New Mexico■ The University of North Carolina at Greensboro■ The University of Oklahoma■ University at Buffalo, The State University of New York■ University of California, Davis■ University of Hawaii■ University of Minnesota, Twin Cities■ University of Montana■ University of North Texas■ University of Pittsburgh■ University of San Francisco■ University of Southern California■ University of Washington■ Vanderbilt University■ Vassar College■ Western Michigan University■ Worcester Polytechnic Institute
--------------	---

Latin America

Argentina	<ul style="list-style-type: none">■ Argentine University of Enterprise■ National University of La Plata■ Rosario National University■ Torcuato Di Tella University■ Cruzeiro do Sul University■ University of Sao Paulo■ University of Los Andes■ Universidad de La Habana■ Universidad Del Pacifico■ Northern Caribbean University■ Ibero-American University■ Monterrey Institute of Technology and Higher Education■ National Polytechnic Institute■ The College of Mexico■ University of Monterrey■ ESAN Graduate School of Business■ National Agrarian University at La Molina■ National University of Engineering■ Peruvian Diplomatic Academy■ Peruvian University Cayetano Heredia■ Pontifical Catholic University of Peru■ University of Lima■ University of the Pacific
Brazil	
Colombia	
Cuba	
Ecuador	
Jamaica	
Mexico	
Peru	

Others

	<ul style="list-style-type: none">■ Asian Development Bank■ United Nations Volunteers Programme■ Le Cordon Bleu International Bv■ Le Cordon Bleu Australia PTY LTD
--	---



For more information, visit: <http://en.ritsumeikan-trust.jp/>