



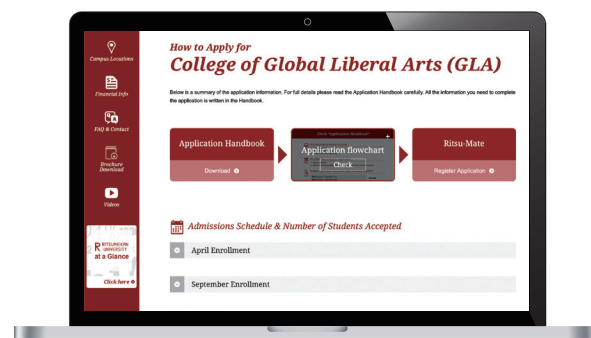
## Locations

[en.ritsumei.ac.jp/e-ug/why\\_rueug/great\\_locations.html/](http://en.ritsumei.ac.jp/e-ug/why_rueug/great_locations.html/)



## How to Apply

[en.ritsumei.ac.jp/e-ug/](http://en.ritsumei.ac.jp/e-ug/)



1. Download and Consult Application Handbook



2. Activate Ritsui-Mate account



3. Upload + Send Documents



4. Pay Application Fee

\*Please visit our website for details.



## Any Questions?

[en.ritsumei.ac.jp/e-ug/faq\\_contact/](http://en.ritsumei.ac.jp/e-ug/faq_contact/)



## Watch Videos

[en.ritsumei.ac.jp/e-ug/videos/](http://en.ritsumei.ac.jp/e-ug/videos/)

Connect with Us



ritsumei



ritsumeikanu



@ritsumeikan\_university

## For more information

International Admissions Official Website  
[en.ritsumei.ac.jp/e-ug/](http://en.ritsumei.ac.jp/e-ug/)



**R** RITSUMEIKAN  
UNIVERSITY

International Admissions Office  
Office Hours: 9:00am-5:30pm(JST) Monday to Friday  
E-mail: [hello@st.ritsumei.ac.jp](mailto:hello@st.ritsumei.ac.jp)

Publication Version [March, 2020]

Information in this document is correct and valid as of publication date.  
Interviews and opinions expressed are each individual's and separate of Ritsumeikan University.  
Students' degree major, portrait and report on all pages are correct as of date when interviewed.  
Visit the International Admissions Office website for the latest information.



# R

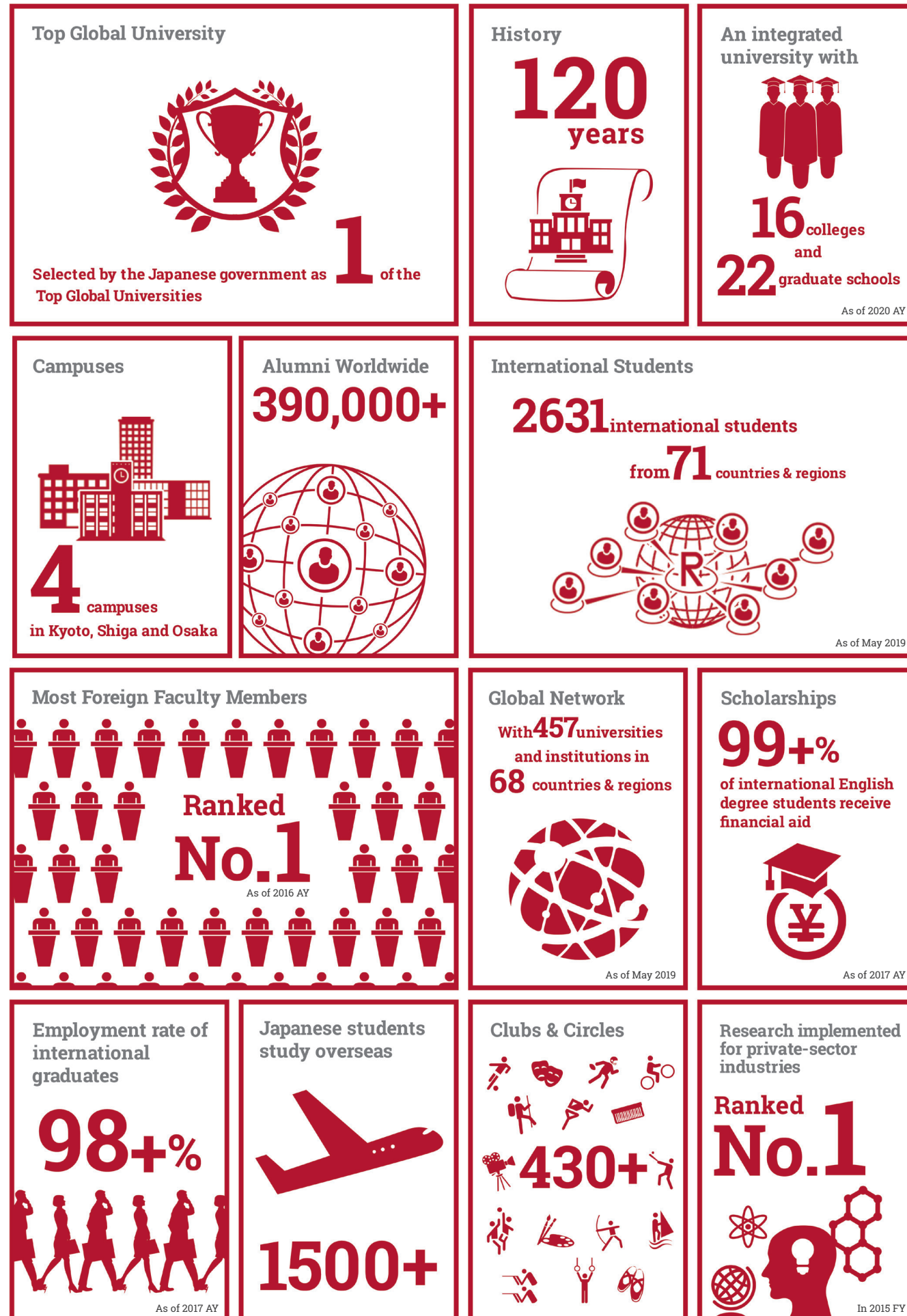
RITSUMEIKAN  
UNIVERSITY

English-medium Undergraduate Programs  
Admissions in 2021

Kyoto, Osaka, Shiga JAPAN



# Why Choose Ritsumeikan?



## English-medium Undergraduate Programs (4-year full time)

Programs	Degree Offered	Location	Enrollment	Yearly Intake*
Dual /Joint Degrees				
College of Global Liberal Arts <b>Dual Degree Program with The Australian National University</b>	Bachelor of Global Liberal Arts + Bachelor of Asia-Pacific Affairs	Osaka + Canberra	April September	100**
College of International Relations <b>American University-Ritsumeikan University Joint Degree Program</b>	Bachelor of Arts in Global International Relations	Kyoto + Washington D.C.	April	25***
Single Degrees				
College of International Relations <b>Global Studies Major</b>	Bachelor of Arts in International Relations	Kyoto	April September	100
College of Policy Science <b>Community and Regional Policy Studies Major</b>	Bachelor of Arts in Policy Science	Osaka	September	40
College of Information Science and Engineering <b>Information Systems Science and Engineering Course</b>	Bachelor of Engineering	Shiga	April	50

\*Subject to change. Application methods apply. Consult each Application Handbook for details.  
 \*\*The intake includes 10 students enrolling into ANU  
 \*\*\*The intake includes 5 students enrolling into AU

**KYOTO** | Kinugasa Campus



**OSAKA** | Osaka Ibaraki Campus



**SHIGA** | Biwako-Kusatsu Campus





“The best thing so far about being a student here is the chance it has given me to learn about the marvellous culture of Japan by spending time with Japanese friends.”

Abu Baker Khan  
Pakistan, Community and Regional Policy Studies  
Major



“Ritsumeikan University has many organizations that help international students so I think you won’t feel left out.”

Woranipit Chidsin  
Thailand, Information Systems Science and  
Engineering Course

## Student Services

- Career Planning
- Academic Guidance
- Visa Application
- Housing and Accommodation Support
- Study Abroad Support
- On-Campus Medical Support

Each College also offers students with guidance and support from higher-year students through Orientation Coordinators (Orior). Students are encouraged to engage in the hundreds of student sport and cultural organizations and clubs.

Learn  
More



en.ritsumeikan.ac.jp/lifecareer/  
student-support/



## Academic Calendar

3	March	New Student Orientation (April Enrollment)
4	April	Start of Spring Semester Entrance Ceremony (April Enrollment)
7	July	End of Spring Semester Final Exams (Spring Semester)
8	August	Summer Break
9	September	Start of Fall Semester New Student Orientation (September Enrollment) Entrance Ceremony (September Enrollment)
11	November	Ritsumeikan Festival
12	December	Winter Break
1	January	End of Fall Semester Final Exams (Fall Semester)
2	February	Spring Break

## Housing for International Students

- Accommodation in a furnished apartment
- Student dormitory

Housing Options  
Off-campus apartments and student dormitories are available for international students.

Kyoto - International House (Taishogun, Tokiwa, Utano)  
Shiga - BKC International House  
Osaka - OIC International House  
- OIC Global House (On-campus, available to international and Japanese students in the College of Global Liberal Arts)

Learn  
More



en.ritsumeikan.ac.jp/e-ug/student\_life/



# Life at Ritsumeikan

## Beyond Borders Plaza

Global Commons Focusing on International  
Exchange and Language Learning

Learn  
More



www.bbp.ritsumeikan.ac.jp/en/

## Study Abroad Opportunities

Exchange partners with:  
National University of Singapore  
Yonsei University  
King's College London  
Peking University  
University of Hong Kong  
University of British Columbia  
And many more...

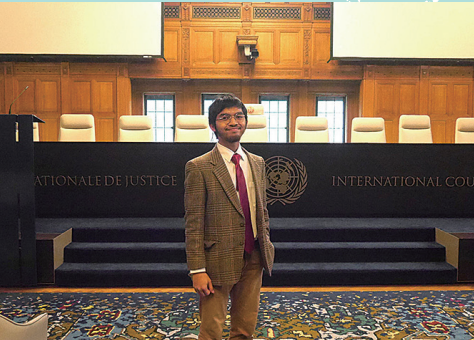
Students have a wide range of opportunities to go on exchange and explore the world through study abroad programs. Ritsumeikan provides students with an array of programs from short term to full 1-year exchanges to meet their study needs.

158

Partner Institutions in

34

countries



“My motivation to join the one-year exchange program in Leiden is primarily academic. I wanted to further my studies in Global Studies, and discover the heritage of Indonesia in the Netherlands, its former colonizer.”

Gilang Al Ghifari Lukman  
Indonesia,  
Global Studies Major



“Even I am an international student at Ritsumeikan University and could learn a lot of things during the 2 years study in Japan, life in America was another new challenge which gave me different aspects of learning.”

Jeong Hyun Park  
South Korea, Global Studies Major

Learn  
More



en.ritsumeikan.ac.jp/e-ug/why\_rueug/opportunities.html/





Dual degree program with  
the Australian National University

College of  
Global Liberal  
Arts [GLA]

Bachelor of Global Liberal Arts (RU) & Bachelor of Asia-Pacific Affairs (ANU)

The College of Global Liberal Arts (GLA) is the first in Japan to provide a college-wide dual degree program in collaboration with the Australian National University (ANU).

PROGRAM DESIGN

GLA provides students with a comprehensive liberal arts education in English required for our globalized times. The undergraduate dual degree program is offered jointly by GLA at RU and the College of Asia & the Pacific (CAP) at ANU. The dual approach will help to develop a competitive foundation for your career: applying your Asia-Pacific-wide experiences, intelligence, and in-depth knowledge to broaden business practices in global corporations. It leads you to proceed to professional careers in the fields of public policy, diplomacy, law, strategic studies, international relations, business administration, design etc., and pursuing specialized academic knowledge at graduate schools in Japan, Australia, and other regions.



Australian  
National  
University



R RITSUMEIKAN  
UNIVERSITY

Learning Schedule

	1 <sup>st</sup> year		2 <sup>nd</sup> year		3 <sup>rd</sup> year		4 <sup>th</sup> year	
April Admissions	Spring 1	Fall 2	Spring 3	Fall 4	Spring 5	Fall 6	Spring 7	Fall 8
	RU Classes		RU Classes +ANU Classes		ANU Classes		RU Classes +ANU Classes	
September Admissions	Fall 1	Spring 2	Fall 3	Spring 4	Fall 5	Spring 6	Fall 7	Spring 8
	RU Classes		RU Classes +ANU Classes	ANU Classes		RU Classes+ANU Classes		

Subject Groups and Course Examples

GLA [RU]	Cosmopolitan Studies	Cultural Studies, Media Studies
	Civilization Studies	Civilization in Global History, Evolution of Market Economy
	Innovation Studies	Knowledge and Innovation, Social Change with AI
	Japanese Studies Cluster	Contemporary Japan, Japan in Global History
CAP [ANU]	Politics and Government	The Politics of China, Indonesia: Politics, Society, and Development
	International Relations and Security	(In)Stability on the Korean Peninsula, Politics of Nuclear Weapons
	Conflict and Peace-building	Leadership and Diplomacy, Environment and Development in the Pacific
	History and Cultural Identity	Economies of Emerging Asia, Islam in Southeast Asia

Why GLA?

1

World-Class Education

Be a part of world-class education and learn with some of the best academics in the Asia-Pacific region. Graduate with two bachelor's degrees from leading universities in Australia and Japan.

2

3 years at RU in Japan + 1 year at ANU in Australia

Experience college life in both Japan, where cutting-edge technology meets tradition, and Australia where excellence in higher education meets multiculturalism.

3

New Liberal Arts for the New Era

Going beyond the boundaries of a traditional liberal arts education, this program focuses on practical training in a broad range of disciplines including cultural studies, management theories, science and technological studies.

4

Truly International Environment

The diverse student body of this program will allow students to foster connections with their peers and academics worldwide. Explore new perspectives and develop global competence.

American University - Ritsumeikan University  
Joint Degree Program [JDP]


College of  
International  
Relations

Bachelor of Arts in Global International Relations

This program was launched on the 30th anniversary of the establishment of the College of International Relations. This course is the first undergraduate degree program between Japan and the United States.

PROGRAM DESIGN


Joint degree programs are collaborative degrees offered by two different universities with educational and student support systems designed to develop graduates whose skills and knowledge are in demand. This new and exciting program offers students a chance to fully immerse themselves in the cultures and learning environments of Japan and the US. Students at both Ritsumeikan University (RU) and American University (AU) will form a cohort within and across academic years, enabling them to learn about each other's cultures and develop their cross cultural communication skills in an interactive learning environment.



R RITSUMEIKAN  
UNIVERSITY



AMERICAN UNIVERSITY  
WASHINGTON, D.C.



Learning Schedule

	1 <sup>st</sup> year		2 <sup>nd</sup> year		3 <sup>rd</sup> year		4 <sup>th</sup> year	
Ritsumeikan University HOME	Spring 1	Fall 2	Spring 3	Fall 4	Spring 5	Fall 6	Spring 7	Fall 8
	RU	RU	RU	AU	AU	AU	AU	RU

Curriculum

Course Category	Core Courses, Foundation Courses, Research Methodology, Foreign Language Courses, Thematic Area Courses, Regional Focus, Capstone Project, Elective
Thematic Areas	In order to learn specialized topics within Global IR systematically, students will choose their primary and secondary areas of focus from: Global and Comparative Governance (GCG) Identity, Race, Gender and Culture (IRGC) Peace, Global Security and Conflict Resolution (PGSCR)

Why JDP?

1

Joint Degree from the Leading IR Faculties in the US and Japan

The College of International Relations (RU) is recognized as one of the top institutions in Japan in the field of international relations. The School of International Services, (AU) is a top-10 school of international affairs in the US. On completion, students will be jointly conferred a Bachelor of Arts degree in Global International Relations from RU and AU.

2

2 Years in Kyoto and 2 Years in Washington D.C.

Kyoto, the ancient capital of Japan and home to 17 UNESCO World Heritage Sites, is a famous international city that attracts more than 1.8 million foreigners each year. Washington D.C., the center of international politics, is an ideal place to study international relations. Students will have first-hand experiences through active learning in these two city environments, exchanging ideas with students coming from all over the world.

3

Jointly Designed Curriculum

The curriculum is designed jointly by RU and AU. Students will study in a coherent academic curriculum in English which enables them to earn a joint degree from a Japanese and a US institution. This is the first program of its kind in Japan. Students will acquire a degree that is unique, distinctive, and highly desirable.

4

Career Opportunities

The degree provides the chance to pursue career opportunities in Japan and the US. Alumni of the College of International Relations have found employment in a wide varieties of companies (trading companies, manufacturing companies, major airlines), institutions (such as embassies, governments), as well as further studies at graduate schools like Oxford, LSE, UBC, University of Tokyo, etc. RU and AU will offer joint career advice in each country to all JDP students.



# Global Studies Major [GS]

College of  
International  
Relations

## Bachelor of Arts in International Relations

The College of International Relations was established in 1988. With more than 30 years of history, the Global Studies Major (GS) started its innovative challenge in 2011. GS offers English curriculums and welcomes students from overseas which add value to our unique and diverse learning environment.

### PROGRAM DESIGN

The program is designed to be flexible, with students able to design their learning programs based on their interests and career goals. In the first year, students take a range of introductory and academic skills courses, which develop a foundation for their studies. From the second year, students start their study of core and area studies courses from the list detailed below. Second year students also take part in the hands-on Global Simulation Gaming, a class taken together with Japanese-based students. They continue to deepen their studies in the third year, particularly through the research focused Advanced Seminar, before writing their graduation thesis in their fourth year.



### Cluster Courses

Governance and Peace cluster	International Law, Peace and Conflict Studies, Security Studies, International Human Rights, International Organizations, Global Political Economy, Comparative and Global Governance
Development and Sustainability cluster	Global Environmental Issues, Development Studies, Microeconomics, International Finance, International Trade and Investment, Global Civil Society and Development
Culture and Society cluster	Cultural Awareness and Communication, Media and Society, Topics in Identity, International Migration, Race and Ethnicity and Modern World, Global Sociology

### Area Studies Courses

Japanese Politics, Japanese Society, Japanese Culture, Japanese Economy, Japan-United States Relations, Special Lecture (Area Studies Courses), Modern Japanese History, Introduction to Area Studies, Advanced Topics in Area Studies, Foreign Relations of Japan, Business Administration in Japan, Korean Studies, Contemporary China, United States Politics and Foreign Policy, Southeast Asian Studies

Learn  
More



How to  
Apply



## Why GS?

1

### One of Japan's Leading International Relations Faculties

The Graduate School of IR is the only full Japanese member of APSIA (Association of Professional Schools of International Affairs). APSIA includes highly advanced universities in 10 countries, such as Harvard University, Yale University, National University of Singapore, and others.

2

### Faculty and Student Diversity

We have faculty members from various countries and regions such as Asia, North America and Europe. In addition, several professors have experience working at the UN, the World Bank, as international journalists, and in a range of other international careers providing guidance to students from over 30 countries around the world.

3

### Japanese Language Studies and Cross-Enrollment between the English-medium and the Japanese-medium Majors

International Students take 6 credits of Japanese language courses in the first year and can take further Japanese courses in the following years. GS students with a high level of Japanese language proficiency can take Japanese IR courses.

4

### Career Opportunities

Graduates have found success in many careers with positions as diplomats, NGO employees, media professionals and also as workers in international business fields. GS alumni often pursue further study to deepen their knowledge at its graduate school but also at other famous schools such as Oxford University, Johns Hopkins University, London School of Economics, University of British Columbia and others.

# Community and Regional Policy Studies Major [CRPS]

College of  
Policy  
Science

## Bachelor of Arts in Policy Science

Since its launch in 1994, the College of Policy Science has grown considerably and it is now a representative of Japan's research in this academic field. Community and Regional Policy Studies started in September 2013.

### PROGRAM DESIGN

In the first and second year, students acquire academic and critical thinking skills, as well as basic knowledge needed to study in the core discipline areas of our program. Several of our courses involve field research with our flagship On-site-Research Project program offering exciting opportunities for research collaboration with other students either in Japan or abroad. As students progress through the program, they continually focus on their studies, gaining more in-depth knowledge and advanced thinking skills in order to prepare for their advanced Policy Seminar and Case Study Seminar courses in their third and fourth year in which students produce a final graduation thesis based on their original research.



### Core Programs

Sustainable Urban Policy	Urban Planning for Sustainable Cities, Community Safety, Housing and Policy, Disaster Mitigation, Systems Analysis
Regional Economy and Development	Development Economics, Regional Development, Economic Institutions, Public Economics, International Trade and Finance
Multi-level Governance	Inter-Government Relations and Cooperation, Global Public Policies, Public Management, Constitutional Law, Social Welfare Policies

Learn  
More



How to  
Apply



## Why CRPS?

1

### Faculty Members from a Variety of Backgrounds

We have faculty members who specialize in natural sciences as well as social scientists. The diversity of teaching staff allows students to not only learn specialized knowledge in various fields, but also how to analyze issues from a variety of perspectives. Small classes enable students to receive detailed instruction from the faculty members.

2

### Practical Experience Conducting Social Surveys and Fieldwork

There are many opportunities in our program to do active field research either in Japan or also abroad. We place great emphasis on practical training, for example in carrying out social surveys and field research. Student-centered classes encourage active participation, lively discussions and dynamic presentations.

3

### Instruction in Research Methods

A prime feature of our program is our focus on building research methods—statistical analysis, as well as quantitative and qualitative research skills. We believe these skills are critical for analyzing policies and practices and to be able to develop effective policy solutions to issues.

4

### Intensive Japanese Language Studies and Exchange with Japanese Students

We offer Japanese language instruction for beginners up to advanced level. Learning Japanese will give students greater opportunities to: study policy science subjects in Japanese; participate in field research in Japan; join extra-curricular activities; do an internship; and perhaps get a part-time job. Learning Japanese to an advanced level could potentially lead to a career within Japan.



# Information Systems Science and Engineering Course [ISSE]

College of Information Science and Engineering

## Bachelor of Engineering

The College of Information Science and Engineering was established in 2004. It is the largest ICT college in Japan that provides education in the main academic fields of computer science.

### PROGRAM DESIGN

Students in the Information Systems Science and Engineering Course develop the information systems engineering skills necessary to work anywhere in the world and bring imagination and technical competence to every kind of project and organization, while also maintaining the powerful benefits of their own unique personalities and cultures. The program lays a foundation in the basics of engineering and the technical competency to work flexibly with continually evolving hardware, software, and user needs.



### Class Examples

Interactive Systems	Human Interface, Ergonomics and Affective Engineering
Systems Engineering	Computer Architecture, Databases, Operating Systems, Computer Networks, Computer Security
Graphics and Visualization	Computer Graphics, Image Processing, Visualization and Computer Art, Advanced Computer Graphics
Distributed and Embedded Systems	Network Systems, Distributed Systems, Embedded Systems, Imperative Programming, Web Information Engineering

### Laboratories

e-Society Laboratory
Affective Engineering and Computer Arts Laboratory
Robot Dynamics and Control Laboratory
Advanced Computer Graphics and Digital Human Laboratory

Learn More



How to Apply

## Why ISSE?

1

### Practice-Oriented

The Information Systems Science and Engineering Course is project-based learning at its best - offering practical, hands-on engineering experience to match the demands of industry leaders in Japan and worldwide. This oriented education is centered around project work throughout the program.

2

### Customizable Education

The Course offers flexible study plans to complement and foster individual abilities in the best possible way. A combination of fundamental classic science courses and interdisciplinary engineering practice disciplines allows students to learn both for and from doing. The learning environment as a whole is designed to develop distinctive talents, embracing diverse personalities who will work together to innovate the future world.

3

### Project Based Learning

Students join engineering projects from their first year study whilst education is centered around project work throughout the program. Students continue building foundation and basics and at the end of the third year, students are ready to launch their own project, which may be integrated with other projects but is the student's own innovation.

4

### Global Opportunities

A range of extracurricular programs and internships provides students with opportunities to test themselves in the larger world through academic mobility, integration with top-level researchers. Graduation launches students into a new world where they can continue to work on projects as academics, product and system developers, international project managers, entrepreneurs, and other successful careers.

## Tuition and Financial Aid

Tuition and Fees (2020 Enrollees)			
Program	Admission Fee	Annual Tuition Fee	
Dual /Joint Degrees			
College of Global Liberal Arts <b>Dual degree program with The Australian National University</b>	<b>200,000 JPY</b> (Approx. 1,818 USD)	<b>2,300,000 JPY</b> (Approx. 20,909 USD)	
College of International Relations <b>American University-Ritsumeikan University Joint Degree Program</b>		Study at RU	Study at AU
		<b>1,263,800 JPY</b> (Approx. 11,489 USD)	<b>47,640 USD</b> (12-17.5 Credit hours) <b>50,814 USD</b> (18 Credit hours)
Single Degrees			
College of International Relations <b>Global Studies Major</b>	<b>200,000 JPY</b> (Approx. 1,818 USD)	<b>1,263,800 JPY</b> (Approx. 11,489 USD)	
College of Policy Science <b>Community and Regional Policy Studies Major</b>		<b>1,165,800 JPY</b> (Approx. 10,598 USD)	
College of Information Science and Engineering <b>Information Systems Science and Engineering Course</b>		<b>1,566,200 JPY</b> (Approx. 14,238 USD)	

\*Amounts in USD are for reference only.  
\*(1 USD = 110 JPY, as of Jan. 2020)

## Scholarships and Stipends

### Tuition Reduction Scheme

International Students (who hold the visa status of residence of [Student] while studying at RU) are guaranteed at least a 20% reduction, with 50% and 100% reduction offered to the most outstanding applicants.

- No separate application is required for the scholarship and the amount of reduction will be notified with admission results.
- The RU Tuition Reduction Scheme is offered initially for one year, based on the students' admission evaluation. For 2nd and subsequent years, the tuition reduction will be awarded based on students' grades during the previous year of study.

### Post-Admissions scholarships available to International Students:

There are a variety of scholarships that students can apply for, after the admissions process. Students are encouraged to research other scholarships and their details. Examples of scholarships available as of 2019.

- JASSO Scholarship: 48,000 JPY (436 USD) per month
- International Students Assistance Scholarship by RU Faculty/staff: 250,000 JPY (2,272 USD) per year.
- And many more throughout your study, please consult our Scholarships' page. <http://en.ritsumei.ac.jp/current-students/financial-aid/>

## Program specific scholarships and stipends for dual / joint degree programs

### For GLA Students

- RU Study Abroad Challenge Scholarship\*
  - 300,000 JPY for the 1 year period at ANU

- College of Global Liberal Arts Scholarship for Study Abroad\*
  - 700,000 JPY for the 1 year period at ANU

\*Although students can receive both 1 and 2, students may not combine these with other scholarships specified in university policies.

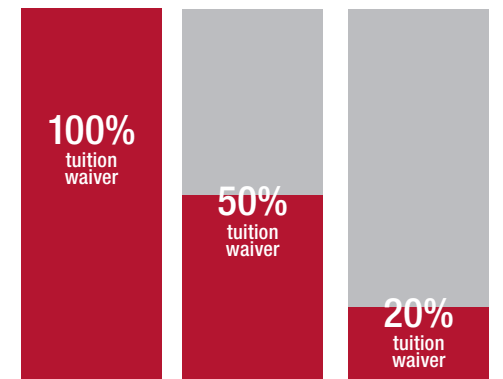
### For JDP Students

- Ritsumeikan Sakura Honors Tuition Stipend
  - 1,500,000 JPY per year for the 2 year period at AU
  - Awarded up to 3 selected students\*
- RU Study Abroad Challenge Scholarship
  - 1,000,000 JPY per year for the 2 year period at AU
  - Awarded to students who meets the requirement

\*3 and 4 cannot be provided in combination

The above information is subject to change. Visit [http://en.ritsumei.ac.jp/e-ug/financial\\_info/scholarships.html/](http://en.ritsumei.ac.jp/e-ug/financial_info/scholarships.html/) for details and the latest information.

\*Amounts in USD are for reference only.  
(1 USD = 110 JPY, as of Jan. 2020)



[en.ritsumei.ac.jp/e-ug/financial\\_info/scholarships.html/](http://en.ritsumei.ac.jp/e-ug/financial_info/scholarships.html/)

## Monthly Living Costs in Japan

Accommodation by University	39,000-60,000 JPY (354-545 USD)
Utilities	8,000 JPY (72 USD)
Food	24,770 JPY (225 USD)
Telecommunication	3,510 JPY (32 USD)
Transportations	3,280 JPY (30 USD)
Books & Supplies	2,950 JPY (27 USD)
Entertainment	8,800 JPY (80 USD)
Miscellaneous Expenses	13,270 JPY (121 USD)
<b>SUBTOTAL</b>	<b>103,580-124,580 JPY (941-1,132 USD)</b>

\*Data from University Students' Life Survey, conducted in 2017 by National Federation of University Co-operative Association.  
\*Living costs vary depending on student lifestyle.